



Summary

Available SF: 3,800 SF
 Lease Rate: Contact Broker

Property Highlights

- Easy access to I-395, I-95 and I-495 and Fairfax County Pkwy
- 3,800 SF end cap in the heart of Springfield
- Great opportunity to brand a business
- Currently built out as a dry cleaner

Demographics

2 Mile

5 Mile

10 Mile

Total Households: 16,165 120,462 466,076

Total Population: 48,498 335,225 1,202,394

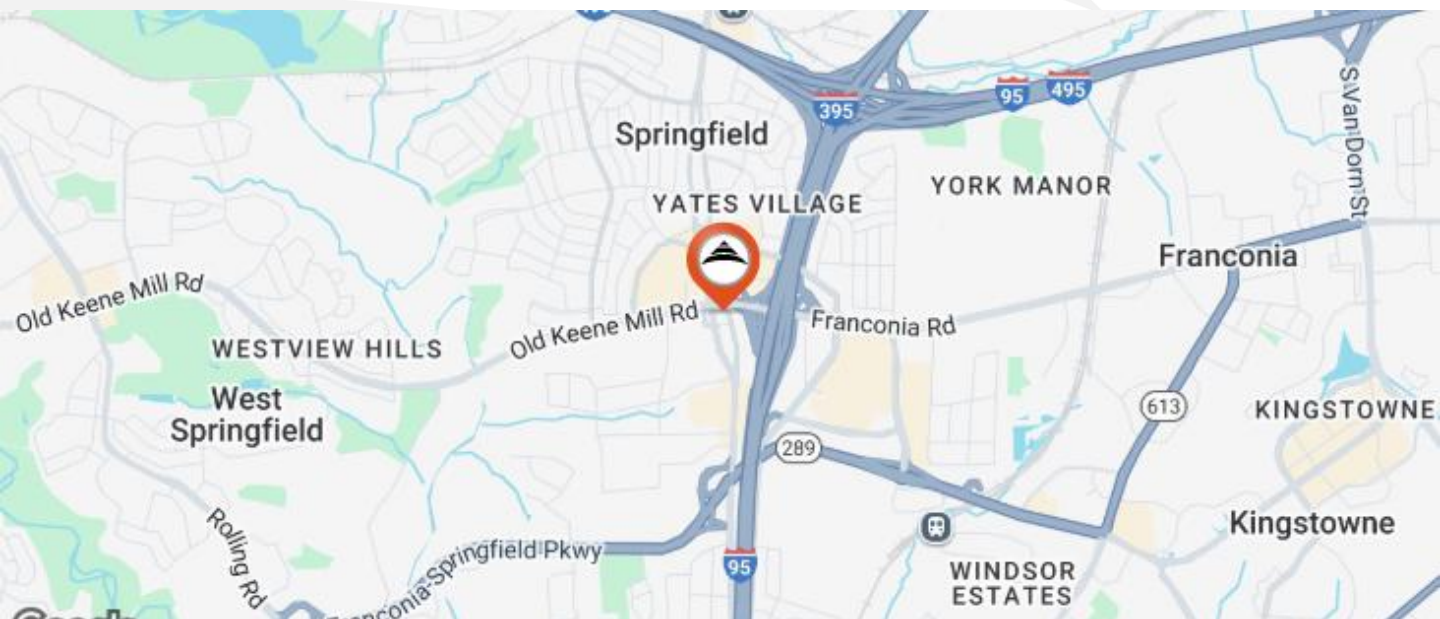
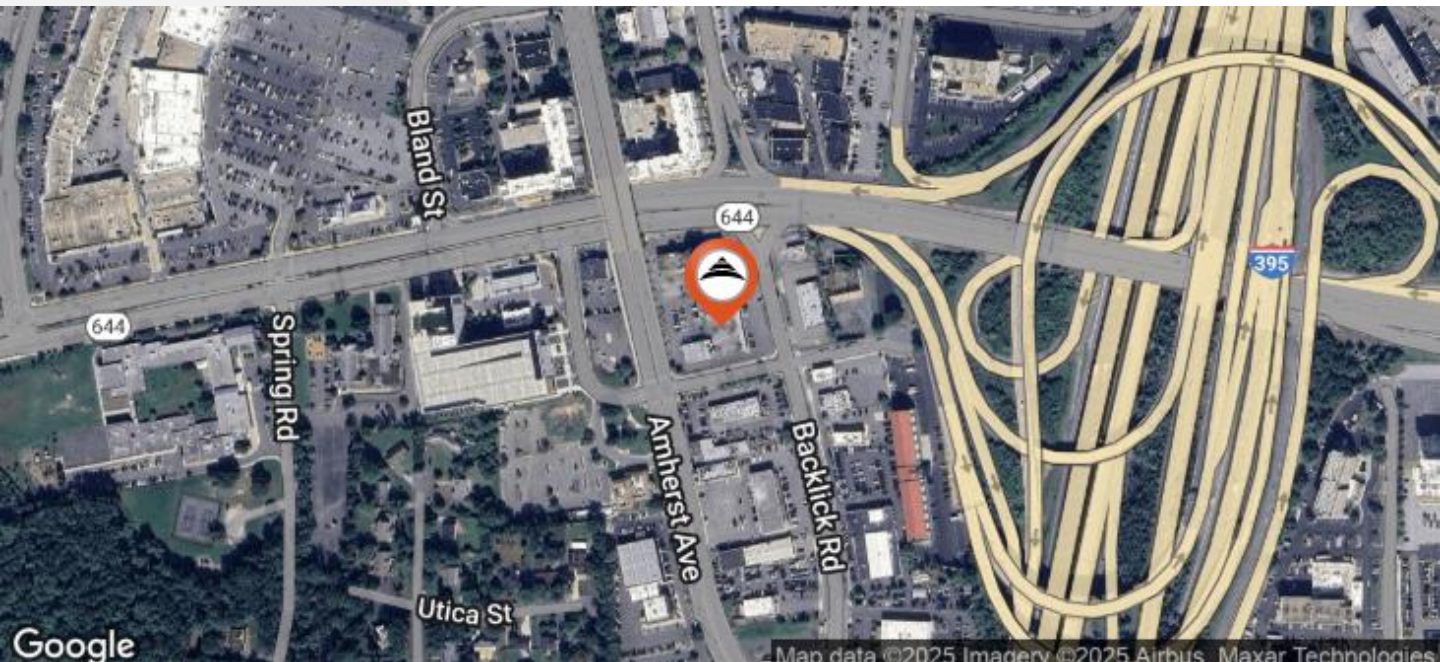
Average HH Income \$144,071 \$145,026 \$151,450

The information above was furnished to us by sources we believe to be reliable but no warranty or representation is made to its accuracy. It is your responsibility to independently confirm its accuracy and completeness. This offering is subject to correction or errors and omissions, change of pricing, prior to sale/lease or withdrawal from the market, without notice.

Oyku Hanna

703-435.4007 x 109

ohanna@veritycommercial.com



The information above was furnished to us by sources we believe to be reliable but no warranty or representation is made to its accuracy. It is your responsibility to independently confirm its accuracy and completeness. This offering is subject to correction or errors and omissions, change of pricing, prior to sale/lease or withdrawal from the market, without notice.

Oyku Hanna
 703-435.4007 x 109
 ohanna@veritycommercial.com