

FOR LEASE

INDUSTRIAL

CLASS B



6785 PROSPER CIRCLE

Edmond, Oklahoma 73034

\$10.00/SF NNN | TRIPLE NET LEASE

7,000 SF
AVAILABLE SF

0.58 AC
LAND AREA

1,000 SF
OFFICE SF

16 FT
CLEAR HEIGHT

2 OH 14x12
GRADE LEVEL DOORS

2022
YEAR BUILT

PROPERTY HIGHLIGHTS

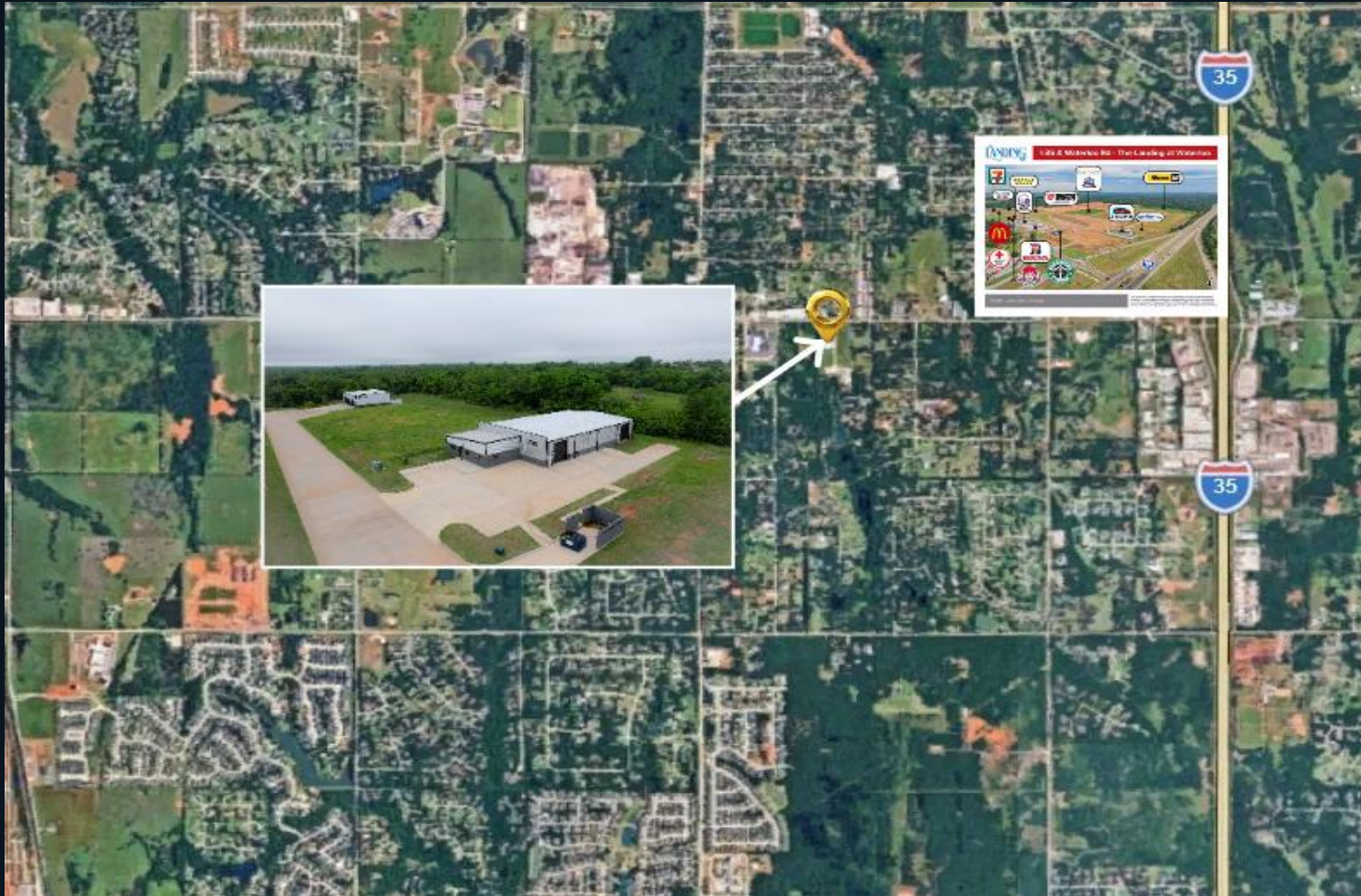
New flex industrial park in NE Edmond · Off Waterloo between I-35 & Oak Tree · SW of the The Landing — Edmond's newest retail corridor · Easy I-35 access



CONTACT

Tom H. Vaught, SIOR

tom@victorycre.com · C: 405.850.6556



ABOUT THE PROPERTY

Prosper Park is a new flex industrial park in Northeast Edmond, conveniently located off Waterloo Road between I-35 and the prestigious Oak Tree Neighborhood.

KEY LOCATION ADVANTAGES

Easy I-35 Access

Direct connectivity to Oklahoma's major north-south corridor

Off Waterloo Road

Centrally located in high-growth Northeast Edmond

SW of the The Landing

Edmond's newest premier retail & dining destination

Near Oak Tree Neighborhood

Prestigious area — ideal for professional image

CONTACT

Tom H. Vaught, SIOR

tom@victorycre.com · C: 405.850.6556