

WAREHOUSE DISTRICT

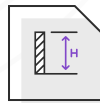
CLEVELAND

PREMIER OFFICE SPACE FOR LEASE

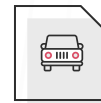
425 W LAKESIDE
**STONE
BLOCK**



One suite remains
Suite 200 - 6,849 RSF



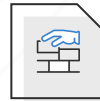
High
ceilings



Convenient
Access



Modern
finishes



Exposed brick
interiors

CONTACTS

CBRE

SIXTY NORTH

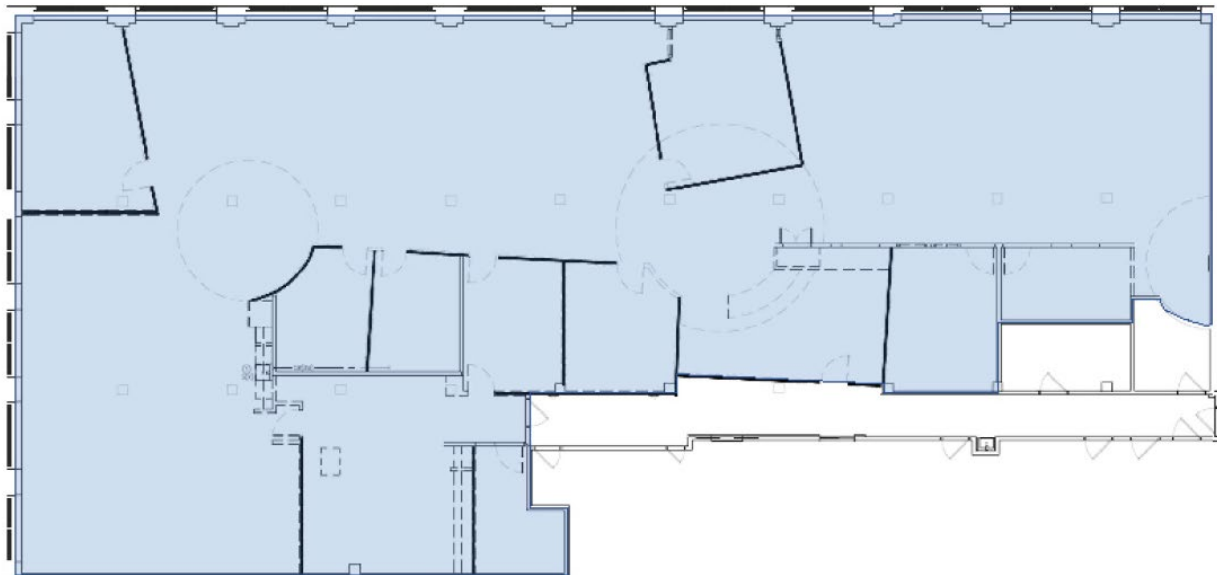
**WARREN
BLAZY III**

+1 330 606 5917
warren.blazy@cbre.com

**ERIC
SMITH**

+1 330 714 6558
eric.smith3@cbre.com

SUITE SUITE 200 - 6,849 RSF



CONTACTS



**WARREN
BLAZY III**

+1 330 606 5917
warren.blazy@cbre.com

**ERIC
SMITH**

+1 330 714 6558
eric.smith3@cbre.com

© 2024 CBRE, Inc. All rights reserved. This information has been obtained from sources believed reliable but has not been verified for accuracy or completeness. CBRE, Inc. makes no guarantee, representation or warranty and accepts no responsibility or liability as to the accuracy, completeness, or reliability of the information contained herein. You should conduct a careful, independent investigation of the property and verify all information. Any reliance on this information is solely at your own risk. CBRE and the CBRE logo are service marks of CBRE, Inc. All other marks displayed on this document are the property of their respective owners, and the use of such marks does not imply any affiliation with or endorsement of CBRE. Photos herein are the property of their respective owners. Use of these images without the express written consent of the owner is prohibited. PMStudio_January2024