



**For Lease**  
Office Building

FOR LEASE

# Office Space

2033 E Edgewood Dr | Lakeland, FL 33803

# Property Summary



## PROPERTY DESCRIPTION

Suite 1 has a large reception area (18' x 16') that could also be used for open plan cubicles; a 14' x 14' with custom shelving which could be a conference room or private office; a 12' x 14' private office; a 10' x 16' private office; a 10' x 12' private office; nice breakroom; a large storage closet and an IT/phone room and 2 rest rooms.

The site offers plenty of parking and is very convenient to downtown Lakeland and Bartow.

## LEASE INFORMATION

Lease Rate:	\$15.00 SF/yr (Gross)
Available SF:	1,500 SF
Lot Size:	0.22 Acres
Building Size:	8,400 SF

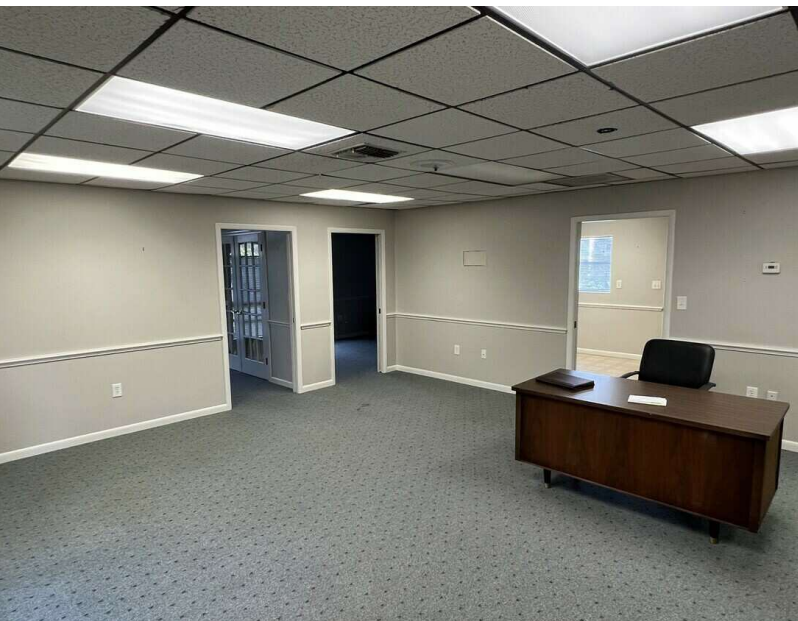
**Phillip Mays**

863.409.2277

phil@ulyssesrealtygroup.com

**ULYSSES**  
REALTY GROUP

# Additional Photos



**Phillip Mays**  
863.409.2277  
phil@ulyssesrealtygroup.com

**ULYSSES**  
REALTY GROUP

# Property Description



## Site Description

Suite 1 has a large reception area (18' x 16') that could also be used for open plan cubicles; a 14' x 14' with custom shelving which could be a conference room or private office; a 12' x 14' private office; a 10' x 16' private office; a 10' x 12' private office; nice breakroom; a large storage closet and an IT/phone room and 2 rest rooms.

The site offers plenty of parking and is very convenient to downtown Lakeland and Bartow.

**Phillip Mays**

863.409.2277

[phil@ulyssesrealtygroup.com](mailto:phil@ulyssesrealtygroup.com)

  
**ULYSSES**  
REALTY GROUP

# Property Details & Highlights

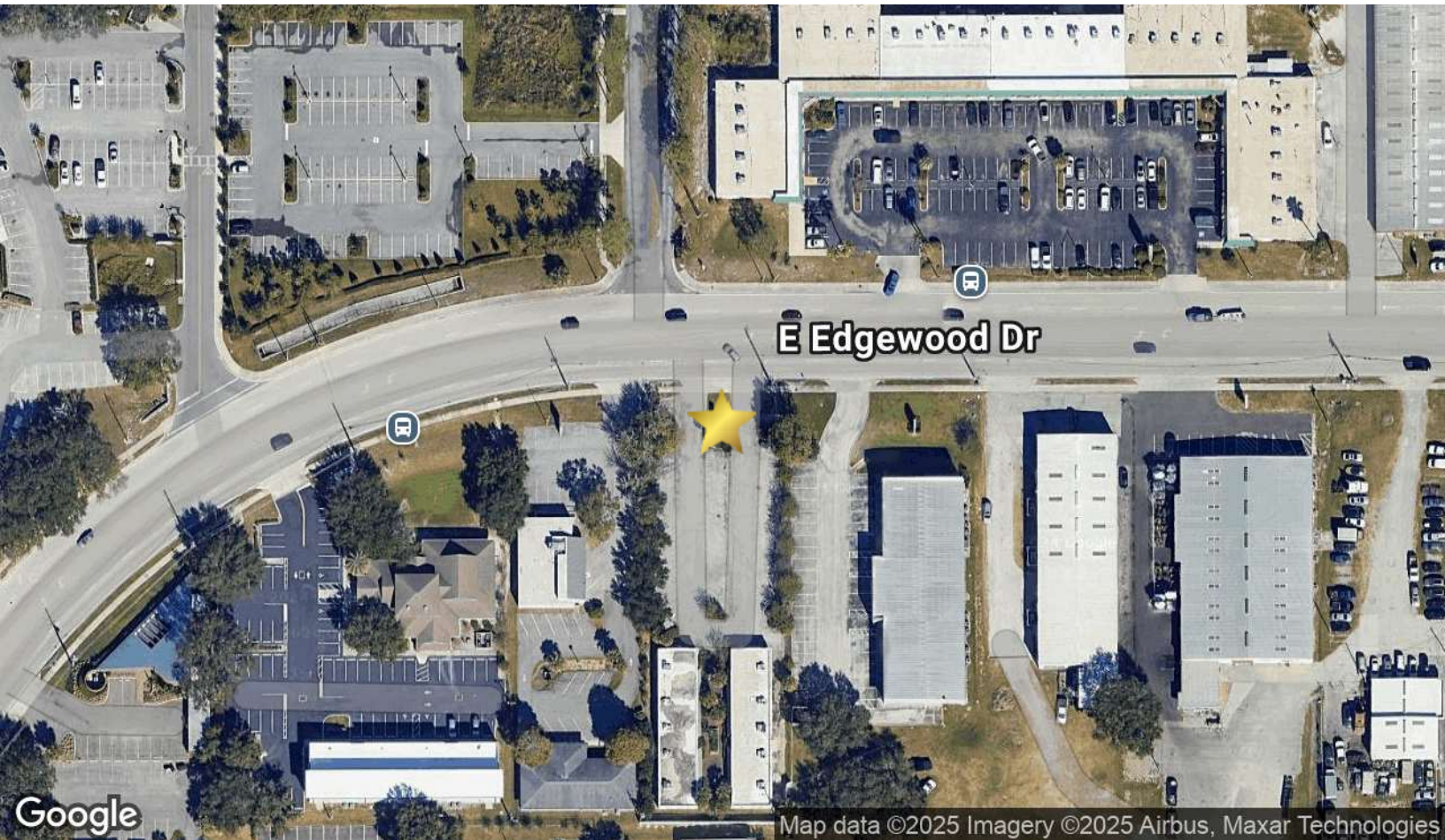
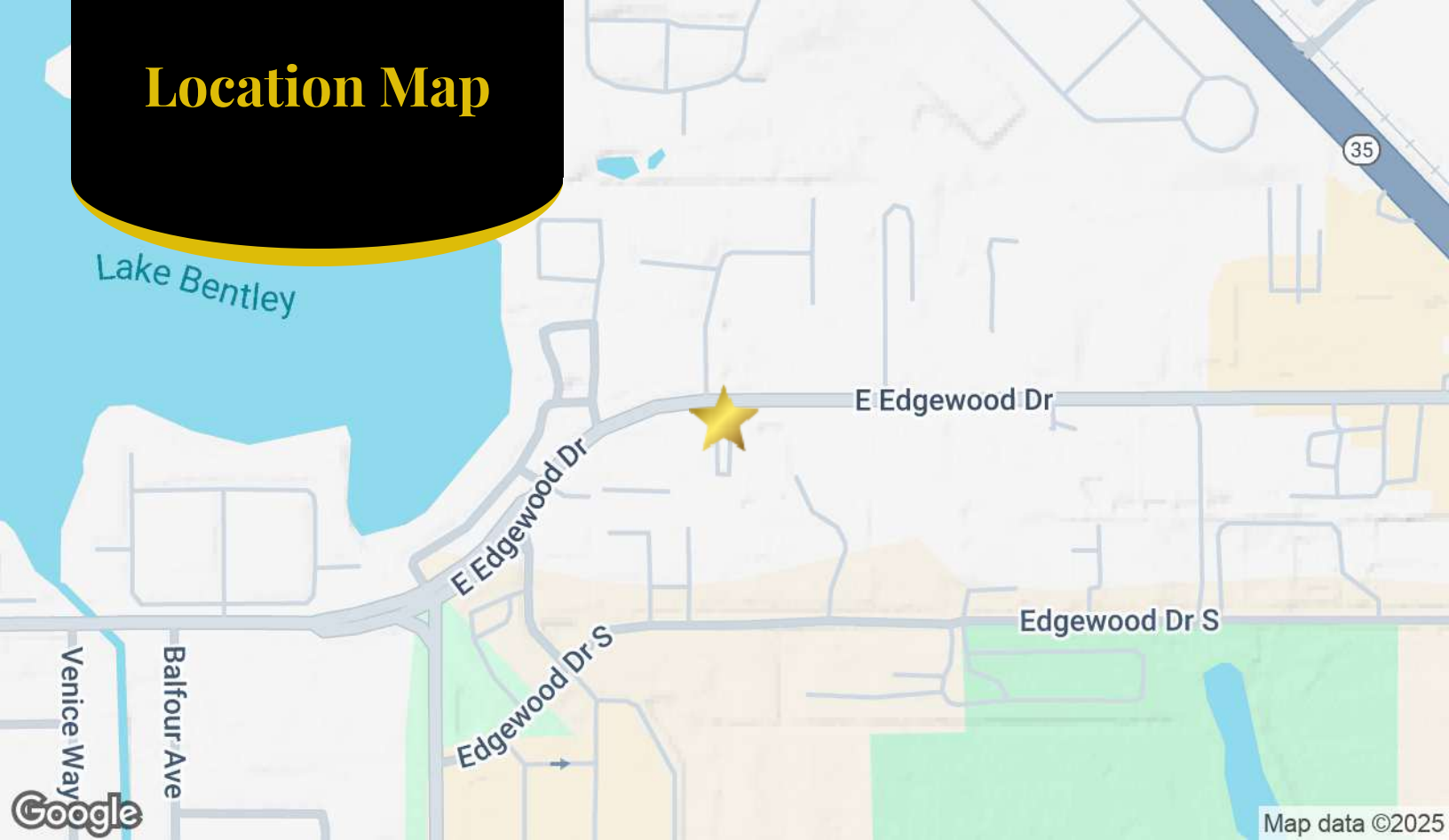
Building Name	2033 E Edgewood Dr
Property Type	Office
Property Subtype	Office Building
APN	24-28-28-244000-005804
Building Size	8,400 SF
Lot Size	0.22 Acres
Building Class	C
Year Built	1978
Number of Floors	1
Average Floor Size	8,400 SF
Parking Spaces	50

Suite 1 has a large reception area (18' x 16') that could also be used for open plan cubicles; a 14' x 14' with custom shelving which could be a conference room or private office; a 12' x 14' private office; a 10' x 16' private office; a 10' x 12' private office; nice breakroom; a large storage closet and an IT/phone room and 2 rest rooms.

The site offers plenty of parking and is very convenient to downtown Lakeland and Bartow.



# Location Map



**Phillip Mays**  
863.409.2277  
phil@ulyssesrealtygroup.com



# Retailer Map

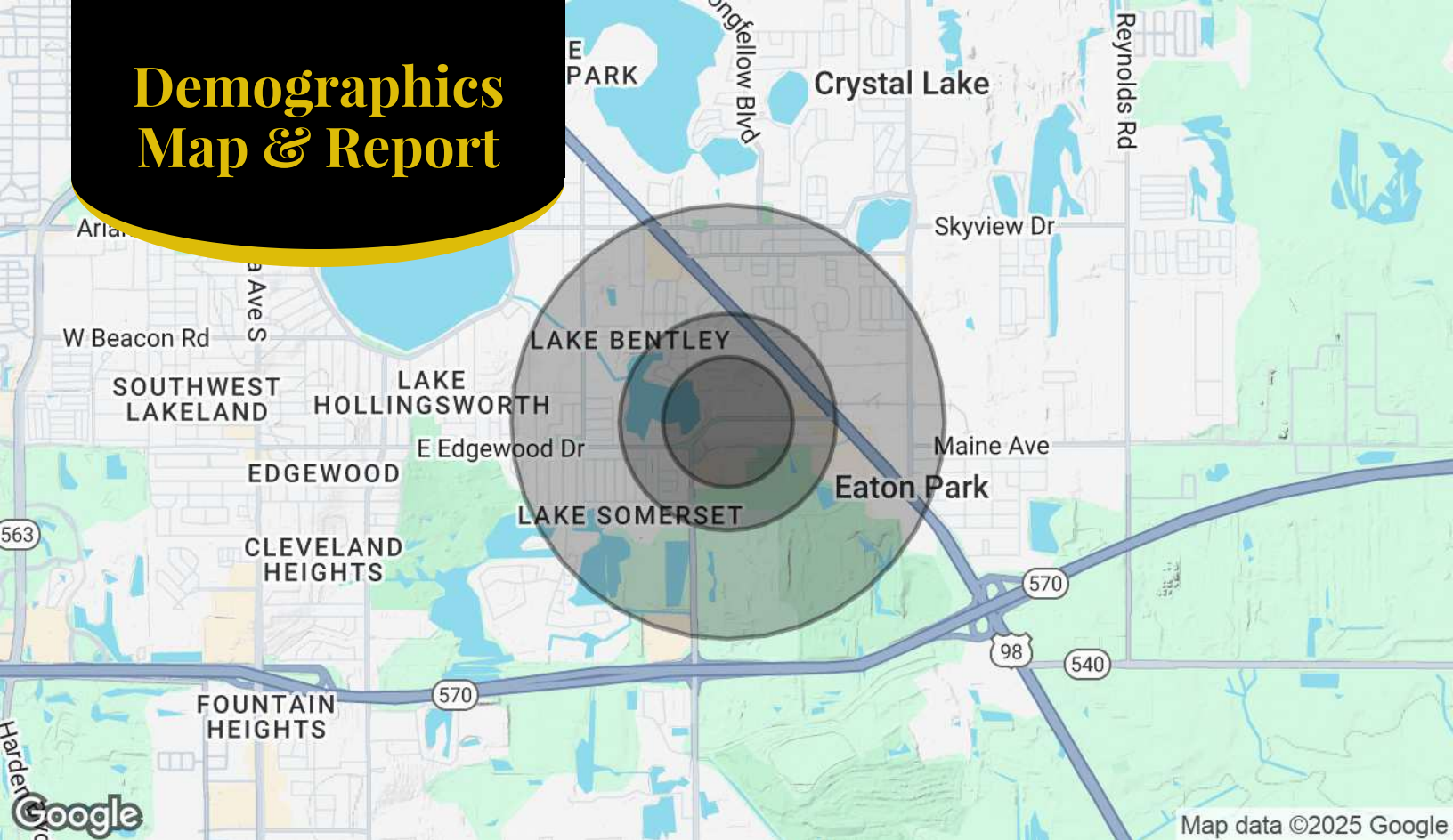


Map data ©2025

**Phillip Mays**  
863.409.2277  
phil@ulyssesrealtygroup.com



# Demographics Map & Report



<b>Population</b>	<b>0.3 Miles</b>	<b>0.5 Miles</b>	<b>1 Mile</b>
Total Population	353	2,053	8,118
Average Age	43	42	40
Average Age (Male)	41	40	38
Average Age (Female)	45	44	41
<b>Households &amp; Income</b>	<b>0.3 Miles</b>	<b>0.5 Miles</b>	<b>1 Mile</b>
Total Households	173	924	3,296
# of Persons per HH	2	2.2	2.5
Average HH Income	\$67,973	\$74,281	\$79,634
Average House Value	\$305,588	\$297,197	\$284,742

Demographics data derived from AlphaMap

**Phillip Mays**

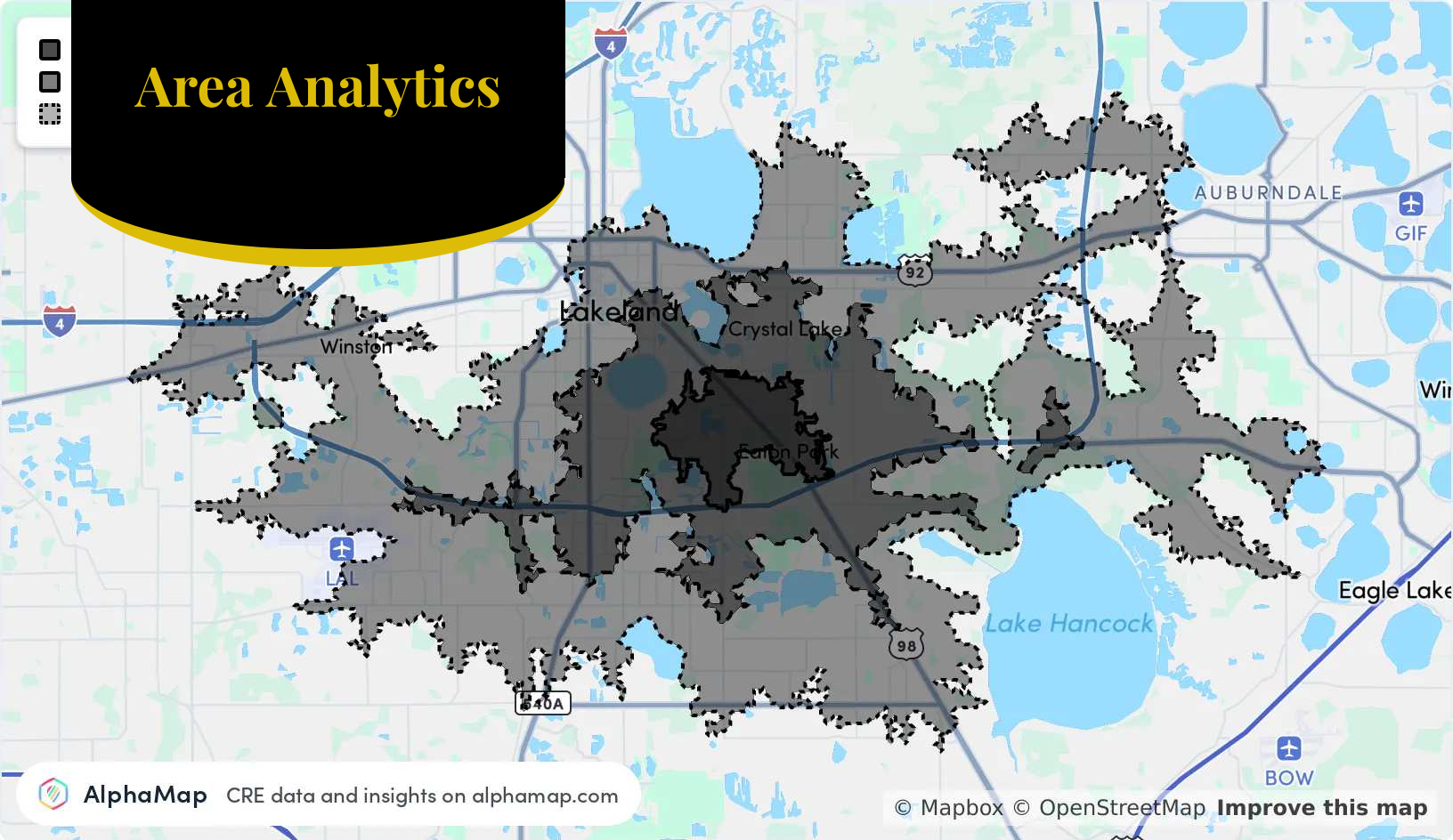
863.409.2277

phil@ulyssesrealtygroup.com





# Area Analytics



## Population

### 5 Minutes

### 10 Minutes

### 15 Minutes

Total Population	9,074	48,543	132,340
Average Age	39	39	41
Average Age (Male)	38	38	40
Average Age (Female)	41	40	42

## Household & Income

### 5 Minutes

### 10 Minutes

### 15 Minutes

Total Households	3,596	17,940	50,961
Persons per HH	2.5	2.7	2.6
Average HH Income	\$81,235	\$83,927	\$86,710
Average House Value	\$281,499	\$275,641	\$277,192
Per Capita Income	\$32,494	\$31,084	\$33,350

Map and demographics data derived from AlphaMap

**Phillip Mays**

863.409.2277

phil@ulyssesrealtygroup.com

**ULYSSES**
  
 REALTY GROUP