

WEST WINDMILL LANE

For Lease

Collaboration Center at Las Vegas Ranch

8390 West Windmill Lane, Las Vegas, NV 89113

HILLARY STEINBERG

o: 702 780 6761 c: 702 460 3542
hillary.steinberg@avisonyoung.com
NV Lic. #S.0174223

CORINA TOWLE

o: 702 637 7711 c: 702 321 9734
corina.towle@avisonyoung.com
NV Lic. #S.0187978



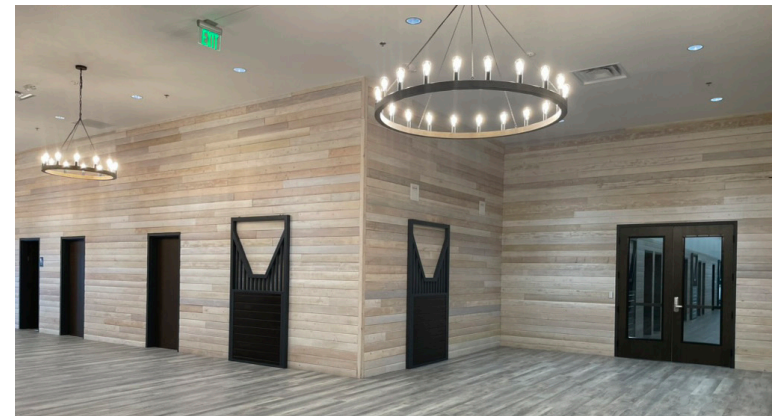
Property Highlights

8390 West Windmill Lane, Las Vegas, NV 89113

Collaboration Center Foundation was created to work with other disability related community non-profit organizations, providers, government agencies and education systems to form a strong, inclusive and diverse community supporting the many needs families with DD have over the entire lifespan. Collaboration Center is in the process of building out a 5-acre campus to be the largest disability resource network and destination that will support social inclusion, treatment, therapy, education, recreation, health and wellness, case management, care coordination, support groups and more for families touched by all Intellectual, Developmental, Physical and Learning Disabilities of all ages.

Join the Collaboration Center and contribute to removing barriers and helping these individuals and families reach their full potential and live their dreams in Nevada!

- Office / Medical Suite available for Lease
- Suite 111/112/113: 1,371 Rentable SF / 711 Usable SF
- Co-tenants include a part-time Medicare office, Boys Town Nevada, Foster Kinship and more.
- The Collaboration Center provides treatment and therapy services, support services, recreation and community inclusion programs, health and wellness programs, vocational training, life skills and educational training and workshops.
- Tenants receive 8 hours per month of free multi-purpose room.
- One of a kind campus focused on social inclusion, family and peer engagement, recreation, therapy and education.
- Asking Rate: \$2.50 psf FSG



**For more
information**

HILLARY STEINBERG

o: 702 780 6761 c: 702 460 3542
hillary.steinberg@avisonyoung.com
NV Lic. #S.0174223

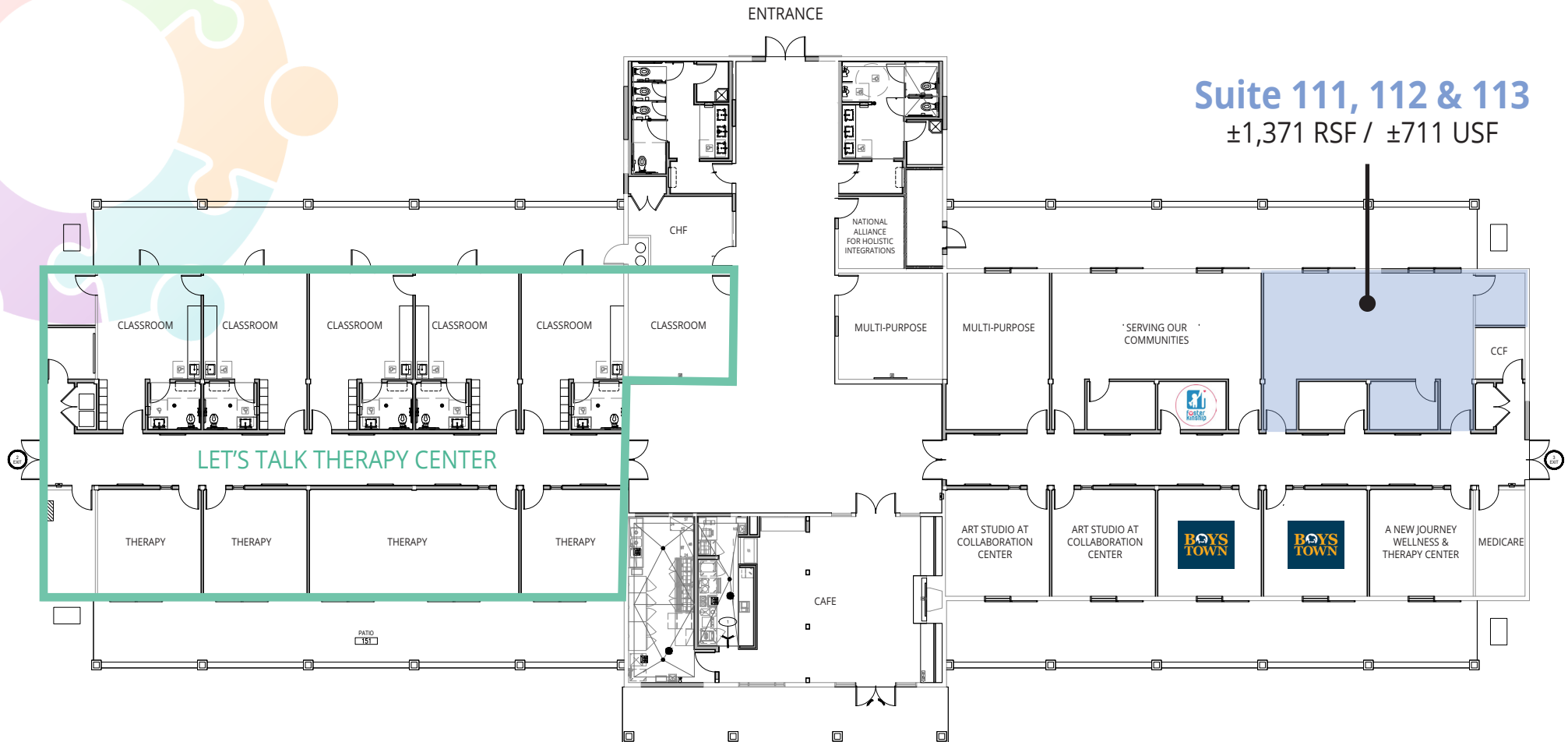
CORINA TOWLE

o: 702 637 7711 c: 702 321 9734
corina.towle@avisonyoung.com
NV Lic. #S.0187978



Site Plan

8390 West Windmill Lane, Las Vegas, NV 89113



For more
information

HILLARY STEINBERG

o: 702 780 6761 c: 702 460 3542
hillary.steinberg@avisonyoung.com
NV Lic. #S.0174223

CORINA TOWLE

o: 702 637 7711 c: 702 321 9734
corina.towle@avisonyoung.com
NV Lic. #S.0187978



**For more
information**

HILLARY STEINBERG

o: 702 780 6761 c: 702 460 3542
 hillary.steinberg@avisonyoung.com
 NV Lic. #S.0174223

CORINA TOWLE

o: 702 637 7711 c: 702 321 9734
 corina.towle@avisonyoung.com
 NV Lic. #S.0187978