

**Commercial  
Real Estate  
In The  
Baltimore  
Metropolitan  
Area**

**For  
Lease**



**GOLD AND  
COMPANY, LLC**



**+/- 30,000 SF Drive-In Building W/ +/- 10 Acres  
Storage Yard Available For Lease**

**1001 68th St. Rosedale MD 21237**

**Gold And  
Company, LLC**

**5601 Newbury St.  
Baltimore, MD 21209**

**Mitch Gold /  
Jim Chivers  
Office: 410.578.1300  
Fax: 410.578.0200  
www.goldcommercial.net**

- +/- 30,000 SF Building w/ +/- 10 Acres Storage Yard For Lease
- +/- 3,000 SF Office
- 12 Total Drive - In Doors - Oversized Bays
- Baltimore County—MH Zoning
- Fenced Lot
- Ideal For Maintenance Facility and Contractors Storage Yard
- Available For Lease
- Just Off of Pulaski Hwy - Close Access to 95
- Available in +/- 60 Days
- Call For More Information

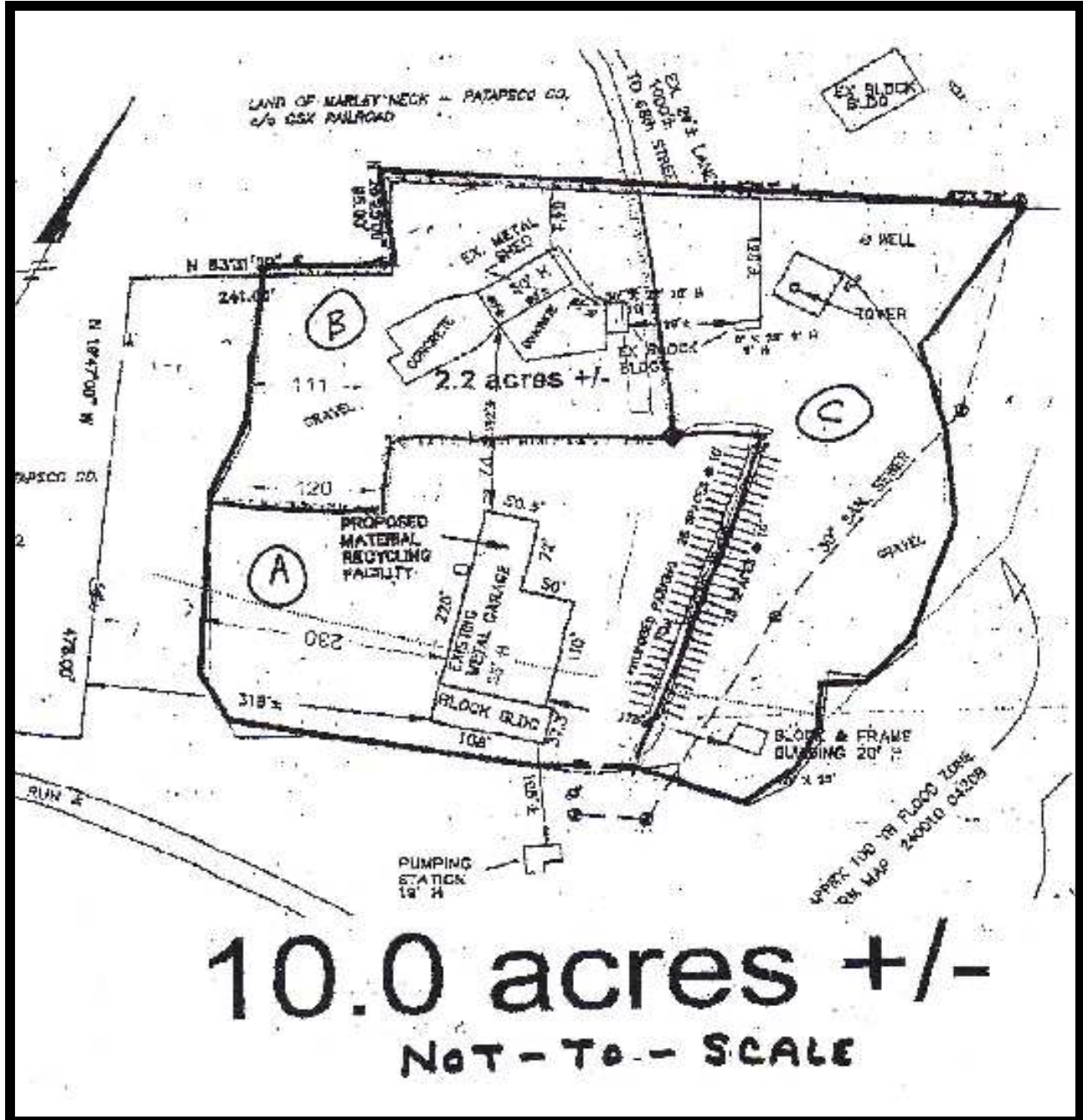
All Information contained herein is from sources deemed reliable, however no warranty is made to its accuracy



# Gold And Company

Commercial Real Estate in the Baltimore Metropolitan Area

1001 68th St., Rosedale, MD



10.0 acres +/-

NOT - TO - SCALE

Mitch Gold / Jim Chivers  
Gold And Company, LLC  
5601 Newbury St.  
Baltimore, MD 21209

410.578.1300 (Office)  
410.578.0200 (Fax)  
[www.goldcommercial.net](http://www.goldcommercial.net)

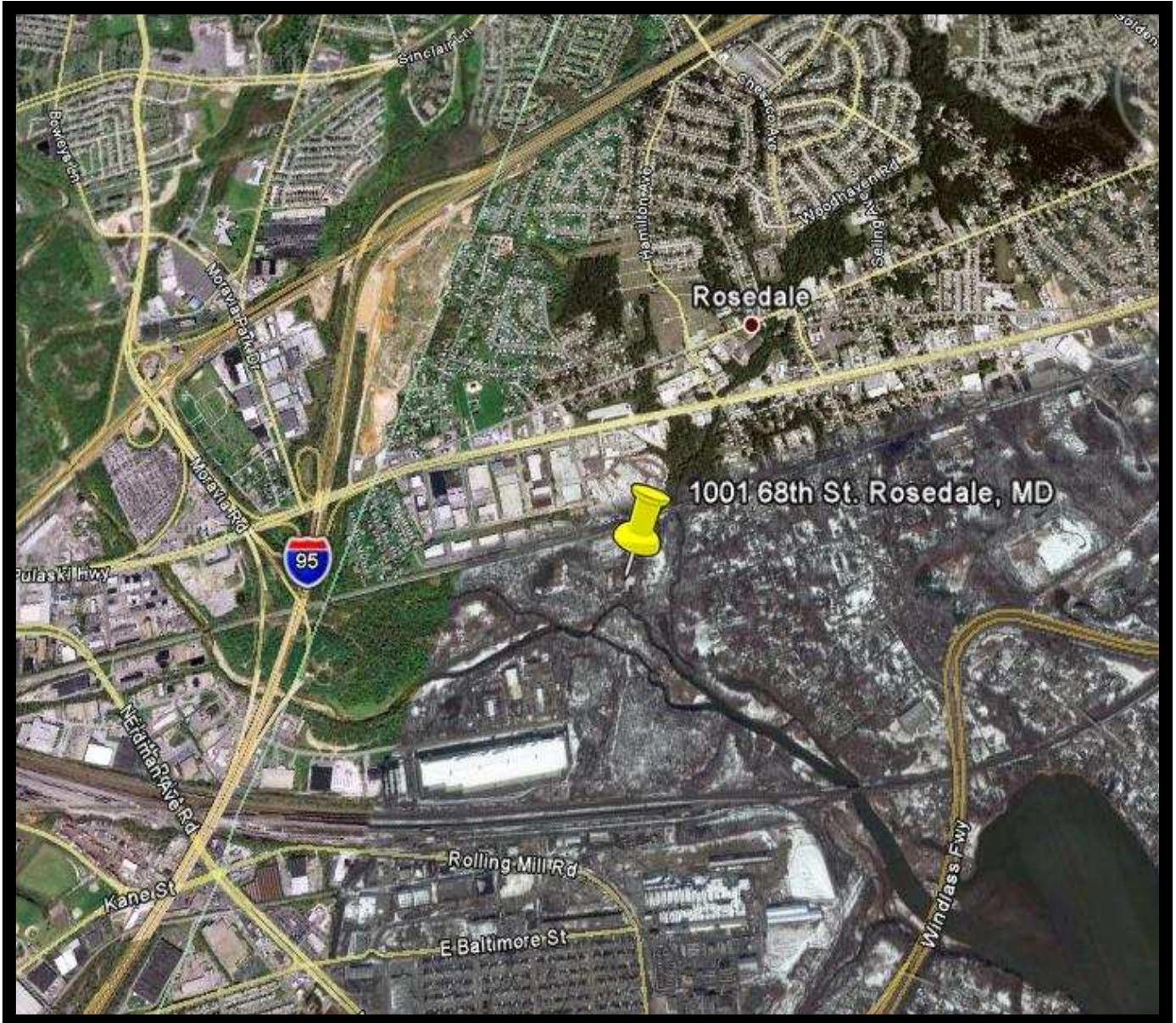




# Gold And Company

*Commercial Real Estate in the Baltimore Metropolitan Area*

**1001 68th St. Rosedale, MD 21237**



**Call For More Information**

**Mitch Gold / Jim Chivers  
Gold And Company, LLC  
5601 Newbury St.  
Baltimore, MD 21209**

**410.578.1300 (Office)  
410.578.0200 (Fax)  
[www.goldcommercial.net](http://www.goldcommercial.net)**