

- SINCE 1987

SINCE 1987

Any information given herewith is obtained from sources considered reliable. However, we are not responsible for misstatement of facts, errors, or omissions. Owner may withdraw from market, prior to sale or change price without notice.

SMALL BAY INDUSTRIAL SPACE FOR LEASE

1233 OLD DIXIE HIGHWAY, LAKE PARK, FL 33403

REICHEL

SINCE 1987

PROPERTY INFORMATION SUMMARY

Property:	30,750± SF, 3-building, small bay industrial complex for lease. The west building fronts Old Dixie Highway and those units have storefront entrances. The middle and east buildings are primarily rented to car and storage tenants, hobbyists, and a variety of small businesses. All units have at least one (1) 10' x 10' overhead door and share common area bathrooms. The clear height in the warehouse is 12'.
Electric:	Each building has one house electrical meter. Electric is included in rent.
Location:	Just off Interstate 95 at the Northlake Boulevard exit. Old Dixie Highway is a signalized intersection east of Interstate 95. This intersection is just west of the Florida East Coast Railway railroad tracks.
Zoning:	(C-4) Business District, Lake Park. Allows office/warehouse or storage type uses.
Available Space and Lease Rate:	<p>Building 1 (West Building): Units 4 & 29 and 5 & 28: 1,200 SF (50% office and 2 overhead doors). \$2,500.00 per month plus Sales Tax (currently 0%).</p> <p>Units 9 & 24: 760 SF (Approximately 50% office with 1 overhead door). \$1,583.33 per month plus Sales Tax (currently 0%).</p> <p>Building 2 (Middle Building): Units 34 & 35: 600 SF (100% warehouse with 2 overhead doors). \$1,250.00 per month plus sales tax (currently 0%).</p> <p>Building 3 (East Building): Unit 80: 300 SF. \$625.00 per month plus Sales Tax (currently 0%).</p>

REICHEL

SINCE 1987

Reichel Realty & Investments, Inc.
8845 N. Military Trail
Suite 100
Palm Beach Gardens, FL 33410
(561) 478-4440 main
www.reichelrealty.com

For more information, please contact:



Kerry Jackson, SIOR
Vice President
(561) 478-4440 phone
(561) 512-7512 cell
kjackson@reichelrealty.com

SMALL BAY INDUSTRIAL SPACE FOR LEASE

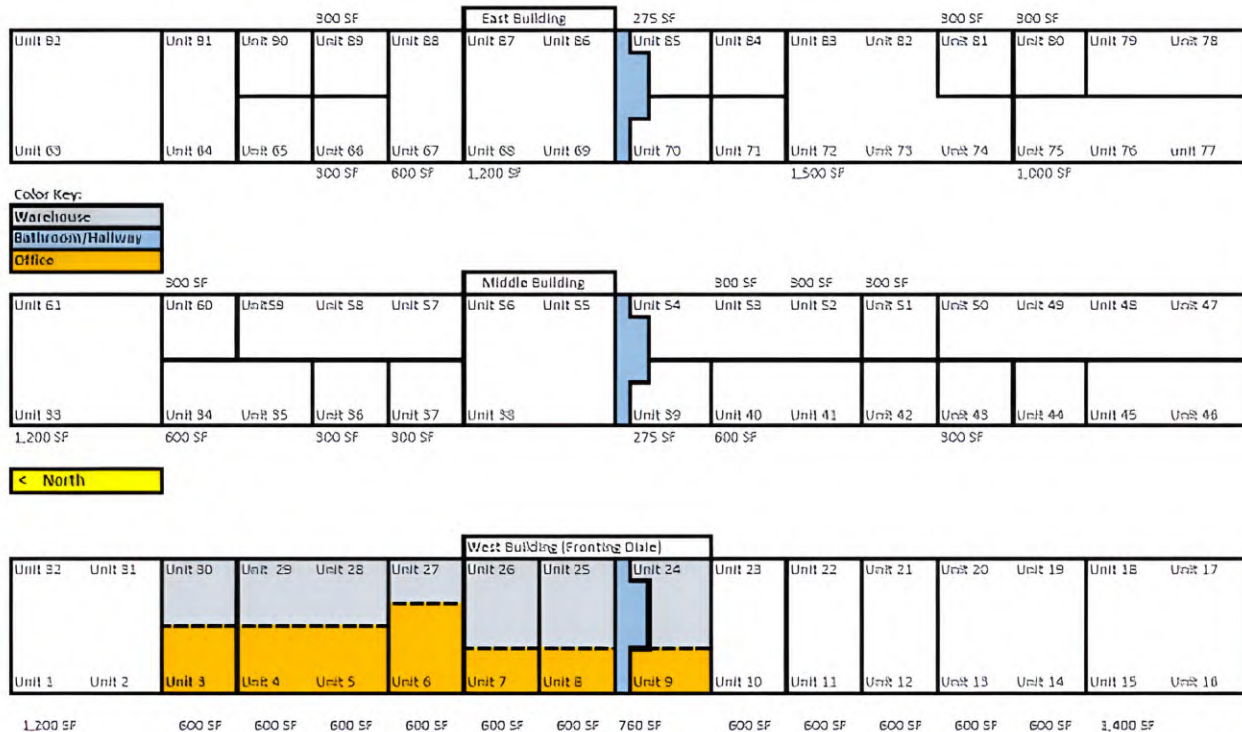
1233 OLD DIXIE HIGHWAY, LAKE PARK, FL 33403

REICHEL

SINCE 1987

FLOOR PLAN

Floor Plan Plan for 1233 Old Dixie Highway



REICHEL

SINCE 1987

Reichel Realty & Investments, Inc.
8845 N. Military Trail
Suite 100
Palm Beach Gardens, FL 33410
(561) 478-4440 main
www.reichelrealty.com

For more information, please contact:



Kerry Jackson, SIOR
Vice President
(561) 478-4440 phone
(561) 512-7512 cell
kjackson@reichelrealty.com

SMALL BAY INDUSTRIAL SPACE FOR LEASE

1233 OLD DIXIE HIGHWAY, LAKE PARK, FL 33403

REICHEL

SINCE 1987

PHOTOS

WEST BUILDING



MIDDLE BUILDING



REICHEL

SINCE 1987

Reichel Realty & Investments, Inc.
8845 N. Military Trail
Suite 100
Palm Beach Gardens, FL 33410
(561) 478-4440 main
www.reichelrealty.com

For more information, please contact:



Kerry Jackson, SIOR
Vice President
(561) 478-4440 phone
(561) 512-7512 cell
kjackson@reichelrealty.com

Any information given herewith is obtained from sources considered reliable. However, we are not responsible for misstatement of facts, errors, or omissions. Owner may withdraw from market, prior to sale or change price without notice.

SMALL BAY INDUSTRIAL SPACE FOR LEASE

1233 OLD DIXIE HIGHWAY, LAKE PARK, FL 33403

REICHEL

SINCE 1987

PHOTOS

EAST BUILDING



OVERHEAD VIEW



REICHEL

SINCE 1987

Reichel Realty & Investments, Inc.
8845 N. Military Trail
Suite 100
Palm Beach Gardens, FL 33410
(561) 478-4440 main
www.reichelrealty.com

For more information, please contact:



Kerry Jackson, SIOR
Vice President
(561) 478-4440 phone
(561) 512-7512 cell
kjackson@reichelrealty.com

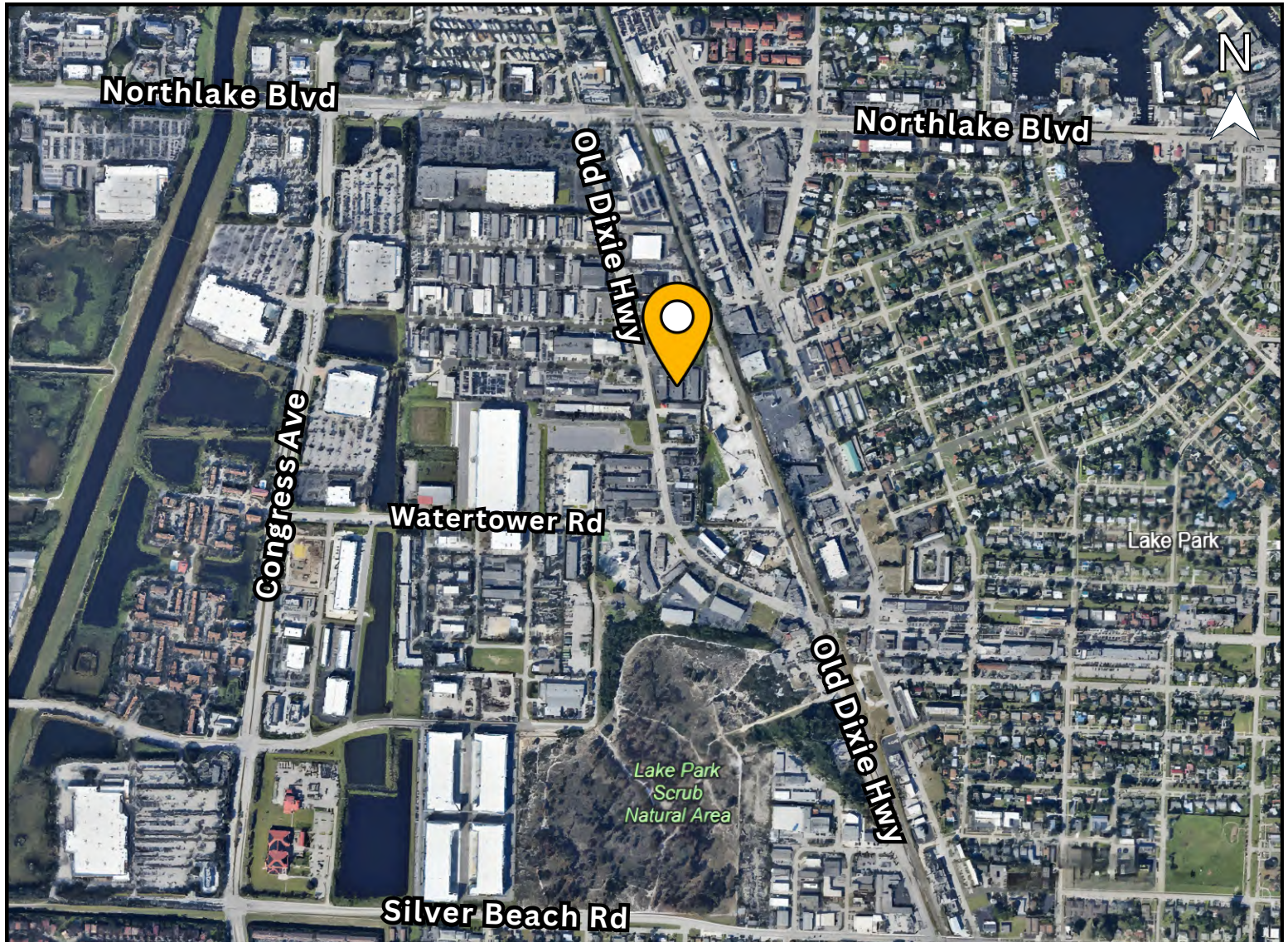
SMALL BAY INDUSTRIAL SPACE FOR LEASE

1233 OLD DIXIE HIGHWAY, LAKE PARK, FL 33403

REICHEL

SINCE 1987

MAP



REICHEL

SINCE 1987

Reichel Realty & Investments, Inc.
8845 N. Military Trail
Suite 100
Palm Beach Gardens, FL 33410
(561) 478-4440 main
www.reichelrealty.com

For more information, please contact:



Kerry Jackson, SIOR

Vice President

(561) 478-4440 phone

(561) 512-7512 cell

kjackson@reichelrealty.com

Experience the Reichel Advantage in Value-Added Services:

- Management
- Commercial Real Estate
- Construction
- Tax Appeal
- Sales & Marketing
- Leasing
- Government Relations
- Work Outs

Any information given herewith is obtained from sources considered reliable. However, we are not responsible for misstatement of facts, errors, or omissions. Owner may withdraw from market, prior to sale or change price without notice.