

PHALEN BLVD

EDGERTON ST

BUSH AVE

BRADLEY ST

LOT 505
0.51 ac

LOT 555
0.40 ac

LAND FOR SALE

505 + 555 BUSH AVE | ST. PAUL

PROPERTY SUMMARY

555 BUSH AVE - FOR SALE

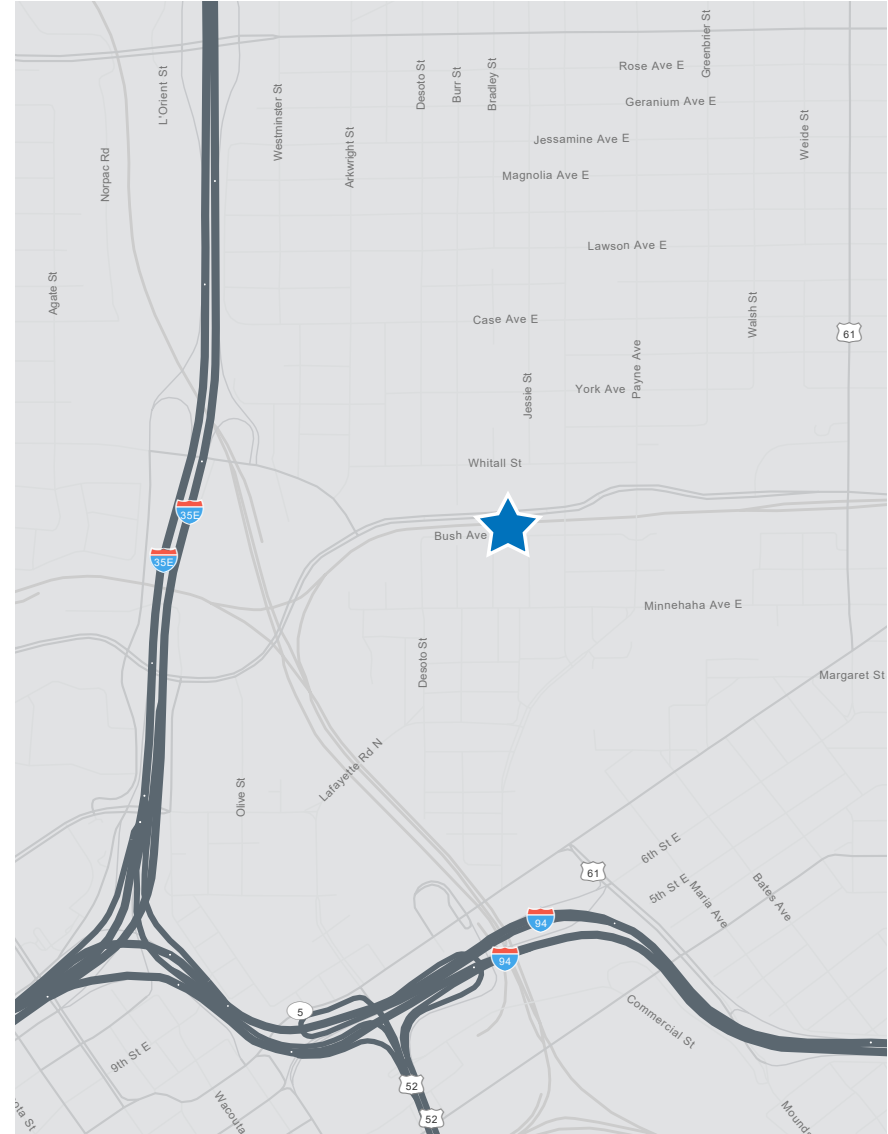
LOCATION: 555 Bush Ave | St. Paul, MN 55130
LAND SIZE: 0.40 acres
PID: 292922340160
ZONING: I-1 (light industrial)
ASKING PRICE: \$199,944 (\$9.00 psf)
TAXES: TBD

505 BUSH AVE - FOR SALE

LOCATION: 505 Bush Ave | St. Paul, MN 55130
LAND SIZE: 0.51 acres
PID: 292922340158
ZONING: I-1 (light industrial)
ASKING PRICE: \$156,816 (\$9.00 psf)
TAXES: TBD

HIGHLIGHTS

- * Both parcels are zoned LI-light industrial, which permits auto body shop, parking facility, vehicle storage, service business, animal boarding, animal daycare, dry cleaning and outdoor storage
- * Power and utilities have been brought to the side of street
- * Environmental reports can be shared upon request
- * Lots are Brownfield sites, remediation and grant money information available upon request

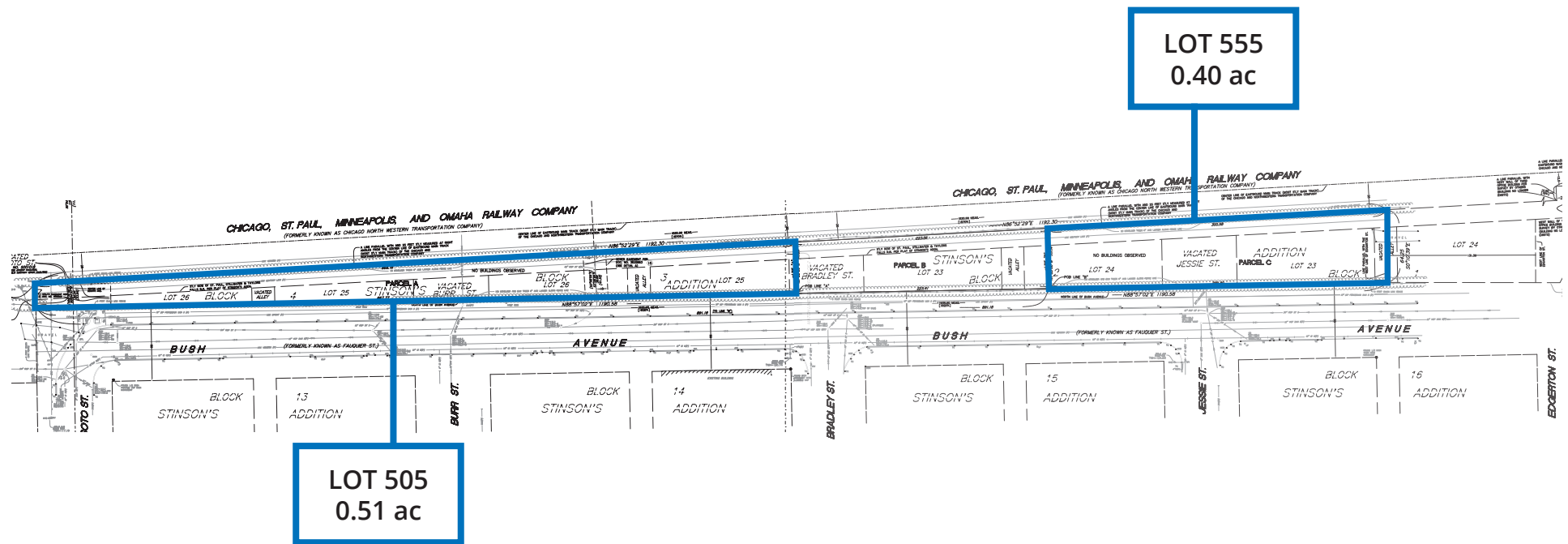


**for information
CONTACT**

Russ Crawford · 612 741 4800 · russ.crawford@transwestern.com
Patrick Crawford · 612 615 1244 · patrick.crawford@transwestern.com

TRANSWESTERN REAL ESTATE SERVICES

BUSH AVE SURVEY



for information
CONTACT

Russ Crawford · 612 741 4800 · russ.crawford@transwestern.com
Patrick Crawford · 612 615 1244 · patrick.crawford@transwestern.com

 TRANSWESTERN REAL ESTATE SERVICES