

PNC

CENTER

201 EAST FIFTH STREET
CINCINNATI, OHIO

 GroupRMC

CBRE



PNC CENTER

CINCINNATI, OHIO

PNC Center consistently delivering a quality business environment that attracts and retains quality employees and tenants.

\$3M lobby renovation recently completed.

International style architecture that is timeless in its presence and image on the skyline.

Conveniently located at 5th and Main Street in the “heart” of the professional and corporate core of downtown Cincinnati.

The world headquarters of Procter & Gamble Company, Chemed Corporation and Convergys are all within a one block radius of PNC Center.

Fine dining, shopping centers, hotels, The Cincinnati Club, Queen City Club and Fountain Square are all proximately located to the building.

The PNC parking garage, jointly serving the neighboring First Financial Center, accommodates 1,236 vehicles.

Professionally managed on-site by CBRE.

Energy Star designation.



PROPERTY FEATURES



BUILDING SIZE
500,357 RSF



27 Floors



Premier 501,024 SF
Class A+ Office Building



9' Ceilings



Multi-Zone VAV



1 : 1,400 RSF
Parking Ratio



12 Passenger Elevator



Floors 2 - 10:
\$13.95 to \$14.95 NNN
Floors 11 - 16:
\$14.95 to \$15.95 NNN
Floors 17 - 22:
\$15.95 to \$16.95 NNN
Floors 23 - 27:
\$16.95 to \$17.95 NNN



OPERATING EXPENSES
\$11.96 + Electric

ONSITE AMENITIES

Golf Simulator

Full Service Bank

Fitness Center

2 ATM Machines

Coffee Bar

Conference Center

Professional On-Site
Management

24-Hour Security
Personnel





\$3 MILLION
LOBBY RENOVATION

EXPANSIVE
TENANT LOUNGE

CONFERENCE
CENTER

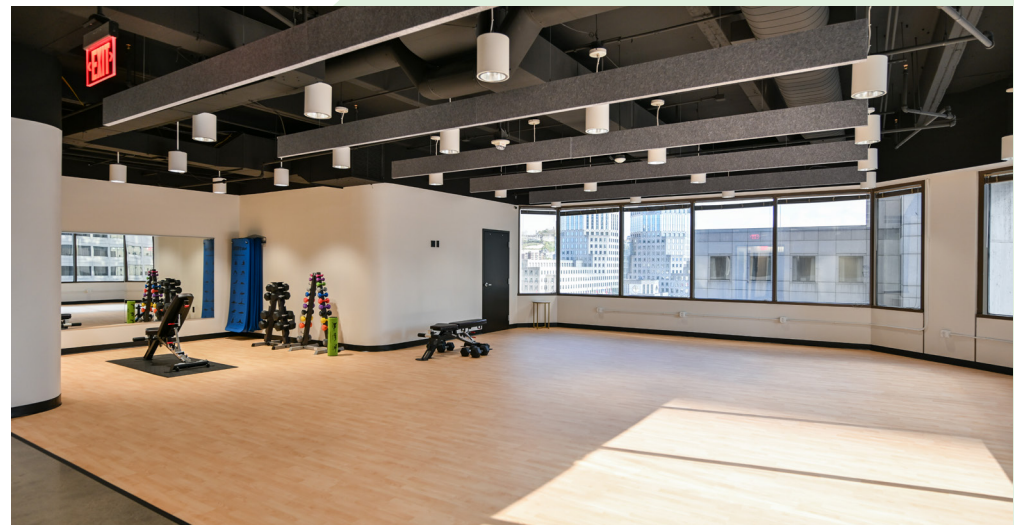
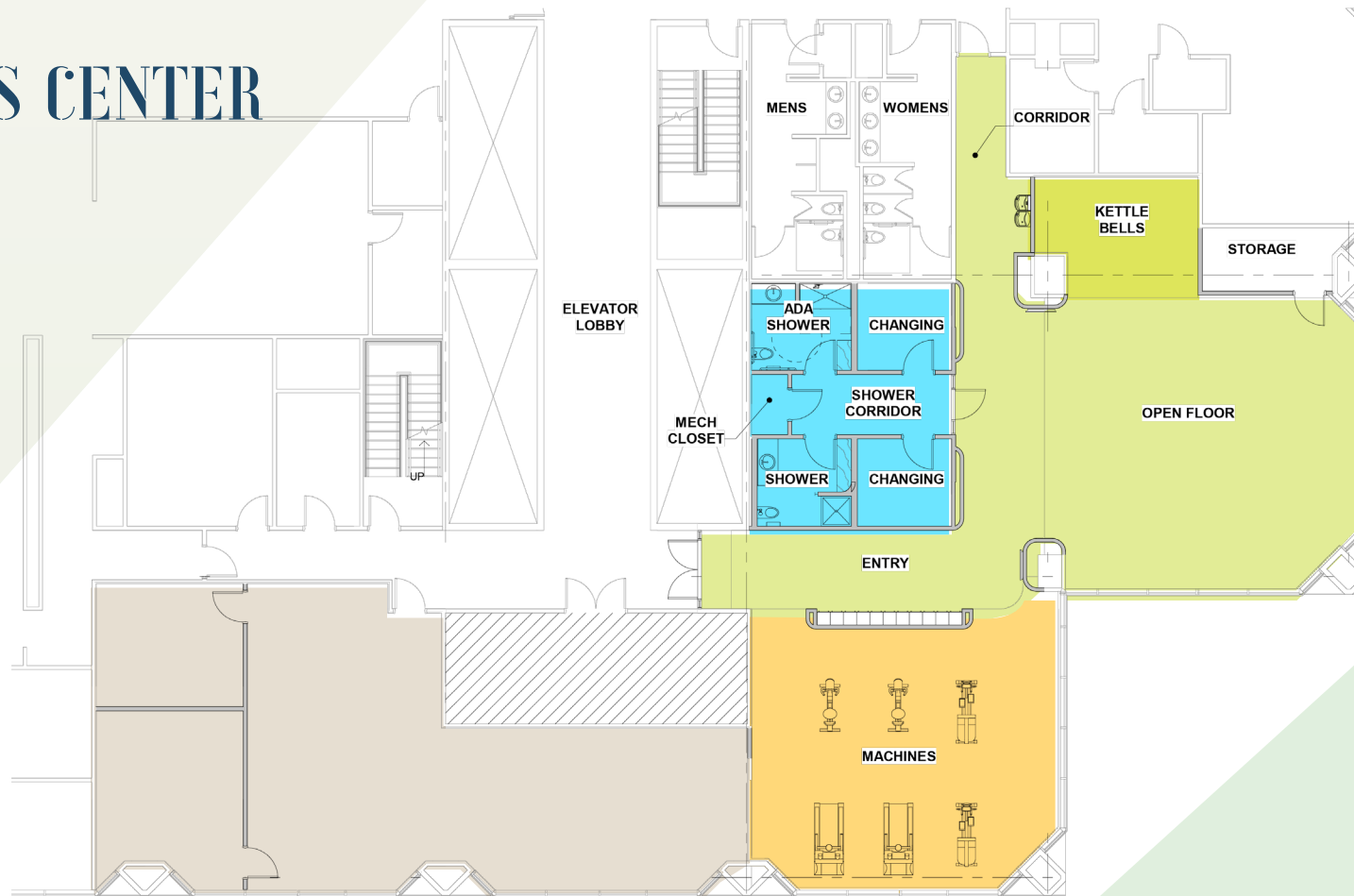
AMENITIZED
FIRST FLOOR
LOBBY

GOLF
STIMULATOR

FITNESS
CENTER



FITNESS CENTER







PNC
CENTER



Cincinnati

PNC
CENTER

Great American Ball Park

Paul Brown Stadium

Smale
Riverfront
Park

Newport Aquarium

Newport

CURRENT AVAILABILITIES

SUITE 2120 / 4,559 SF

SUITE 1820 / 13,962 SF

SUITE 1410 / 4,316 SF

SUITE 1300 / 6,410 SF

SUITE 920 / 3,176 SF

SUITE 710 / 1,700 SF
SUITE 720 / 2,290 SF



AVAILABILITIES

Suite	SF
2120	4,559
1820	13,962
1410	4,316
1300	6,410
920	3,176
710	1,700
720	2,290



PNC Center Garage

201 E Fifth St
Total Spaces: 1,266
513-381-6840

1

Keenes Olympic Garage

120 E 7th St
Total Spaces: 400
859-486-7220

2

URS Garage

36 E 7th St
Total Spaces: 743
513-381-0767

3

Fountain Square North

Under Fountain Square
Total Spaces: 604
513-621-4400

4

Fountain Square South

SP Parking
416 Vine St
Total Spaces: 408
513-381-3648

5

Laz Enterprises (Lot# 1644)

3rd and Main
Total Spaces: 200
513-381-0767

6

8th and Sycamore Garage

315 E 7th St
Total Spaces: 500
513-621-4400

7

ABM Parking Services

(Lot #1636)
230 E 7th St
Total Spaces: 239
513-929-9200

8

The Banks Garage

99 E 2nd St
Total Spaces: 4,097
513-946-8102

9

East Garage

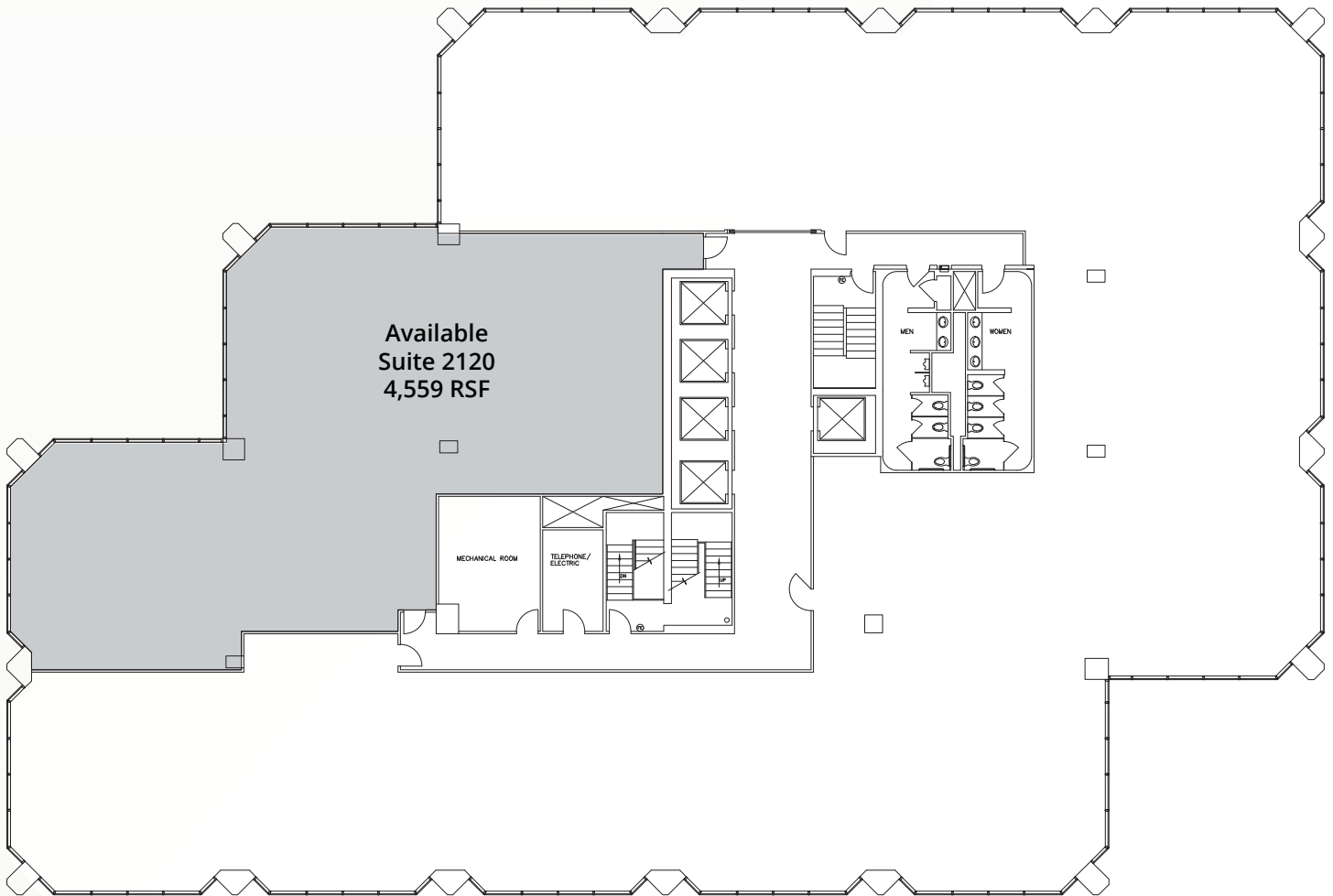
443 E Pete Rose Way
Total Spaces: 1,185
513-946-8102

10

Queen City Square Garage

340 Sycamore St.
Total Spaces: 2,291
513-361-4019

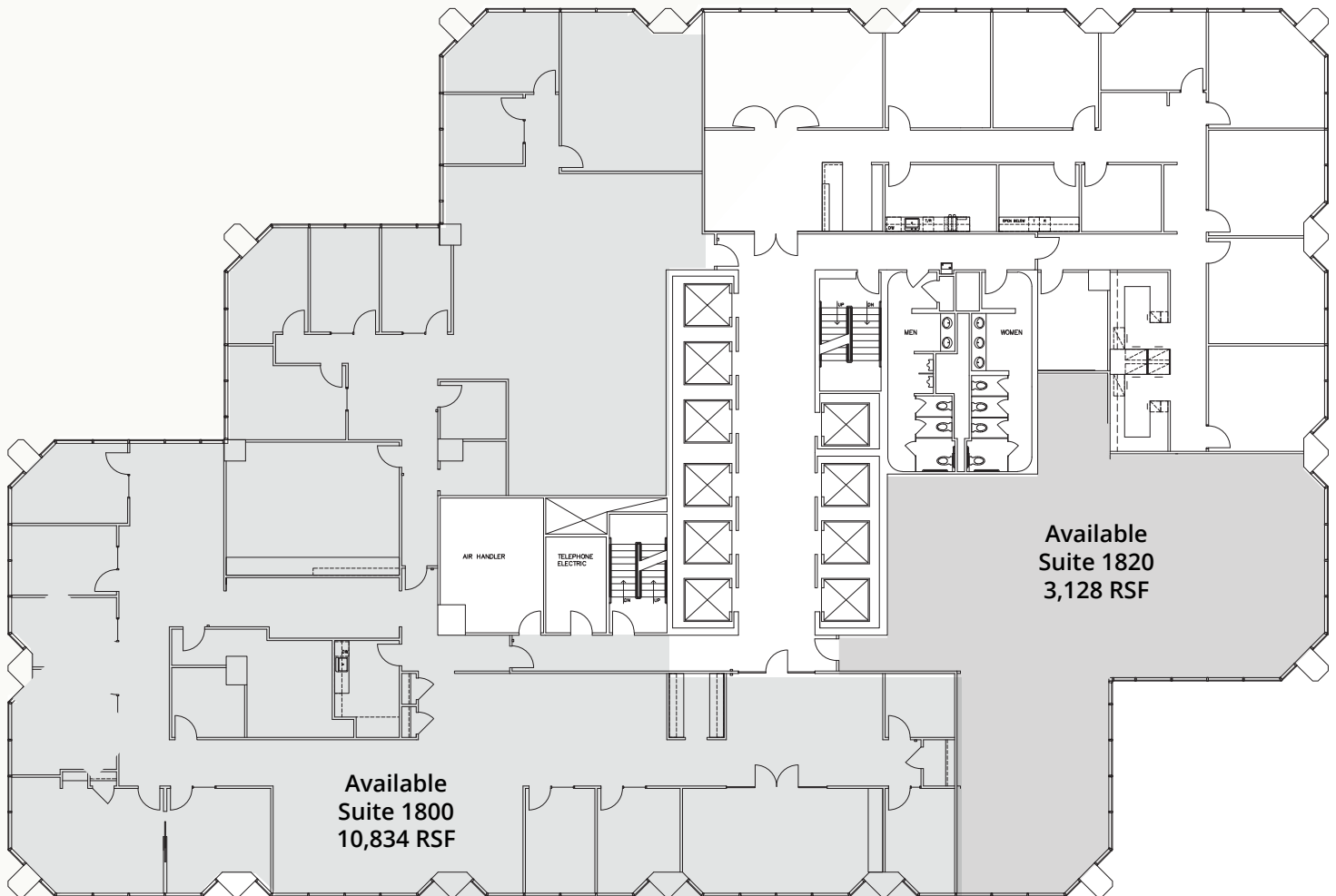
21ST FLOOR



□ Occupied
■ Available

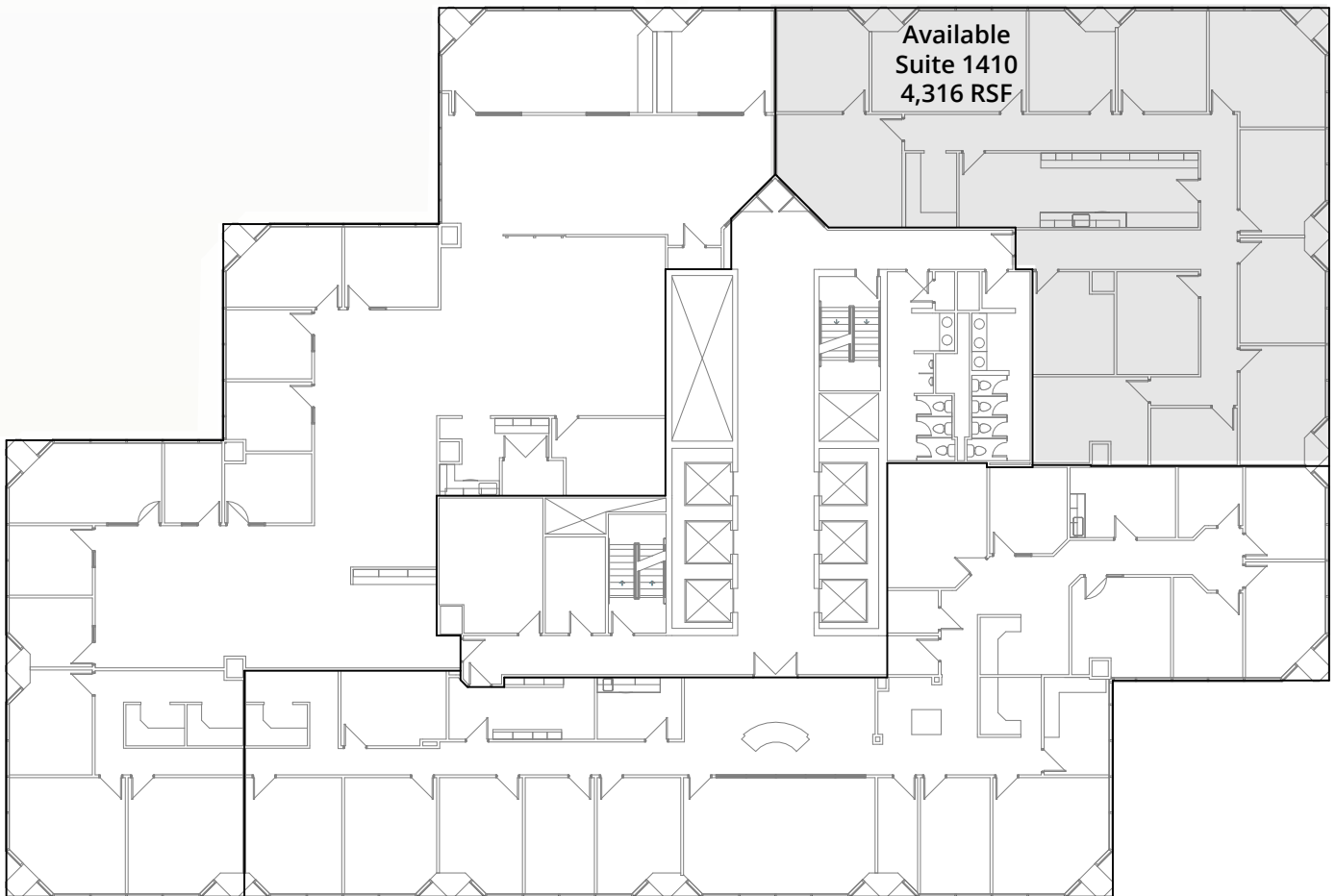
18TH FLOOR

(UP TO 13,962 RSF CONTIGUOUS)



□ Occupied
■ Available

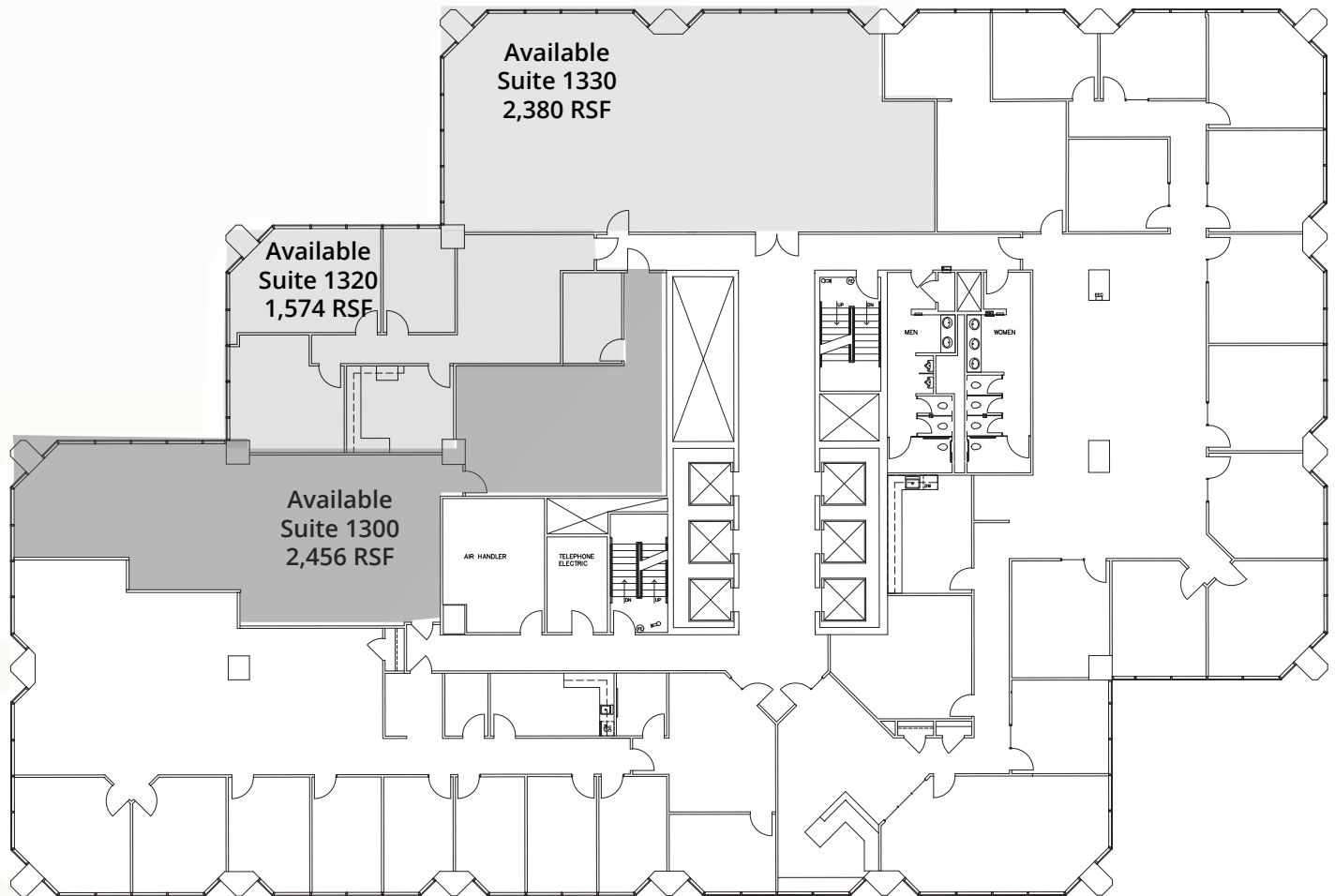
14TH FLOOR



□ Occupied
■ Available

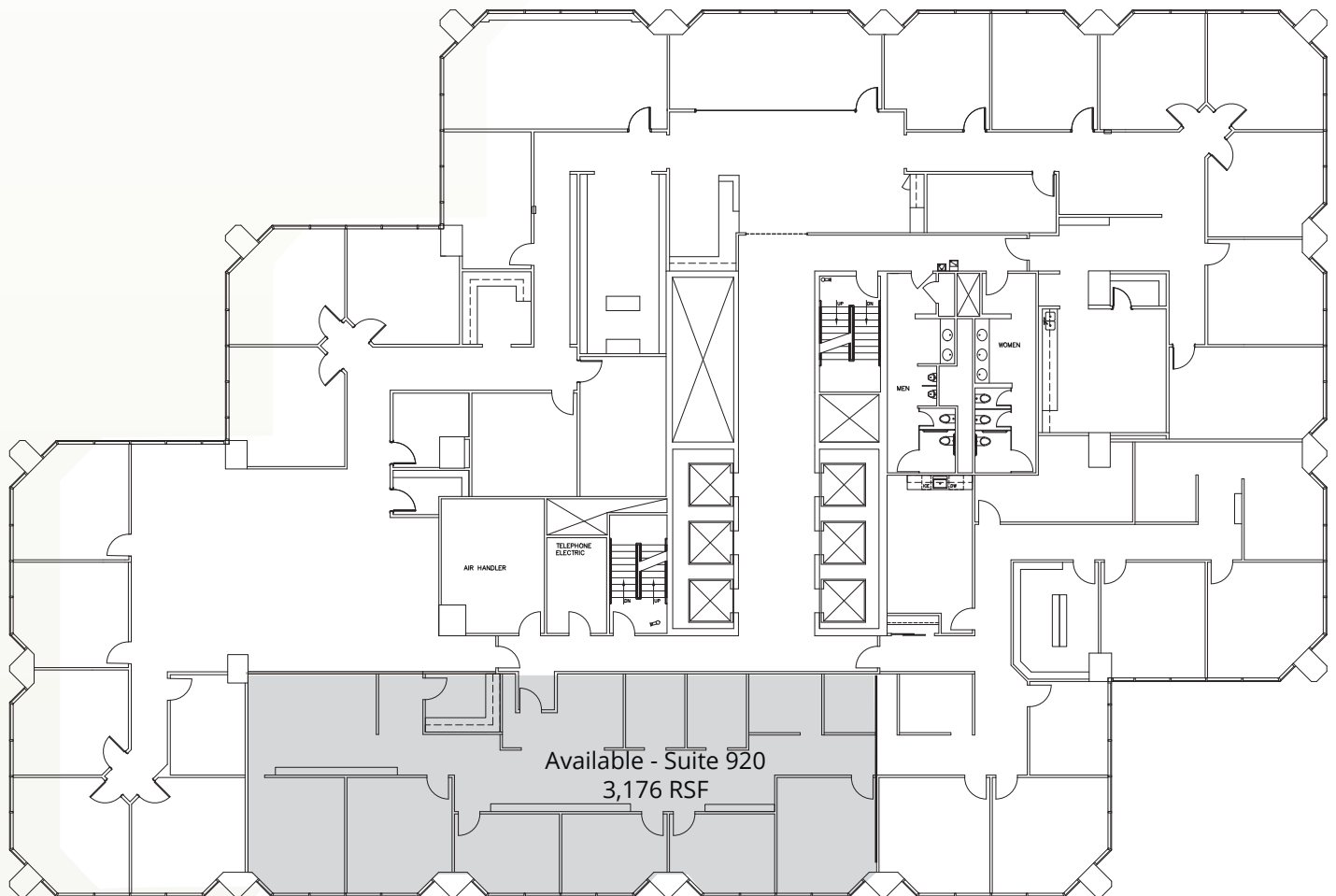
13TH FLOOR

(UP TO 6,410 RSF CONTIGUOUS)



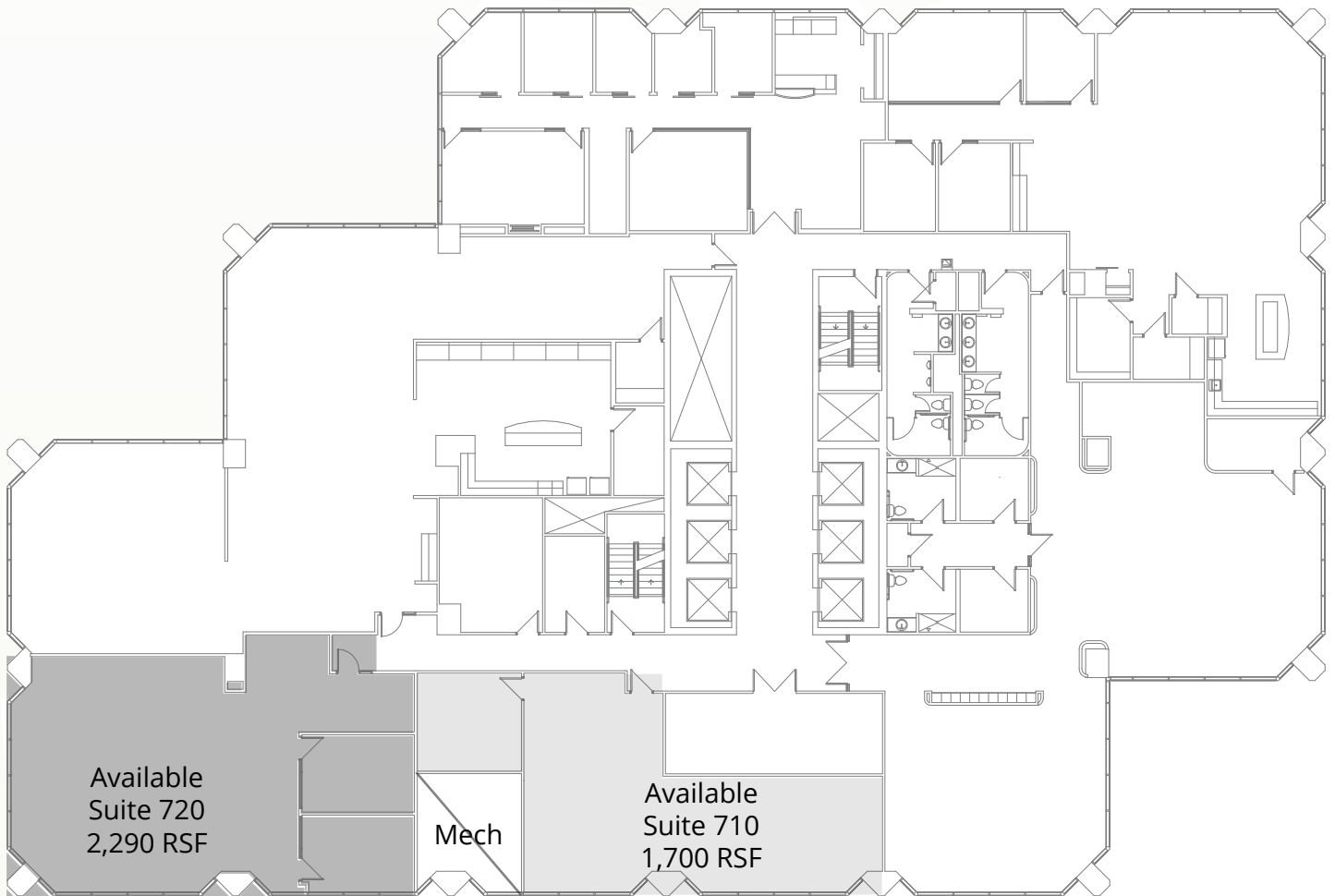
- Occupied
- Available

9TH FLOOR



- Occupied
- Available

7TH FLOOR



□ Occupied
■ Available

PNC

CENTER

For leasing information, please contact:

TRAVIS LIKES

First Vice President

+1 513 369 1364

travis.likes@cbre.com

JOHN ECKERT

Senior Vice President

+1 513 369 1321

john.eckert@cbre.com

CBRE

201 East Fifth Street

Suite 2200

Cincinnati, Ohio 45202

www.cbre.com/pnccenter



©2021 CBRE, Inc. All rights reserved. This information has been obtained from sources believed reliable, but has not been verified for accuracy or completeness. You should conduct a careful, independent investigation of the property and verify all information. Any reliance on this information is solely at your own risk. CBRE and the CBRE logo are service marks of CBRE, Inc. All other marks displayed on this document are the property of their respective owners, and the use of such logos does not imply any affiliation with or endorsement of CBRE. Photos herein are the property of their respective owners. Use of these images without the express written consent of the owner is prohibited. PMStudio_Jan2021