

DARWIN TECHNOLOGY CENTER

5939 Darwin Ct, Suites 107-109 // Carlsbad, CA

 1,200 Amps; 277/480V



FOR LEASE

HEAVY POWER R&D/FLEX UNIT

7,632 SF AVAILABLE

 CUSHMAN &
WAKEFIELD

CBRE

PROPERTY HIGHLIGHTS



- Proximity to retail, restaurants & services
- Beautifully landscaped with outdoor rest / eating areas for tenants
- Adjacent to McClellan-Palomar Airport
- High quality tenant improvements
- Fiber Service to project provided by Cox Communications
- Abundant parking
- Corporate neighbors and high-end image
- Zoning: CM, Carlsbad



7,632 SF



Class A Flex Project



Built in 2000



18' Ceiling Height



Grade level loading



Heavy Power:
1,200 Amps; 277/480 V



Located within the
Carlsbad Research Center

FLOOR PLAN

107-109

SUITES AVAILABLE

7,632

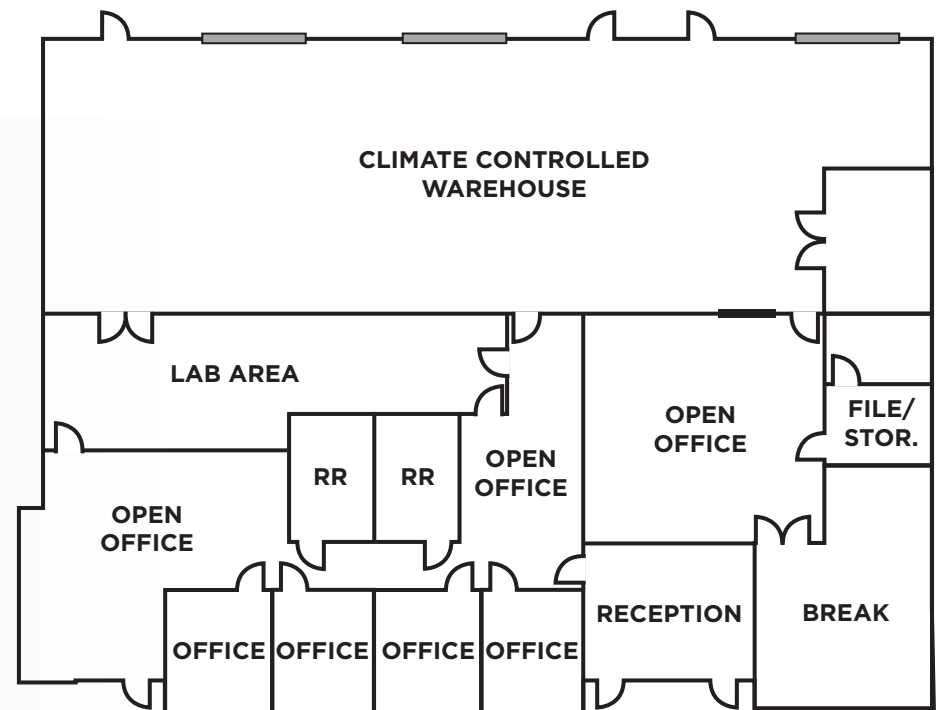
RENTABLE SQUARE FEET

1,200 Amps; 277/480 V

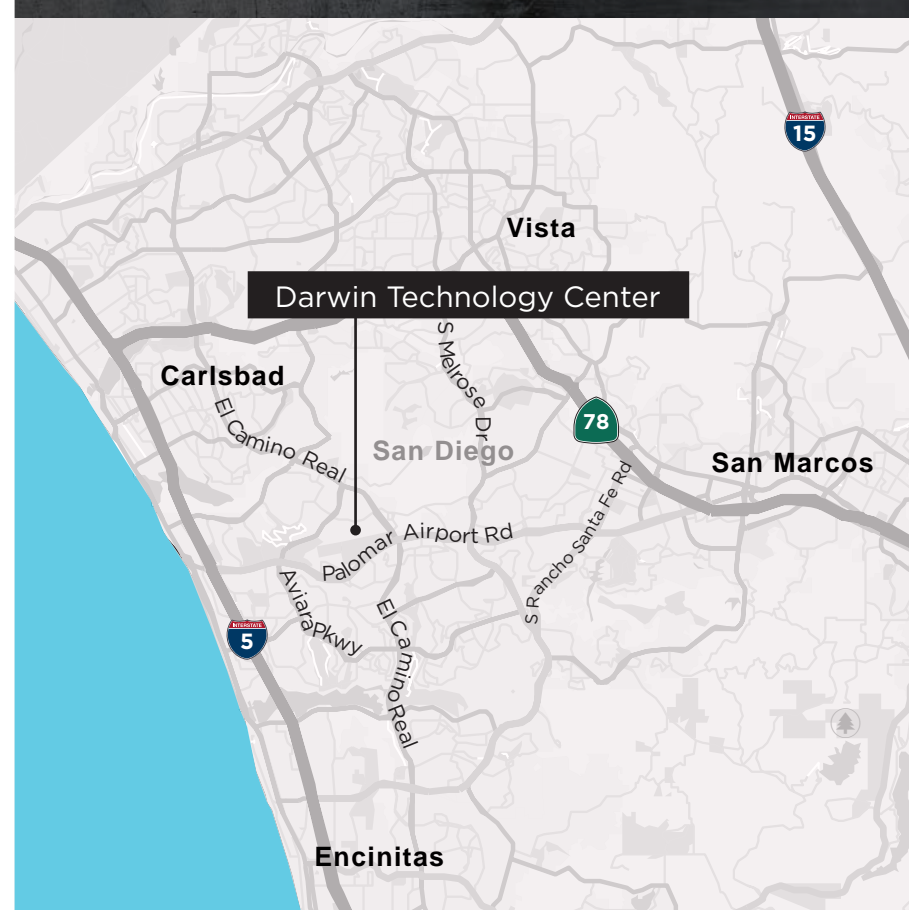
HEAVY POWER

\$1.65 / SF

LEASE RATE MG + \$0.25 CAM



LOCATION



5939 DARWIN COURT, SUITES 107-109 // CARLSBAD, CA

FOR LEASE



INDUSTRIAL:

JOE CROTTY

760.473.1811

joe.crotty@cushwake.com

Lic. No.01369821

CONOR BOYLE

760.458.5739

conor.boyle@cushwake.com

Lic. No.01813305

TYLER STEMLEY

760.908.4270

tyler.stemley@cushwake.com

Lic. No.02003867

OFFICE:

BOB COWAN

760.438.8510

bob.cowan@cbre.com

Lic. No.01838109

©2024 Cushman & Wakefield. All rights reserved. The information contained in this communication is strictly confidential. This information has been obtained from sources believed to be reliable but has not been verified. NO WARRANTY OR REPRESENTATION, EXPRESS OR IMPLIED, IS MADE AS TO THE CONDITION OF THE PROPERTY (OR PROPERTIES) REFERENCED HEREIN OR AS TO THE ACCURACY OR COMPLETENESS OF THE INFORMATION CONTAINED HEREIN, AND SAME IS SUBMITTED SUBJECT TO ERRORS, OMISSIONS, CHANGE OF PRICE, RENTAL OR OTHER CONDITIONS, WITHDRAWAL WITHOUT NOTICE, AND TO ANY SPECIAL LISTING CONDITIONS IMPOSED BY THE PROPERTY OWNER(S). ANY PROJECTIONS, OPINIONS OR ESTIMATES ARE SUBJECT TO UNCERTAINTY AND DO NOT SIGNIFY CURRENT OR FUTURE PROPERTY PERFORMANCE.

