

FOR LEASE

1250 Springfield Pike Cincinnati, OH 45215



NAI Bergman

Office | 1,055 - 7,677 SF

- Renovations / Furniture Negotiable
- Flexible Floor Plans Below
- Located in the Heart of Wyoming
- Ample Parking
- Approx 5 Minute Drive To I-75
- Lease Rate: \$13.00 / SF Gross

DEMOGRAPHICS

STATS	POPULATION	AVG. HH INCOME
1 MILES	9,106	\$119,073
3 MILES	61,648	\$107,984
5 MILE	200,342	\$98,634

* Figures shown represent estimates



Hayden Batchelor
+1 513 322 6318
hbatchelor@bergman-group.com

FOR LEASE

1250 Springfield Pike Cincinnati, OH 45215



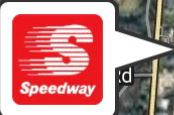
No Warranty Or Representation, Express Or Implied, Is Made As To The Accuracy Of The Information Contained Herein, And The Same Is Submitted Subject To Errors, Omissions, Change Of Price, Rental Or Other Conditions, Prior Sale, Lease Or Financing, Or Withdrawal Without Notice, And Of Any Special Listing Conditions Imposed By Our Principals No Warranties Or Representations Are Made As To The Condition Of The Property Or Any Hazards Contained Therein Are Any To Be Implied.

✉ **Hayden Batchelor**
+1 513 322 6318
hbatchelor@bergman-group.com

NALBergman

FOR LEASE

1250 Springfield Pike Cincinnati, OH 45215



SITE
4



Wyoming



Google

Map data ©2024 Google Imagery ©2024 Airbus, CNES / Airbus, Landsat / Copernicus, Maxar Technologies, Sanborn, U.S. Geological Survey, USDA/FPAC/GEO

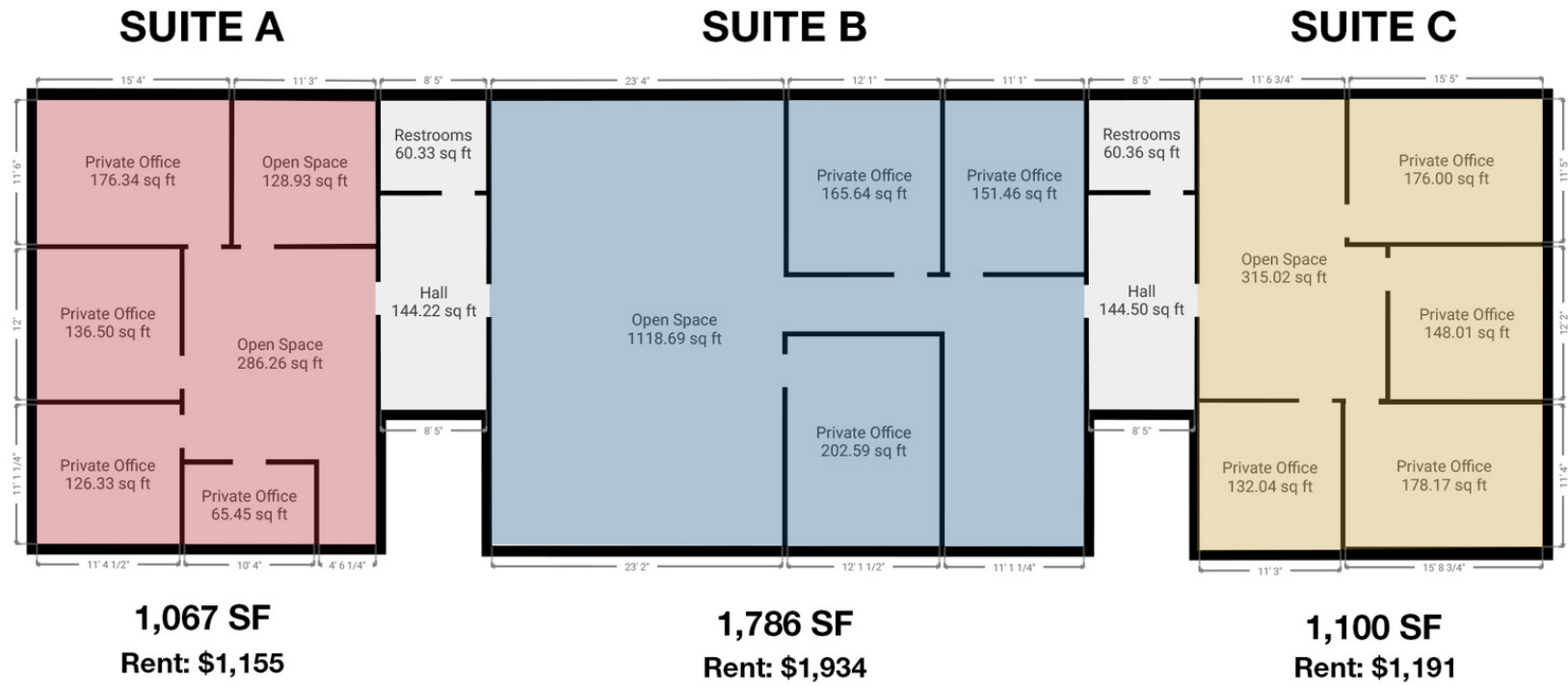
No Warranty Or Representation, Express Or Implied, Is Made As To The Accuracy Of The Information Contained Herein, And The Same Is Submitted Subject To Errors, Omissions, Change Of Price, Rental Or Other Conditions, Prior Sale, Lease Or Financing, Or Withdrawal Without Notice, And Of Any Special Listing Conditions Imposed By Our Principals No Warranties Or Representations Are Made As To The Condition Of The Property Or Any Hazards Contained Therein Are Any To Be Implied.

✉ **Hayden Batchelor**
+1 513 322 6318
hbatchelor@bergman-group.com

NABergman

FOR LEASE

1250 Springfield Pike Cincinnati, OH 45215



First Floor

No Warranty Or Representation, Express Or Implied, Is Made As To The Accuracy Of The Information Contained Herein, And The Same Is Submitted Subject To Errors, Omissions, Change Of Price, Rental Or Other Conditions, Prior Sale, Lease Or Financing, Or Withdrawal Without Notice, And Of Any Special Listing Conditions Imposed By Our Principals No Warranties Or Representations Are Made As To The Condition Of The Property Or Any Hazards Contained Therein Are Any To Be Implied.

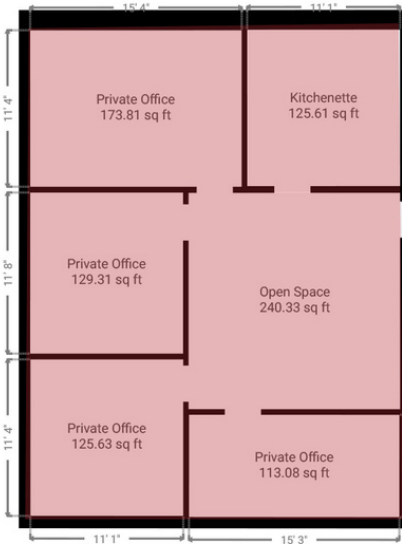
✉ **Hayden Batchelor**
+1 513 322 6318
hbatchelor@bergman-group.com

NALBergman

FOR LEASE

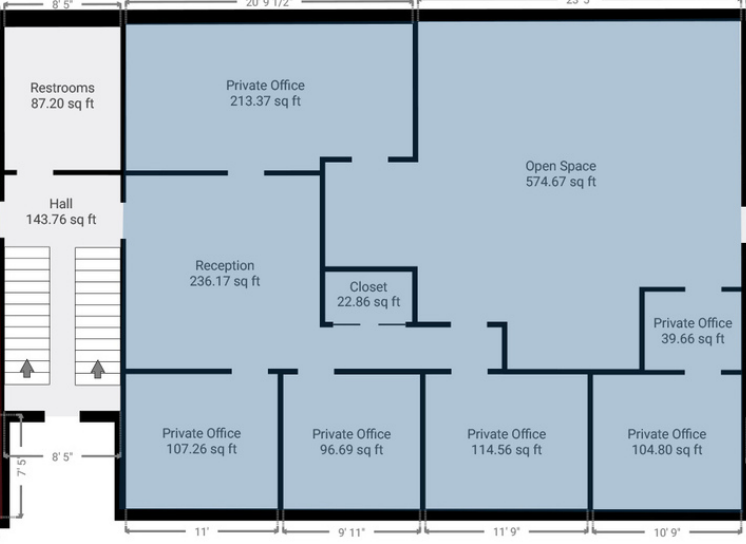
1250 Springfield Pike Cincinnati, OH 45215

SUITE D



1,055 SF
Rent: \$1,142.91

SUITE E



1,594 SF
Rent: \$1,726.83

SUITE F



1,075 SF
Rent: \$1,164

Second Floor

No Warranty Or Representation, Express Or Implied, Is Made As To The Accuracy Of The Information Contained Herein, And The Same Is Submitted Subject To Errors, Omissions, Change Of Price, Rental Or Other Conditions, Prior Sale, Lease Or Financing, Or Withdrawal Without Notice, And Of Any Special Listing Conditions Imposed By Our Principals No Warranties Or Representations Are Made As To The Condition Of The Property Or Any Hazards Contained Therein Are Any To Be Implied.

✉ **Hayden Batchelor**
+1 513 322 6318
hbatchelor@bergman-group.com



FOR LEASE

1250 Springfield Pike Cincinnati, OH 45215

Summary Profile

2010-2020 Census, 2023 Estimates with 2028 Projections
Calculated using Weighted Block Centroid from Block Groups



Lat/Lon: 39.2382/-84.4713

1250 Springfield Pike Cincinnati, OH 45215	1 mi radius	3 mi radius	5 mi radius
Population			
2023 Estimated Population	9,106	61,648	200,342
2028 Projected Population	8,893	61,470	197,362
2020 Census Population	8,989	62,121	204,666
2010 Census Population	8,775	60,151	198,284
Projected Annual Growth 2023 to 2028	-0.5%	-	-0.3%
Historical Annual Growth 2010 to 2023	0.3%	0.2%	-
2023 Median Age	38.7	40.6	39.3
Households			
2023 Estimated Households	3,466	26,308	85,970
2028 Projected Households	3,332	25,808	83,253
2020 Census Households	3,440	26,142	86,902
2010 Census Households	3,388	25,403	84,219
Projected Annual Growth 2023 to 2028	-0.8%	-0.4%	-0.6%
Historical Annual Growth 2010 to 2023	0.2%	0.3%	0.2%
Income			
2023 Estimated Average Household Income	\$119,073	\$107,984	\$98,634
2023 Estimated Median Household Income	\$81,833	\$77,963	\$70,970
2023 Estimated Per Capita Income	\$45,448	\$46,208	\$42,461
Education (Age 25+)			
2023 Estimated Elementary (Grade Level 0 to 8)	2.9%	2.9%	2.8%
2023 Estimated Some High School (Grade Level 9 to 11)	3.3%	5.2%	5.5%
2023 Estimated High School Graduate	28.8%	28.1%	28.5%
2023 Estimated Some College	16.7%	19.4%	19.9%
2023 Estimated Associates Degree Only	5.8%	7.4%	8.4%
2023 Estimated Bachelors Degree Only	22.5%	21.8%	21.5%
2023 Estimated Graduate Degree	19.9%	15.2%	13.2%
Business			
2023 Estimated Total Businesses	362	2,874	9,055
2023 Estimated Total Employees	3,353	39,258	128,156
2023 Estimated Employee Population per Business	9.3	13.7	14.2
2023 Estimated Residential Population per Business	25.1	21.4	22.1

©2024, Sites USA, Chandler, Arizona, 480-491-1112 Demographic Source: Applied Geographic Solutions 11/2023, TIGER Geography - RS1

This report was produced using data from private and government sources deemed to be reliable. The information herein is provided without representation or warranty.

page 1 of 1

No Warranty Or Representation, Express Or Implied, Is Made As To The Accuracy Of The Information Contained Herein, And The Same Is Submitted Subject To Errors, Omissions, Change Of Price, Rental Or Other Conditions, Prior Sale, Lease Or Financing, Or Withdrawal Without Notice, And Of Any Special Listing Conditions Imposed By Our Principals No Warranties Or Representations Are Made As To The Condition Of The Property Or Any Hazards Contained Therein Are Any To Be Implied.

 **Hayden Batchelor**
+1 513 322 6318
hbatchelor@bergman-group.com

