



11,077 ± SF
Available

FOR LEASE

786 EASTERN PARKWAY
LOUISVILLE, KENTUCKY

HOGAN
REAL ESTATE

PROPERTY DESCRIPTION

786 EASTERN PARKWAY
LOUISVILLE, KENTUCKY



Features

- + Available is 11,077 SF of retail space in southwest Louisville
- + Excellent corner location at Eastern Parkway & S. Preston Street intersection
- + The neighborhood center has direct access to S. Preston Street from Miller Avenue
- + The property is zoned C-1 and has all utilities available to site

Demographics

	1 Mile	3 Miles	5 Miles
Population	13,143	117,718	268,112
Median Household Income	\$59,765	\$43,797	\$45,110



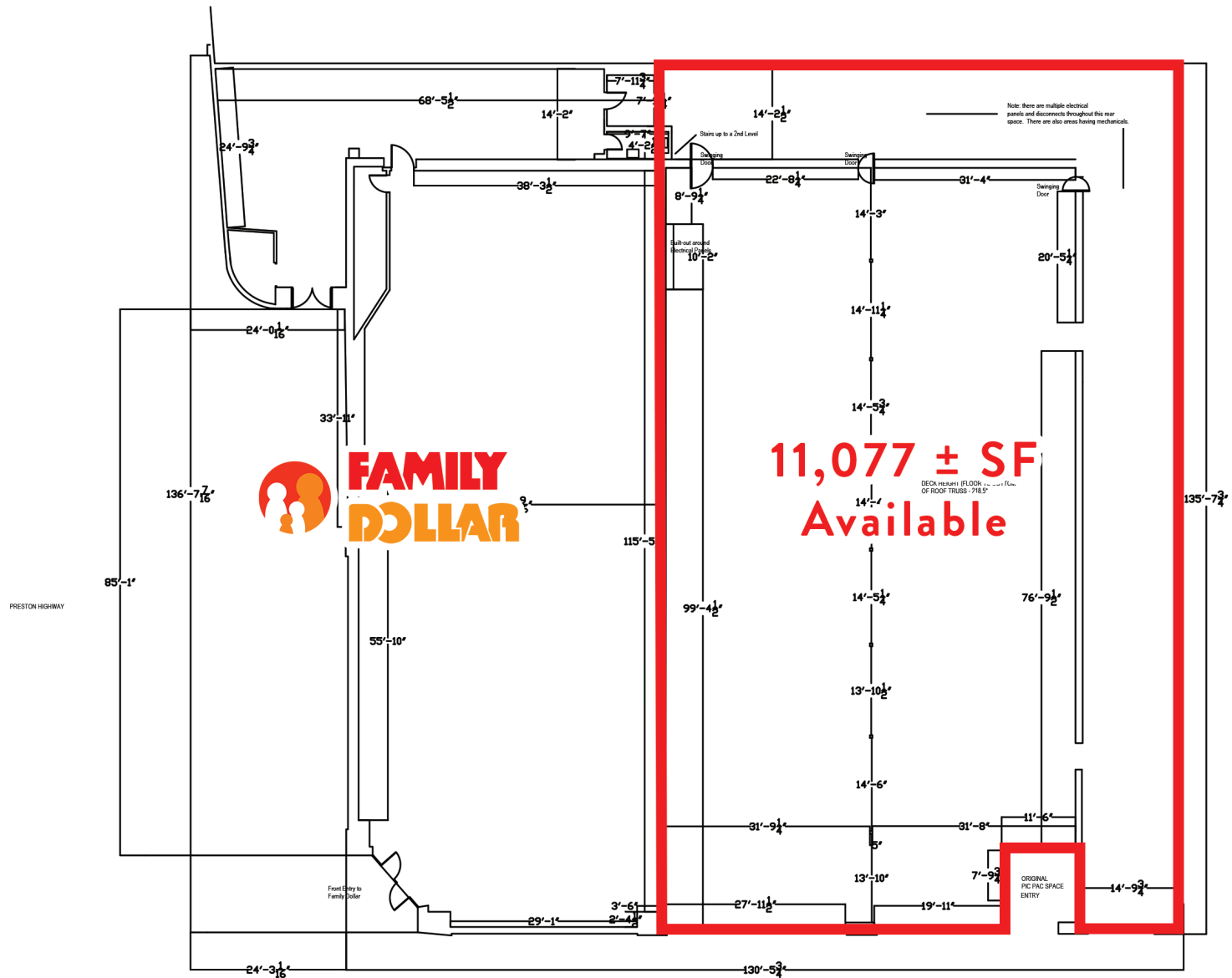
11,077 ± SF
RETAIL SPACE
available for lease



Over 17,586 (20)
VEHICLES PER DAY
along Eastern Parkway
in front of site

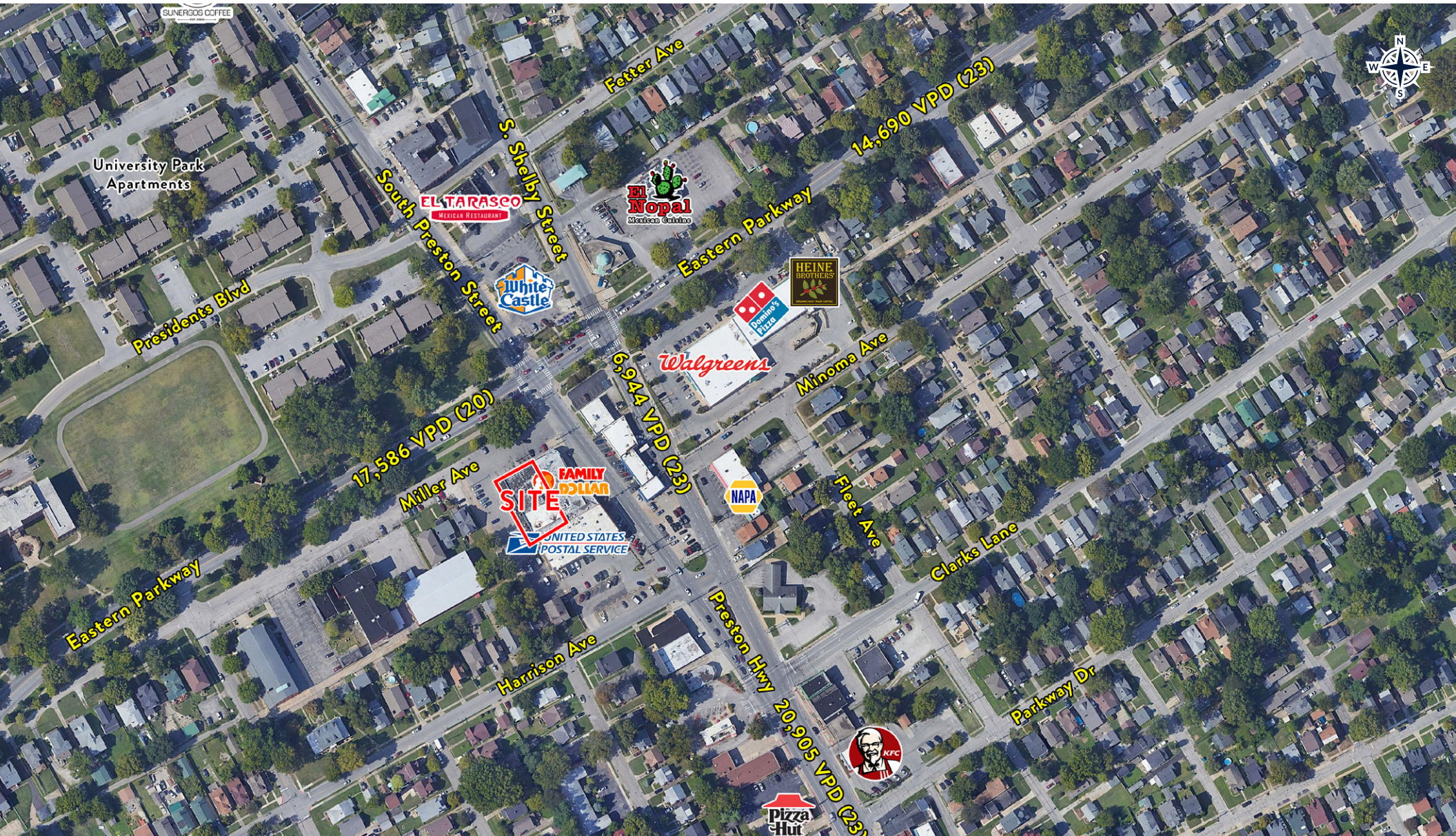
SITE PLAN

786 EASTERN PARKWAY
LOUISVILLE, KENTUCKY



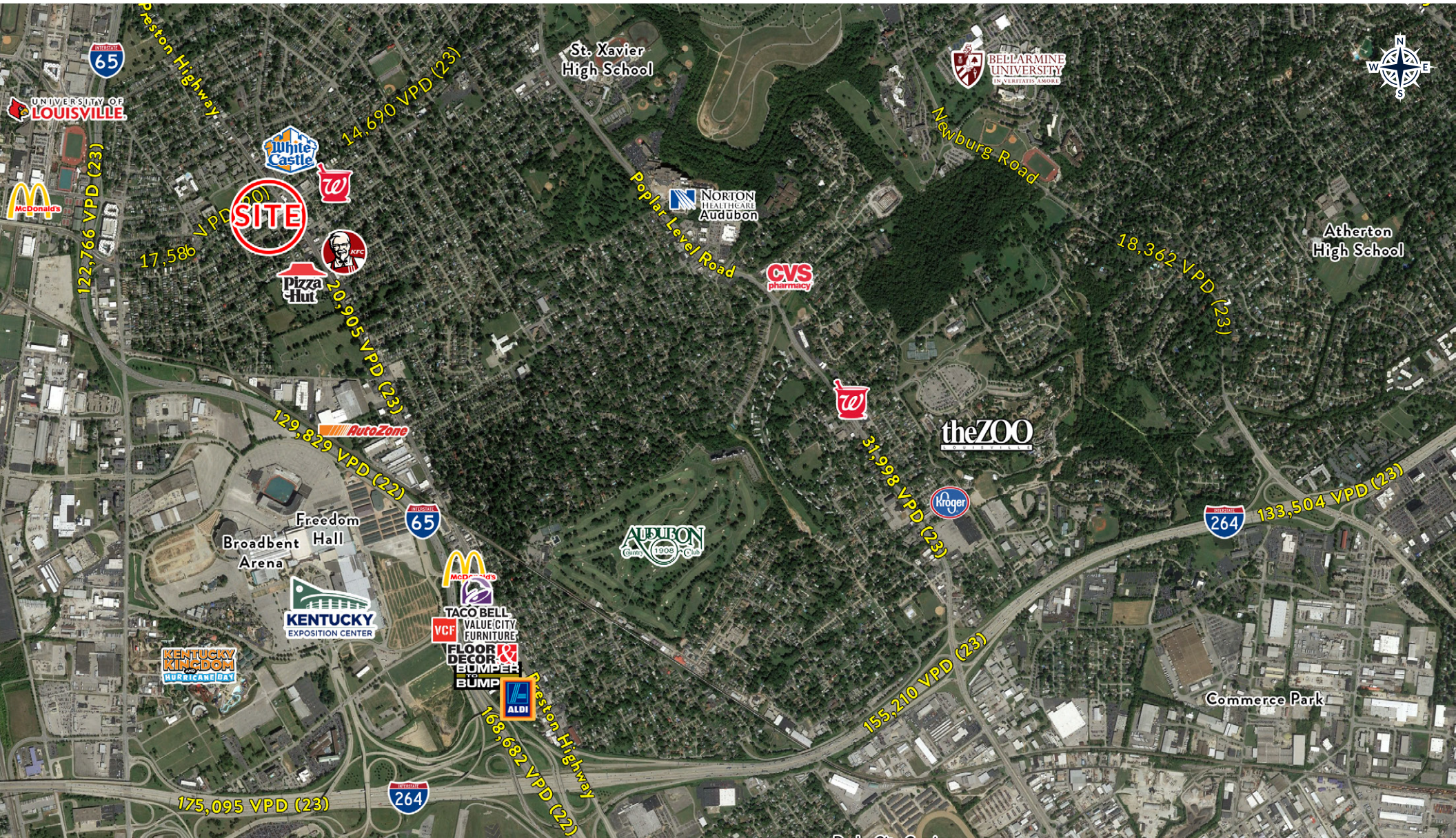
IMMEDIATE AREA AERIAL

786 EASTERN PARKWAY
LOUISVILLE, KENTUCKY



TRADE AREA AERIAL

786 EASTERN PARKWAY
LOUISVILLE, KENTUCKY



HOGAN REAL ESTATE

PROPERTY CONTACT



Ashley McCarty

D: 502.271.5815

M: 502.426.1050

F: 502.426.1223

amccarty@hogandev.com