

NEW CONSTRUCTION OFFICE SPACE

1380 CENTER ROAD, VENICE, FLORIDA 34292

FOR LEASE



Scott Mersinger

Partner

608.432.2531

Scott.Mersinger@TrinityCRE.com

Anthony Gambino

Associate

518.361.5002

Anthony.Gambino@TrinityCRE.com

Rick Ikeler

Senior Advisor

239.334.3040 x207

Rick.Ikeler@TrinityCRE.com

Dan O'Berski

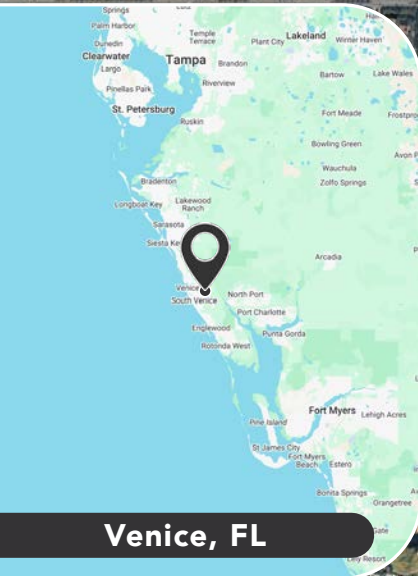
Partner/Managing Broker

239.334.3040

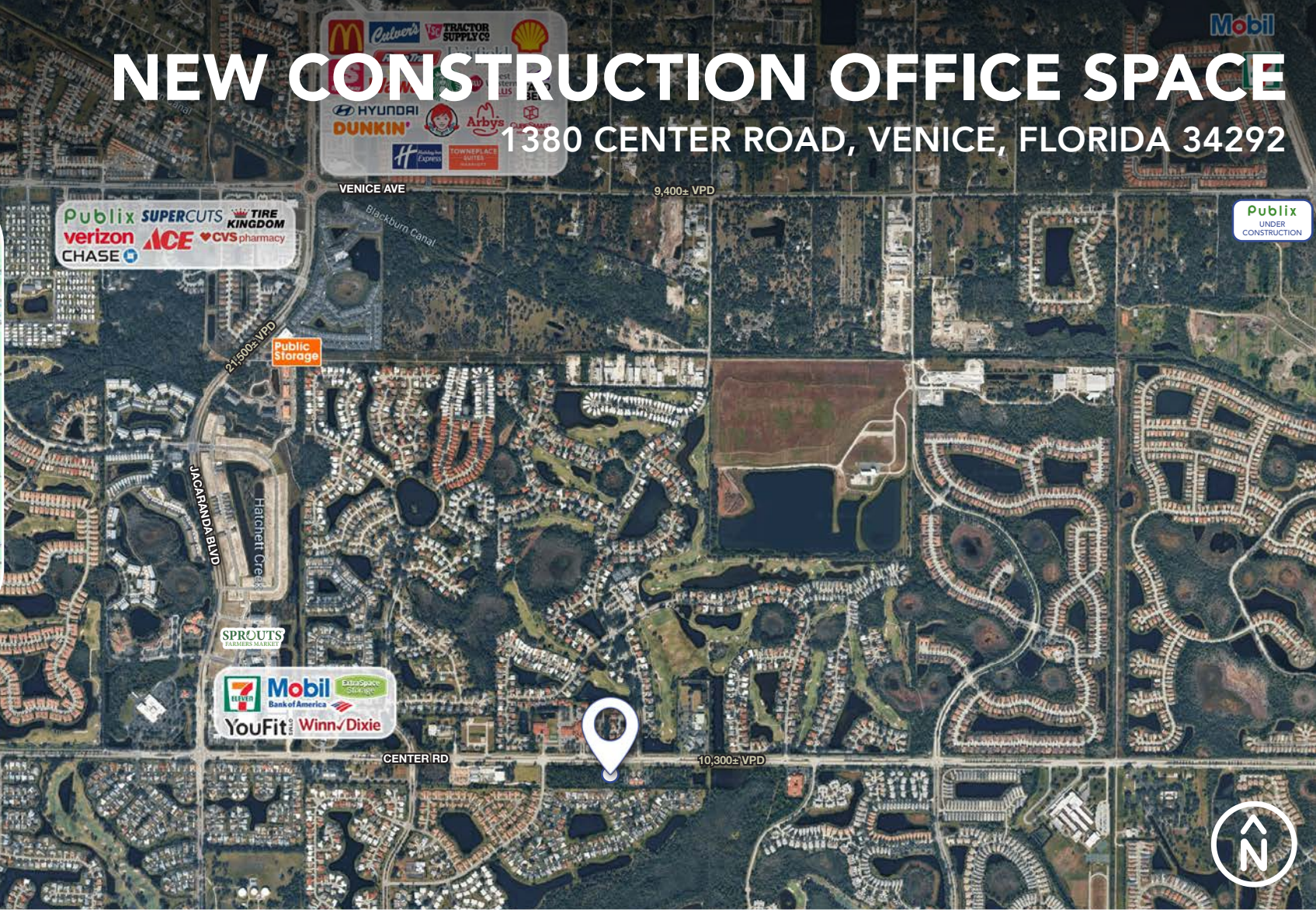
Dan.OBerski@TrinityCRE.com

NEW CONSTRUCTION OFFICE SPACE

1380 CENTER ROAD, VENICE, FLORIDA 34292



Venice, FL



2026 DEMOGRAPHICS

1380 CENTER ROAD



AVERAGE H.H INCOME

1 MILE	3 MILE	5 MILE
\$115,268	\$124,561	\$128,737



POPULATION

5,819	43,055	96,837
-------	--------	--------



EMPLOYMENT DENSITY

855	11,608	28,953
-----	--------	--------

PROPERTY FEATURES

LEASE RATE	\$32 - \$37 PSF NNN
AVAILABLE	2,500 - 5,000 SF
ZONING	OPI (Sarasota County)
LOCATION	1380 Center Road offers convenient access along Center Road in Venice, with a functional layout and on-site area for parking.



TrinityCRE.com

9450 Corkscrew Palms Cir • Suite 101 • Estero, FL 33928

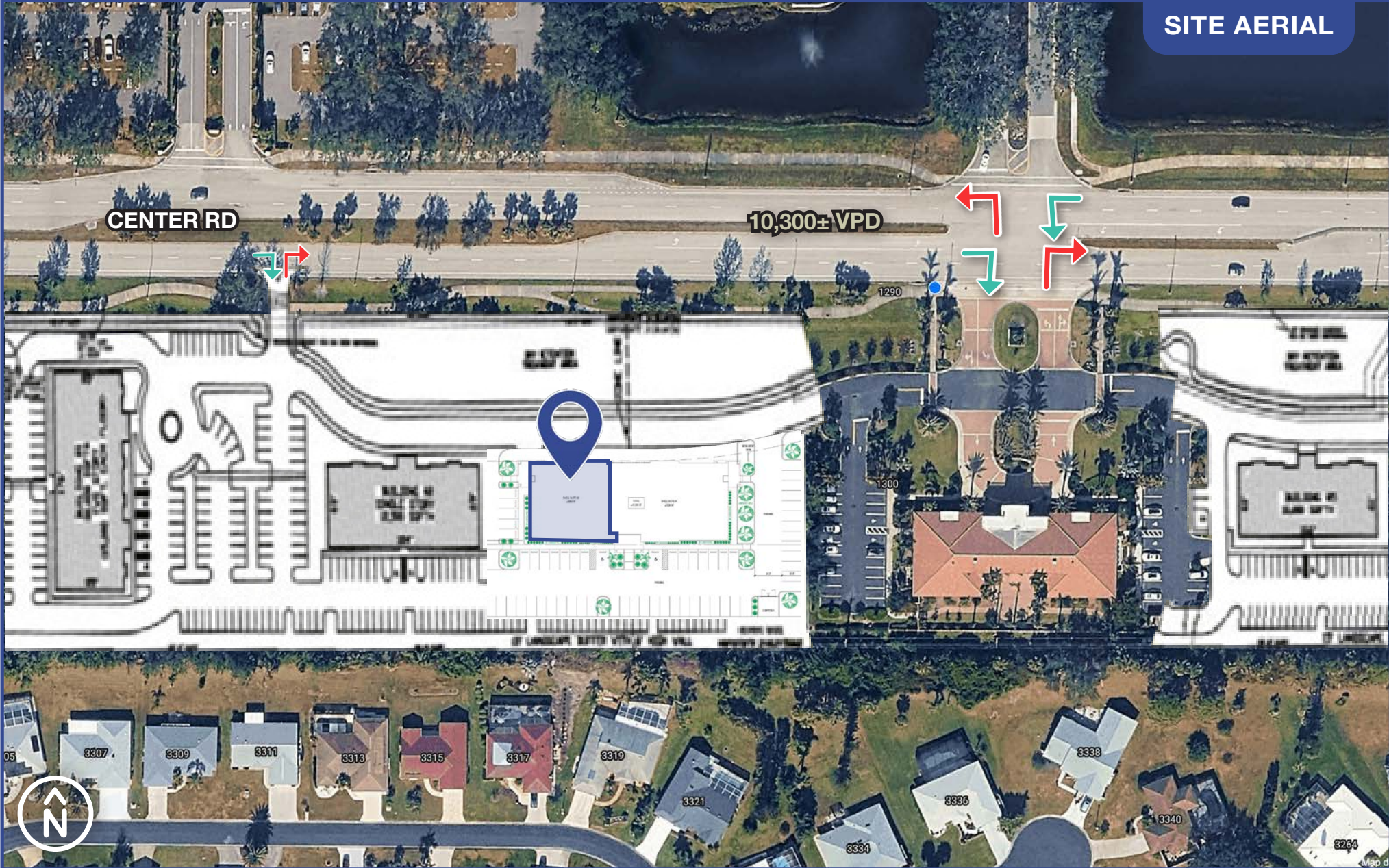
© 2026 Trinity Commercial Group

This information is considered accurate, but not guaranteed.



NEW CONSTRUCTION OFFICE SPACE

1380 CENTER ROAD, VENICE, FLORIDA 34292

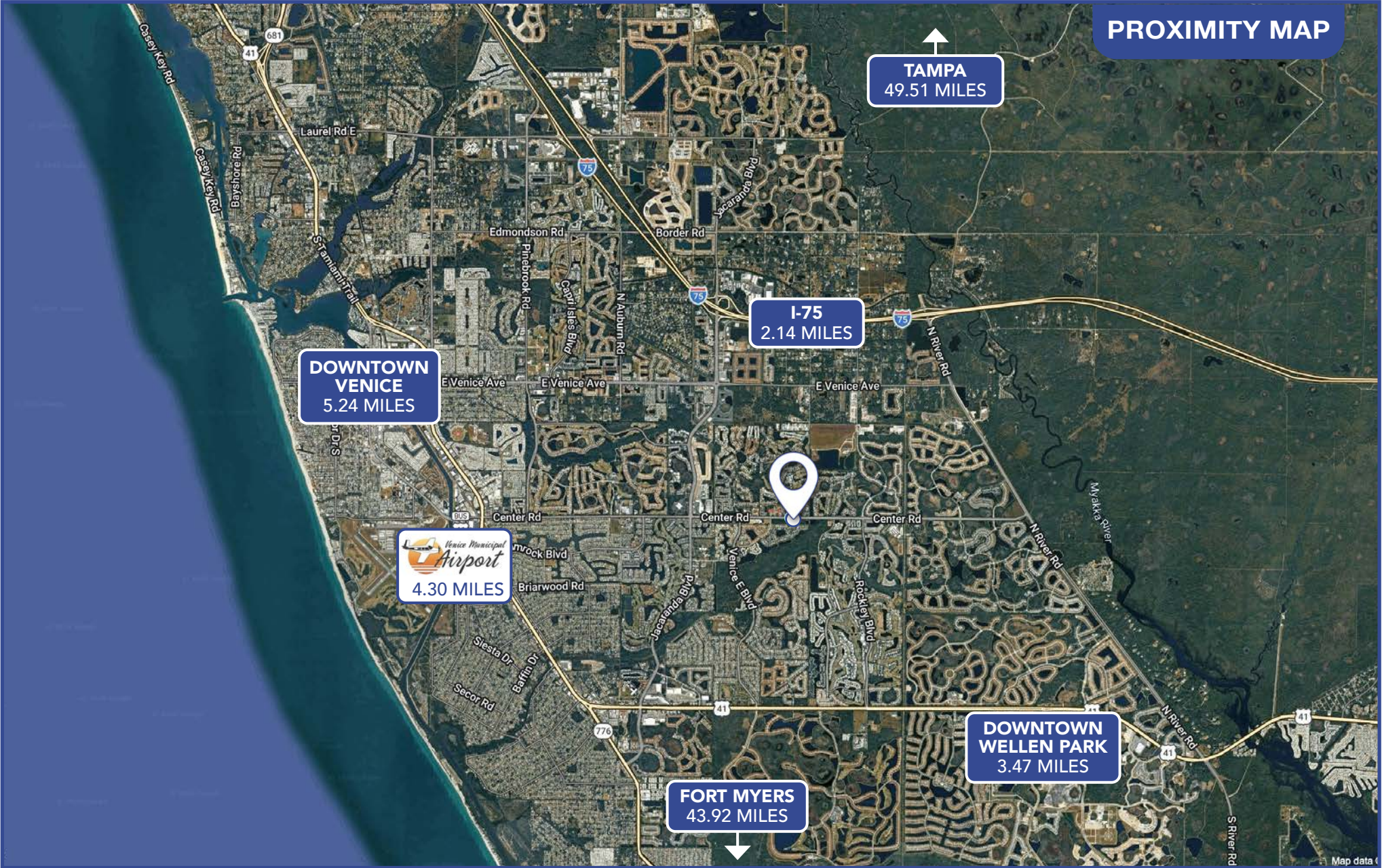


TrinityCRE.com
9450 Corkscrew Palms Cir • Suite 101 • Estero, FL 33928
© 2026 Trinity Commercial Group
This information is considered accurate, but not guaranteed.



NEW CONSTRUCTION OFFICE SPACE

1380 CENTER ROAD, VENICE, FLORIDA 34292



TrinityCRE.com
9450 Corkscrew Palms Cir • Suite 101 • Estero, FL 33928
© 2026 Trinity Commercial Group
This information is considered accurate, but not guaranteed.



NEW CONSTRUCTION OFFICE SPACE

1380 CENTER ROAD, VENICE, FLORIDA 34292



TrinityCRE.com
9450 Corkscrew Palms Cir • Suite 101 • Estero, FL 33928
© 2026 Trinity Commercial Group
This information is considered accurate, but not guaranteed.

MEMBER OF:
SITE SOURCE
RETAIL BROKER NETWORK

NEW CONSTRUCTION OFFICE SPACE

1380 CENTER ROAD, VENICE, FLORIDA 34292



TrinityCRE.com
9450 Corkscrew Palms Cir • Suite 101 • Estero, FL 33928
© 2026 Trinity Commercial Group
This information is considered accurate, but not guaranteed.

