

Meridian Plaza

3787 N Meridian Street, Indianapolis, IN 46205



FOR LEASE

TRAFFIC COUNTS

38th Street - 28,230 ADT

Meridian Street - 13,500

- 1,500 sf coming available (former salon)
- 1,400 sf end cap available
- Extremely high daytime population
- Located at a signalized intersection
- Excellent visibility from 38th Street

CONTACT

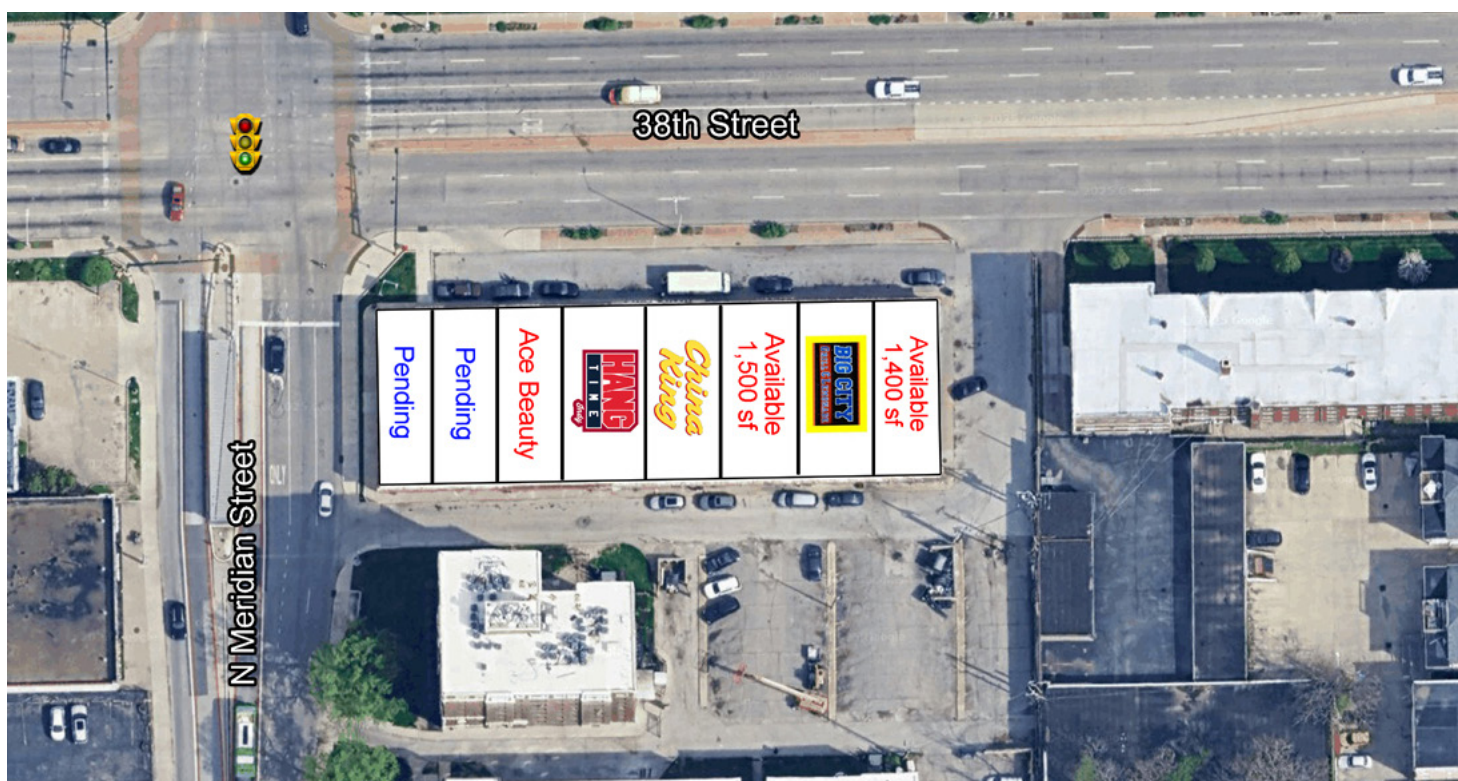
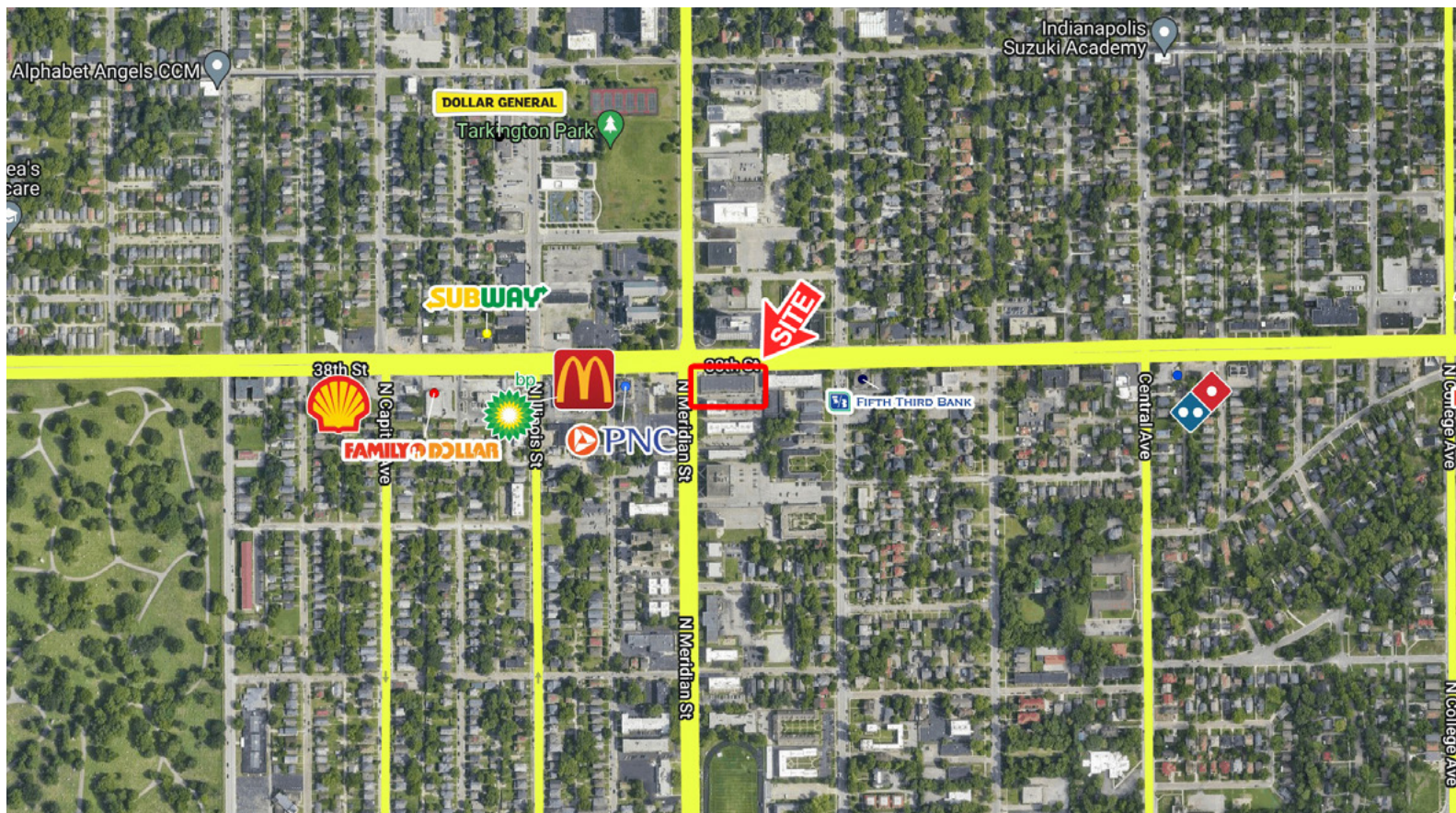
McCrea Property Group
for more details

MARKET DEMOGRAPHICS

Radius	Population	Income	Households	Daytime Pop
1 Mile	17,425	\$99,575	7,148	4,889
3 Mile	94,256	\$102,436	40,426	45,448
5 Mile	278,813	\$92,655	117,249	180,840

Meridian Plaza

3787 N Meridian Street, Indianapolis, IN 46205



McCrea Property Group, LLC | 9102 N Meridian Street | Suite 230 | Indianapolis | IN | 46260 | 317.663.8446

Information deemed reliable, but not guaranteed. Subject to change without notice