

3960 3rd Ave

San Diego, CA 92103

2,000 - 7,975 SF Medical Space with 14
Parking Spaces

For sale
or + **FRESH**
For Lease + **EXTERIOR**
UPGRADES

619-243-1244

www.stromcommercial.com

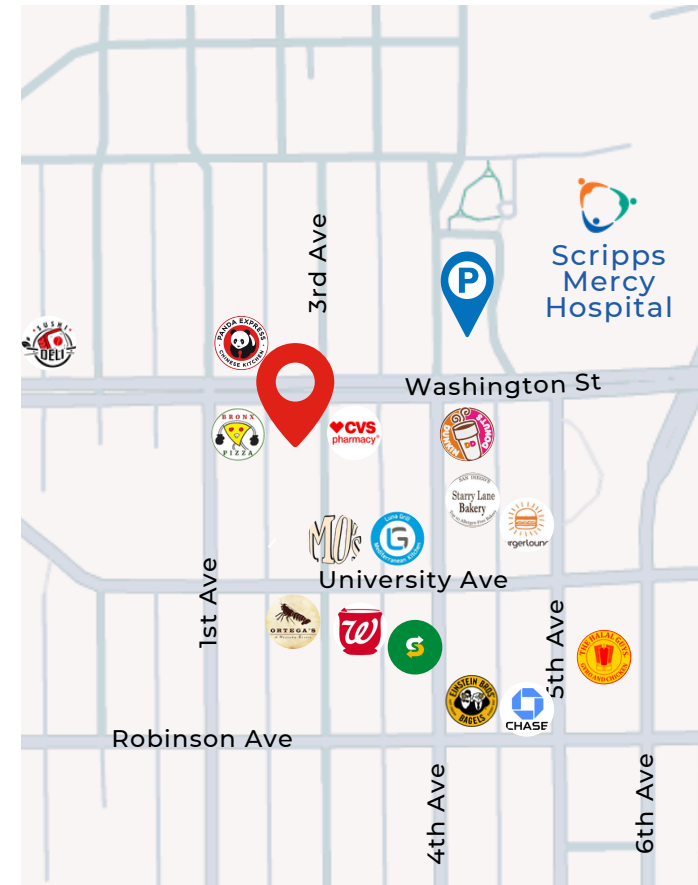
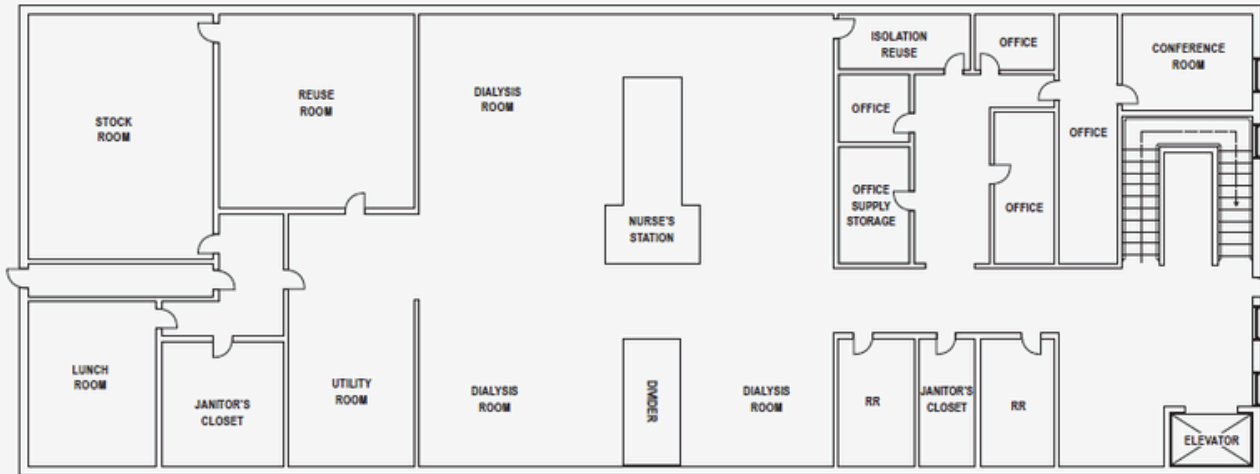


BUILDING HIGHLIGHTS

- 2,000 - 7,975 SF available for lease
- Rate: \$2.50 PSF + NNN
- Building is for Sale
- (\$0.50 NNN estimated)
- ±7,975 SF building
- Single-User Medical Opportunity
- Secure onsite parking with 14 spaces + multiple access points
- Signage available
- Elevator + stairwell served
- 1,200 Amps of Power
- 2 roll-up doors, 1 garage door, access from both 3rd Ave & Alley



SECURED 14 SPACE GARAGE



CONTACT

Jack Schreibman | LIC #02172891
jschreibman@stromcommercial.com

Hans Strom | LIC #02172891
Hans@stromcommercial.com