



# For lease

Building 1	Building 2
41,850 s.f.	24,780 s.f.

0 Jetway Boulevard  
Columbus, Ohio



# Property highlights



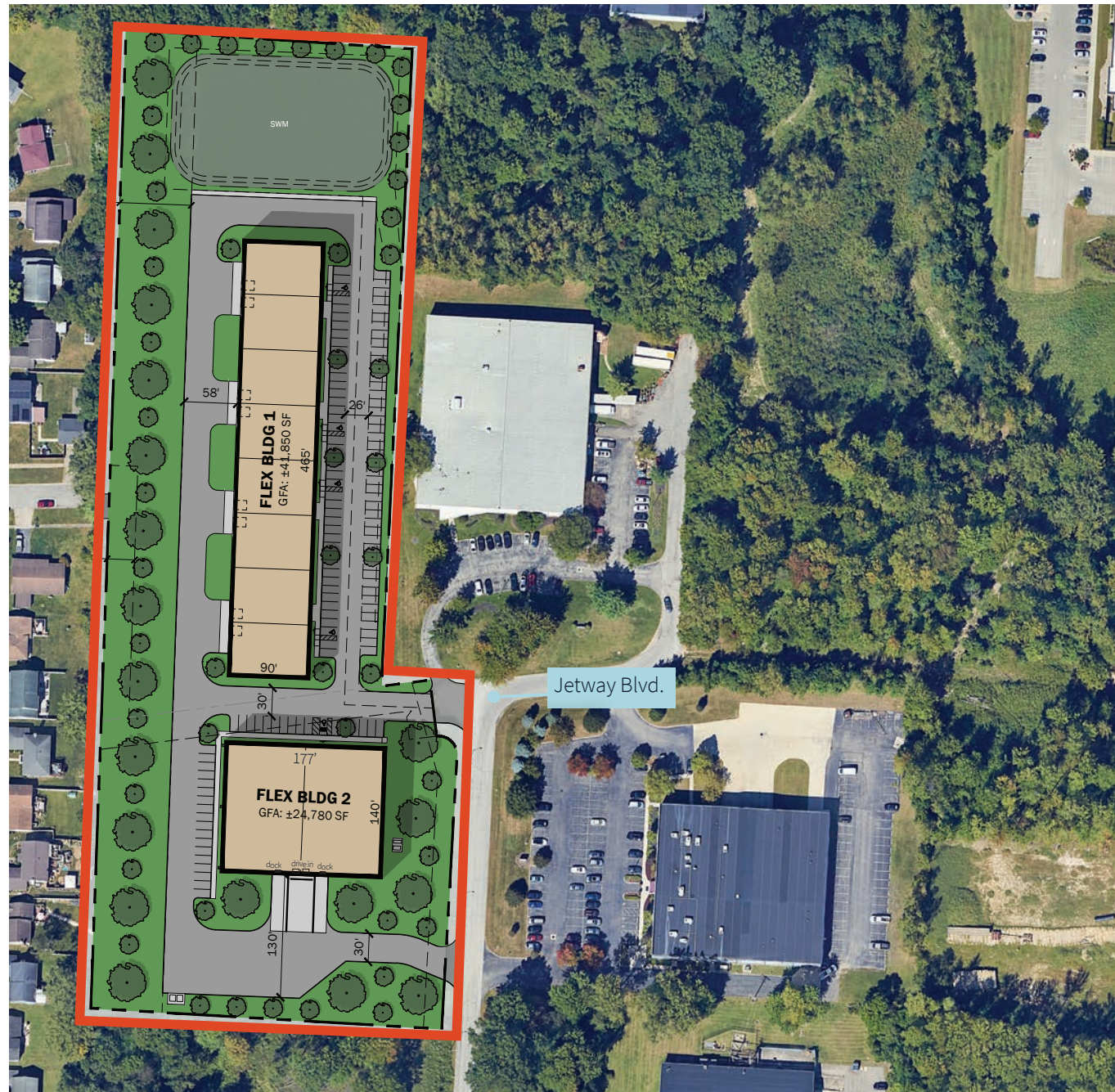
Targeted **75%** - 10 year tax abatement



New construction to be completed Q4 2025. Building 1 - **41,850 s.f.** and building 2- **24,780 s.f.** available.



Less than .05 miles to **John Glenn Columbus International Airport** and 1 mile to **I-670**

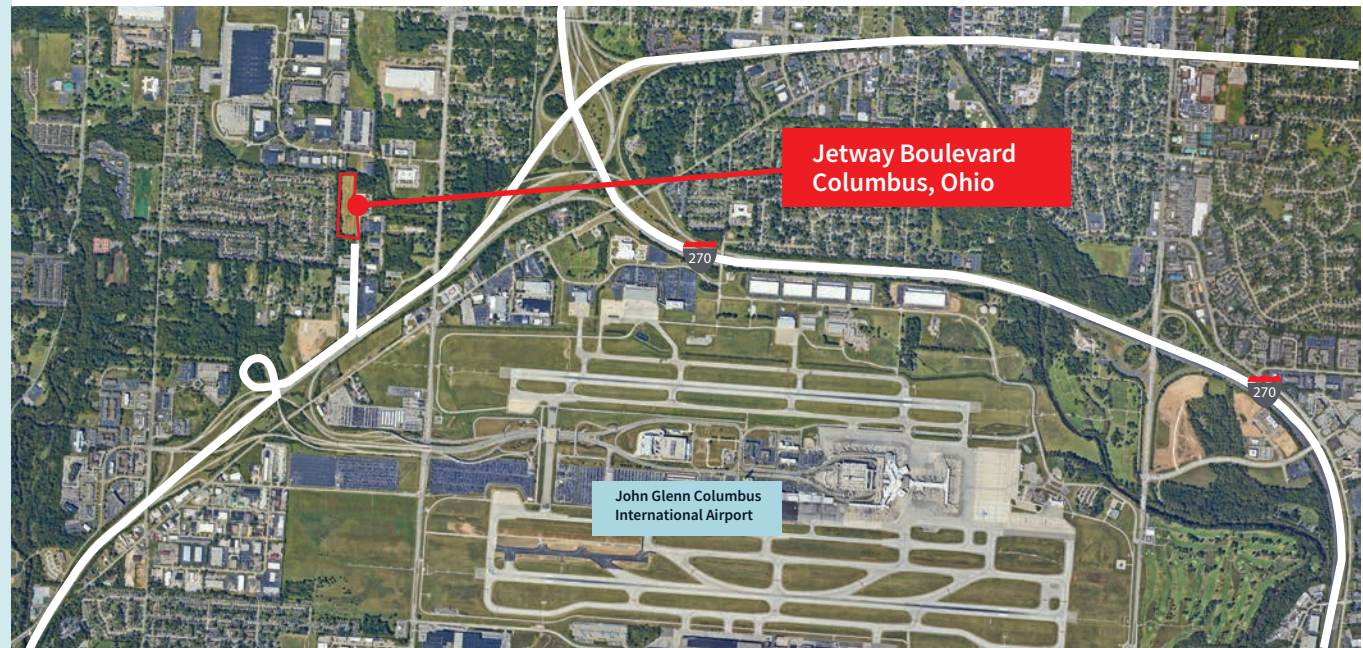
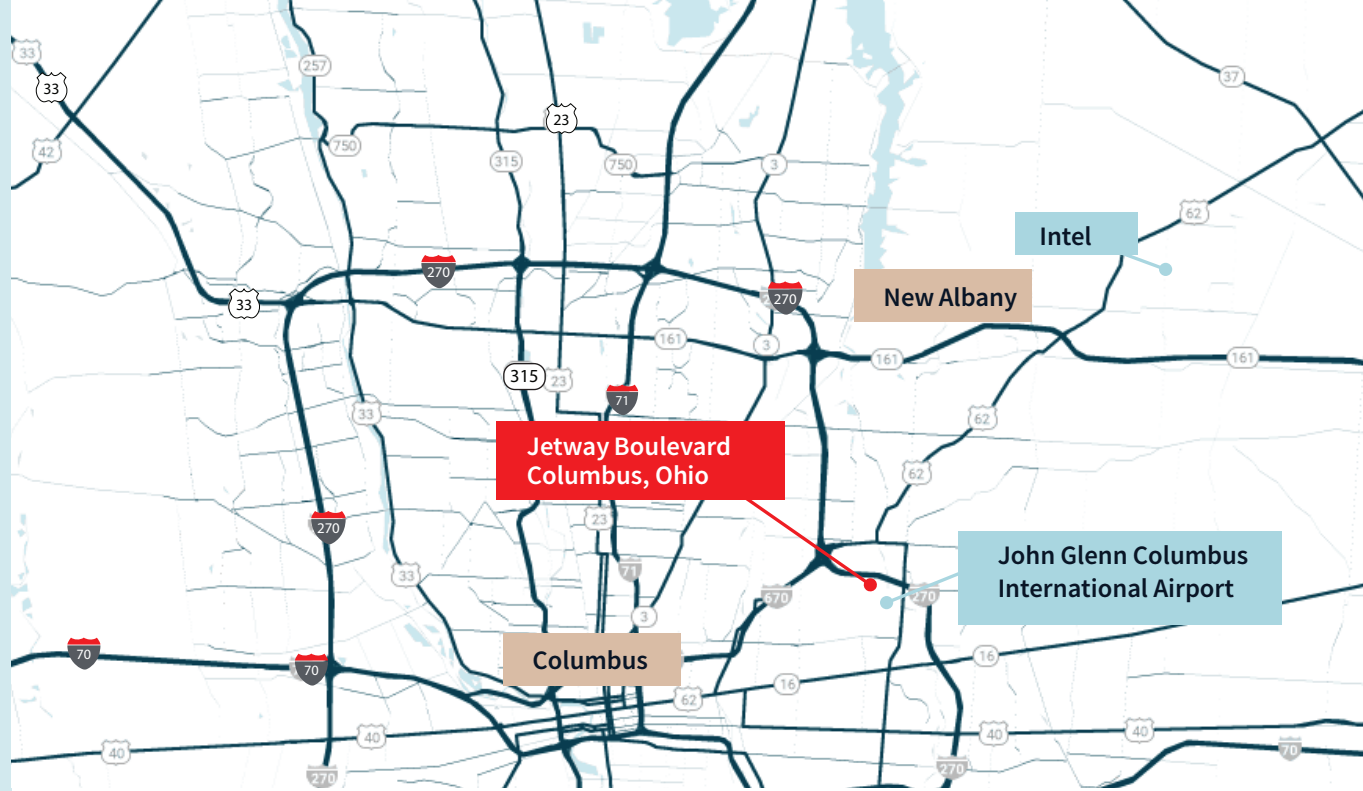




## Jetway Boulevard / Columbus

### Market access

- **I-670:** 1.0 mile
  - **I-270:** 1.5 miles
  - **US 62:** - 3.5 miles
  - **I-70:** 4 miles
  - **I-71:** 12 miles
- 
- Intel, New Albany, Ohio - 13 miles
  - John Glenn Columbus International Airport - 1.0 miles



# Specifications

## Building One

<b>Building s.f.</b>	41,850 s.f.
<b>Available s.f.</b>	5,000 - 41,850 s.f.
<b>Building Dimensions</b>	90' x 465'
<b>Drive-in Doors</b>	(8) 12' x 14'
<b>Electric</b>	1,600 amps
<b>Ceiling Height</b>	18'-20'
<b>Planned Completion</b>	Q4 2025

## Building Two

<b>Building s.f.</b>	24,780 s.f.
<b>Available s.f.</b>	12,000 - 24,780 s.f.
<b>Building Dimensions</b>	177' x 140'
<b>Drive-in Doors</b>	(2) 12' x 14'
<b>Dock Doors</b>	(2) insulated, manually operated dock doors, fully equipped with 25,000 lb mechanical pit levelers, seals and lights
<b>Electric</b>	1,200 amps 480/277
<b>Ceiling Height</b>	22-24'
<b>Fire Suppression</b>	ESFR
<b>Planned Completion</b>	Q4 2025



# Renderings



**JLL**

**Nick Tomasone**

[nick.tomasone@jll.com](mailto:nick.tomasone@jll.com)

+1 (614) 460 4482

**Joe Davis**

[joseph.davis@jll.com](mailto:joseph.davis@jll.com)

+1 (614) 460 4425

**Kilar Mariotti**

[kilar.mariotti@jll.com](mailto:kilar.mariotti@jll.com)

+1 (614) 460 4479

**Matthew Collins**

[matthew.collins@jll.com](mailto:matthew.collins@jll.com)

+1 (740) 815 7986