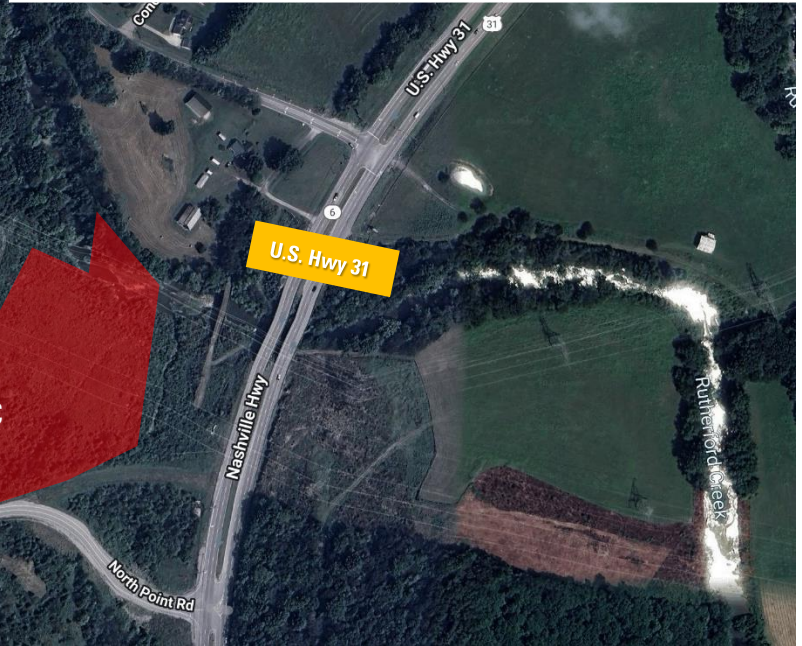
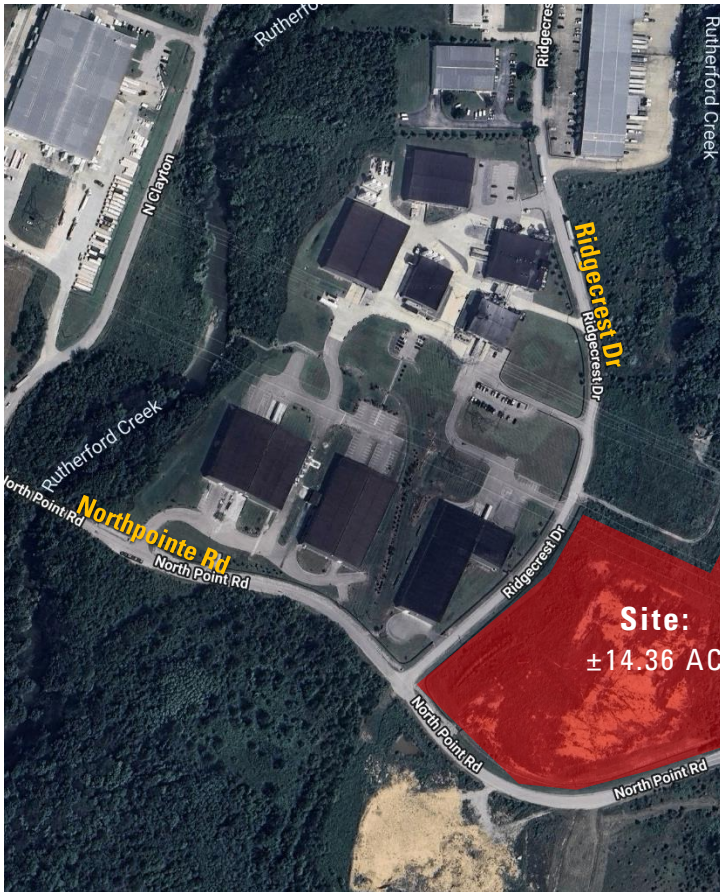


FOR SALE

±14.36 Acres Available

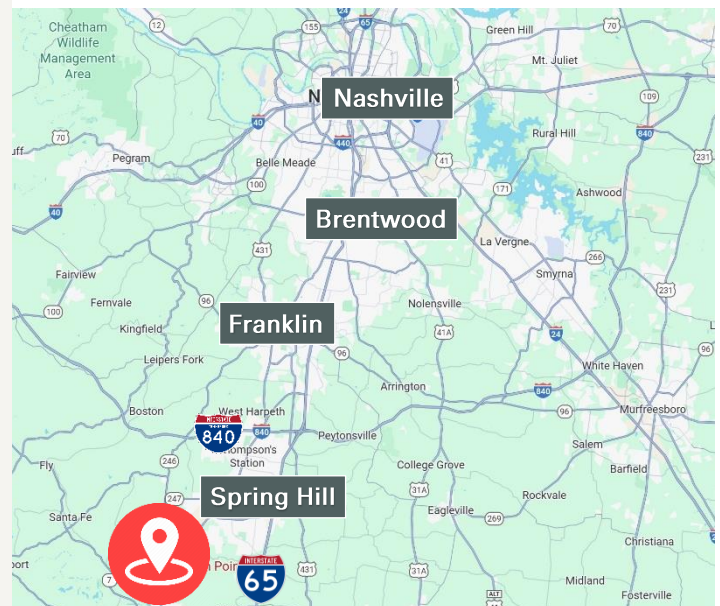
Industrial Land Available in the Northpointe Industrial Park in Columbia

Northpointe Road, Columbia, TN 38401



HIGHLIGHTS

- ±14.36 Acres Available
- Zoning: SD-LI / Special District – Light Industrial
- Located in Northpointe Industrial Park
- Site offers visibility from U.S. Hwy 31
- Immediate access to U.S. Hwy 31
- Minutes from downtown Columbia
- Asking Price: \$3,000,000



Jeff Thomas, CCIM
First Vice President
O: 615.345.7232
jthomas@charleshawkinsco.com

J.P. Lowe, CCIM
First Vice President
O: 615.345.7212
jplowe@charleshawkinsco.com

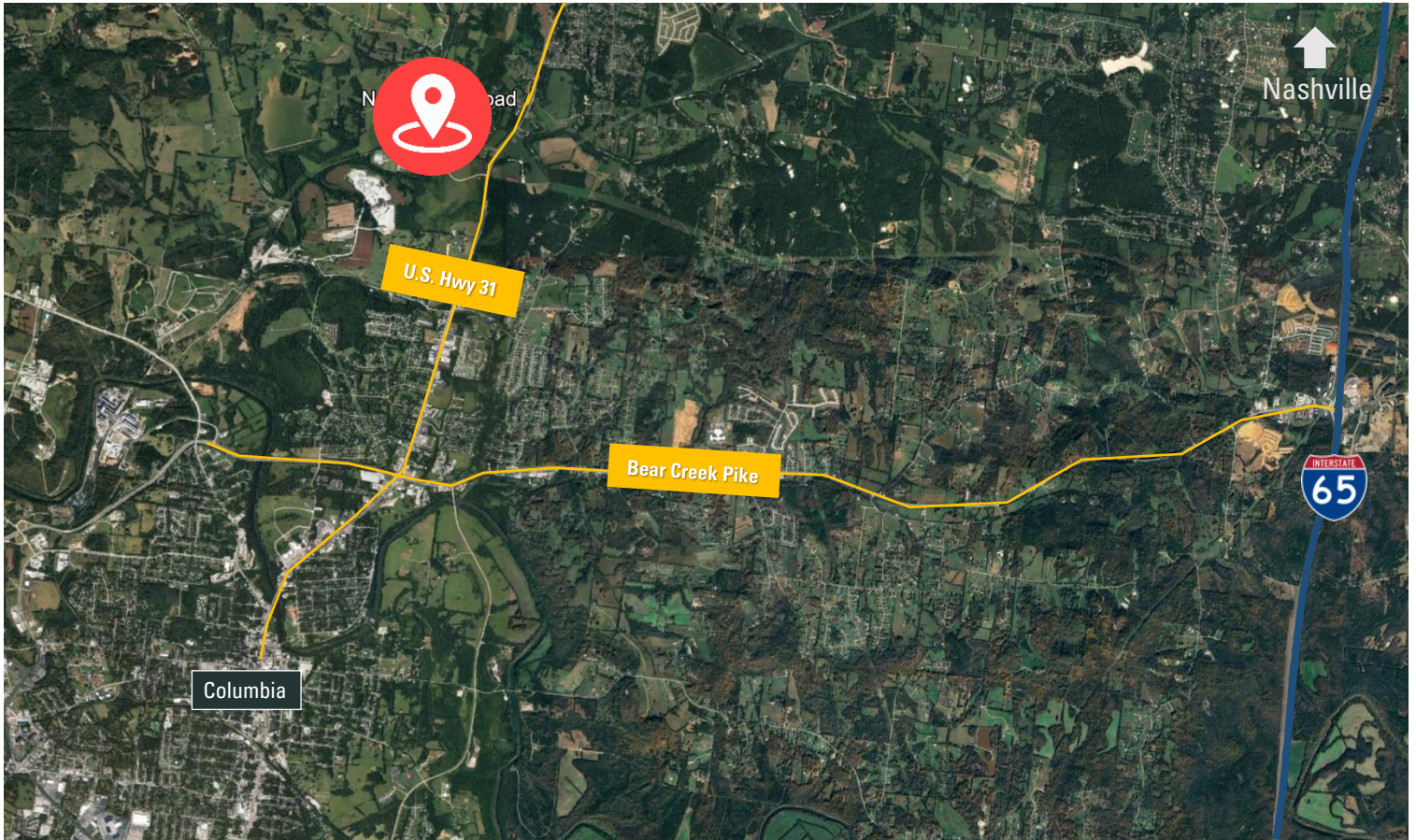
Exclusively listed by:
Charles Hawkins Co.
2920 Berry Hill Dr., Ste 100
Nashville, TN 37204
T: 615.256.3189

For Sale
±14.36 Acres

Northpointe Road
Columbia, TN 38401
Maury County

CHARLES
HAWKINS CO.

AERIALS



Jeff Thomas, CCIM
First Vice President
O: 615.345.7232
jthomas@charleshawkinsco.com

J.P. Lowe, CCIM
First Vice President
O: 615.345.7212
jplowe@charleshawkinsco.com

Exclusively listed by:
Charles Hawkins Co.
2920 Berry Hill Dr., Ste 100
Nashville, TN 37204
T: 615.256.3189