

Office Space | For Lease

3812 N Santa Fe Ave | Oklahoma City, OK 73118

WIGGIN PROPERTIES, LLC



Property Features

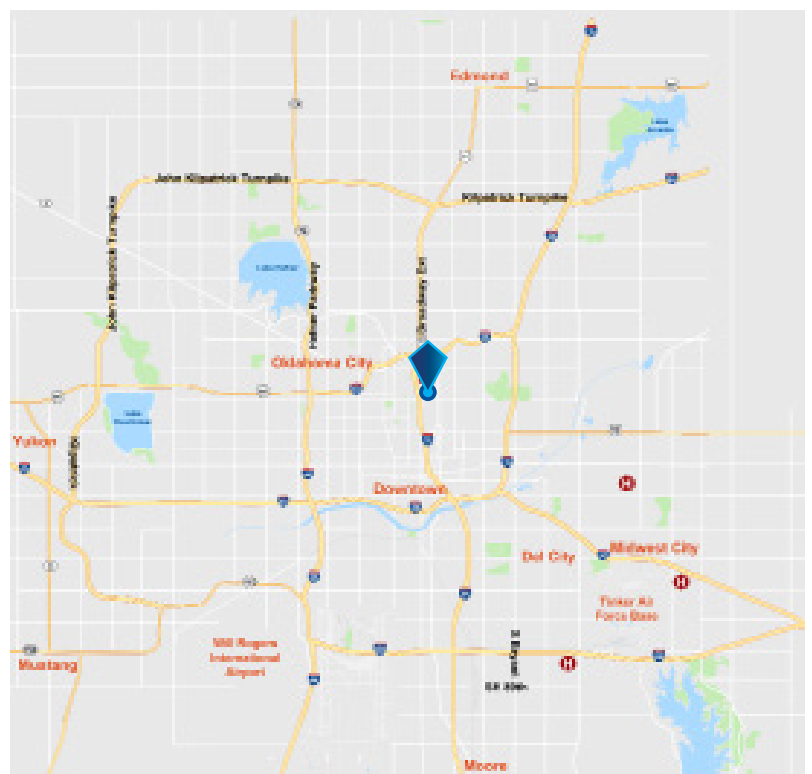
- \$1MM+ Renovation Completed July 2025
- Building Signage Opportunities Available
- Ample Parking, Covered Parking Available
- Close proximity to State Capitol, OU Health and I-235
- Ability to utilize current layout or redesign
- Downtown skyline views
- Less than 10 minute drive from amenities, restaurants, Classen Curve, and more

Available Space

2nd Floor: 13,873 sf | 3rd Floor: 11,170 sf

Pricing

\$18/sf FS



Ian Sioux

Advisor

405.659.6782

iansioux@wigginprop.com

Nick Bentley

Advisor

405.408.5428

nbentley@wigginprop.com

Year	1 Mile	3 Miles	5 Miles
Population	6,649	74,220	163,704
Avg HH Income	\$112,477	\$103,638	\$98,857
Households	3,501	34,838	72,596

This material is provided for information purposes only. It is from sources believed to be reliable. However, Wiggin Properties makes no warranties or representations, expressed or implied, as to the accuracy or sufficiency of the information. It is presented subject to errors, omissions, changes or withdrawal without notice. Square footage is provided by the local County Assessor or the Owner. Photos and graphics with copyrights by Costar, Google, Wiggin Properties and independent contractors are used with permission.

Office Space | For Lease

3812 N Santa Fe Ave | Oklahoma City, OK 73118

WIGGIN PROPERTIES, LLC



Ian Sioux

Advisor

405.659.6782

iansioux@wigginprop.com

Nick Bentley

Advisor

405.408.5428

nbentley@wigginprop.com

This material is provided for information purposes only. It is from sources believed to be reliable. However, Wiggin Properties makes no warranties or representations, expressed or implied, as to the accuracy or sufficiency of the information. It is presented subject to errors, omissions, changes or withdrawal without notice. Square footage is provided by the local County Assessor or the Owner. Photos and graphics with copyrights by Costar, Google, Wiggin Properties and independent contractors are used with permission.

Office Space | For Lease

3812 N Santa Fe Ave | Oklahoma City, OK 73118

WIGGIN
PROPERTIES, LLC



N Aerial View



NW Aerial View

Ian Sioux

Advisor

405.659.6782

iansioux@wiginprop.com

Nick Bentley

Advisor

405.408.5428

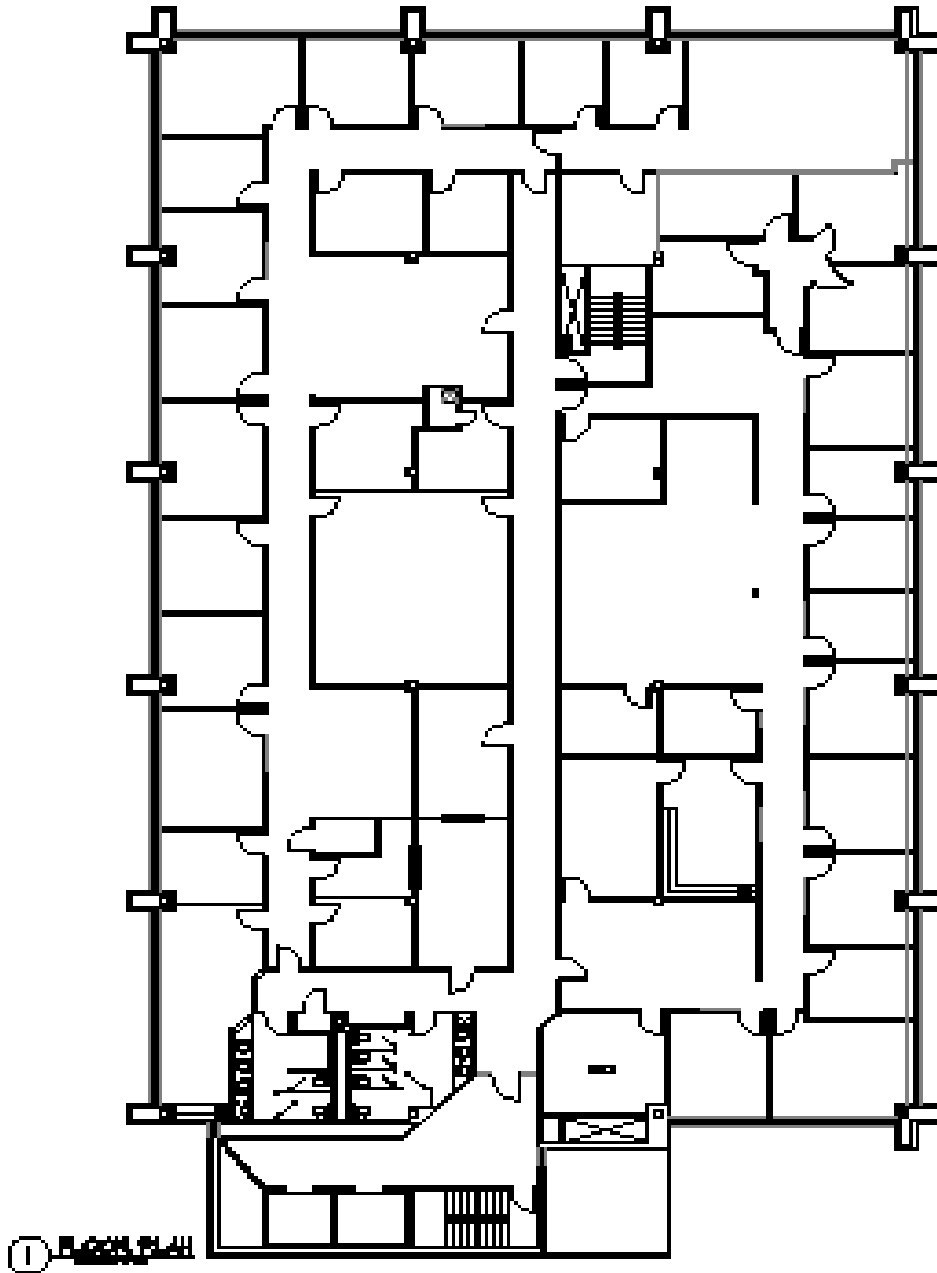
nbentley@wiginprop.com

Office Space | For Lease

3812 N Santa Fe Ave | Oklahoma City, OK 73118

WIGGIN
PROPERTIES, LLC

2nd Floor



Ian Sioux

Advisor

405.659.6782

iansioux@wigginprop.com

Nick Bentley

Advisor

405.408.5428

nbentley@wigginprop.com

Office Space | For Lease

3812 N Santa Fe Ave | Oklahoma City, OK 73118

WIGGIN
PROPERTIES, LLC

3rd Floor



Ian Sioux

Advisor

405.659.6782

iansioux@wiggprop.com

Nick Bentley

Advisor

405.408.5428

nbentley@wiggprop.com