

## Amazing opportunity to locate your business in the heart of Keego Harbor!

### Details

- Located in prime, highly desirable Oakland County, Michigan with great area demographics
- Vacant lot available-built to suit with drive-thru option available
- Great location for national tenants with dedicated entrance & building signage
- Convenient storefront parking
- Fiber internet connection available
- Nicely finished space with open layout
- Traffic Count: 17,222 Vehicles/day (Costar, 2018)
- Ideal location for: professional office (architectural firm, contractor /construction company, interior design firm), Domino's Pizza, 7-11, restaurants, UPS Store, medical/dental office, physical therapy, nail salon, health & wellness spa, bank/credit union, retail, take-out food service concepts.
- 800 SF space available
- Drive-thru option available
- Within minutes from Cass Lake, Sylvan Lake, Orchard Lake and Elizabeth Lake

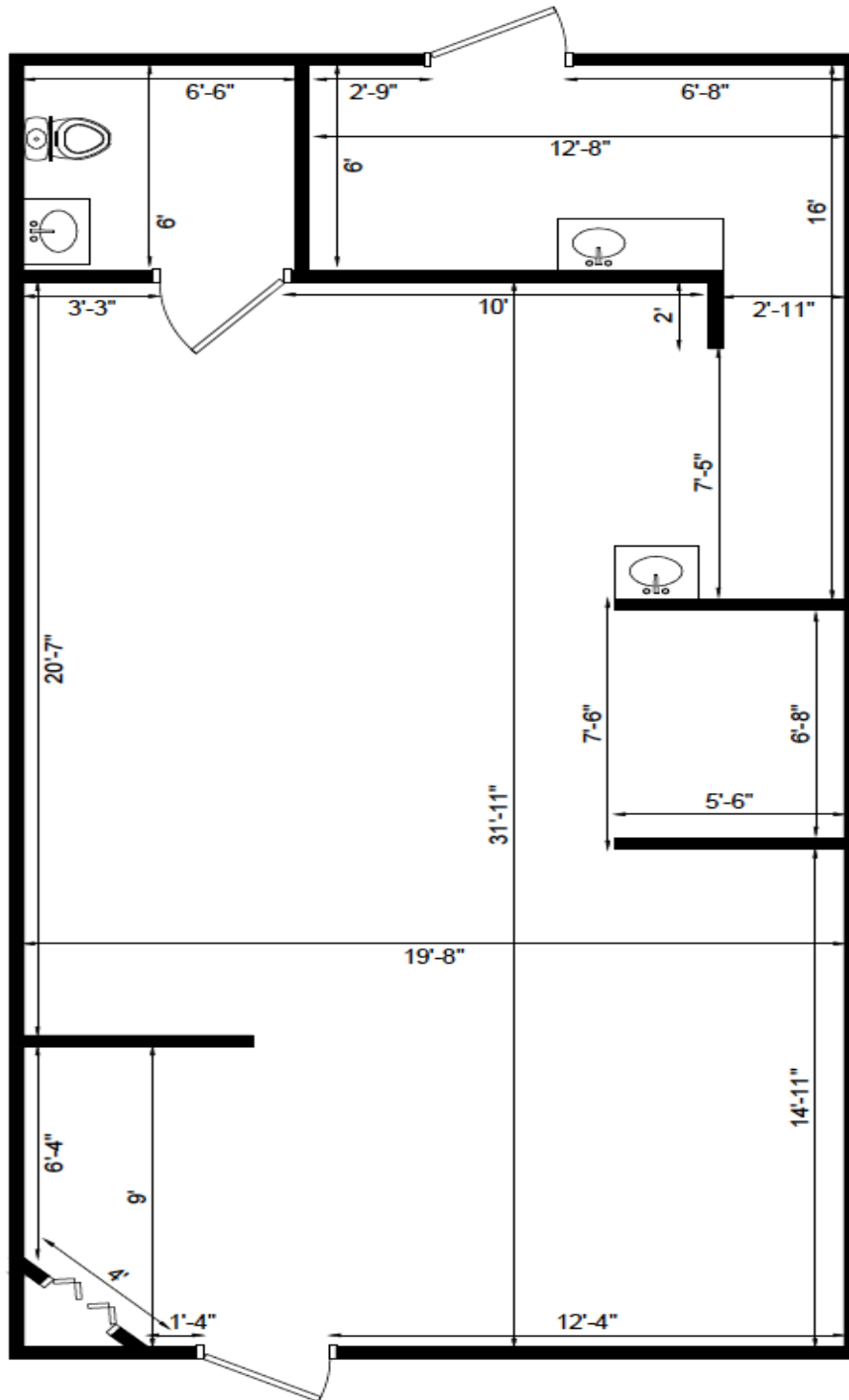
### Demographics

- Population: 170,178 | Households: 66,796 | Employees: 68,109
  - Average household income: \$103,544/ annually



# Lakewood Plaza

2038 Cass Lake Road  
 Keego Harbor, Michigan 48320



# Lakewood Plaza

2038 Cass Lake Road

Keego Harbor, Michigan 48320



**NEW DEVELOPMENT**  
The Residences  
At Cass Lake



Gibbs Planning Group is currently leading a six-month master planning process to explore the transformation of Cass Lake Road into a traditional walkable village.