

Airport Atrium

2780 Skypark Drive Torrance, CA

Medical Suites For Lease



**MEDICAL ASSET
MANAGEMENT**
MEDICAL PROPERTY SPECIALISTS



ERIK VAN'T HOF
Medical Asset Management
(310)517-4877
Erikv@medicalasset.com
DRE #: 01055014

MITCH YANKOWITZ
Medical Asset Management
(310)517-4861
Mitchy@medicalasset.com
DRE #: 01360137

Property Highlights

Less than 1 mile from Torrance Memorial Hospital

Magnificent garden style atrium lobby with palm trees and a 3-story water feature

Ample surface lot offering generous free parking at a 4:1,000 ratio-ideal for medical practitioners and their patients

Private balconies & expansive views of Palos Verdes, Rolling Hills and Zamperini Field runway

Professionally managed with on-site day porter

The city of Torrance has no business gross receipt tax



Gallery

Front Entrance



Atrium Lobby



Parking Lot Entrance



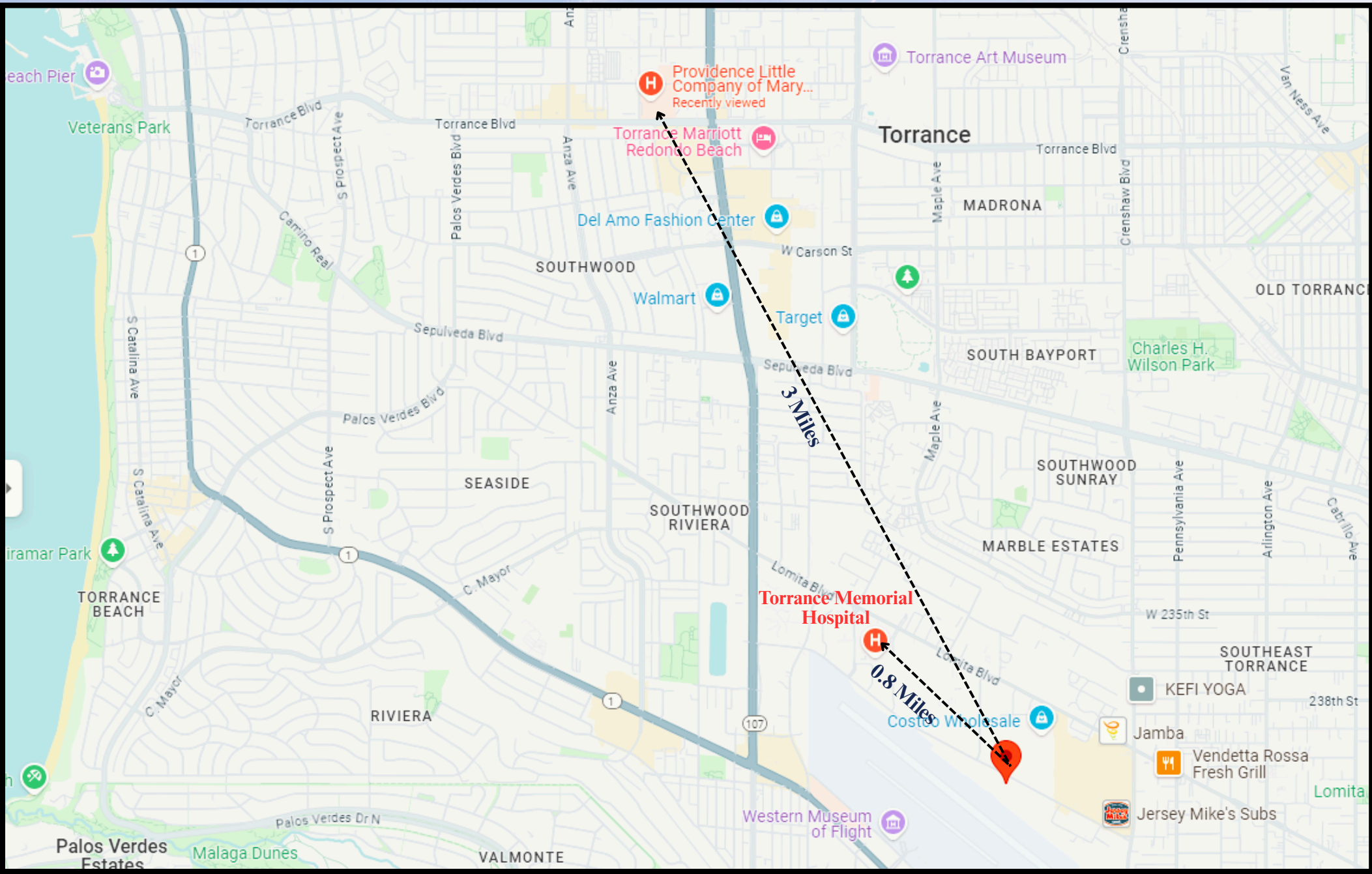
Atrium Entrance



Location Highlights

Less than 1 mile from Torrance Memorial Hospital

3 miles from Providence Little Company of Mary Medical Center



2nd Floor Plan

AVAILABILITY:

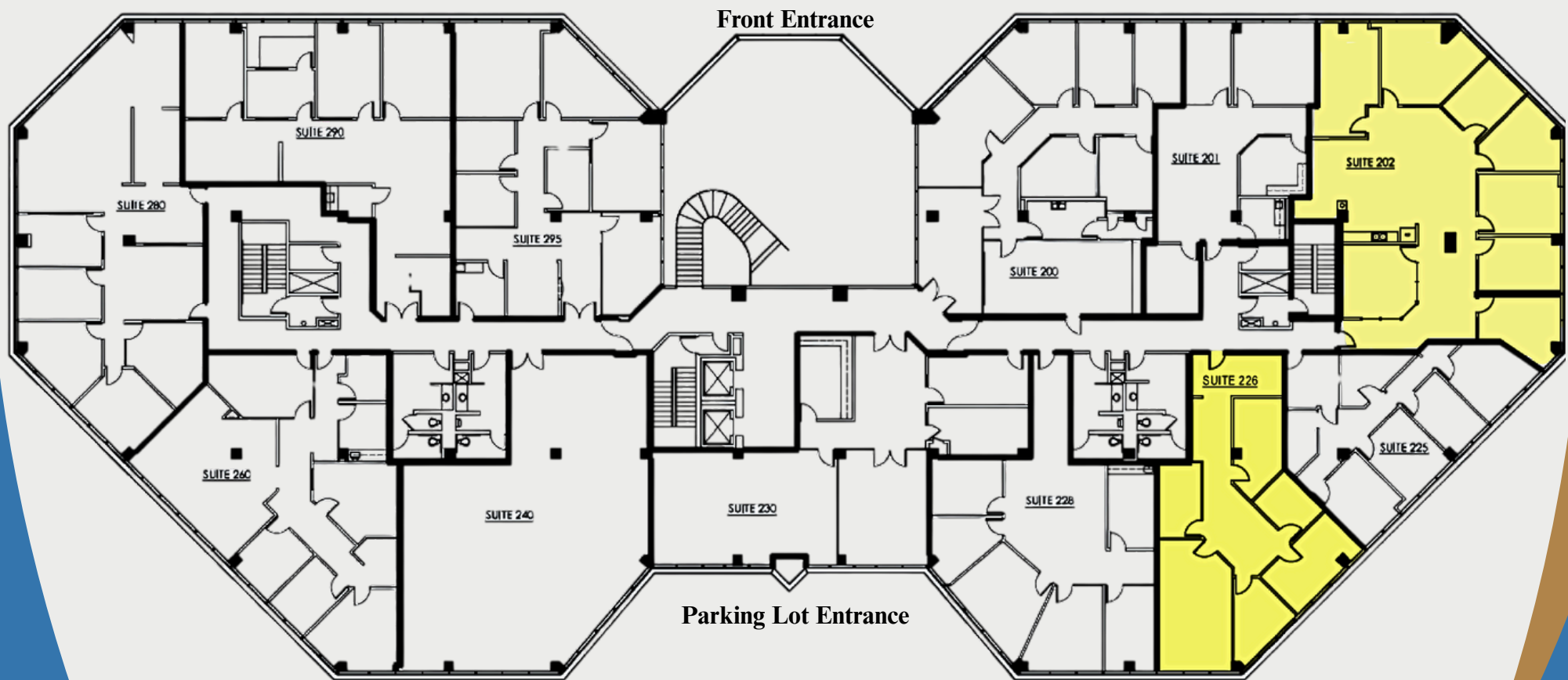
SUITE 202 **3,111 RSF**

SUITE 226 **1,839 RSF**

MEDICAL RENTAL RATE:

\$4.25 FSG Net Janitorial

\$4.25 FSG Net Janitorial



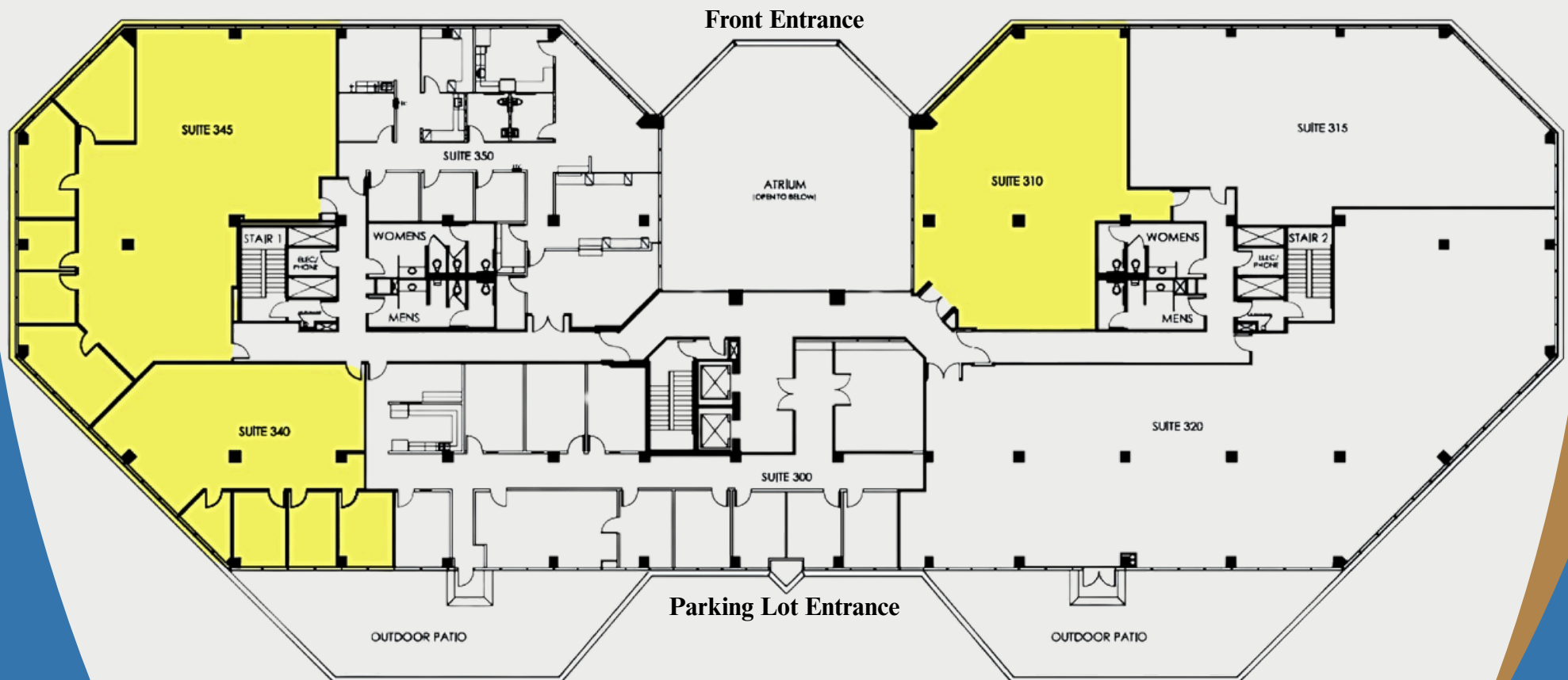
3rd Floor Plan

AVAILABILITY:

SUITE 310	2,440 RSF
*SUITE 340	2,022 RSF
*SUITE 345	3,952 RSF
*Contiguous	6,092 RSF

MEDICAL RENTAL RATE:

\$4.25 FSG Net Janitorial
\$4.25 FSG Net Janitorial
\$4.25 FSG Net Janitorial

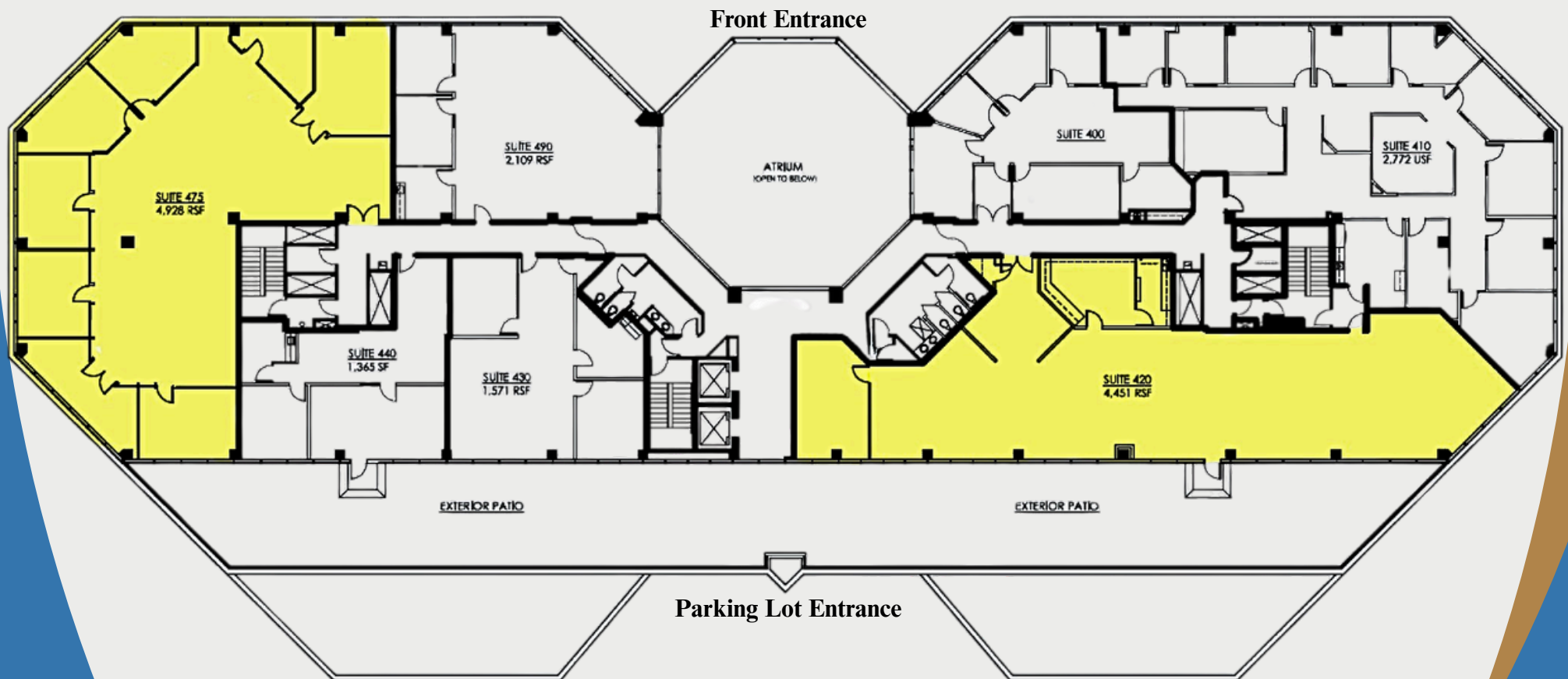


4th Floor Plan

AVAILABILITY:

MEDICAL RENTAL RATE:

*SUITE 420	4,451 RSF	\$4.40 FSG Net Janitorial
SUITE 475	4,928 RSF	\$4.25 FSG Net Janitorial
*Large Patio with Airport Views		



Airport Atrium

2780 Skypark Drive Torrance, CA

Medical Suites For Lease



**MEDICAL ASSET
MANAGEMENT**
MEDICAL PROPERTY SPECIALISTS



For more information, please contact:

ERIK VAN'T HOF
Medical Asset Management
(310)517-4877
Erikv@medicalasset.com
DRE #: 01055014

MITCH YANKOWITZ
Medical Asset Management
(310)517-4861
Mitchy@medicalasset.com
DRE #: 01360137

*The information contained herein is deemed reliable, but cannot be guaranteed by Medical Asset Management and is subject to change.