

# PLUG AND PLAY SUITES AVAILABLE FOR IMMEDIATE MOVE IN



Plug and Play



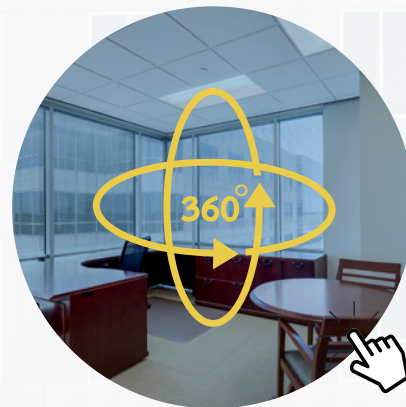
Flexible Terms



100% commission  
upon lease execution

## Availability

Click on any suite's 360  
Tour icon to take a virtual  
Matterport tour. More  
information available on  
next page.



**BWL I: SUITE 540**  
7,402 SF



**BWL I: SUITE 600**  
27,770 SF



**BWL II: SUITE 400**  
28,520 SF

Learn more at [www.beltwaylakes.com](http://www.beltwaylakes.com)

BWL I: Suite 540

# FLOOR 05

7,402 RSF

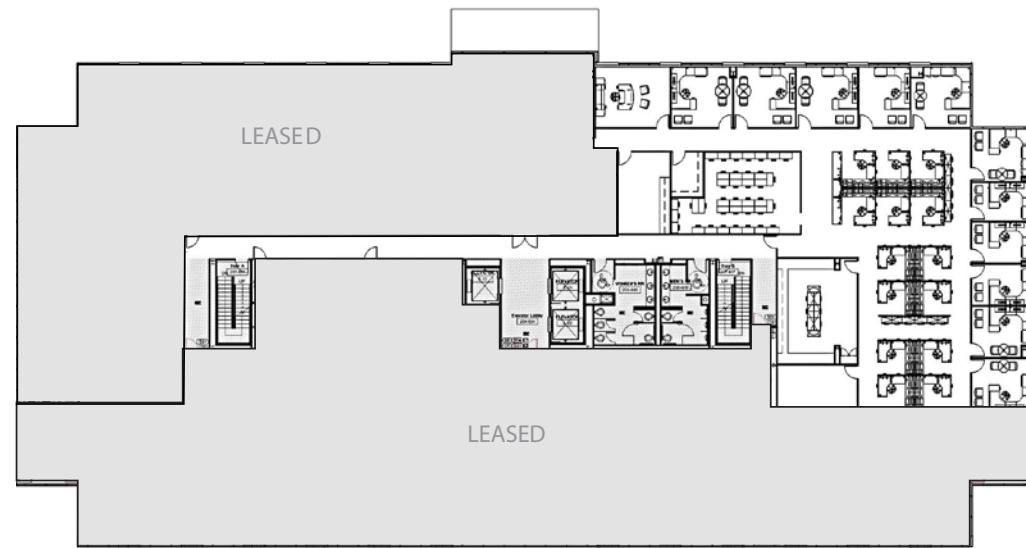
## Suite 540 - 7,402 SF

12 private offices | 14 workstations  
1 large training room | 1 work room

### Features

- Plug-n-play
- Training room

TAKE VIRTUAL TOUR 



BWL II

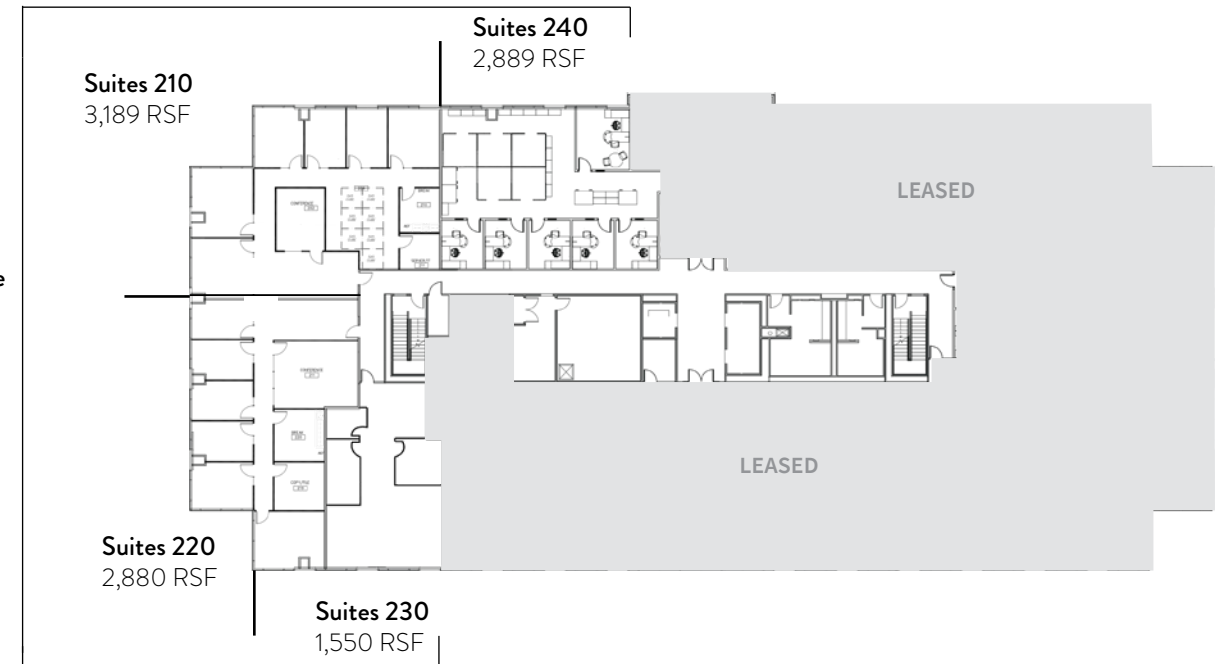
# FLOOR 02

10,517 RSF

## Suites 210 - 240

Plug and Play Suites available | From 1,550 - 10,517 SF

Total Available Combined  
10,517 RSF



BWL I: Suite 600

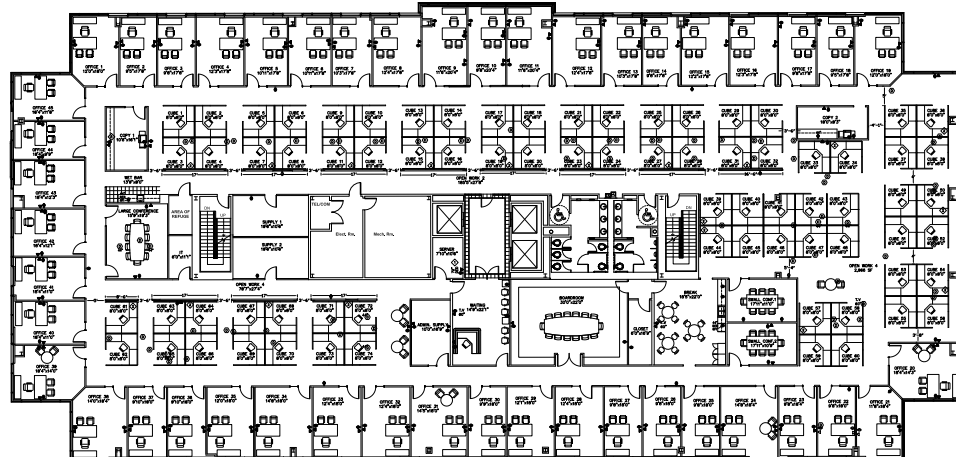
# FLOOR 06

27,770 RSF

## Suite 600 - 27,770 SF

45 private offices | 74 workstations  
1 boardroom (14+) | 1 large conference room (10)  
2 small conference rooms (8)

TAKE VIRTUAL TOUR 



BWL II: Suite 400

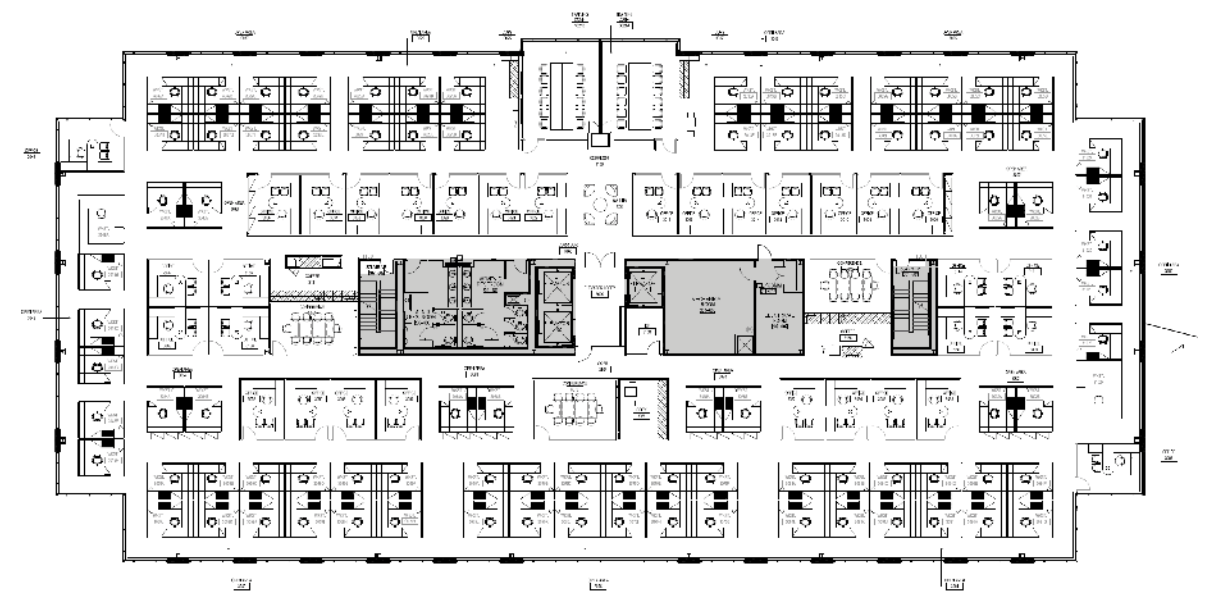
# FLOOR 04

28,520 RSF

## Suite 400 - 28,250 SF

32 private offices | 88 workstations  
2 training room (12) | 3 small conference rooms (10)

TAKE VIRTUAL TOUR 





For more information, contact:

**Jack Russo**

+1 713 425 1808

jack.russo@am.jll.com

**Christian Canion**

+1 713 888 4090

christian.canion@am.jll.com

# BELTWAY LAKES

*Setting a standard.*

Learn more at [www.beltwaylakes.com](http://www.beltwaylakes.com)



**RADLER  
ENTERPRISES,  
INC.**