

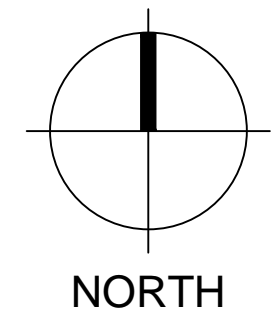
2504 VMP TENANT FINISH

2504 Veterans Memorial Parkway South


Lafayette, Indiana 47909



VICINITY MAP



HOLEY MOLEY SAYS
"DIG SAFELY"



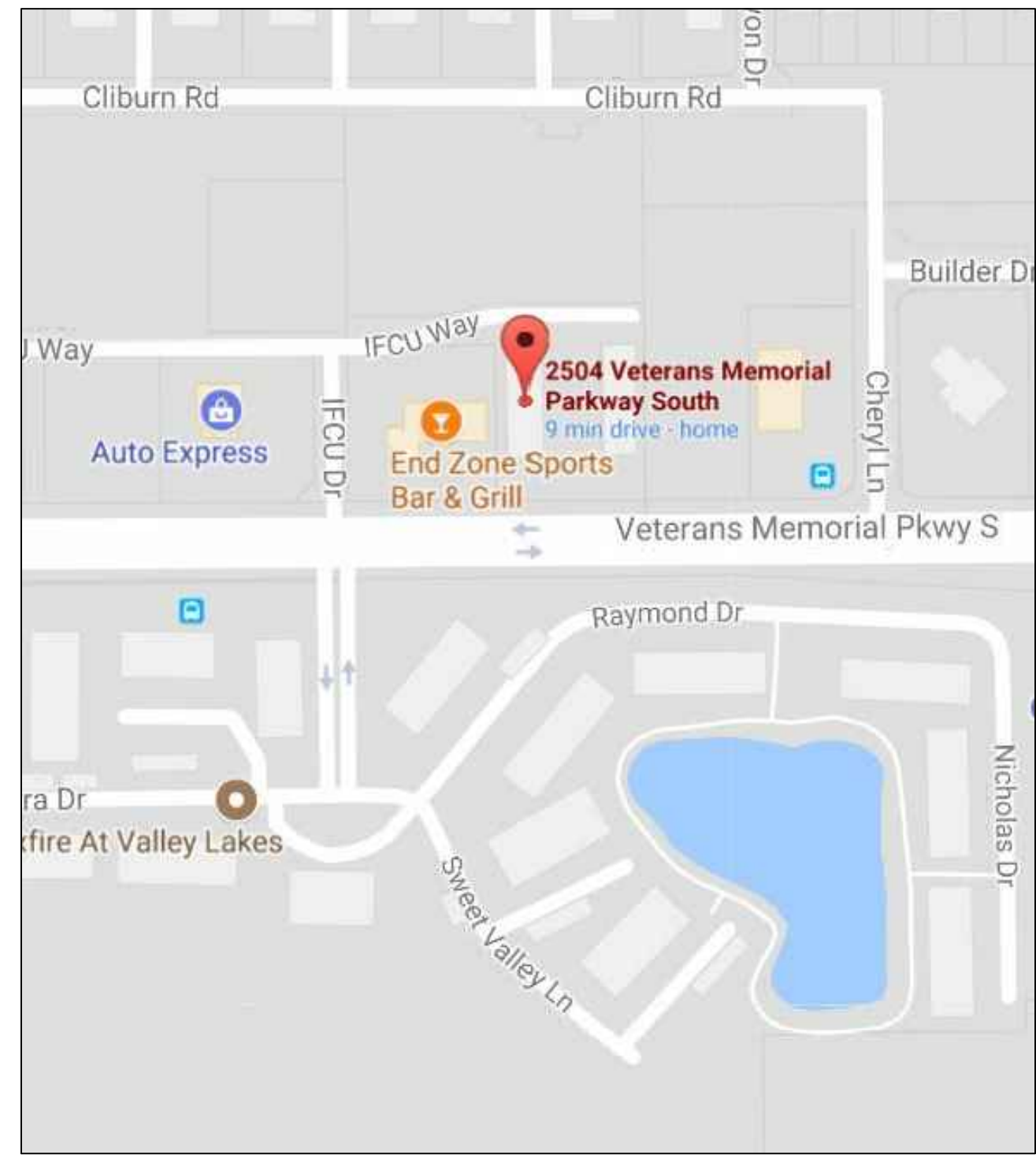
"IT'S THE LAW"
CALL 2 WORKING DAYS BEFORE YOU DIG
811 or 1-800-382-5544
CALL TOLL FREE
PER INDIANA STATE LAW IC8-1-26,
IT IS AGAINST THE LAW TO EXCAVATE
WITHOUT NOTIFYING THE UNDERGROUND
LOCATION SERVICE TWO (2) WORKING
DAYS BEFORE COMMENCING WORK.
www.indiana811.org

COLOR CODE

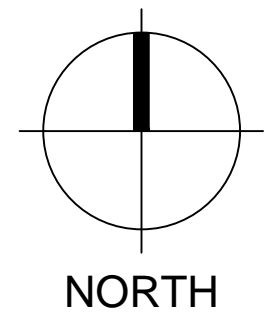
Red *ELECTRIC*
Yellow *GAS-OIL-STEAM*
Orange *TELEPHONE-CATV*
Blue *WATER*
Green *SEWER*
White *PROPOSED CONSTRUCTION*
Purple *RECLAIMED WATER*
Pink *TEMPORARY SURVEY MARKINGS*

HAND DIGGING IS REQUIRED
WITHIN TWO FEET OF ALL
MARKED UTILITY LOCATIONS

Information Required
COUNTY, TOWNSHIP, STREET
ADDRESS, TYPE OF WORK,
EXTENT OF WORK, NAME OF
CALLER, TITLE, TELEPHONE
NUMBER, BEST TIME TO CALL,
START DATE, START TIME,
CONTRACTOR NAME & ADDRESS

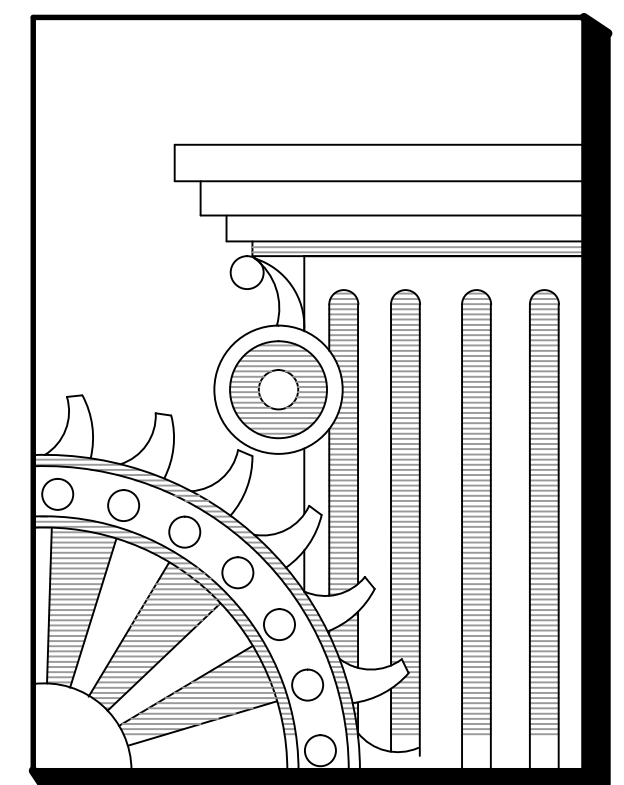


LOCATION MAP

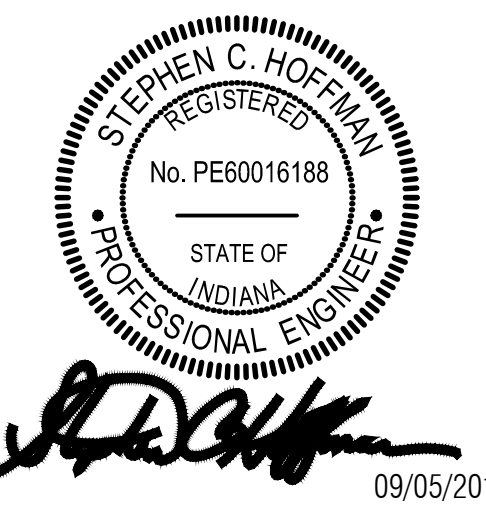


THIS PROJECT IS DESIGNED ACCORDING TO

- 675 IAC 13-1 FIRE & BUILDING SAFETY STANDARDS
- 675 IAC 13-2.6 INDIANA BUILDING CODE, 2014 EDITION (IBC, 2012 EDITION, 1ST PRINTING) ANSI A117.1-2009 EFFECTIVE 12/1/14
- 675 IAC 16-1.4 INDIANA PLUMBING CODE, 2012 EDITION EFFECTIVE 12/24/12
- 675 IAC 17-1.8 INDIANA ELECTRICAL CODE 2009 EDITION (NFPA 70-2008) EFFECTIVE 8/26/09
- 675 IAC 18-1.6 INDIANA MECHANICAL CODE, 2014 EDITION (IMC, 2012 EDITION, 1ST PRINTING) EFFECTIVE 12/1/14
- 675 IAC 19-4 ED INDIANA ENERGY CONSERVATION CODE 2010 (ASHRAE 90.1, 2007 EDITION, AS AMENDED) EFFECTIVE 5/6/10
- 675 IAC 22-2.5 INDIANA FIRE CODE, 2014 EDITION (IFC 2012 EDITION, 1ST PRINTING) EFFECTIVE 12/1/14
- 675 IAC 25-3 INDIANA FUEL GAS CODE, 2014 EDITION (IFGC, 2012 EDITION, 2ND PRINTING) EFFECTIVE 12/1/14
- 675 IAC 28-1.2 NFPA# 10-2010 PORTABLE FIRE EXTINGUISHERS EFFECTIVE 12/15/12
- 675 IAC 28-1.5 NFPA# 13-2010 INSTALLATION OF SPRINKLER SYSTEMS EFFECTIVE 9/26/12
- 675 IAC 28-1.28 NFPA# 72-2010 NATIONAL FIRE ALARM CODE EFFECTIVE 3/23/14
- 675 IAC 21-3 ELEVATOR SAFETY CODE ANSI/ASME A17.1, 2004, AS AMENDED, ANSI/ASME A17.1, 2007, AS AMENDED EFFECTIVE 4/13/11



ENGINEERING SERVICES BY:
HOFFMAN ENGINEERS P.C.
8261 BASELINE ROAD
PARAGON, INDIANA 46166
765-537-2991 ~ FAX 765-537-2992
steve@hoffmanengineers.com
www.hoffmanengineers.com
"GLOBAL COMMITMENT WITH A MAIN STREET ATTITUDE"



INDEX OF DRAWINGS

- T1 TITLE SHEET / MAPS / INDEX
- C1 ARCHITECTURAL SITE PLAN
- A1 LIFE SAFETY PLAN & CODE
- A2 ADA STANDARDS
- A3 FLOOR PLAN
- A4 SECTIONS & DETAILS
- P1 PLUMBING PLAN
- M1 MECHANICAL PLAN
- E1 ELECTRICAL POWER PLAN
- E2 ELECTRICAL LIGHTING PLAN

AMENDED FINAL PLAT
SYCAMORE PROF VILLAGE PD

SCALE: 1"=30'

0 15 30

Parcel Numbers: A-9 79-11-08-279-009.009-032
A-10 79-11-08-279-010.008-032
A-11 79-11-08-279-011.006-032
A-12 79-11-08-279-012.006-032
A-13 79-11-08-279-013.009-032
A-14 79-11-08-279-014.006-032
A-15 79-11-08-279-015.009-032
A-16 79-11-08-279-016.009-032



SCALE: 1"=20'-0"



PROFESSIONAL ENGINEER

09/05/2017

STEPHEN C. HOFFMAN

REGISTERED

No. PE60016188

STATE OF INDIANA

PROFESSIONAL ENGINEER

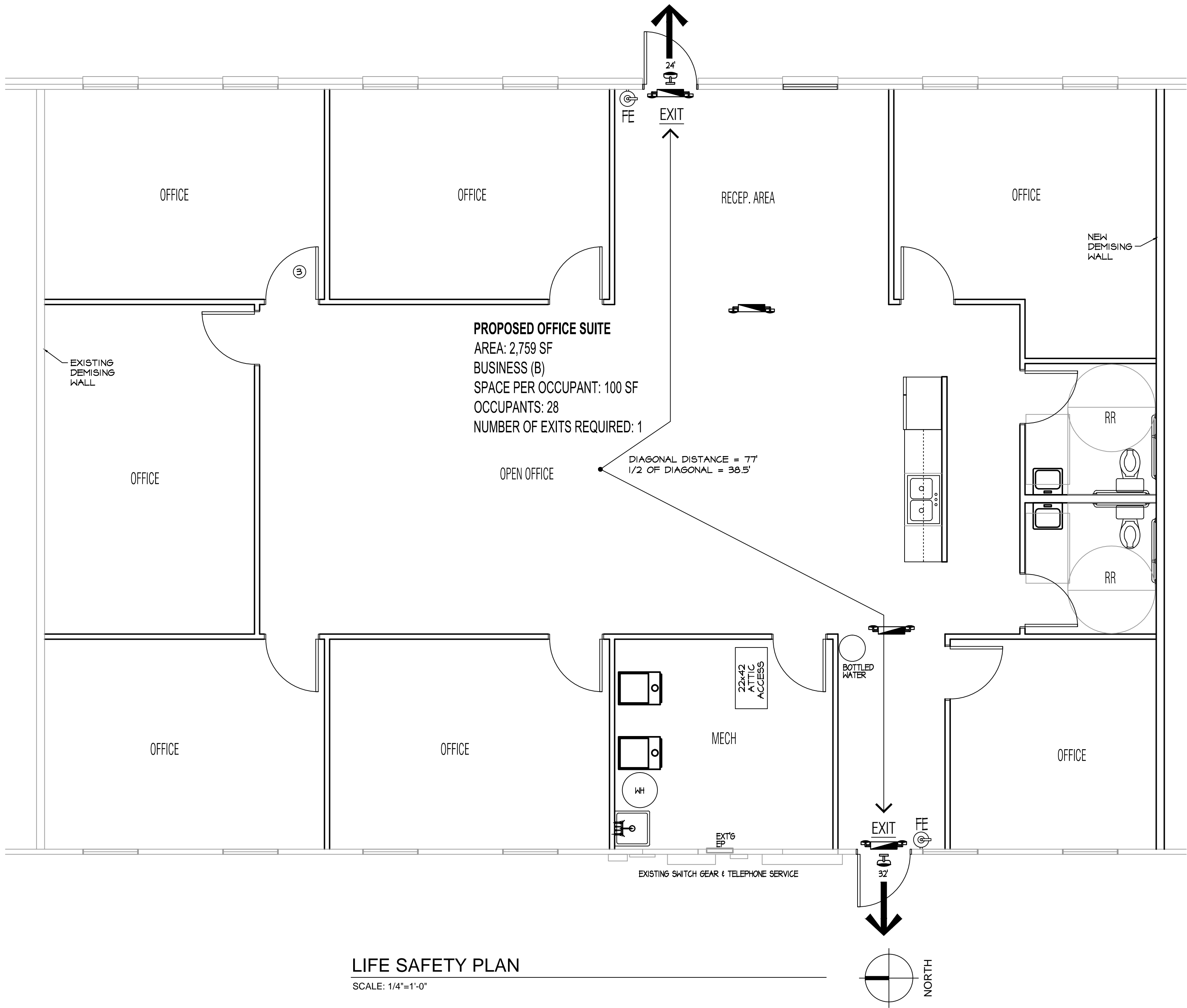
Stephen C. Hoffman

Stephen C. Hoffman - Engineer

IN # PE60016188

DRAWN BY		JFC
REVISIONS		
<div><div>△</div><div>△</div><div>△</div><div>△</div><div>△</div></div>		
SHEET TITLE		
ARCHITECTURAL SITE PLAN		
PROJECT NO.	SHEET NUMBER	
DATE 5 Sept 17	C1	

CODE SUMMARY	
Applicable Code	2014 Indiana Building Code (2012 IBC)
Scope of Project:	2,817 Square Foot Tenant Finish
Occupancy Classification	B
Construction Type	V B
Allowable Area	9,000 SF Based on 'B' Group Occupancy
Existing Total Area	Existing 6,758 SF < 9,000 SF (OK) 6,758 SF (Tenant Finish Area 2,817 SF)
Fire Walls/ Building Separation	None Required
Occupancy Separations	None Required
Building Elements - Fire Resistive Requirements	None Required
Incidental Use Separations	Tenant Separation
Corridors	None Required
Panic Hardware	Required
Fire Doors	None Required
Fire Dampers	None Required
Smoke Dampers	None Required
Automatic Sprinklers	None Required
Standpipes	None Required
Fire Alarm System	None Required
Smoke Detectors	None Required



LIFE SAFETY PLAN

SCALE: 1/4"=1'-0"

2504 VMP TENANT FINISH
2504 Veterans Memorial Parkway South
Lafayette, Indiana 47909

CONSTRUCTION DOCUMENT

PROFESSIONAL SEAL
09/05/2017
STEPHEN C. HOFFMAN
REGISTERED
No. PE60016188
STATE OF INDIANA
PROFESSIONAL ENGINEER
Stephen C. Hoffman, Engineer
IN # PE60016188

DRAWN BY: JAC

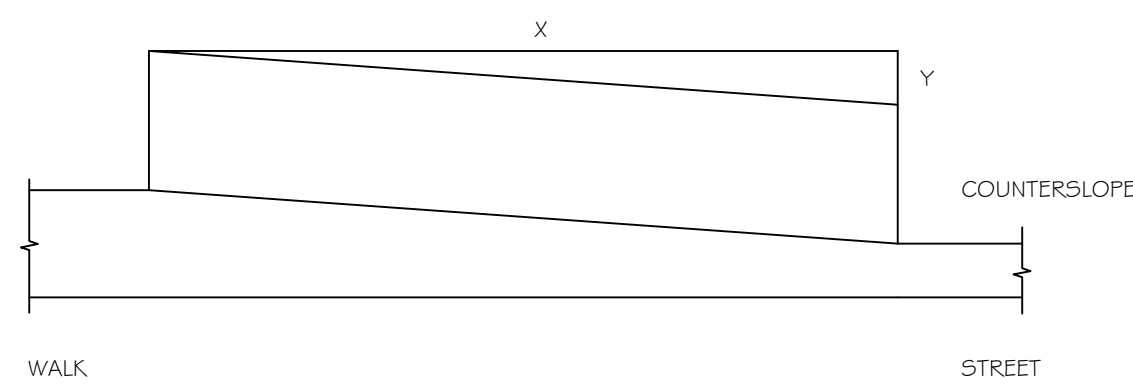
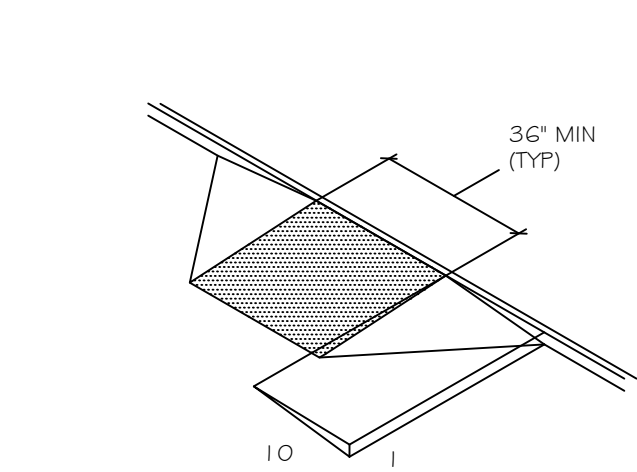
REVISIONS

- △
- △
- △
- △
- △

SHEET TITLE
LIFE SAFETY PLAN

PROJECT NO. SHEET NUMBER

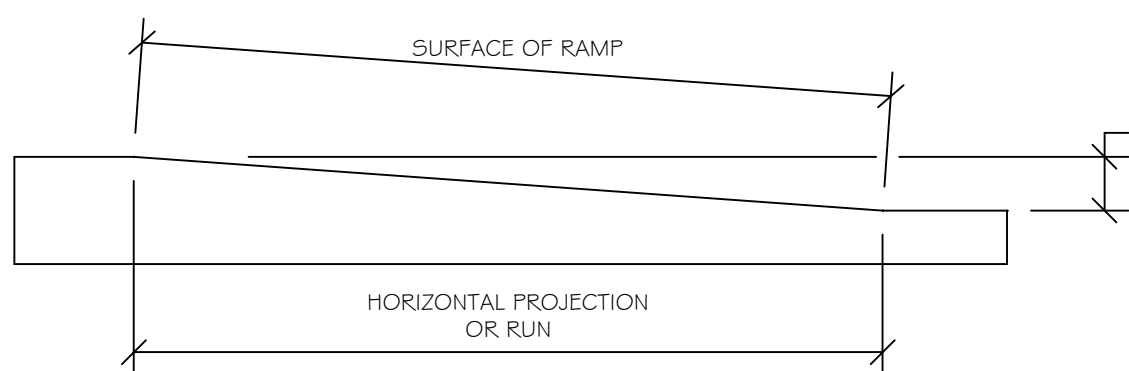
DATE
5 Sept 17
A1



NOTES:
(1) SLOPE = Y / X WHERE X IS A LEVEL PLANE NOT TO EXCEED 1:12
(2) COUNTERSLOPE SHALL NOT EXCEED 1:20

MEASUREMENT OF CURB RAMP SLOPES

SCALE: N.T.S.

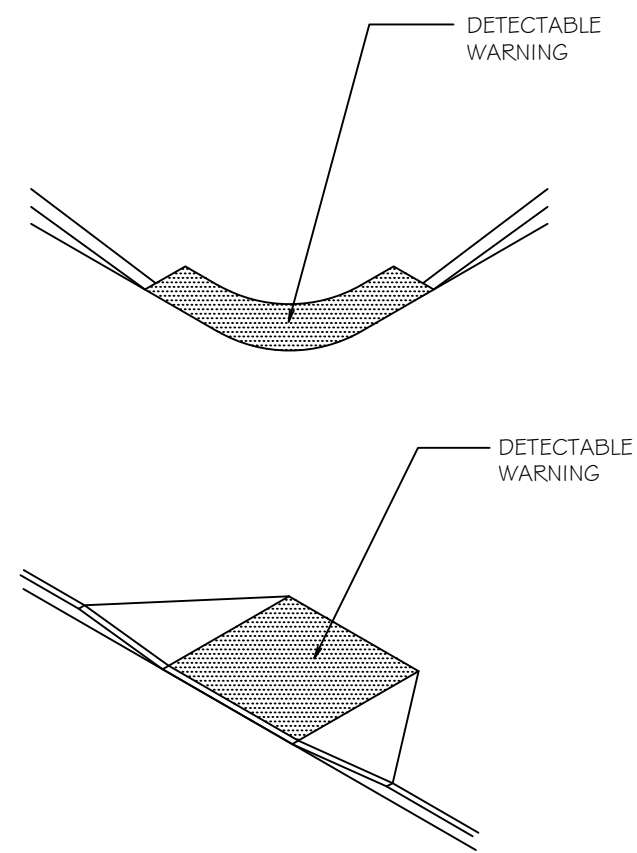


SLOPE	MAXIMUM RISE		MAXIMUM HORIZONTAL PROJECTION	
	IN.	MM	FT.	M
1:12 TO 1:15	30	760	30	9
1:16 TO 1:19	30	760	40	12
1:20	30	760	50	15

ALLOWABLE RAMP DIMENSIONS FOR CONSTRUCTION IN EXISTING SITES, BUILDINGS, AND FACILITIES

SLOPE*	MAXIMUM RISE		MAXIMUM HORIZONTAL PROJECTION	
	IN.	MM	FT.	M
STEEPER THAN 1:10 BUT NO STEEPER THAN 1:8	3	75	2	0.6
STEEPER THAN 1:12 BUT NO STEEPER THAN 1:10	6	150	3	1.5

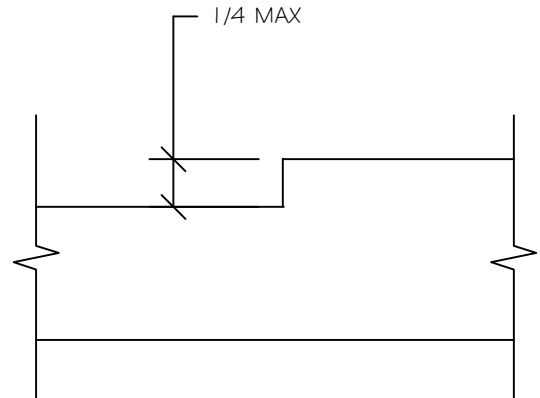
* A SLOPE STEEPER THAN 1:8 NOT ALLOWED



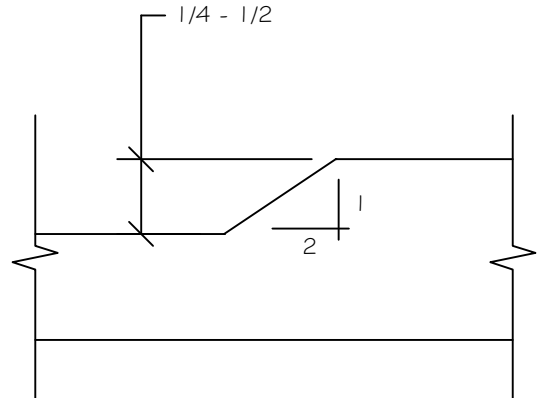
NOTE:
DO NOT USE TRUNCATED DOMES FOR
DETECTABLE WARNING.
USE "V" OR "U" SHAPED TACTILE SURFACE

WARNING SIGNALS AT CURB RAMPS

SCALE: N.T.S.



VERTICAL CHANGES IN LEVEL



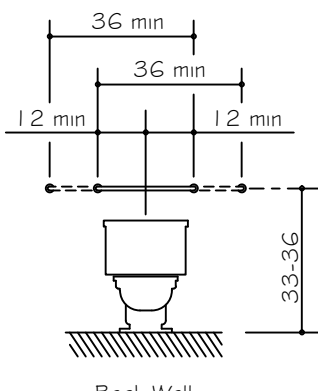
BEVELED CHANGES IN LEVEL

ACCESSIBLE ROUTES AND GROUND AND FLOOR SURFACES

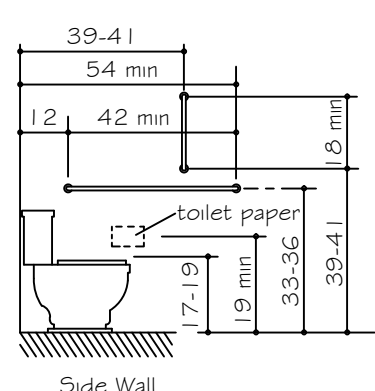
SCALE: N.T.S.

NOTES:
G.C. IS TO VERIFY THAT ALL HANDICAP FIXTURES,
HARDWARE, RAMPS & STAIRWAYS MEET THE MINIMUMS &
MAXIMUMS SHOWN ON THIS SHEET.

Notes:
1. These details are not all inclusive. See plumbing sheets for additional information.
2. Handicapped sign age for the bathrooms is located on the wall adjacent to the latch side of the door. Sign must be located 60" from center of sign to the finish floor.
3. Water closet flush handles are to be on the wide side of the room or stall.



Back Wall



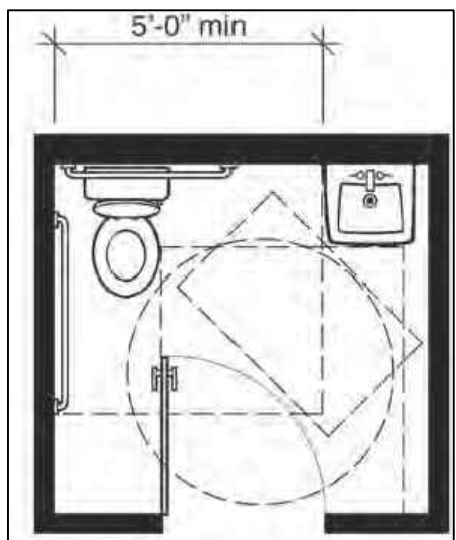
Side Wall

Grab Bars at Water Closets

PLUMBING NOTES:
Hot water and drain pipes under lavatories shall be insulated or otherwise configured to protect against contact. There shall be no sharp or abrasive surfaces under lavatories.

OTHER NOTES:
- Sinks shall be mounted with the counter or rim no higher than 34 inches above fin. floor.
- Each sink will have a mirror above the sink that complies with this standards.
- Knee clearance that is at least 27 in. high, 30 in. wide, and 19 in. deep shall be provided under sinks.
- Each sink shall be a max. of 6 1/2 in. deep.
- A clear floor space at least 30 in. by 48 in. shall be provided in front of sink to allow forward approach. The clear floor space shall be on an accessible route and shall extend a max. of 19 in. underneath the sink.
- Items like such, but limited to coat hooks, dispensers, shelves, and toilet partitions to comply.

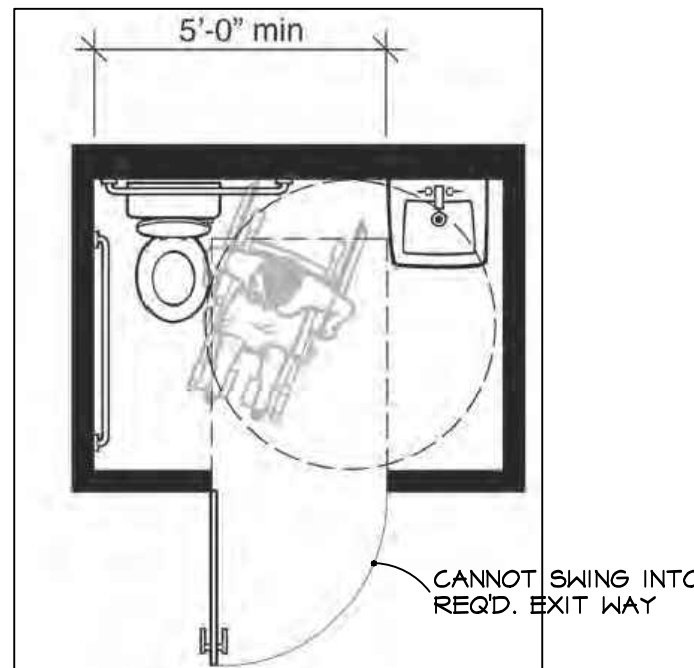
Standards



Plan-2B: Standards Minimum with In-Swinging Door

7'-0" x 6'-6" 45.50 Square Feet

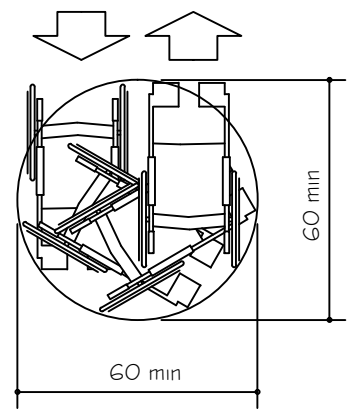
This plan shows a typical example of a single-user toilet room that meets the minimum requirements of the 2010 Standards when the entry door swings into the room. In the 2010 Standards an exception allows the entry door to swing over the clear floor spaces and clearances required at the fixtures if a clear floor space complying with section 305.3 (minimum 30 inches by 48 inches) is provided outside the arc of the door swing, section 603.2.3 exception 2. The required maneuvering space for the door, section 404.2.4.1 and Figure 404.2.4.1(a), also is a factor in room size. This clear space cannot be obstructed by the plumbing fixtures.



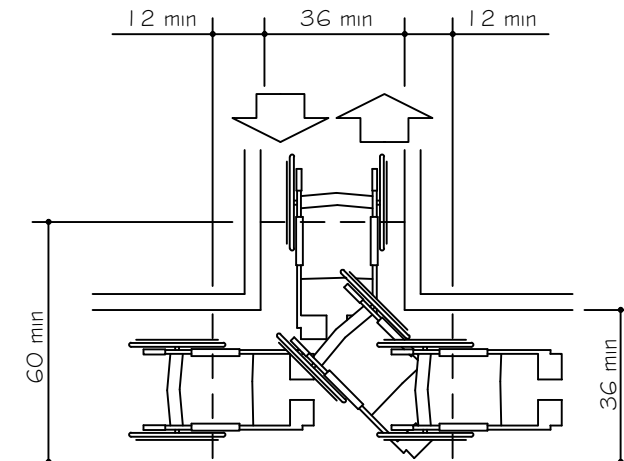
Plan-1B: Standards Minimum with Out-Swinging Door

7'-0" x 5'-0" 35.00 Square Feet

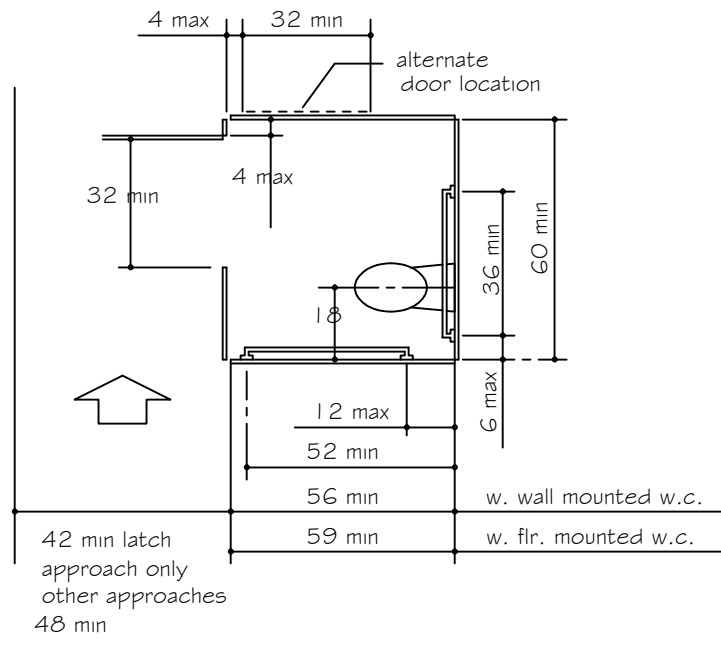
This plan shows a typical example of a single-user toilet room that meets the minimum requirements of the 2010 Standards. Features include: five-foot minimum width between the side wall of the water closet and the lavatory; 60-inch minimum circular wheelchair turning space; and 36-inch by 48-inch clear maneuvering space for the out-swinging entry door. Section 604.3.1 of the 2010 Standards requires a floor clearance at a water closet that is a minimum of 60 inches wide by 56 inches deep regardless of approach. Section 604.3.2 prohibits any other plumbing fixtures from being located in this clear space, except in residential dwelling units. The 2010 Standards, at section 304.3, allows the turning space to extend into toe and knee space provided beneath fixtures and other elements. Required maneuvering space for the entry door (inside the room) must be clear of all fixtures. If the door had both a closer and latch, section 404.2.4.1 and Figure 404.2.4.1(c) require additional space on the latch side.



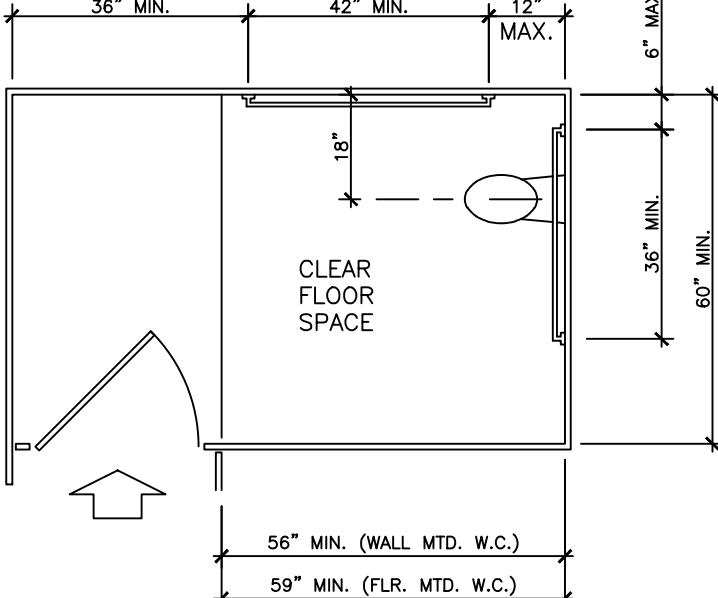
Wheelchair Turning Space



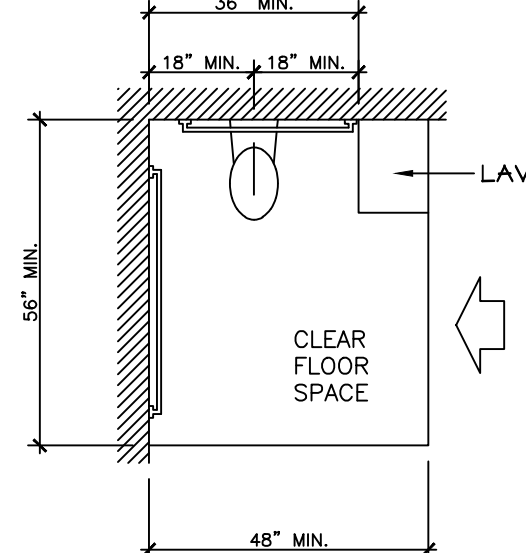
T-Shaped Space for 180 degree Turns



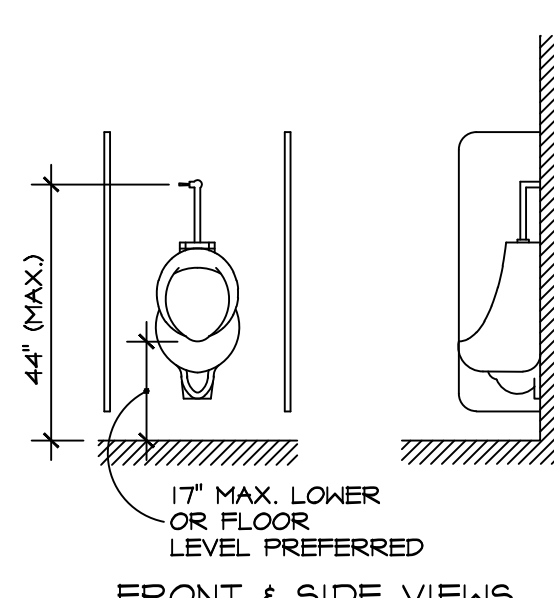
Standard Stall



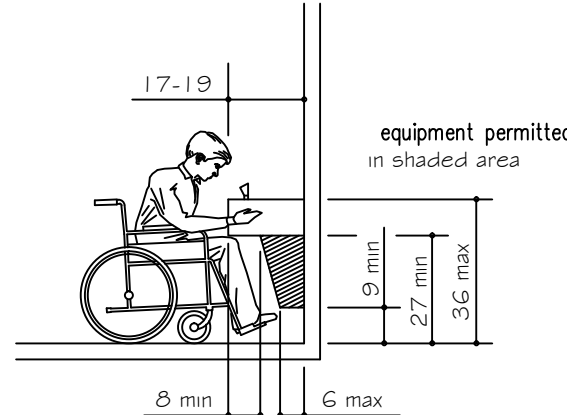
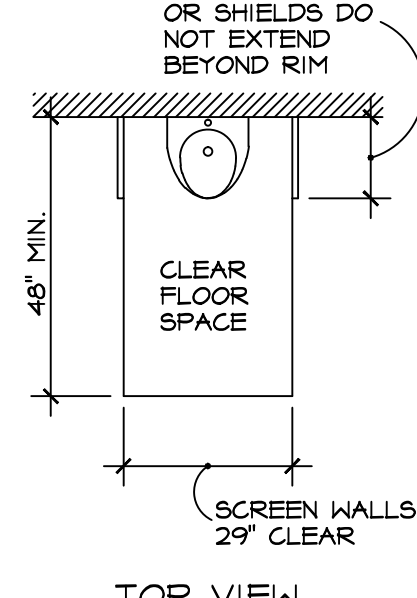
End Stall



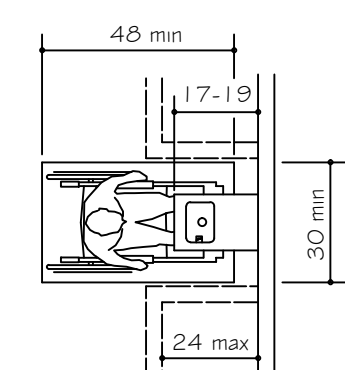
W.C. Clearance



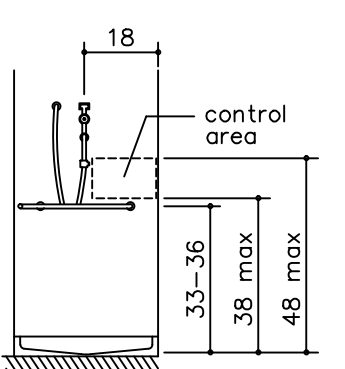
Urinal Detail



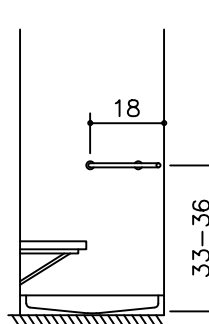
Spout Height and Knee Clearance



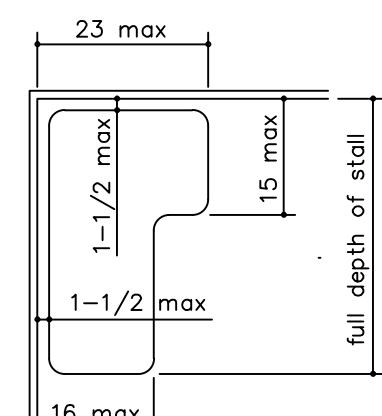
36" by 36" Stall Shower Size and Clearances



36" by 36" Stall Grab bars at Shower Stall

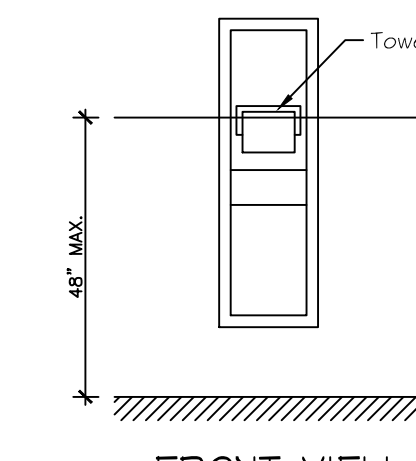


36" by 36" Stall Grab bars at Shower Stall

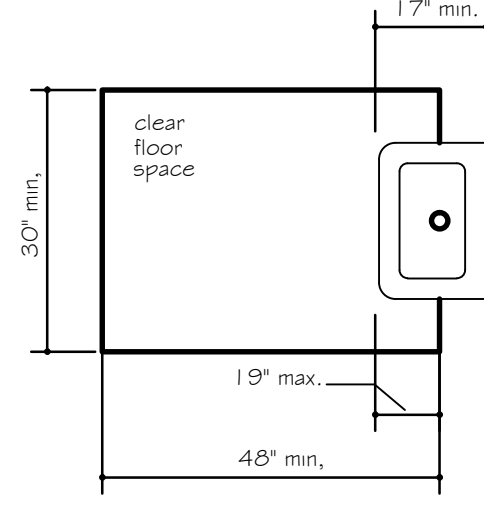


Shower Seat Design

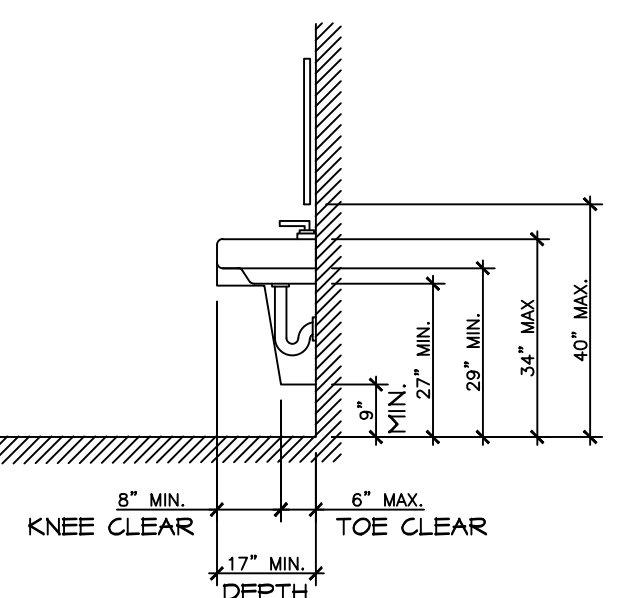
36" by 36" Stall Grab bars at Shower Stall



Towel Dispenser



TOP VIEW



SIDE VIEW

Clear Floor Space @ Lavatories

HOFFMAN ENGINEERS P.C.

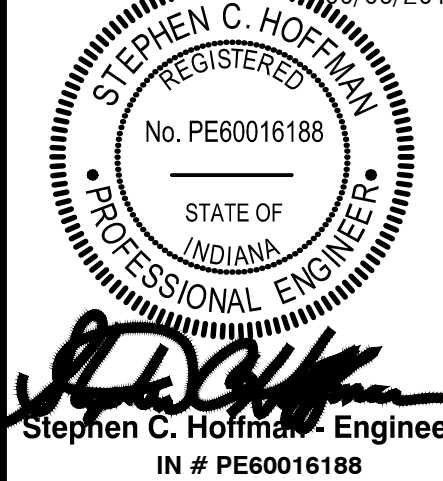
P.O. BOX 344
PINELAND, FLORIDA 33945
239-472-2547
FAX 239-472-2557
steve@hoffmanengineers.com



2504 VMP TENANT FINISH
2504 Veterans Memorial Parkway South
Lafayette, Indiana 47909

CONSTRUCTION DOCUMENT

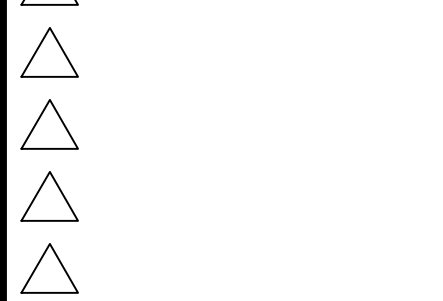
PROFESSIONAL SEAL
09/05/2017



Stephen C. Hoffman, Engineer
IN # PE60016188

DRAWN BY JJC

REVISIONS



SHEET TITLE

ADA STANDARDS

PROJECT NO. SHEET NUMBER

DATE
5 Sept 17

A2

DOOR SCHEDULE				
DOOR			LATCH TYPE	REMARKS
MARK	SIZE	DESCRIPTION TYPE		
1	1 3/4"x3'-0"x6'-8"	EXTERIOR INSULATED STEEL WITH HALF GLASS DIVIDED LITES	PANIC W/ EXTERIOR PULLS & LOCK CYLINDER	
2	1 3/4"x3'-0"x6'-8"	EXTERIOR INSULATED FLUSH STEEL	PANIC W/ EXTERIOR PULL & LOCK CYLINDER	
3	1 3/4"x3'-0"x6'-8"	INTERIOR FLUSH SOLID CORE	OFFICE	
4	1 3/4"x3'-0"x6'-8"	INTERIOR FLUSH SOLID CORE	OFFICE	
5	1 3/4"x3'-0"x6'-8"	INTERIOR FLUSH SOLID CORE	OFFICE	
6	1 3/4"x3'-0"x6'-8"	INTERIOR FLUSH SOLID CORE	PRIVACY	
7	1 3/4"x3'-0"x6'-8"	INTERIOR FLUSH SOLID CORE	PRIVACY	
8	1 3/4"x3'-0"x6'-8"	INTERIOR FLUSH SOLID CORE	OFFICE	
9	1 3/4"x3'-0"x6'-8"	INTERIOR FLUSH SOLID CORE	STOREROOM	
10	1 3/4"x3'-0"x6'-8"	INTERIOR FLUSH SOLID CORE	OFFICE	
11	1 3/4"x3'-0"x6'-8"	INTERIOR FLUSH SOLID CORE	OFFICE	
12	1 3/4"x3'-0"x6'-8"	INTERIOR FLUSH SOLID CORE	OFFICE	

DOOR/FRAME SCHEDULE GENERAL NOTES:

- A. ALL DOORS TO HAVE 1 1/2 PAIR OF HINGES.
- B. ALL EXTERIOR DOORS TO HAVE NON REMOVABLE PIN HINGES AND LATCH GUARDS, ALONG WITH DOOR CLOSURES, STOP, WEATHER STRIPPING & HANDICAP THRESHOLDS.
- C. ALL DOORS SHALL BE SWING TYPE UNLESS OTHERWISE SPECIFIED.
- D. VERIFY DOOR SIZES WITH FIELD CONDITIONS, ADJUST AS REQUIRED.
- E. ALL KEYED LOCKS TO BE "MASTER KEYED" TO OWNER'S SYSTEM, VERIFY KEYING WITH OWNER PRIOR TO ORDERING.

ROOM FINISH SCHEDULE

OFFICE

WALLS:

PAINTED DRYWALL

FLOORS:

CARPET

BASE:

VINYL COVE

CEILING:

PAINTED DRYWALL

RESTROOMS

WALLS:

CERAMIC TILE / PAINTED DRYWALL

FLOORS:

VCT

BASE:

VINYL COVE

CEILING:

PAINTED DRYWALL

MECHANICAL

WALLS:

PAINTED DRYWALL

FLOORS:

STAINED & SEALED CONCRETE

BASE:

VINYL COVE

CEILING:

PAINTED DRYWALL

RECEP. AREA

WALLS:

PAINTED DRYWALL

FLOORS:

CERAMIC TILE / CARPET

BASE:

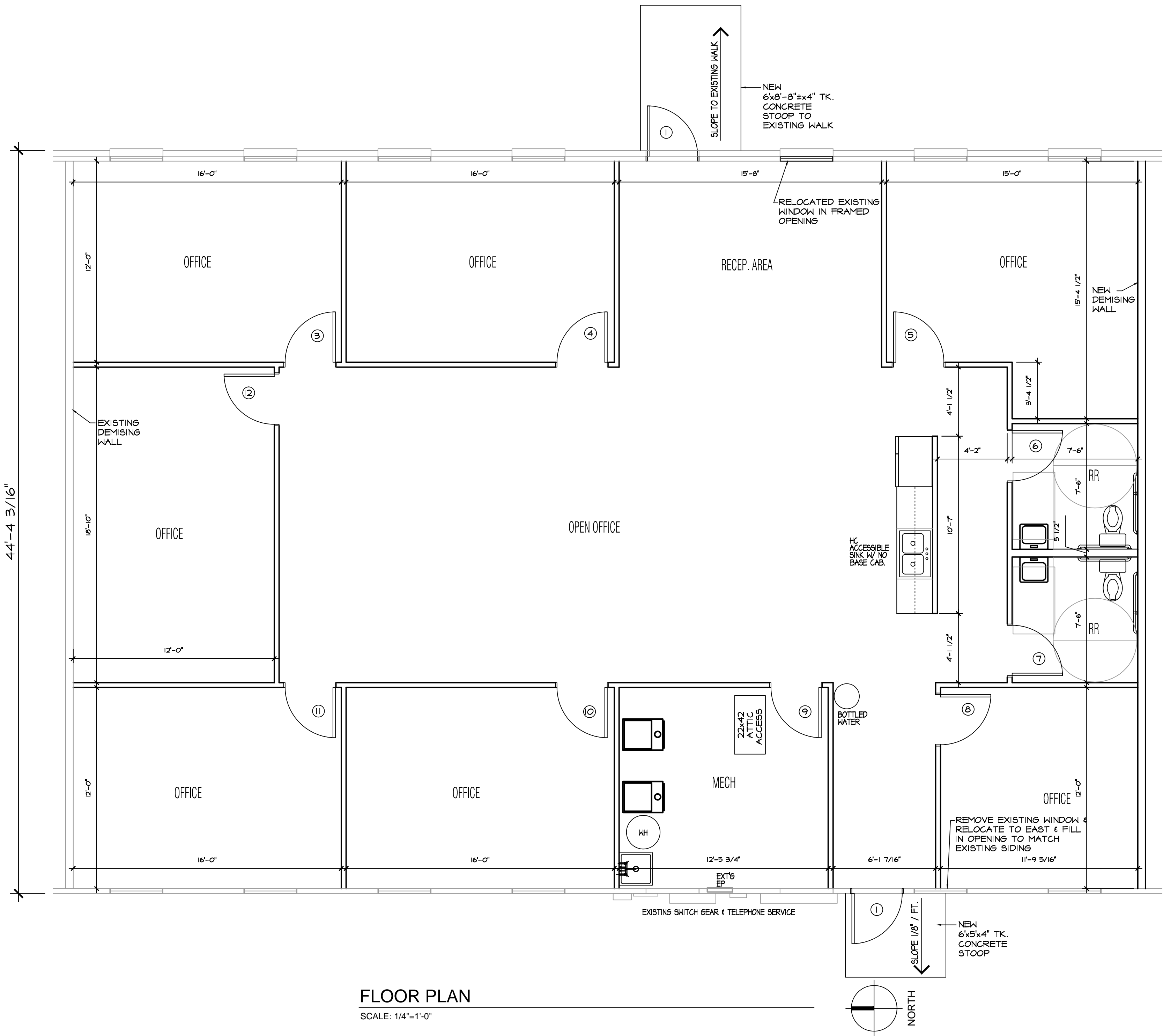
VINYL COVE

CEILING:

PAINTED DRYWALL

GENERAL FLOOR PLAN NOTES:

1. DO NOT SCALE DRAWINGS, USE ONLY WRITTEN DIMENSIONS.
2. ENGINEER MUST BE NOTIFIED OF ANY DISCREPANCIES IN DIMENSIONS, CODE REQUIREMENTS (BOTH STATE AND LOCAL), AND OTHER CONDITIONS INDICATED BY THESE DOCUMENTS PRIOR TO PROCEEDING WITH THE PROJECT.
3. THE CONTRACTOR SHALL VERIFY ALL MECHANICAL AND ELECTRICAL REQUIREMENTS AND CLEARANCES PRIOR TO PROCEEDING WITH THE PROJECT AND SHALL NOTIFY THE CONSTRUCTION MANAGER OF ANY DISCREPANCIES.
4. IF CONDITIONS AT THE JOB SITE ARE DIFFERENT THAN THOSE ILLUSTRATED IN THE CONTRACT DOCUMENTS, NOTIFY THE ENGINEER IMMEDIATELY.
5. ALL DIMENSIONS ARE TAKEN FROM FACE OF STUD TO FACE OF STUD OR OUT TO OUT OF MASONRY AND CONCRETE UNLESS OTHERWISE NOTED. DIMENSIONS WITH ± TO BE FIELD VERIFIED BY CONTRACTOR.
6. CONTRACTOR SHALL PROVIDE SOLID BLOCKING FOR GRAB BARS, CABINETRY, BATH ACCESSORIES, HANDRAILS, ETC. AND ROUGH OPENINGS AS REQUIRED.
7. INTERIOR WALLS AND PARTITIONS ARE 2 X 4 STUD (3 1/2), 16" O.C. UNLESS OTHERWISE NOTED.
8. ALL WOOD IN CONTACT WITH CONCRETE OR MASONRY SHALL BE PRESSURE TREATED MATERIAL.



FLOOR PLAN

SCALE: 1/4"=1'-0"

2504 VMP TENANT FINISH
2504 Veterans Memorial Parkway South
Lafayette, Indiana 47909

CONSTRUCTION
DOCUMENT

PROFESSIONAL SEAL
STEPHEN C. HOFFMAN
REGISTERED
No. PE60016188
STATE OF
INDIANA
PROFESSIONAL ENGINEER
Stephen C. Hoffman, Engineer
IN # PE60016188

DRAWN BY: JAC

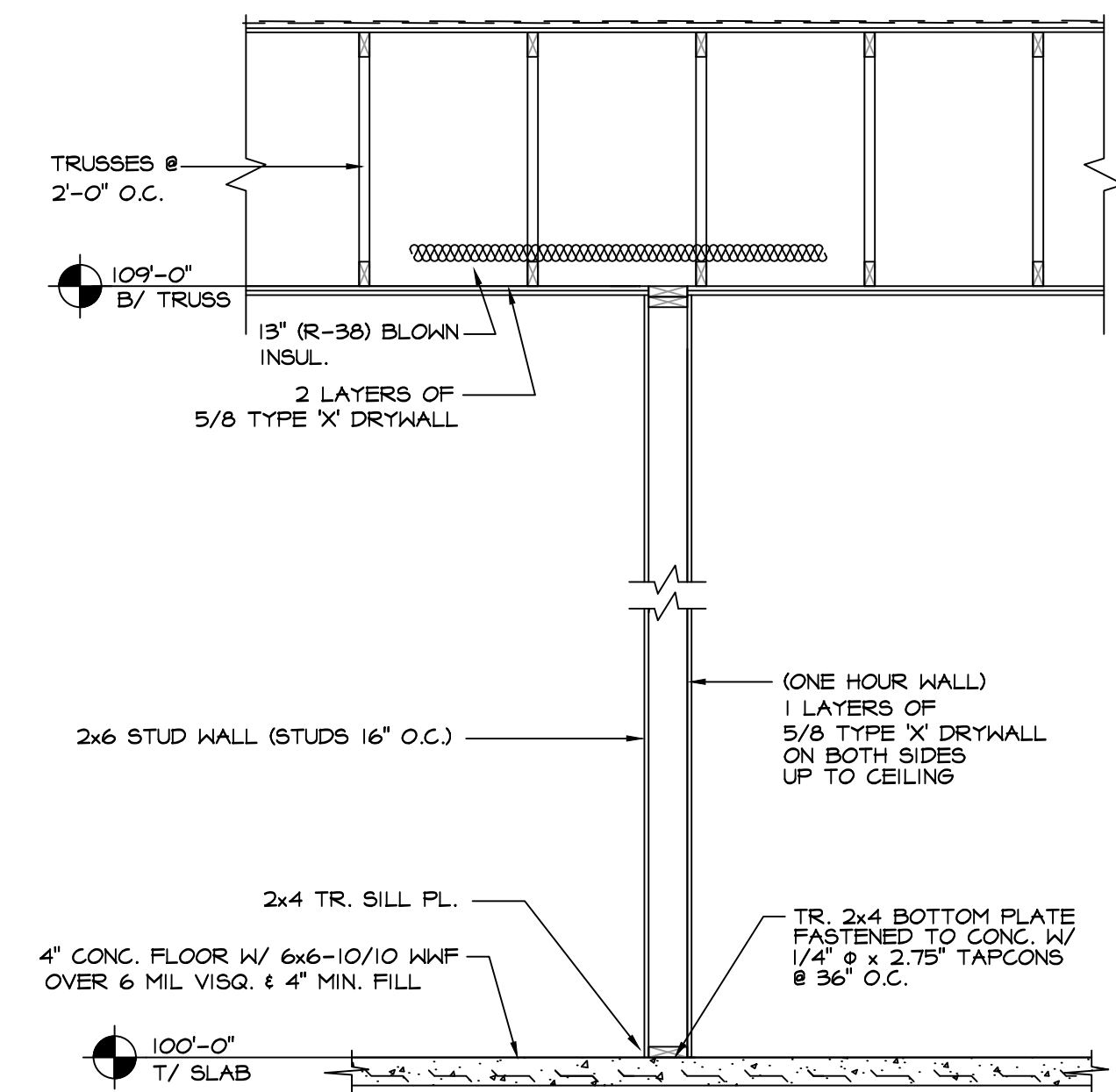
REVISIONS

△
△
△
△
△

SHEET TITLE
FLOOR
PLAN

PROJECT NO. SHEET NUMBER

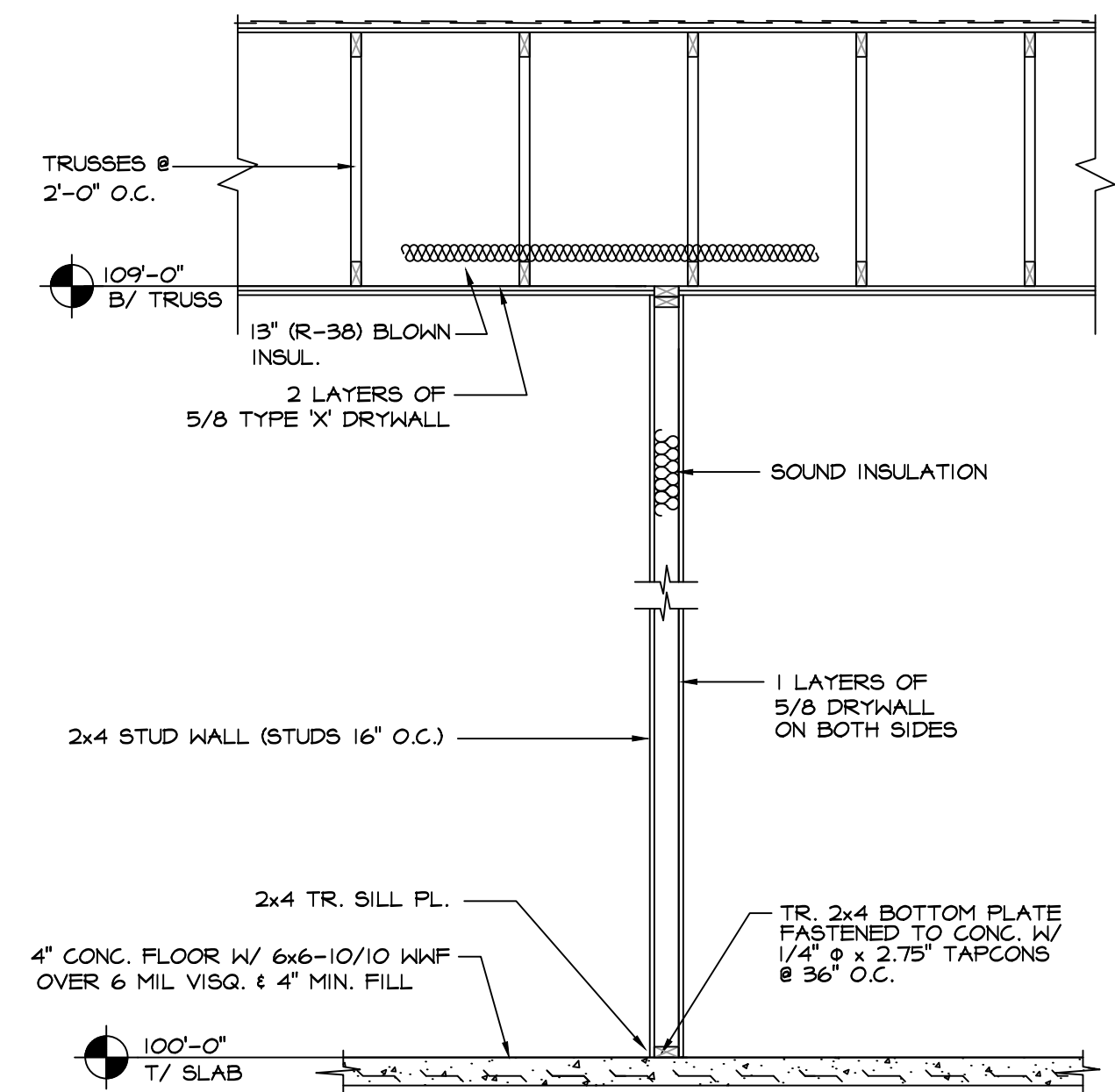
DATE
5 Sept 17
A3



NOTE:
 PROVIDE ONE PART ELASTOMERIC SEALANT FORMULATED FOR USE IN A THROUGH-PENETRATION FIRE STOP SYSTEM FILLING OPENINGS AROUND PENETRATIONS THROUGH WALLS AND FLOORS, HAVING FIRE RESISTANCE RATING INDICATED AS ESTABLISHED BY TESTING IDENTICAL ASSEMBLIES PER ASTM 814 BY UNDERWRITERS LABORATORIES OR OTHER TESTING AND INSPECTING AGENCY ACCEPTABLE TO AUTHORITIES HAVING JURISDICTION. SUBJECT TO COMPLIANCE WITH REQUIREMENTS, PRODUCTS THAT MAY BE INCORPORATED IN THE WORK INCLUDE, BUT ARE NOT LIMITED TO THE FOLLOWING: 1) DOW CORNING FIRE STOP SEALANT, DOW CORNING CORP.; 2) 3M FIRE BARRIER CAULK CP-2 ELECTRICAL PRODUCTS DIV./3M; 3) RTV 7403, GENERAL ELECTRIC CO.; AND 4) FYRE PUTTY, STANDARD OIL MATERIALS CO.

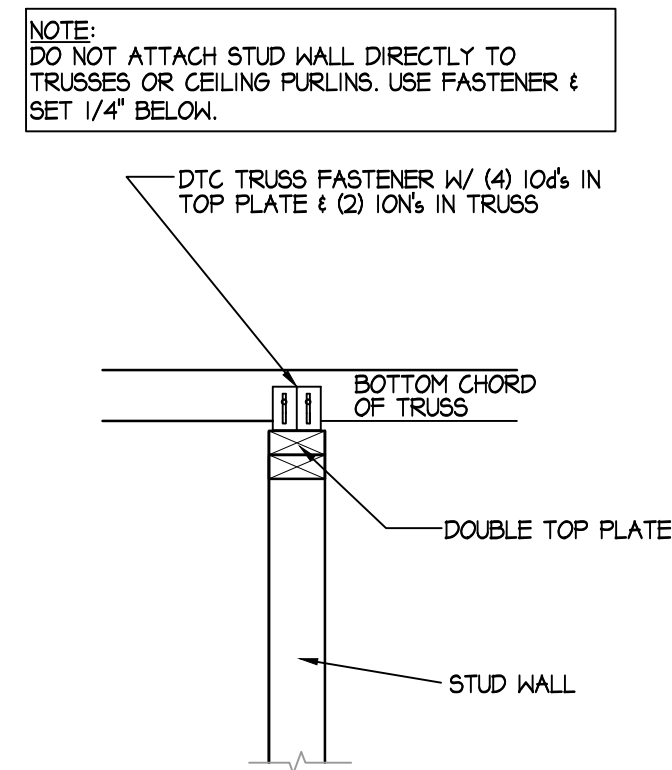
TYPICAL DEMISING WALL

SCALE: 1/2"=1'-0"



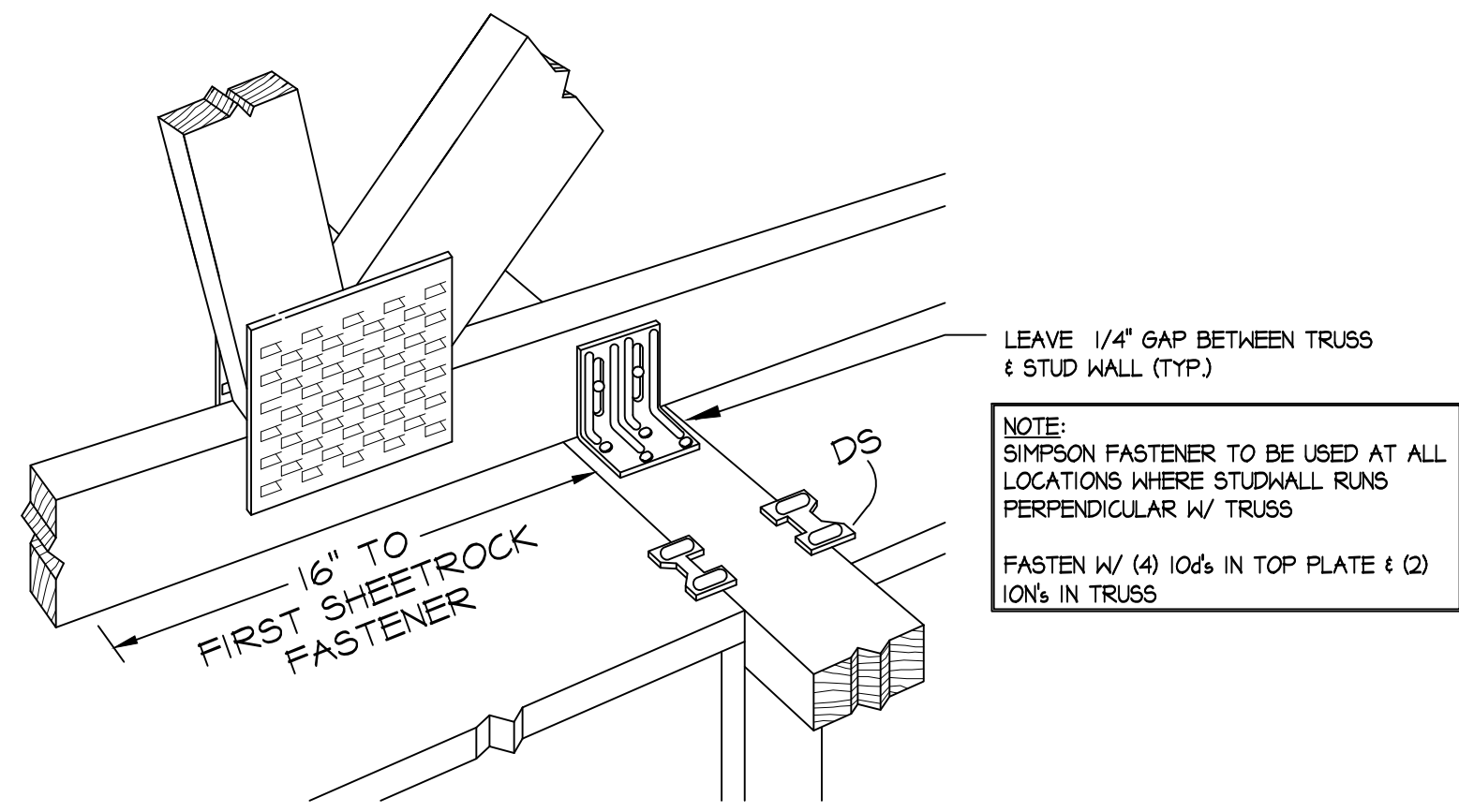
TYPICAL INTERIOR STUD WALL

SCALE: 1/2"=1'-0"



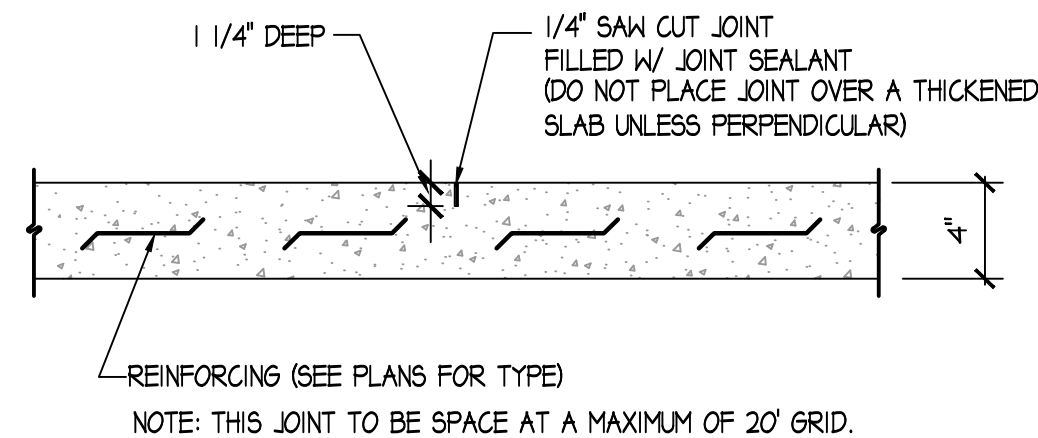
TYPICAL INTERIOR STUD WALL DETAIL

NOT TO SCALE



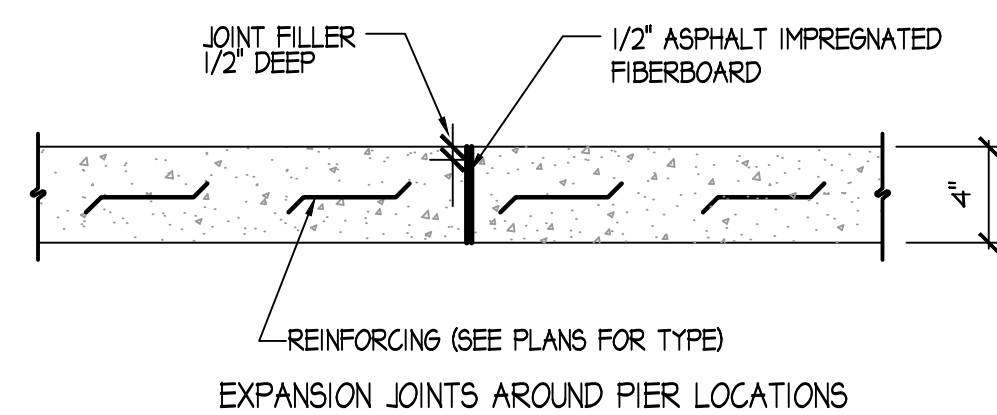
DTC PLATE-TO-TRUSS FASTENER

NOT TO SCALE



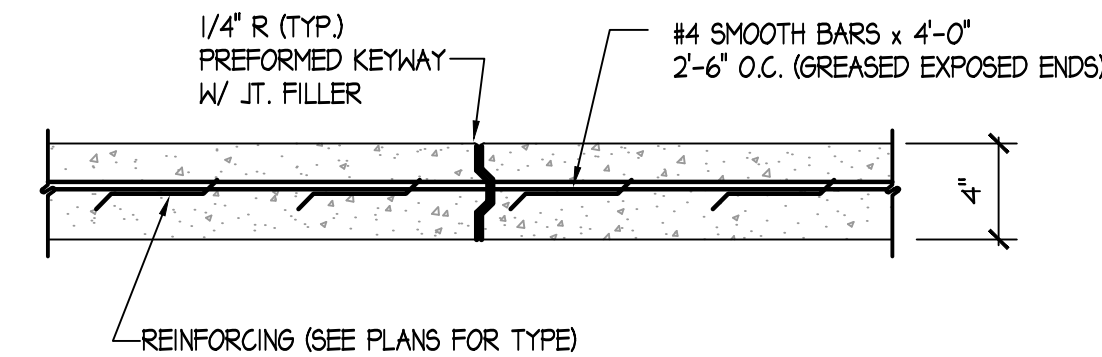
TYPICAL CONTROL JOINT

NOT TO SCALE



TYPICAL EXPANSION JOINT DETAIL

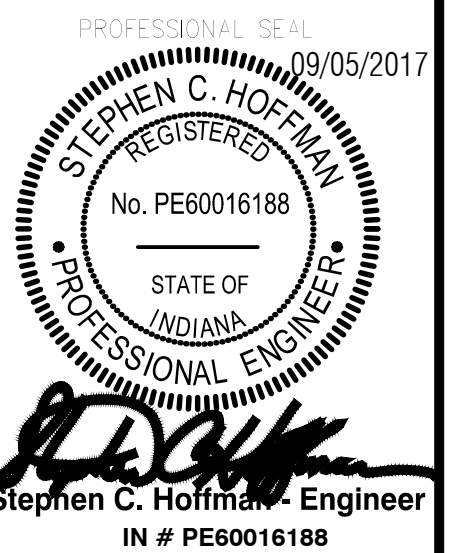
NOT TO SCALE



TYPICAL CONSTRUCTION JOINT

NOT TO SCALE

CONSTRUCTION DOCUMENT



Stephen C. Hoffman, Engineer
 IN # PE60016188

DRAWN BY: JAC

REVISIONS



SHEET TITLE

SECTIONS & DETAILS

PROJECT NO. SHEET NUMBER

DATE
 5 Sept 17

A4

PLUMBING FIXTURE PIPING SCHEDULE

ITEM	FIXTURE	WASTE	VENT	C.W.	H.W.	FIXTURE MOUNTING HEIGHTS
P-1	Handicapped Water Closet	3"	2"	1/2"		Floor Mounted
P-2	Wall Hung Lavatory	1 1/4"	1 1/4"	1/2"	1/2"	Wall Mounted 34" Max.
P-3	Stainless Steel Sink	1 1/2"	1 1/2"	1/2"	1/2"	Counter Mounted
P-4	Mop Sink	3"	2"	3/4"	3/4"	Floor Mounted

- NOTES:
- ALL BRANCH SIZES SHOWN IN THE ABOVE SCHEDULE ARE INDIVIDUAL BRANCH SIZES TO VALVES, FAUCETS, BUBBLERS, ECT.,.
 - WATER CLOSETS TO BE OF TANK TYPE CONSTRUCTION.
 - ALL FIXTURES SHALL HAVE A CHROME-PLATED SHUT OFF VALVE ACCESSIBLE AT THE FIXTURES.
 - HANDICAPPED WATER CLOSETS SHALL HAVE THE FLUSH TRIP LEVER LOCATED ON THE WIDE SIDE OF THE ROOM.

FLOOR DRAIN SCHEDULE

TYPE	JAY R. SMITH		WADE		ZURN		SEE
	FLOOR DRAIN	TRAP	FLOOR DRAIN	TRAP	FLOOR DRAIN	TRAP	NOTE
FD	2040-A	Integral	1120-CO-A	Integral	Z1-22	Integral	1,2

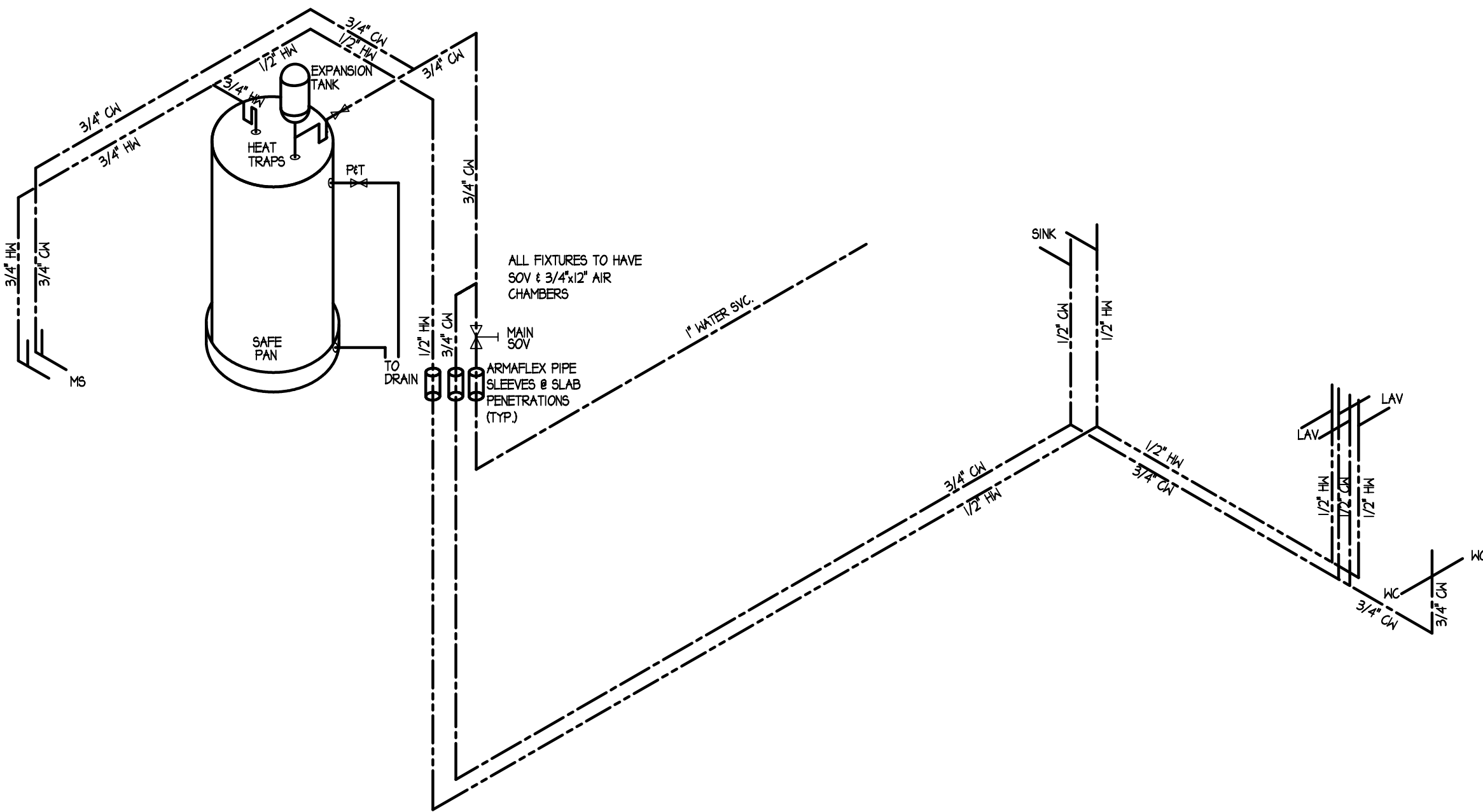
- NOTES:
- ALL FLOOR DRAINS SHALL BE FULL SIZE OF THE CONNECTING WASTE LINE SHOWN ON THE DRAWINGS, UNLESS OTHERWISE NOTED.
 - ALL FLOOR DRAINS SHALL HAVE NICKEL BRONZE RIMS AND STRAINERS. THE STRAINERS SHALL HAVE A 5" MINIMUM DIAMETER OR TWICE THAT OF THE CONNECTING WASTE LINE, UNLESS OTHERWISE NOTED. ALL FLOOR DRAINS TO HAVE TRAP SEALS.

GENERAL PLUMBING NOTES:

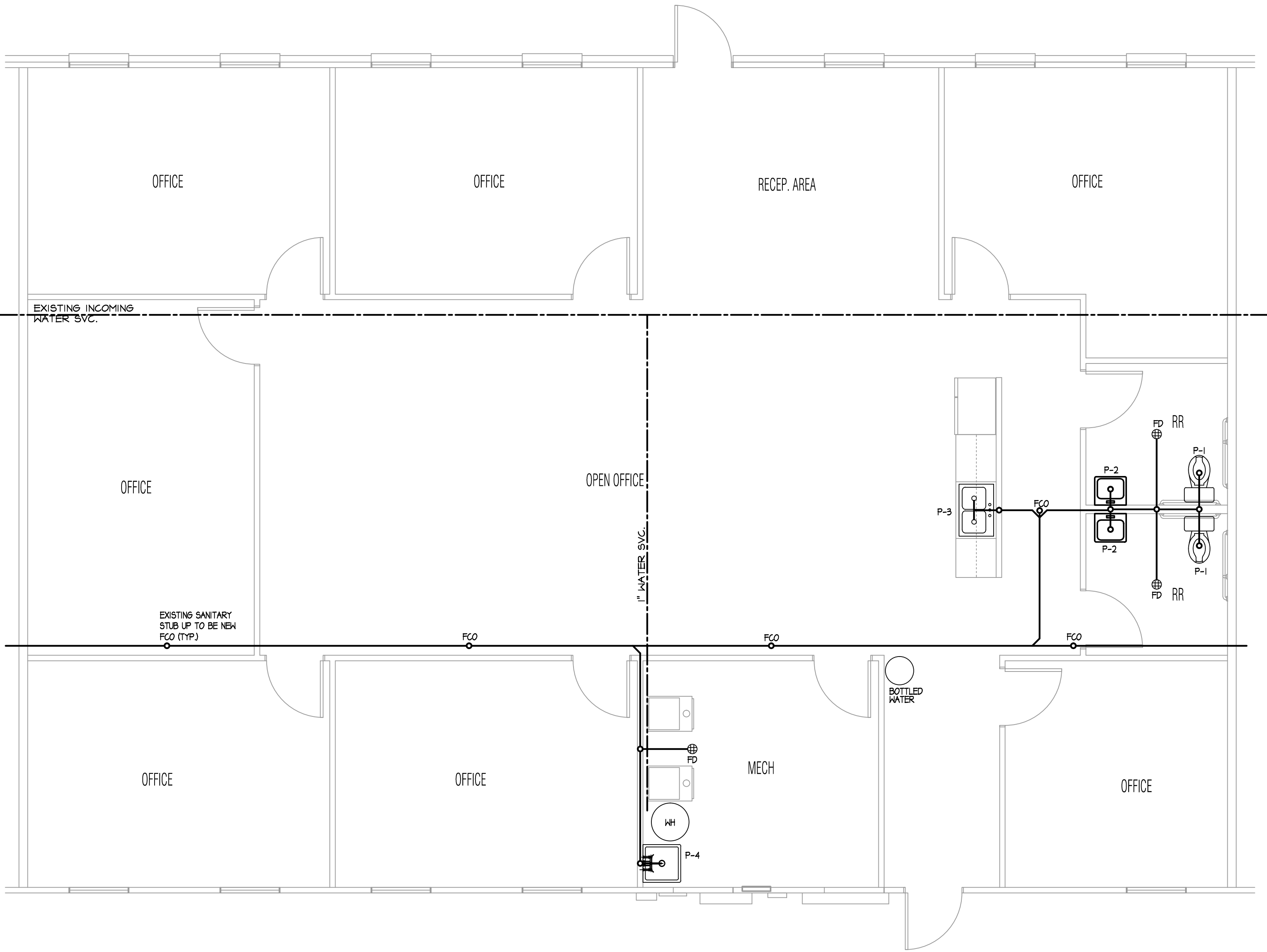
- ALL WASTE AND VENT PIPING SHALL BE SCHEDULE 40 PVC PER CHAPTERS 7, 8 & 9 OF THE I.P.C. WITH INDIANA AMENDMENTS TO INCLUDED CHAPTER 14.
- ALL FITTINGS USED FOR THE DRAIN, WASTE AND VENT SYSTEMS MUST BE IN ACCORDANCE WITH CHAPTERS 7, 8 & 9 OF THE I.P.C. WITH INDIANA AMENDMENTS TO INCLUDED CHAPTER 14.
- VENTS BELOW THE FLOOR & BELOW THE FLOOD LEVEL OF THE FIXTURE ARE NOT PERMITTED. THE MAXIMUM DISTANCE FROM FLOOR DRAIN TO VENT IS 5'-0" AND MAXIMUM DISTANCE FROM WATER CLOSET TO VENT IS 6'-0".
- VENTS SHALL TERMINATE A MINIMUM DISTANCE ABOVE THE ROOF AS PER SECTION 906.1.
- ALL HORIZONTAL WASTE AND DRAIN PIPING OF 3" IN DIAMETER OR LESS MUST BE INSTALLED WITH A GRADE OF AT LEAST 1/4" PER FOOT AND PIPING LARGER THAN 3" IN DIAMETER MUST BE INSTALLED WITH A GRADE OF AT LEAST 1/8" PER FOOT.
- ALL UNDERGROUND WATER SUPPLY PIPING TO BE TYPE "K" BELOW CONCRETE SLAB. ALL HOT AND COLD WATER PIPING SHALL BE TYPE "L" HARD COPPER WITH COPPER OR WROUGHT BRASS FITTINGS OR CPVC PER CHAPTER 6 OF THE I.P.C. WITH INDIANA AMENDMENTS TO INCLUDE CHAPTER 14. PEX IS ALLOWED. ALL RUNS MUST BE LOOPEO TO REDUCE THE NUMBER OF TEES AND ELBOWS TO A MINIMUM. SUPPORTS AT 2'-8" O.C. HORIZONTAL AND AT EACH FLOOR AND AT MID FLOOR.
- ALL FIXTURES AND PIPING SHALL MEET NSF/ANSI 61-6, NSF/ANSI 372-2011 AND FEDERAL LEAD PLUMBING LAW (U.S. SENATE BILL NO. S. 3874) AS IT APPLIES TO LEAD CONTENT OF FIXTURES, PIPING, SOLDER AND FLUXES (25% LEAD WITH RESPECT TO WETTED SURFACES AND 20% LEAD IN SOLDER AND FLUXES). EFFECTIVE 4 JAN. 2014 PER SECTION 316.1.3.
- ALL HOT AND COLD WATER PIPING SHALL BE COVERED WITH 1/2" ARMAFLEX PIPE INSULATION.
- BACKFLOW PREVENTERS MUST BE IN ACCORDANCE WITH STANDARDS REFERENCED IN SECTIONS 204, 603, & 1002.
- PLUMBING CONTRACTOR SHALL PROVIDE SHUT-OFF VALVES AT EACH FIXTURE.
- PLUMBING CONTRACTOR SHALL COORDINATE WITH CARPENTER FOR LOCATIONS OF PLUMBING FIXTURES & PIPING.
- PLUMBING CONTRACTOR SHALL PROVIDE THEIR OWN EXCAVATION, BACK FILL & COMPACTION TESTING (WITH REPORT).
- ALL PLUMBING NOT SPECIFICALLY REFERENCED ABOVE SHALL BE ACCORDING TO I.P.C. WITH AMENDMENTS.
- ALL FIXTURES SHALL HAVE A CHROME-PLATED KEY OPERATED VALVE ACCESSIBLE AT THE FIXTURES.
- HANDICAPPED WATER CLOSETS SHALL HAVE THE FLUSH TRIP LEVER LOCATED ON THE WIDE SIDE OF THE ROOM.
- ALL NEW PENETRATIONS THROUGH FLOOR, CEILING OR ROOF WILL HAVE THE ANNULAR AREA BETWEEN THE ITEM AND THE OPENING SEALED AROUND THE OPENING TO PREVENT THE PASSAGE OF FIRE AND SMOKE.

PLUMBING FIXTURE SCHEDULE

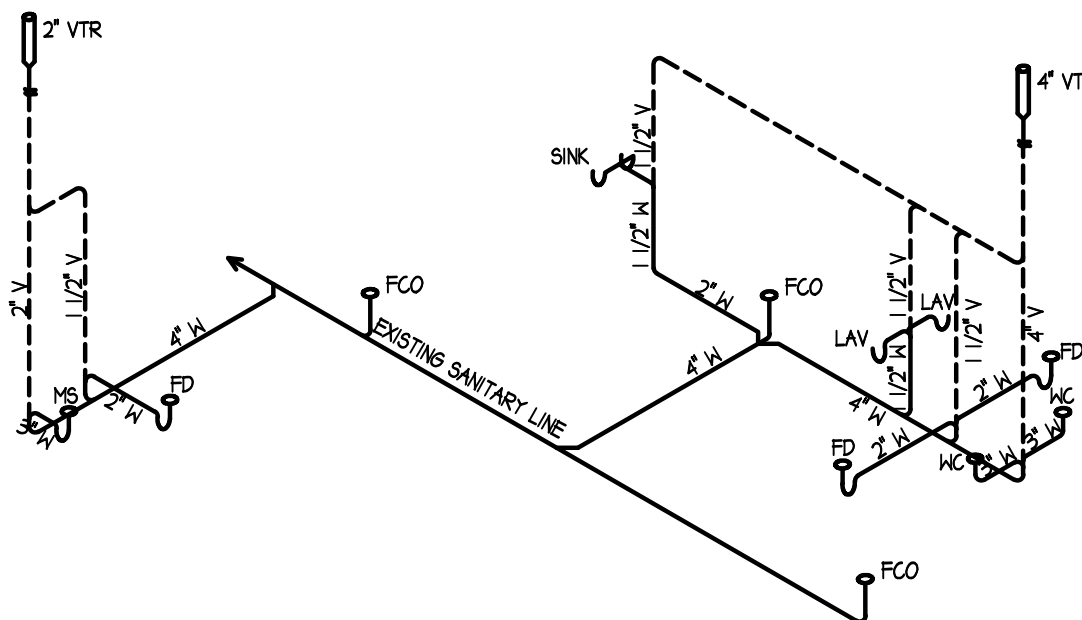
- ITEM P-1, HANDICAPPED WATER CLOSET: SHALL BE EQUAL TO AMERICAN STANDARD (CADET #2998.012) OR EQUAL, VITREOUS CHINA, FREE STANDING CLOSE COUPLED TOILET COMBINATION, SIPHON JET ACTION, ELONGATED BOWL, TANK WITH COVER, 2 BOLT CAPS WITH RETAINER CLIP WITH BENEKE # 523, OPEN FRONT WHITE SEAT WITH SELF-SUSTAINING /CHECK TYPE HINGES. NOTE: TRIP LEVER TO BE ON WIDE SIDE OF WATER CLOSET.
- ITEM P-2, WALL HUNG LAVATORY: SHALL BE EQUAL TO AMERICAN STANDARD (LUCERNE #0555.012) OR EQUAL, WALL HUNG, VITREOUS CHINA LAVATORY, HAVING DELTA FAUCET #820 HOF COMBINATION SUPPLY AND POP-UP DRAIN FITTING WITH AERATOR, CHICAGO FAUCET # 1019 SUPPLY PIPES WITH WHEEL HANDLE STOPS TO WALL AND FLEXIBLE TUBE RISERS, 1 1/4" X 1 1/4" CAST BRASS "P" TRAP WITH CLEANOUT AND TRUEBRO #102 TRAP AND STOP COVER W/ J.R. SMITH CHAIR CARRIER, AND ALL PARTS NECESSARY FOR PROPER INSTALLATION. PROVIDED WITH AN AUTOMATIC SAFETY WATER MIXING DEVICE WITH A MAXIMUM SETTING OF 110 DEGREE WATER TEMPERATURE.
- ITEM P-3, STAINLESS STEEL SINK: SHALL BE EQUAL TO ELKAY (LUSTERTONE #LRAD3922), 18 GAUGE TYPE 304 STAINLESS STEEL SINK COMPLETE WITH DELTA FAUCET MODEL 100HDF, HLK-99 DRAINAGE FITTING, CHICAGO FAUCET # 1019 SUPPLY PIPES WITH WHEEL HANDLE STOPS TO WALL WITH FLEXIBLE TUBE RISERS, CAST BRASS "P" TRAP WITH CLEANOUT.
- ITEM P-4, MOP SINK: SHALL BE EQUAL TO FIAT MODEL MSB2424 24"X24"X12" MOLDED STONE MOP SERVICE BASIN. PROVIDE 3" CAST BRASS DRAIN WITH CHROME INTEGRAL STRAINER. PROVIDE CHICAGO FAUCET #897 COMBINATIONS SERVICE SINK FITTING HAVING SPOUT WITH VACUUM BREAKER, PAIL HOOK WALL BRACE, AND 3/4" HOSE THREAD. PROVIDE 4'-0" LONG HOSE WITH MALE AND FEMALE CONNECTIONS.
- ELECTRICAL WATER HEATER: SHALL BE 20 GALLON STORAGE, SUPPLY COMPLETE WITH SAFE PAN AND TEMPERATURE AND PRESSURE RELIEF VALVE AND DISCHARGE PIPING FROM THE TEMPERATURE AND PRESSURE RELIEF VALVE DISCHARGING INDIRECTLY AND INDEPENDENTLY INTO A FLOOR DRAIN, SERVICE SINK, SUMP OR A TRAPPED AND VENTED P-TRAP, WHICH IS LOCATED IN THE SAME ROOM AS THE WATER HEATER. SECTION 504.7.1 ALONG WITH A PROPERLY SIZED THERMAL EXPANSION TANK ON THE COLD WATER INLET TO EACH HEATER. NO VALVES ARE PERMITTED BETWEEN THE HEATER AND THE THERMAL EXPANSION TANK. SECTION 607.3.



HOT & COLD WATER ISOMETRIC
NOT TO SCALE



PLUMBING PLAN
SCALE: 1/4"=1'-0"



DRAIN WASTE & VENT ISOMETRIC
NOT TO SCALE

HOFFMAN ENGINEERS P.C.
P.O. BOX 344
PINELAND, FLORIDA 33945
239-472-2547
FAX 239-472-2557
steve@hoffmanengineers.com

Hoffman Engineers Inc.
State of Indiana Certificate of Authority # 16188
"GLOBAL COMMITMENT WITH
A MAIN STREET ATTITUDE"

2504 VMP TENANT FINISH

2504 Veterans Memorial Parkway South

Lafayette, Indiana 47909

CONSTRUCTION DOCUMENT

PROFESSIONAL SEAL
STEPHEN C. HOFFMAN
REGISTERED
No. PE60016188
STATE OF INDIANA
PROFESSIONAL ENGINEER

Stephen C. Hoffman, Engineer
IN # PE60016188

DRAWN BY: JAC

REVISIONS

SHEET TITLE
PLUMBING PLAN

PROJECT NO. SHEET NUMBER
P1

MECHANICAL GENERAL NOTES:

- MECHANICAL CONTRACTOR TO FURNISH ALL LABOR, MATERIAL AND EQUIPMENT REQUIRED FOR THE COMPLETION AND OPERATION ON ALL SYSTEMS IN THIS SECTION OF WORK. ALL MECHANICAL WORK SHALL BE IN STRICT ACCORDANCE WITH INDIANA MECHANICAL CODE (I.M.C.), LATEST EDITION INCLUDING ADOPTED INDIANA AMENDMENTS, ASHRAE, SMACNA, NFPA AND EPA. THE APPLICABLE PORTIONS OF THE SPECIFICATIONS ARE INCLUDED AS PART OF THIS SPECIFICATION. ALL INSTALLATIONS SHALL BE PERFORMED IN A GOOD WORKMANLIKE MANNER.
- ALL PIPING, VENTS, ETC., EXTENDING THROUGH WALLS & ROOF SHALL BE FLASHED, COUNTER FLASHED IN A WATERPROOF MANNER.
- ALL DUCTWORK INSULATION SHALL BE RUN CONTINUOUSLY THROUGH FLOORS, PARTITIONS, ROOF STRUCTURE AND DECK.
- ALL PIPING LOCATIONS SHALL BE COORDINATED W/ WORK UNDER OTHER DIVISIONS OF THE SPECIFICATIONS, TO AVOID INTERFERENCE. COORDINATE WITH ALL OTHER TRADES PRIOR TO PURCHASING OR INSTALLING EQUIPMENT AND MATERIALS.
- METAL DUCTWORK SHALL COMPLY WITH SMACNA "HVAC DUCT CONSTRUCTION STANDARDS, METAL AND FLEXIBLE" COMPLY WITH ASHRAE HANDBOOK FOR INSTALLATION OF METAL DUCTWORK. ALSO COMPLY WITH NFPA 90A. ALL TRUNK METAL DUCTWORK SHALL BE WRAPPED WITH 11/2" FOIL BACK INSULATION OR PROVIDE 1" FIBERGLASS DUCT BOARD WITH PROPER SUPPORTS OR INTERNAL LINING WITH 1" FIBERGLASS DUCT INSULATION. ALL COVERING AND LINERS INCLUDING ADHESIVES SHALL HAVE A FLAME SPREAD RATING NOT MORE THAN TWENTY-FIVE (25) AND SMOKE-DEVELOPED RATING NOT MORE THAN FIFTY (50) WHEN TESTED IN ACCORDANCE WITH ASTM-E-84. ALL SQUARE ELBOWS SHALL HAVE AIRFOIL TYPE TURNING VANES. PROVIDE VOLUME CONTROL DAMPERS AT ALL BRANCH DUCTS TO DIFFUSERS AND A MAXIMUM OF 5 FEET ABOVE THE CEILING. ALL DUCTWORK SHALL BE GALVANIZE SHEET METAL & SHALL BE CONSTRUCTED & INSTALLED IN ACCORDANCE WITH SMACNA STANDARDS. DUCT SIZES SHOWN ARE NET FREE AREA. INCREASE RECTANGULAR SHEET METAL DUCT SIZES BY TWO TIMES THE THICKNESS OF INSULATION.
- MAXIMUM FLEXIBLE DUCT LENGTH SHALL BE 10'-0". ALL FLEXIBLE DUCT SHALL CONFORM TO THE REQUIREMENTS OF UL 181 FOR CLASS I FLEXIBLE AIR DUCTS. SUPPORT TO ELIMINATE SAGGING & KINKING.
- SUPPORT PIPING RIGIDLY WITH APPROVED HANGERS AT INTERVALS NOT EXCEEDING TEN FEET OR BY ANOTHER APPROVED DUCT SUPPORT SYSTEM DESIGNED IN ACCORDANCE WITH THE BUILDING CODE. RUNS SHOULD BE NEAT, STRAIGHT LINES, TIGHT TO STRUCTURES OR WALLS. DO NOT OBSTRUCT USABLE SPACE. WHERE DUCTS PASS THROUGH WALLS, FLOORS, CEILINGS, ETC., PROVIDE FLANGES AND APPROPRIATE SEALING METHODS TO MAINTAIN INTEGRITY OF SURFACE PENETRATED AND PROVIDE A FINISHED APPEARANCE. PROVIDE FIRE STOPPING AS REQUIRED FOR FIRE RATED PENETRATIONS.
- ALL HVAC EQUIPMENT TO BE INSTALLED PER MFG. REQUIREMENTS AS SHOWN. UTILIZE FACTORY FILTERS DURING CONSTRUCTION & REPLACE W/ REPLACEABLE MEDIA IN METAL FILTER FRAME JUST PRIOR TO TEST & BALANCE & AT TIME BUILDING IS TURNED OVER TO THE OWNER. COORDINATE WITH THE OWNER.
- PROVIDE FLEXIBLE CONNECTIONS AT ALL EQUIPMENT FOR SOUND AND VIBRATION ISOLATION.
- MAINTAIN MIN 10' BETWEEN OUTDOOR AIR INTAKES AND EXHAUST FAN DISCHARGE, PLUMBING, VENT, ETC.
- INSTALL ACCESSORY ITEMS, SUCH AS THROUGH THE WALL UNITS, AIR CLEANERS, HUMIDIFIERS, ETC. IN STRICT ACCORDANCE WITH MANUFACTURER'S PRINTED INSTRUCTIONS.
- PROVIDE AND INSTALL ALL CONDENSATE DRAIN LINES FROM HUMIDIFIERS AND COOLING COILS AS REQUIRED. TERMINATE ALL DRAIN LINES OVER OPEN SIGHT DRAINS, FLOOR DRAINS OR ROOF DRAINS WITH A MIN. OF 6" AIR GAP.
- THERMOSTAT WIRING AND LOCATION: THERMOSTAT MUST BE MOUNTED ON A VERTICAL VIBRATION-FREE SURFACE FREE FROM AIR CURRENTS AND IN ACCORDANCE WITH THE FURNISHED INSTRUCTION. MOUNT THE THERMOSTAT APPROXIMATELY 5 FEET (1.5M) ABOVE THE FLOOR AREA WHERE IT WILL BE EXPOSED TO A FREE CIRCULATION OF AVERAGE TEMPERATURE AIR. ALWAYS REFER TO THE THERMOSTAT INSTRUCTIONS AS WELL AS UNIT WIRING DIAGRAM AND WIRE ACCORDINGLY. AVOID MOUNTING THE THERMOSTAT IN THE FOLLOWING LOCATIONS: COLD AREAS - OUTSIDE WALLS OR AREAS WHERE DRAFTS MAY AFFECT THE OPERATION OF THE CONTROL. HOT AREAS - AREAS WHERE THE SUN'S RAYS, RADIATION OR WARM AIR CURRENTS MAY AFFECT CONTROL OPERATION. DEAD AREAS - AREAS WHERE AIR CANNOT CIRCULATE FREELY, SUCH AS BEHIND DOORS OR IN CORNERS.
- CONTRACTOR SHALL VISIT THE JOB SITE AND BE FAMILIAR WITH ALL PROJECT CONDITIONS PRIOR TO FABRICATING ANY EQUIPMENT, DUCTWORK, ETC. NO ALLOWANCES WILL BE MADE FOR CONTRACTOR UNFAMILIARITY WITH PROJECT CONDITIONS.
- MECHANICAL CONTRACTOR SHALL BALANCE SYSTEM TO WITHIN 10% OF AIR QUANTITIES INDICATED ON PLANS AND PROVIDE OWNERS REPRESENTATIVE A COMPLETE BALANCE REPORT.
- ALL EQUIPMENT SHALL HAVE 1-YEAR WARRANTY & COMPRESSORS SHALL HAVE ADDITIONAL 4-YEAR EXTENDED WARRANTY.
- ALL CONTROL WIRING & CONDUIT SHALL COMPLY WITH NEC.
- PIPE & DUCT ROUTING SHOWN IS SCHEMATIC. HVAC CONTRACTOR SHALL PROVIDE ANY ADDITIONAL OFFSETS AND FITTING, INCLUDING DIVIDED DUCTS, REQUIRED FOR PROPER INSTALLATION AND TO MAINTAIN CLEARANCES AS ENCOUNTERED IN THE FIELD.
- LIGHT FIXTURE LOCATIONS TAKE PRECEDENCE OVER DUCT RUNS, DIFFUSER AND GRILLE LOCATIONS. LOCATE DIFFUSERS AND GRILLES TO ACCOMMODATE LIGHTING LAYOUT.
- DO NOT SCALE DRAWINGS. SEE ARCHITECTURAL DRAWINGS & REFLECTED CEILING PLANS FOR EXACT LOCATION OF DOORS, WINDOWS, CEILING DIFFUSERS, ETC.
- M.C. SHALL COORDINATE THE WORK WITH ALL TRADES INVOLVED IN THE CEILING WORK TO INSURE CLEARANCES FOR FIXTURES, DUCTS, PIPING CEILING SUSPENSION SYSTEMS, ETC., NECESSARY TO MAINTAIN THE FINISHED CEILING HEIGHTS INDICATED ON ARCHITECTURAL DRAWINGS.
- ALL NEW PENETRATIONS THROUGH FLOOR, CEILING OR ROOF WILL HAVE THE ANNULAR AREA BETWEEN THE ITEM AND THE OPENING SEALED AROUND THE OPENING TO PREVENT THE PASSAGE OF FIRE AND SMOKE.
- CONTRACTOR SHALL VISIT THE JOB SITE AND BE FAMILIAR WITH ALL PROJECT CONDITIONS PRIOR TO FABRICATING ANY EQUIPMENT, ETC. NO ALLOWANCES WILL BE MADE FOR CONTRACTOR UNFAMILIARITY WITH PROJECT CONDITIONS.

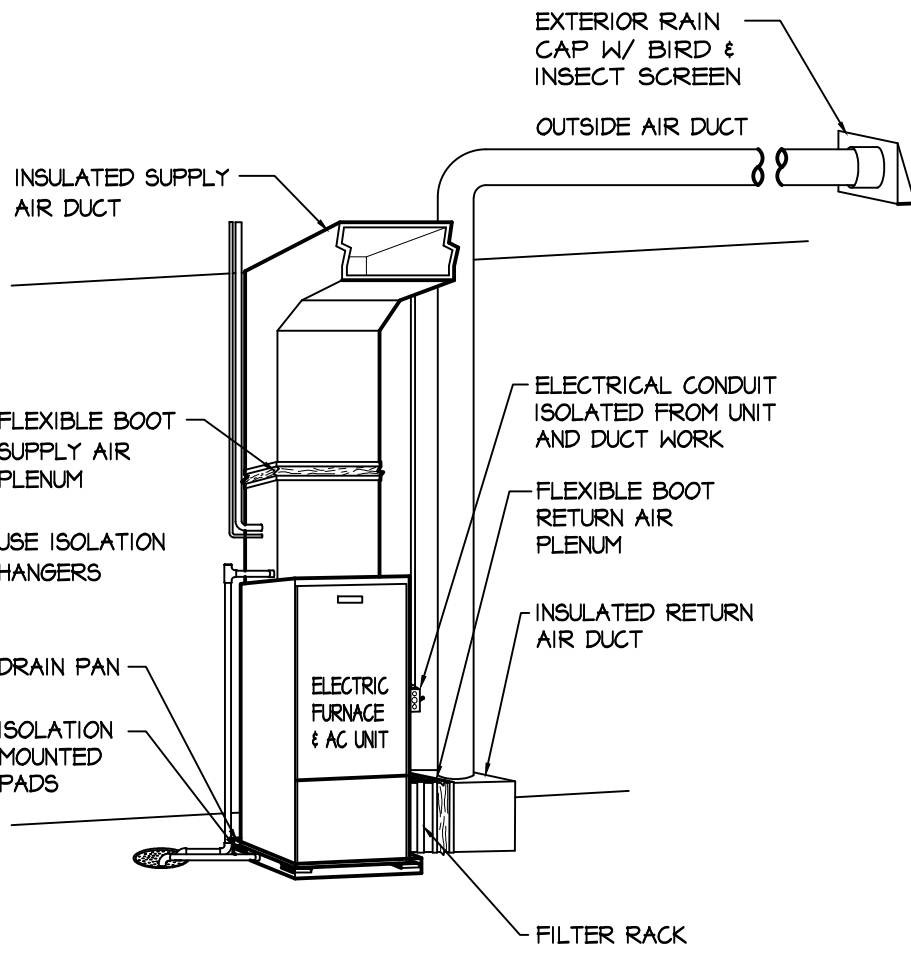
EQUIPMENT SCHEDULE

F1/G1 & F2/G2 SPLIT SYSTEM = 1400 CFM, 3.5 TON A/C, 90,000 BTU LP GAS HEAT, 92% EFF. W/ 8.3% - 116 CFM, EACH O.A., LO AMBIENT KIT. O.A. DUCT TO BE FITTED WITH AUTOMATIC DAMPER THAT WILL GO TO FULLY OPEN DURING "OCCUPIED" MODE AND FULLY CLOSED DURING "UNOCCUPIED" MODE.

EF = 75 CFM RESTROOM EXHAUST FANS & LIGHT COMBO VENTED TO THE EXTERIOR.

INSULATED RIGID DUCT

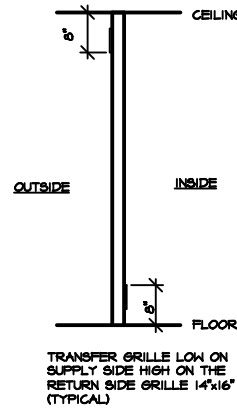
INSULATED FLEX DUCT



THE ABOVE REQUIREMENTS ARE ESSENTIAL TO THE INSTALLATION IN ORDER TO ISOLATE THE UNIT AND PREVENT ANY VIBRATION FROM BEING TRANSMITTED TO THE STRUCTURE.

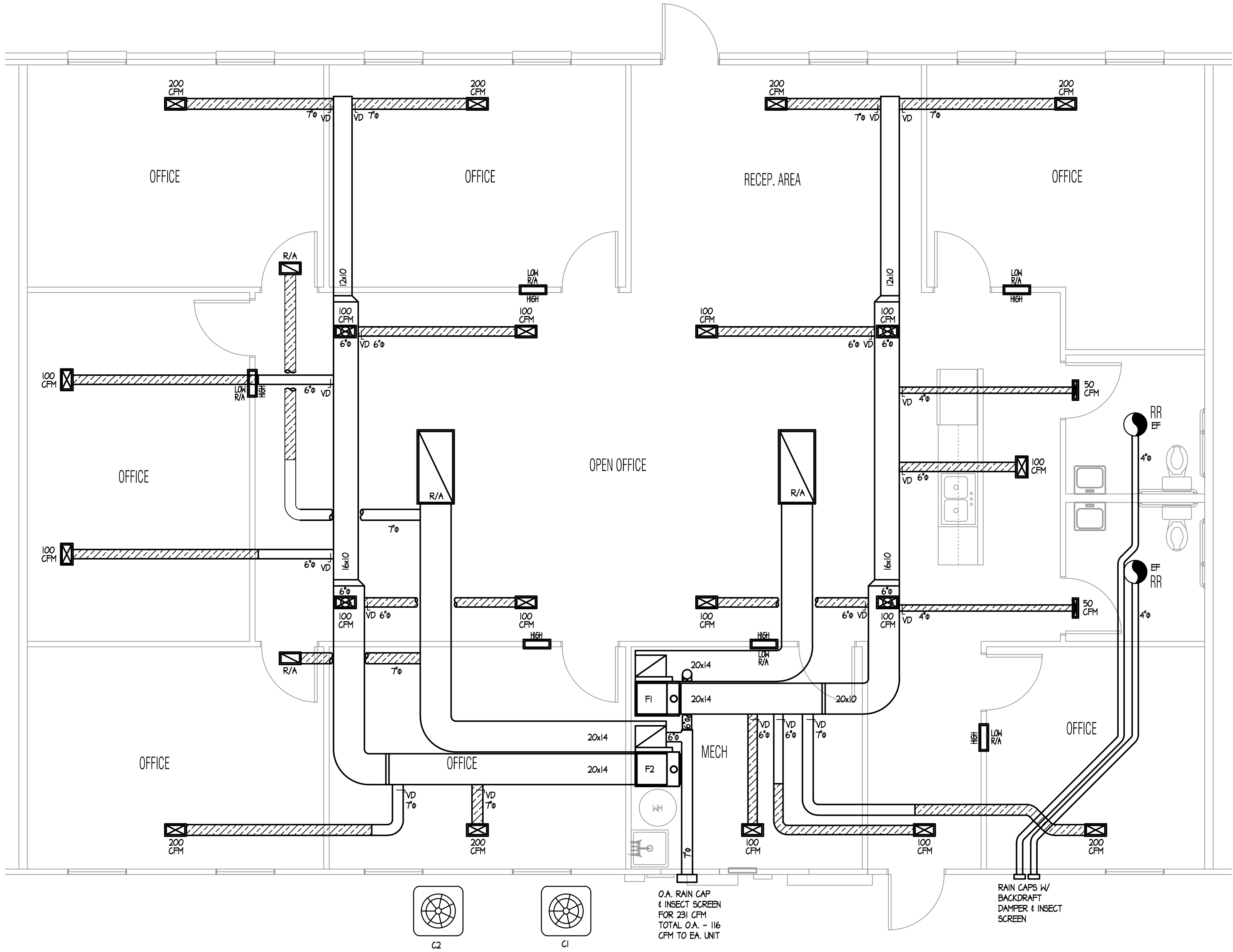
MAJOR INSTALLATION REQUIREMENTS

NOT TO SCALE



TRANSFER GRILLE DETAIL

NOT TO SCALE

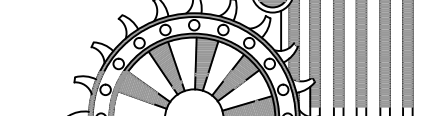


MECHANICAL PLAN

SCALE: 1/4"=1'-0"

HOFFMAN ENGINEERS P.C.

P.O. BOX 344
PINELAND, FLORIDA 33945
239-472-2547
FAX 239-472-2557
steve@hoffmanengineers.com



Hoffman Engineers Inc.
State of Indiana Certificate of Authority # 16188
"GLOBAL COMMITMENT WITH
A MAIN STREET ATTITUDE"

2504 VMP TENANT FINISH
2504 Veterans Memorial Parkway South
Lafayette, Indiana 47909

CONSTRUCTION DOCUMENT

PROFESSIONAL SEAL
STEPHEN C. HOFFMAN
REGISTERED
No. PE60016188
STATE OF INDIANA
PROFESSIONAL ENGINEER

STEPHEN C. HOFFMAN
Engineer
IN # PE60016188

DRAWN BY JAC

REVISIONS



MECHANICAL PLAN

PROJECT NO. SHEET NUMBER

DATE 5 Sept 17

M1

- THE ELECTRICAL CONTRACTOR SHALL CONSULT WITH THE LOCAL POWER COMPANY AND PROVIDE ALL MATERIALS AND LABOR AND PAY ALL COSTS AND FEES NOT BORNE BY THE LOCAL POWER COMPANY TO PROVIDE A COMPLETE ELECTRICAL SERVICE AS REQUIRED.
- ALL ELECTRICAL WORK SHALL BE PERFORMED IN STRICT ACCORDANCE WITH THE IBC, N.F.P.A. STANDARD NO. 70 (INDIANA ELECTRICAL CODE - IEC), LATEST EDITION WITH ADOPTED STATE AMENDMENTS, AND SHALL BE PERFORMED IN A GOOD WORKMANLIKE MANNER. WORK SHALL BE IN ACCORDANCE WITH ALL LOCAL CODES AND INSPECTIONS.
- NO CIRCUIT OR FEEDER SHALL EXCEED 3% VOLTAGE DROP.
- ANY CONDUCTORS RUNNING UNDERGROUND (SERVICE, FEEDERS, BRANCH CIRCUITS, ETC.) TO HAVE "WET LOCATION" RATING IN ACCORDANCE WITH THE REQUIREMENTS OF THE NEC, SECTION 310-8.
- ALL WIRING SHALL BE IN EMT CONDUIT, 100% COPPER, UNLESS OTHERWISE NOTED ON THE DRAWINGS. WIRES SHALL BE SIZED ACCORDING TO THE NEC ARTICLE 310-15.
- SPLICES SHALL BE MADE ONLY AT ACCESSIBLE LOCATIONS, OUTLET BOXES, PANELBOARDS, JUNCTION BOXES, ETC. APPROVED CONNECTIONS AND SPLICES IN ALL WIRE #6 AND LARGER SHALL BE MADE WITH TERMINAL SOLDERLESS CONNECTORS, PROPERLY INSULATED AND TAPED WHERE NECESSARY. IN SMALLER WIRES ALL SPLICES SHALL BE MADE EITHER WITH APPROVED SOLDERLESS CONNECTORS OR SHALL BE SOLDERED AND TAPED AS REQUIRED TO INSURE PROPER INSULATION.
- ELECTRICAL BOXES AND FITTINGS SHALL COMPLY WITH UL STANDARD #50, 514-SERIES AND 886 AND NEMA STANDARDS PUBLICATIONS #051, 052 AND PUBLICATION 250.
- WIRING DEVICES SHALL COMPLY WITH NEC, UL NO. 486, 498 AND 943, IEEE STANDARD 241 AND NEMA STANDARDS PUBLICATION NO. 14D1, 4D2 AND 4D5.
- RECEPTACLES SHALL BE GENERAL DUTY TYPE, 2-POLE, 3-WIRE, GROUNDED, 20 AMPS, 125 VOLTS. RECEPTACLES SHALL BE INSTALLED 18" ABOVE FINISH FLOOR, UNLESS OTHERWISE NOTED.
- SWITCHES SHALL BE GENERAL DUTY, 20 AMPS, 120-277 VOLTS.
- FIXTURE SUPPORTS SHALL BE PROVIDED IN ACCORDANCE WITH THE REQUIREMENTS OF THE NEC, ARTICLE 700.
- ALL EQUIPMENT SHALL BEAR THE UL LABEL AND BE INSTALLED ACCORDING TO THE LATEST EDITION OF THE NEC.
- SERVICE EQUIPMENT SHALL BE SUITABLE FOR SHORT-CIRCUIT CURRENT AVAILABLE AT ITS SUPPLY TERMINALS AS PER NEC ARTICLE 230-90.
- LIGHTING FIXTURES SHALL COMPLY WITH NEC, NEMA, UL AND IES (APPLICABLE ARTICLES).
- EMERGENCY MEANS OF EGRESS LIGHTING WITH BATTERY BACKUP POWER SHALL PROVIDE EMERGENCY ILLUMINATION FOR A DURATION OF NOT LESS THAN 15 HOURS MINIMUM, WITHOUT THE VOLTAGE APPLIED TO THE LOAD FALLING BELOW 87.5% OF NORMAL. LOCAL AUTHORITY SHALL FIELD VERIFY AND LOCATE ADDITIONAL FIXTURES IF NEEDED. PROVIDE LOCK-ON FEATURE ON CIRCUIT BREAKER.
- PROVIDE MANUFACTURER'S RECOMMENDED LAMPS FOR ALL FIXTURES AND CLEAN AND REPLACE BURNED OUT LAMPS AT SUBSTANTIAL COMPLETION.
- ELECTRICAL DEVICES SUCH AS SWITCHES, RECEPTACLES, ETC. THAT PENETRATE A FIREWALL, MUST BE IN ACCORDANCE WITH SECTION 711 OF THE IBC.
- ALL DISCONNECTS AND CIRCUIT BREAKERS SHALL BE MARKED FOR IDENTIFICATION.
- OPERATING HANDLE OF THE SWITCH OR CIRCUIT BREAKER, WHEN IN ITS HIGHEST POSITION, WILL NOT BE MORE THAN 6'-7" ABOVE THE FINISH FLOOR OR PLATFORM.
- PROVIDE A BONDING JUMPER AT THE WATER METER AND AT WATER HEATER.
- THE WORKING CLEARANCE FROM THE SIDE EDGE OF ALL ELECTRICAL EQUIPMENT HAS BEEN INCREASED FROM 30" TO 36".
- THE ELECTRICAL CONTRACTOR WILL PROVIDE DESIGN NUMBER AND MANUFACTURER'S CUT SHEET TO THE LOCAL BUILDING DEPARTMENT WHEN USING METHODS WHICH WILL PENETRATE THROUGH FIRE RESISTANT RATED WALLS, PARTITIONS, FLOORS, OR CEILINGS, AND INCLUDE APPROVED METHODS TO MAINTAIN THE RESISTANCE RATING.
- THE ELECTRICAL CONTRACTOR WILL NEED TO PROVIDE MANUFACTURER'S ELECTRICAL FIXTURE CUT SHEETS TO THE LOCAL BUILDING DEPARTMENT, IF REQUIRED.

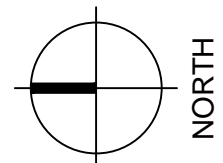
MAIN DISCONNECT BREAKERS
TO BE 50,000 A.I.C. RATED
ALL BREAKERS TO BE 10,000
A.I.C. RATED

<u>AMPS</u>	<u>WIRE SIZE</u>	<u>CONDUIT SIZE</u>
20A	#12	3/4"
25A	#10	3/4"
30A	#10	3/4"
35A	#8	1"
50A	#8	1"
60A	#6	1"
85A	#4	1 1/4"
100A	#3	1 1/2"
200A	#3/0 THHN	2"



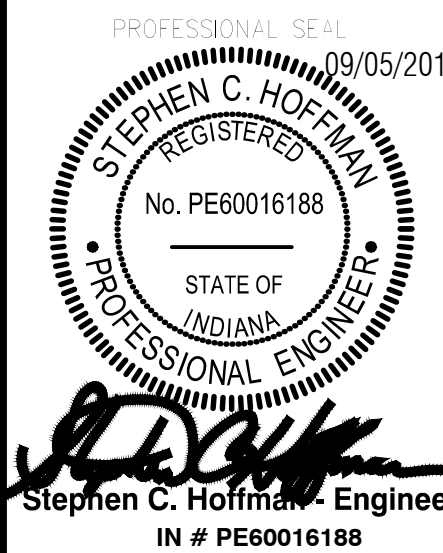
The floor plan illustrates the second floor layout with various rooms and electrical symbols. The rooms include OFFICE, RECEPTION AREA, OPEN OFFICE, MECH, and RR. Electrical symbols are numbered throughout the plan, indicating specific locations. The MECH room contains detailed equipment including F1, F2, WH, and EXTS. A note at the bottom indicates 'EXISTING SWITCH GEAR & TELEPHONE SERVICE'.

SCALE: 1/4"=1'-0"



2504 VMP TENANT FINISH
2504 Veterans Memorial Parkway South
Lafayette, Indiana 47909

PROFESSIONAL SEAL



REVISIONS

--	--

SHEET TITLE





PROJECT NO:	SHEET NUMBER
-------------	--------------

DATE
5 Sept 17

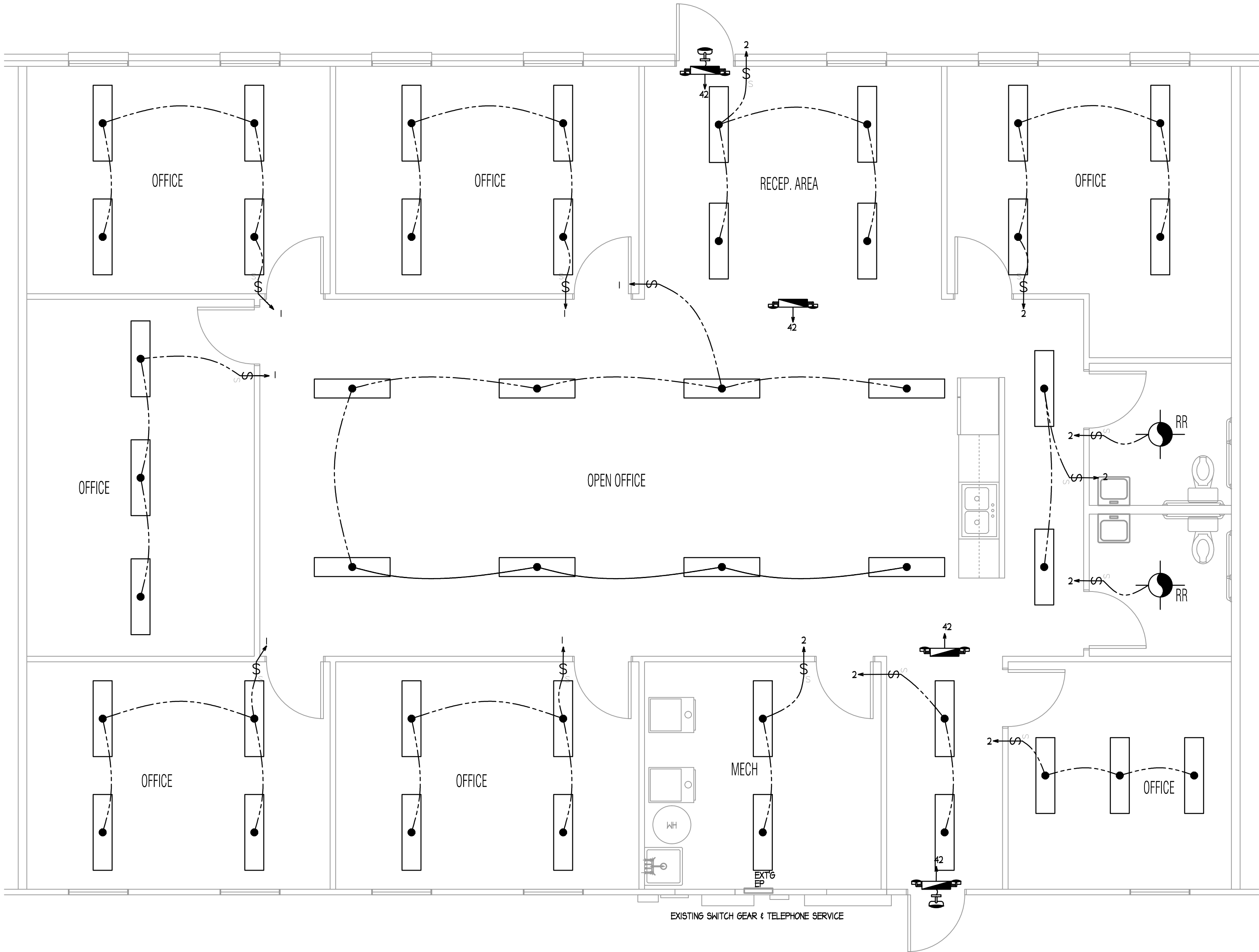
E1

ELECTRICAL GENERAL NOTES:

1. THE ELECTRICAL CONTRACTOR SHALL CONSULT WITH THE LOCAL POWER COMPANY AND PROVIDE ALL MATERIALS AND LABOR AND PAY ALL COSTS AND FEES NOT BORNE BY THE LOCAL POWER COMPANY TO PROVIDE A COMPLETE ELECTRICAL SERVICE AS REQUIRED.
2. ALL ELECTRICAL WORK SHALL BE PERFORMED IN STRICT ACCORDANCE WITH THE IBC, N.F.P.A. STANDARD NO. 70 (INDIANA ELECTRICAL CODE - IEC), LATEST EDITION, WITH ADOPTED STATE AMENDMENTS, AND SHALL BE PERFORMED IN A GOOD WORKMANLIKE MANNER. WORK SHALL BE IN ACCORDANCE WITH ALL LOCAL CODES AND INSPECTIONS.
3. NO CIRCUIT OR FEEDER SHALL EXCEED 3% VOLTAGE DROP.
4. ANY CONDUCTORS RUNNING UNDERGROUND (SERVICE, FEEDERS, BRANCH CIRCUITS, ETC.) TO HAVE "WET LOCATION" RATING IN ACCORDANCE WITH THE REQUIREMENTS OF THE NEC, SECTION 310-8.
5. ALL WIRING SHALL BE IN EMT CONDUIT, 100% COPPER, UNLESS OTHERWISE NOTED ON THE DRAWINGS. WIRES SHALL BE SIZED ACCORDING TO THE NEC ARTICLE 310-15.
6. SPLICES SHALL BE MADE ONLY AT ACCESSIBLE LOCATIONS, OUTLET BOXES, PANELBOARDS, JUNCTION BOXES, ETC. TERMINAL CONNECTIONS AND SPLICES IN ALL WIRE #6 AND LARGER SHALL BE MADE WITH APPROVED SOLDERLESS CONNECTORS, PROPERLY INSULATED AND TAPED WHERE NECESSARY. IN SMALLER WIRES ALL SPLICES SHALL BE MADE EITHER WITH APPROVED SOLDERLESS CONNECTORS OR SHALL BE SOLDERED AND TAPED AS REQUIRED TO INSURE PROPER INSULATION.
7. ELECTRICAL BOXES AND FITTINGS SHALL COMPLY WITH UL STANDARD #50, 514-SERIES AND 886 AND NEMA STANDARDS PUBLICATIONS #051, 052 AND PUBLICATION 250.
8. WIRING DEVICES SHALL COMPLY WITH NEC, UL 20, 486A, 498 AND 943, IEEE STANDARD 241 AND NEMA STANDARDS PUBLICATION NO. WD1, WD2 AND WDS.
9. RECEPTACLES SHALL BE GENERAL DUTY TYPE, 2-POLE, 3-WIRE, GROUNDED, 20 AMPS, 125 VOLTS. RECEPTACLES SHALL BE INSTALLED 18" ABOVE FINISH FLOOR, UNLESS OTHERWISE NOTED.
10. SWITCHES SHALL BE GENERAL DUTY, 20 AMPS, 120-277 VOLTS.
11. FIXTURE SUPPORTS SHALL BE PROVIDED IN ACCORDANCE WITH THE REQUIREMENTS OF THE NEC, ARTICLE 700.
12. ALL EQUIPMENT SHALL BEAR THE UL LABEL AND BE INSTALLED ACCORDING TO THE LATEST EDITION OF THE NEC.
13. SERVICE EQUIPMENT SHALL BE SUITABLE FOR SHORT-CIRCUIT CURRENT AVAILABLE AT ITS SUPPLY TERMINALS AS PER NEC ARTICLE 230-90.
14. LIGHTING FIXTURES SHALL COMPLY WITH NEC, NEMA, UL AND IES (APPLICABLE ARTICLES).
15. EMERGENCY MEANS OF EGRESS LIGHTING WITH BATTERY BACKUP POWER SHALL PROVIDE EMERGENCY ILLUMINATION FOR A DURATION OF NOT LESS THAN 1.5 HOURS MINIMUM WITHOUT THE VOLTAGE APPLIED TO THE LOAD FALLING BELOW 87.5% OF NORMAL. LOCAL AUTHORITY SHALL FIELD VERIFY AND LOCATE ADDITIONAL FIXTURES IF NEEDED. PROVIDE LOCK-ON FEATURE ON CIRCUIT BREAKER.
16. PROVIDE MANUFACTURER'S RECOMMENDED LAMPS FOR ALL FIXTURES AND CLEAN AND REPLACE BURNED OUT LAMPS AT SUBSTANTIAL COMPLETION.
17. ELECTRICAL DEVICES SUCH AS SWITCHES, RECEPTACLES, ETC. THAT PENETRATE A FIREWALL, MUST BE IN ACCORDANCE WITH SECTION 711 OF THE IBC.
18. ALL DISCONNECTS AND CIRCUIT BREAKERS SHALL BE MARKED FOR IDENTIFICATION.
19. OPERATING HANDLE OF THE SWITCH OR CIRCUIT BREAKER, WHEN IN ITS HIGHEST POSITION, WILL NOT BE MORE THAN 6'-7" ABOVE THE FINISH FLOOR OR PLATFORM.
20. PROVIDE A BONDING JUMPER AT THE WATER METER AND AT WATER HEATER.
21. THE WORKING CLEARANCE FROM THE SIDE EDGE OF ALL ELECTRICAL EQUIPMENT HAS BEEN INCREASED FROM 30" TO 36".
22. THE ELECTRICAL CONTRACTOR WILL PROVIDE DESIGN NUMBER AND MANUFACTURER'S CUT SHEETS TO THE LOCAL BUILDING DEPARTMENT WHEN WIRING METHODS, WHICH WILL PENETRATE THROUGH FIRE RESISTANT RATED WALLS, PARTITIONS, FLOORS, OR CEILINGS, AND INCLUDE APPROVED METHODS TO MAINTAIN THE RESISTANCE RATINGS.
23. THE ELECTRICAL CONTRACTOR WILL NEED TO PROVIDE MANUFACTURER'S ELECTRICAL FIXTURE CUT SHEETS TO THE LOCAL BUILDING DEPARTMENT, IF REQUIRED.

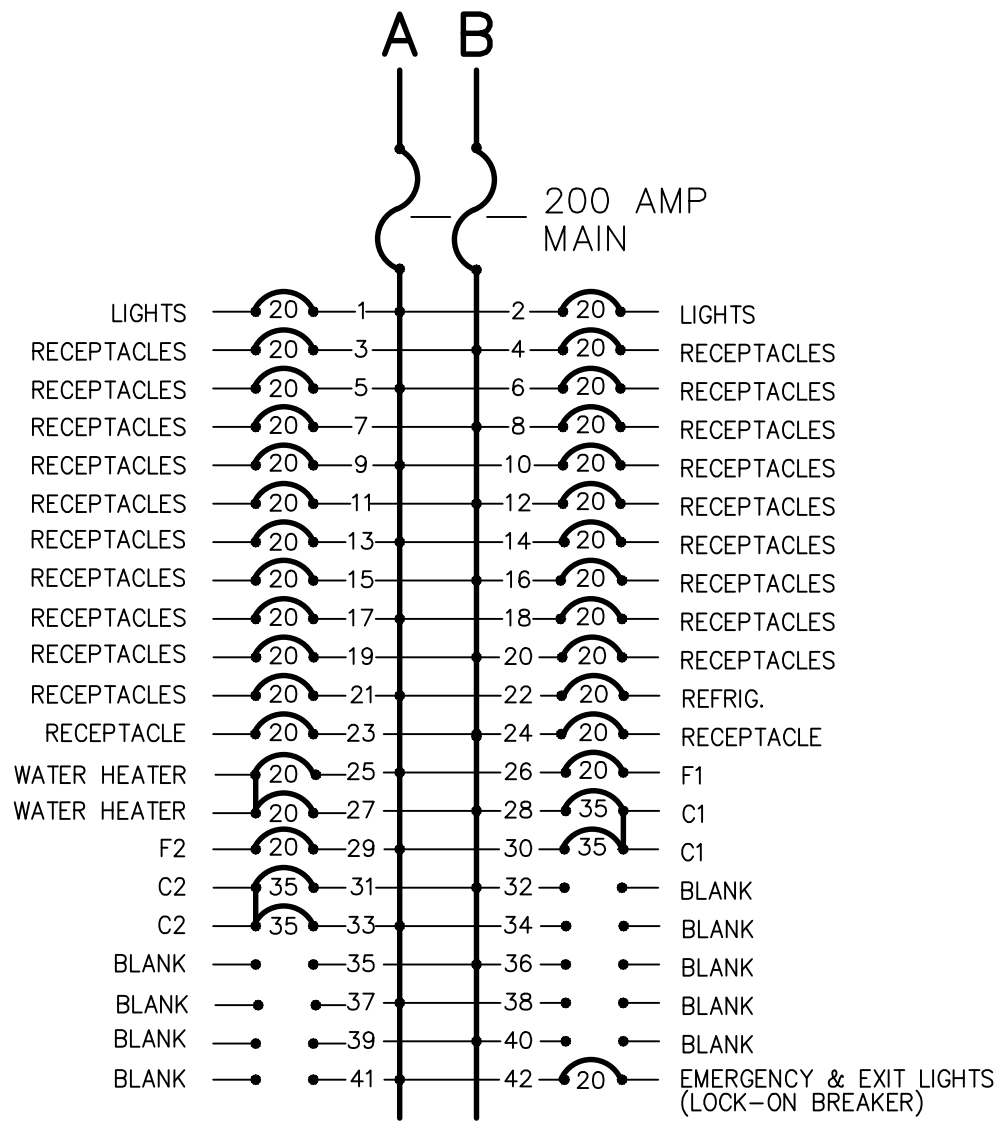
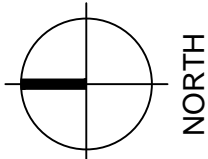
LIGHT FIXTURE SYMBOL LEGEND & SCHEDULE	
	4' - LED WRAPAROUND SURFACE MOUNT LIGHT FIXTURE.
	COMBINATION 75 CFM MIN. RR EXHAUST FAN (VENTED TO THE EXTERIOR) & 11 WATT FLUORESCENT LIGHT FIXTURE. EXHAUST FAN TO RUN 15 MIN. AFTER OCCUPANCY.
	SELF-POWERED EMERGENCY EXIT LIGHT W/ DUAL HEAD EMERGENCY LIGHTING & CHARGER WITH EMERGENCY BATTERY BACKUP FOR A DURATION OF NOT LESS THAN 1 1/2 HOURS.
	SELF-POWERED EMERGENCY EXIT LIGHT W/ DUAL HEAD & REMOTE EXTERIOR HEAD (NEAR THE DOOR) EMERGENCY LIGHTING & CHARGER WITH EMERGENCY BATTERY BACKUP FOR A DURATION OF NOT LESS THAN 1 1/2 HOURS.

ELECTRICAL SYMBOL LEGEND	
SWITCHES	
\$	SINGLE POLE SWITCH
\$3	3-WAY SWITCH
\$4	4-WAY SWITCH
\$D	DIMMER SWITCH
\$S	OCCUPANCY SENSOR SWITCH



ELECTRICAL LIGHTING PLAN

SCALE: 1/4"=1'-0"



ELECTRICAL PANEL

120/240 1Ø 200 AMP

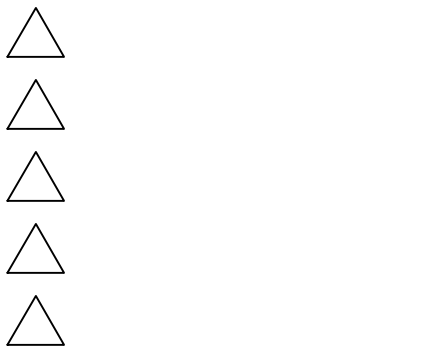
2504 VMP TENANT FINISH
2504 Veterans Memorial Parkway South
Lafayette, Indiana 47909

CONSTRUCTION
DOCUMENT



DRAWN BY: JAC

REVISIONS



SHEET TITLE
ELECTRICAL
LIGHTING PLAN

PROJECT NO: SHEET NUMBER

DATE
5 Sept 17

E2