

# Fibernet Bldg C

1159 & 1161 S 800 E  
Garden Level Orem, Utah

## Office Sublease

Lease Rate:

**\$15.00** psf

Modified Gross

Power and Gas not included

Contact:

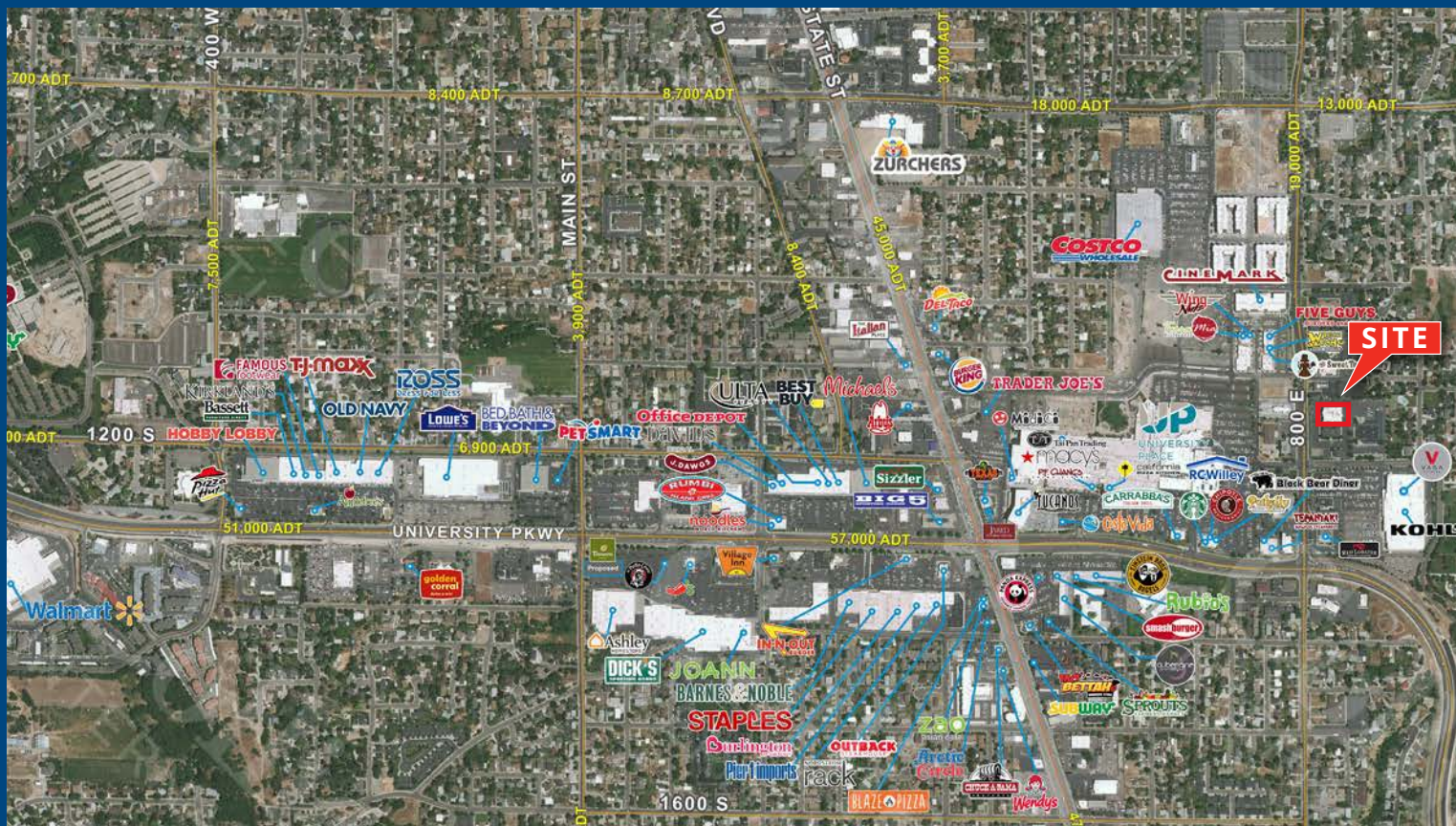
**Dan Donaldson**  
Executive Vice President  
+1 801 836 3600  
dan.donaldson@colliers.com

### Project Features

- Premier Orem Location Between BYU & UVU
- Convenient Freeway Access
- Furniture Available
- Newly Remodeled Lobby / Common Area
- Garden Level Exits into an Exterior Courtyard
- Excellent Internet Services
- Wireless Services
- Colocation / Data Center
- On Site Tech Support
- Ample Parking (5/1,000 SQ FT.)

**Lease Rate: \$15.00 PSF Modified Gross**  
Power and Gas not included

**Available: 3,930 SF**



**Colliers**  
2100 Pleasant Grove Blvd., Suite 200  
Pleasant Grove, UT 84062  
Main: +1 801 947 8300  
colliers.com

**Dan Donaldson**  
Executive Vice President  
+1 801 836 3600  
dan.donaldson@colliers.com



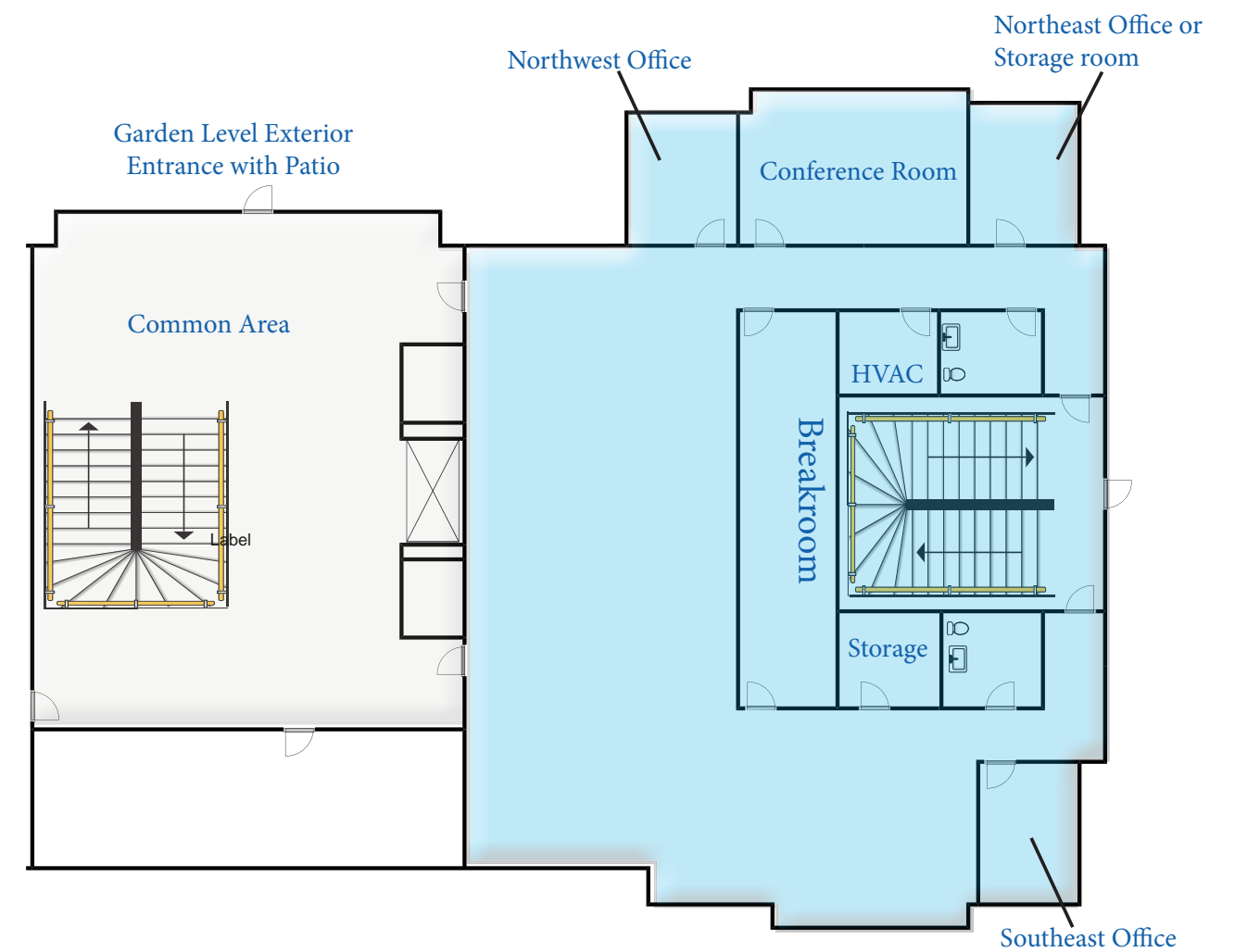
# FIBERNET

## BLDG C

### Garden Level Office For Sublease

Garden Level - 3,930 SF

- 3 offices, conference room, break room and storage room



Colliers

**Dan Donaldson**  
Executive Vice President  
+1 801 836 3600  
dan.donaldson@colliers.com

This document has been prepared by Colliers International for advertising and general information only. Colliers International makes no guarantees, representations or warranties of any kind, expressed or implied, regarding the information including, but not limited to, warranties of content, accuracy and reliability. Any interested party should undertake their own inquiries as to the accuracy of the information. Colliers International excludes unequivocally all inferred or implied terms, conditions and warranties arising out of this document and excludes all liability for loss and damages arising therefrom. This publication is the copyrighted property of Colliers International and/or its licensor(s). ©2025 All rights reserved.