



# 14D VAN DYKE AVENUE

## NEW BRUNSWICK, NJ

21,000 SF  
FOR LEASE

 **WAREHOUSE**

## PROPERTY HIGHLIGHTS:

- Near major commercial arteries
- Ports of Newark and Elizabeth within 30 minutes
- Newark Airport within 30 minutes
- Port of Philadelphia within 1 hour
- The Brunswick Industrial Center is located in a Foreign Trade Zone and Urban Enterprise Zone where qualified businesses can receive a 50% sales tax reduction on some retail purchases, 100% sales tax reduction on purchases made by the qualified business and workforce training assistance.



**EXCLUSIVE AGENTS:**

**JON FREEMAN**

JFREEMAN@WICKCOMPANIES.COM  
732.750.4444

**NICK CARACAPPA**

NCARACAPPA@WICKCOMPANIES.COM  
609.578.0824





**14D VAN DYKE AVENUE**  
NEW BRUNSWICK, NJ

**21,000 SF  
FOR LEASE**

# PROPERTY INFORMATION

## BUILDING SIZE:

21,000 SF

## OFFICE:

1,000 SF

## PARKING:

Ample Parking for *Cars*  
Parking for *Trailers* against building

## ZONING:

1-2 General Industrial

## CEILING HEIGHT:

+/- 35' - 45' (28'-0" clear to underside of crane way)

## LOADING FACILITIES:

- Two (2) Interior loading docks
- Eight (8) Drive-in doors

## COLUMN SPACING:

75x25

## SPRINKLER:

Dry system throughout

## ELECTRIC:

1,200 amps

## POSSESSION:

Immediate

## ASKING RENT:

Call For Details



**EXCLUSIVE AGENTS:**

**JON FREEMAN**

JFREEMAN@WICKCOMPANIES.COM  
732.750.4444

**NICK CARACAPPA**

NCARACAPPA@WICKCOMPANIES.COM  
609.578.0824



EXCLUSIVE BROKER • 100 WOODBRIDGE CENTER DRIVE, WOODBRIDGE, NJ 07095





**14D VAN DYKE AVENUE**  
NEW BRUNSWICK, NJ

**21,000 SF  
FOR LEASE**



**EXCLUSIVE AGENTS:**

**JON FREEMAN**

JFREEMAN@WICKCOMPANIES.COM  
732.750.4444

**NICK CARACAPPA**

NCARACAPPA@WICKCOMPANIES.COM  
609.578.0824



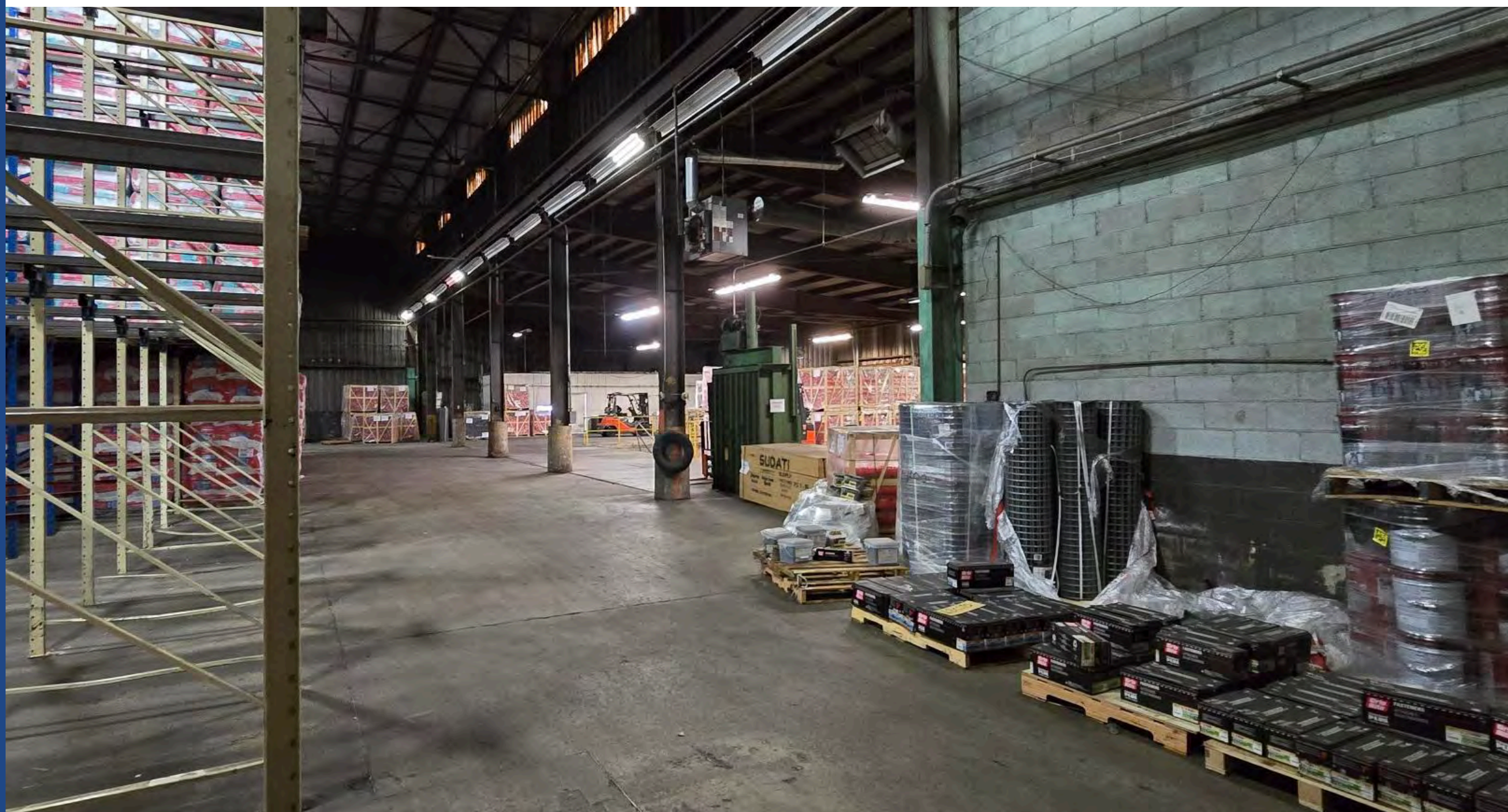
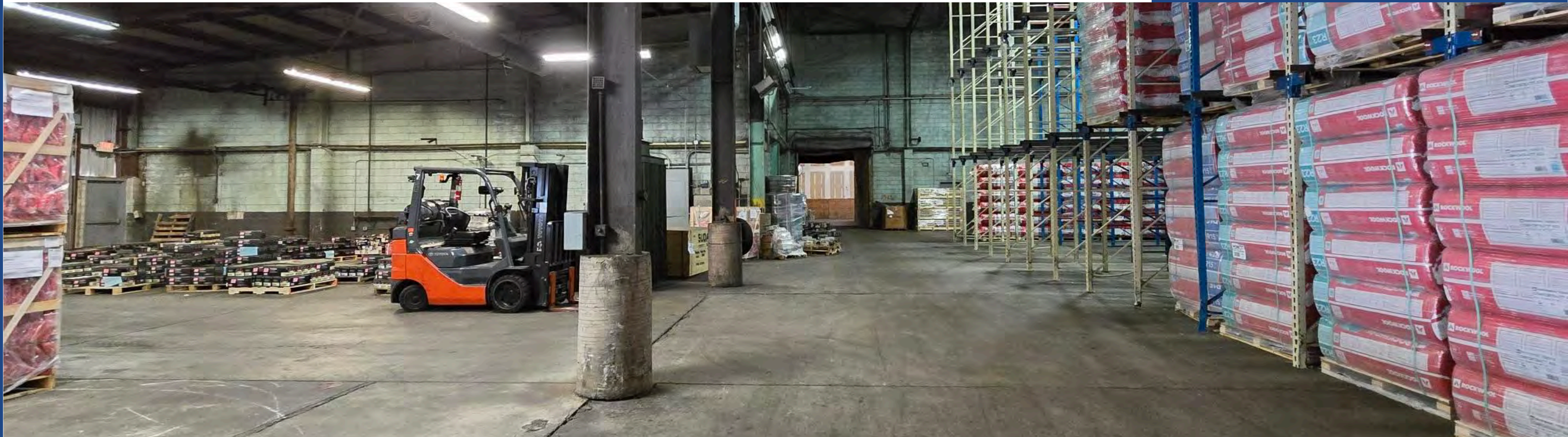
EXCLUSIVE BROKER • 100 WOODBRIDGE CENTER DRIVE, WOODBRIDGE, NJ 07095





**14D VAN DYKE AVENUE**  
NEW BRUNSWICK, NJ

**21,000 SF  
FOR LEASE**



**EXCLUSIVE AGENTS:**

**EEMAN**

JFREEMAN@WICKCOMPANIES.COM  
732.750.4444

**NICK CARACAPPA**

NCARACAPPA@WICKCOMPANIES.COM  
609.578.0824



EXCLUSIVE BROKER • 100 WOODBRIDGE CENTER DRIVE, WOODBRIDGE, NJ 07095

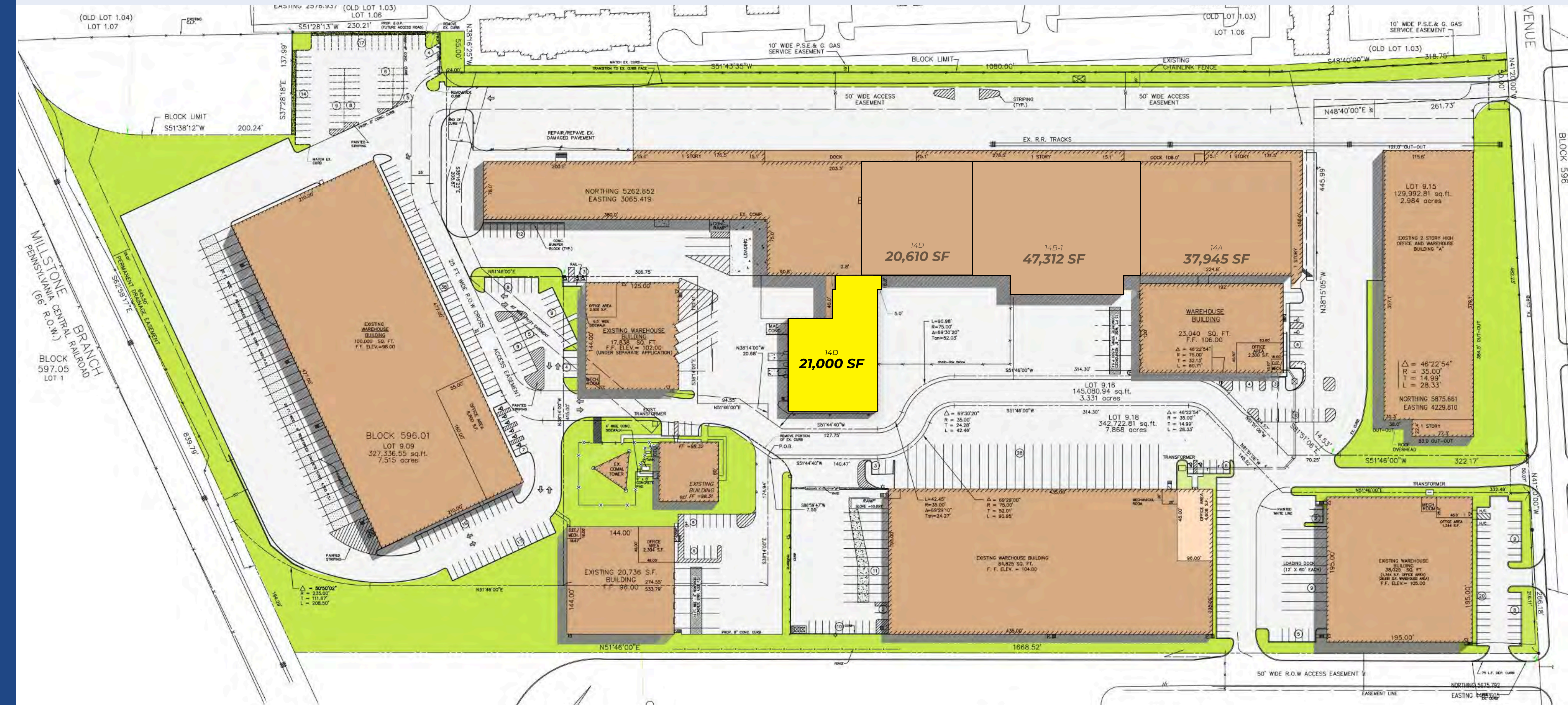




**14D VAN DYKE AVENUE**  
NEW BRUNSWICK, NJ

**21,000 SF  
FOR LEASE**

# SITE PLAN



**EXCLUSIVE AGENTS:**

**JON FREEMAN**

JFREEMAN@WICKCOMPANIES.COM  
732.750.4444

**NICK CARACAPPA**

NCARACAPPA@WICKCOMPANIES.COM  
609.578.0824



EXCLUSIVE BROKER • 100 WOODBRIDGE CENTER DRIVE, WOODBRIDGE, NJ 07095





**14D VAN DYKE AVENUE**  
NEW BRUNSWICK, NJ

**21,000 SF  
FOR LEASE**

# TRAVEL & TENANTS MAP



## TRAVEL ROUTES:

Close proximity to Exit 9 of the NJ Turnpike, Exits 4 & 2A/B of I-287, and Routes 1, 9 and 27. Walking distance to the Jersey Avenue NJ Transit Train Station.



## AREA TENANTS:

Near Rutgers University and major employers including J&J World Headquarters, Bristol-Myers Squibb, and Robert Wood Johnson University Hospital. In addition, currently under construction is the HELIX which is the largest investment in life sciences and medical education in the State with Nokia Bell Labs already committed for 350,000 square feet of R&D facilities.



## EXCLUSIVE AGENTS:

**JON FREEMAN**

JFREEMAN@WICKCOMPANIES.COM  
732.750.4444

**NICK CARACAPPA**

NCARACAPPA@WICKCOMPANIES.COM  
609.578.0824



EXCLUSIVE BROKER • 100 WOODBRIDGE CENTER DRIVE, WOODBRIDGE, NJ 07095

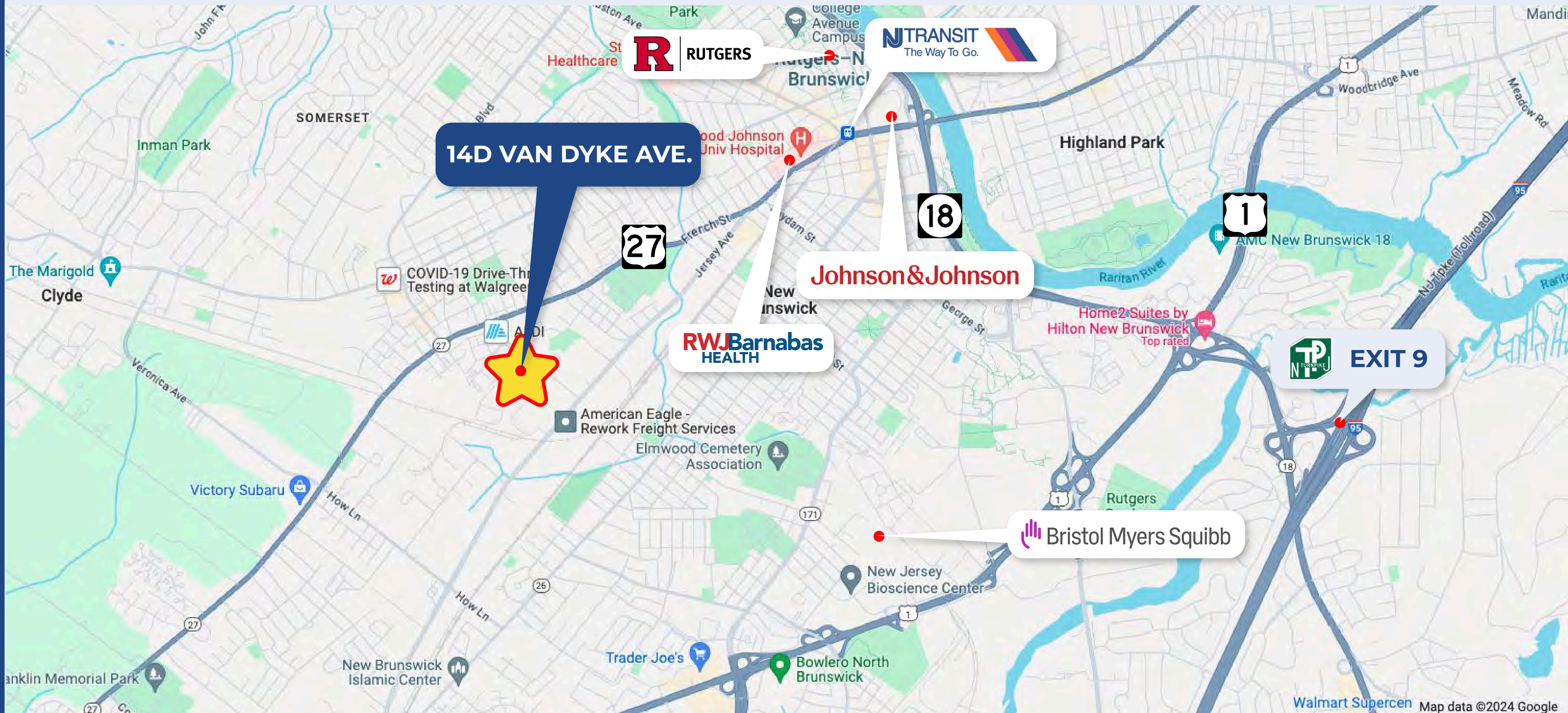




**14D VAN DYKE AVENUE**  
NEW BRUNSWICK, NJ

**21,000 SF  
FOR LEASE**

## LOCATION MAP



**EXCLUSIVE AGENTS:**

**JON FREEMAN**

JFREEMAN@WICKCOMPANIES.COM  
732.750.4444

**NICK CARACAPPA**

NCARACAPPA@WICKCOMPANIES.COM  
609.578.0824



EXCLUSIVE BROKER • 100 WOODBRIDGE CENTER DRIVE, WOODBRIDGE, NJ 07095

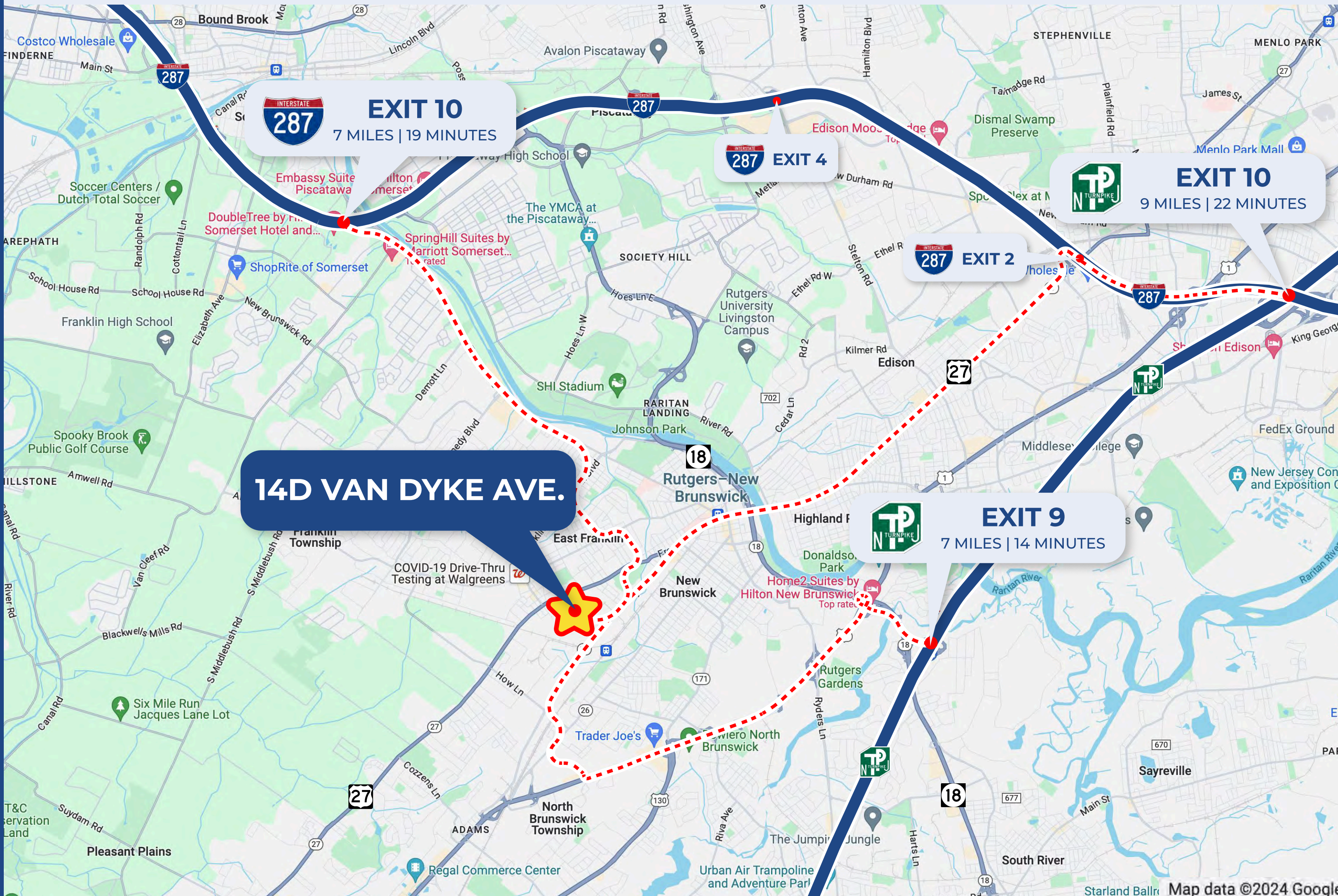




14D VAN DYKE AVENUE  
NEW BRUNSWICK, NJ

21,000 SF  
FOR LEASE

# ACCESS MAP & LABOR STATISTICS



## LABOR MARKET

Middlesex County has the highest labor force per square mile in the State. New Brunswick has a prominent workforce with a large labor supply of unskilled and semi-skilled workers.

### NONAGRICULTURAL WORKFORCE

1,009,200

Size of New Brunswick's nonagricultural workforce.

### WAREHOUSE EMPLOYEES

15%

Increase in the workforce over the past five years.

\$19.57

Hourly wages on average.

### FORKLIFT DRIVERS

15%

Increase in the workforce over the past five years.

\$22.10

Hourly wages on average.



## EXCLUSIVE AGENTS:

JON FREEMAN

JFREEMAN@WICKCOMPANIES.COM  
732.750.4444

NICK CARACAPPA

NCARACAPPA@WICKCOMPANIES.COM  
609.578.0824



EXCLUSIVE BROKER • 100 WOODBRIDGE CENTER DRIVE, WOODBRIDGE, NJ 07095





## CONTACT OUR EXCLUSIVE AGENTS:

---

**JON FREEMAN**

JFREEMAN@WICKCOMPANIES.COM

732.750.4444

**NICK CARACAPPA**

NCARACAPPA@WICKCOMPANIES.COM

609.578.0824



LICENSED REAL ESTATE BROKER

100 WOODBRIDGE CENTER DRIVE  
WOODBRIDGE, NJ 07095  
732.750.4444

FOR MORE INFORMATION VISIT:  
[WICKCOMPANIES.COM](http://WICKCOMPANIES.COM)