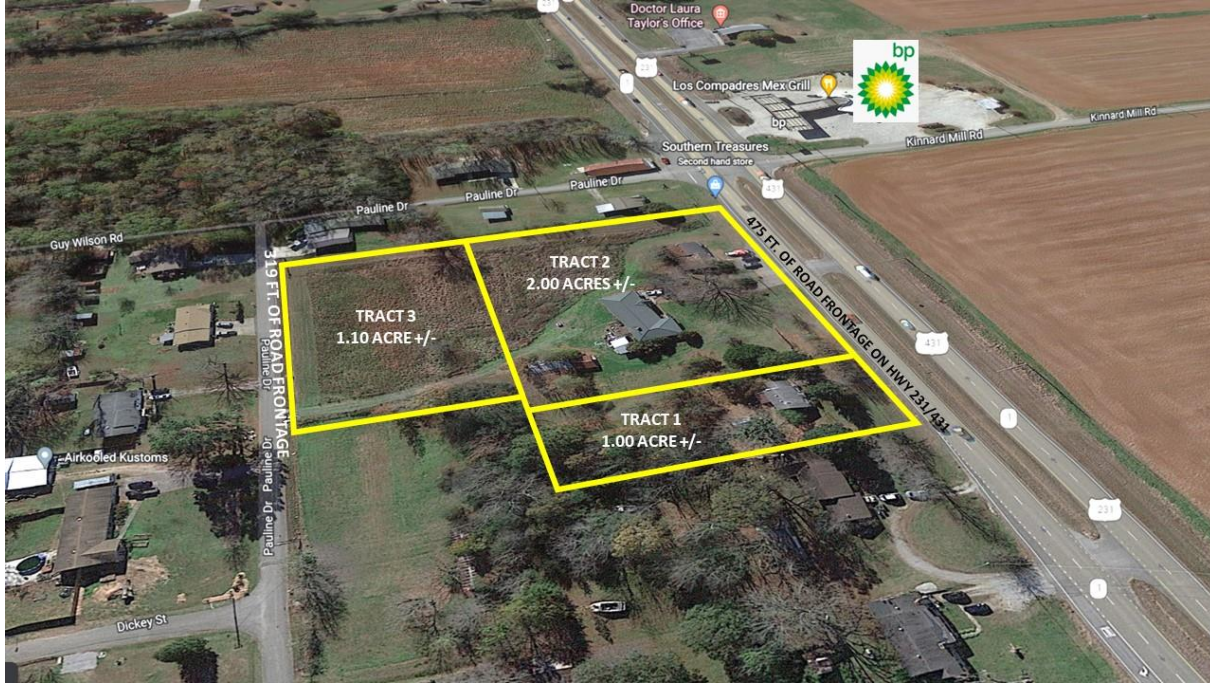




COMMERCIAL REAL ESTATE

# 13808 HIGHWAY 231/431 N. HAZEL GREEN, AL



**DESCRIPTION:** 4.1 ACRES+/- OF COMMERCIAL PROPERTY FOR SALE IN HAZEL GREEN, AL. 2 HOUSES AND 1 RETAIL STORE INCLUDED ON 3 TRACTS.

**LOCATION:** FROM BOB WADE LANE ON NORTH MEMORIAL PARKWAY, GO APPROX. 8.2 MILES NORTH. SUBJECT PROPERTIES ON THE RIGHT JUST PAST PAULINE DRIVE.

**LAND SIZE(S):** TRACT 1: 1.00 ACRES+/-  
TRACT 2: 2.00 ACRES+/-  
TRACT 3: 1.10 ACRES+/-

**SURVEY:** SEE REVERSE SIDE

**ZONING:** COUNTY

**SALE PRICE:** \$1,200,000

**CONTACT:** **RUSS RUSSELL, CCIM, ALC, CEA ♦ 256-536-7777**

**FOR OUR MOST UP TO DATE PROPERTY INFORMATION PLEASE VISIT [RUSSRUSSELL.COM](http://RUSSRUSSELL.COM).**

This property is subject to prior sale or removal from the market without notice. All information shown in this brochure, while based upon information supplied by the owners and from other sources deemed reliable, is not, in any way, warranted by Russ Russell Commercial Real Estate.



**Ranger Russell**  
Madison County's *First*  
Named Real Estate Drone



Huntsville's First CCIM



Huntsville's First ALC



Huntsville's First CEA



**Ruff Russell**  
America's *First and ONLY*  
Real Estate Mascot

923-C Merchants Walk • Huntsville, AL 35801 • (256) 536-7777

Fax: (256) 536-7710 • Website: [russrussell.com](http://russrussell.com)

