



kw McKee **WORKS**
KELLERWILLIAMS

Office/Flex Space

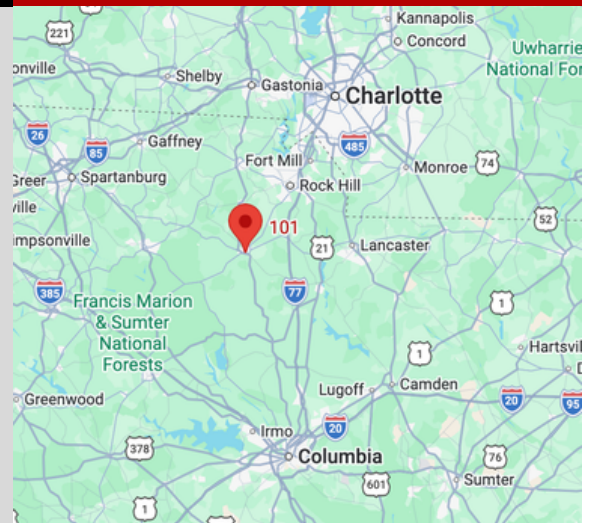
117 Main St, Chester, SC 29706



Downtown Office/Flex Space

FOR SALE

- Parcel # 201-11-07-005-000
- 2450 SF building located in growing Downtown area of Chester, SC
- Zoned CC - Commercial Core in City of Chester
- Some ideal uses: Personal services (salons), professional services (legal, engineering), and business services, upper story residential
- 51 miles to Charlotte-Douglas Int'l Airport, 49 miles to Uptown Charlotte, 60 miles to Columbia, SC



TARA MCKEE
803.627.8650
TARA@MCKEEWORKS.COM

\$250,000

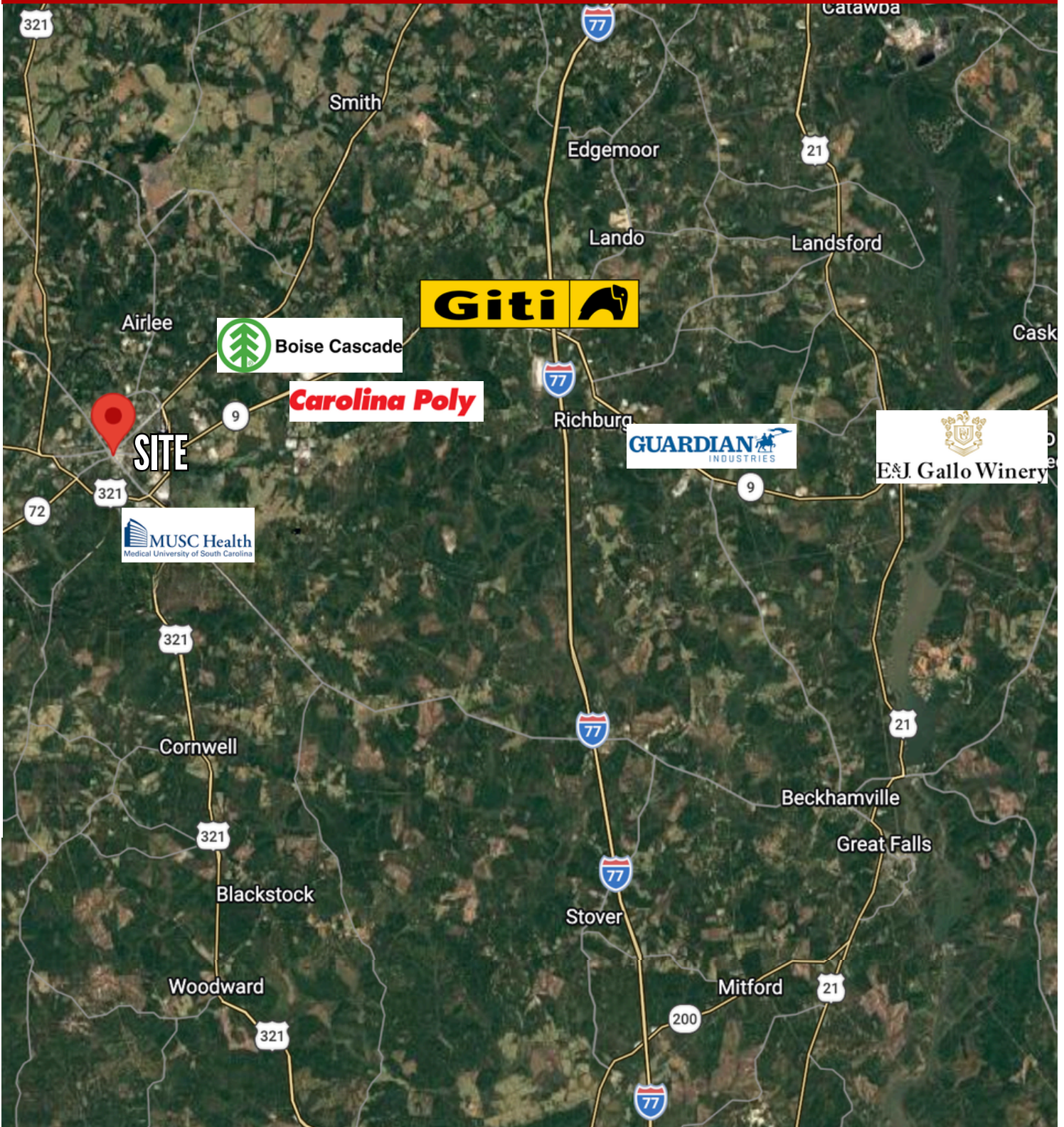


kw McKee **WORKS**
KELLERWILLIAMS.

Office/Flex Space

117 Main St, Chester, SC 29706

Aerial Location Map





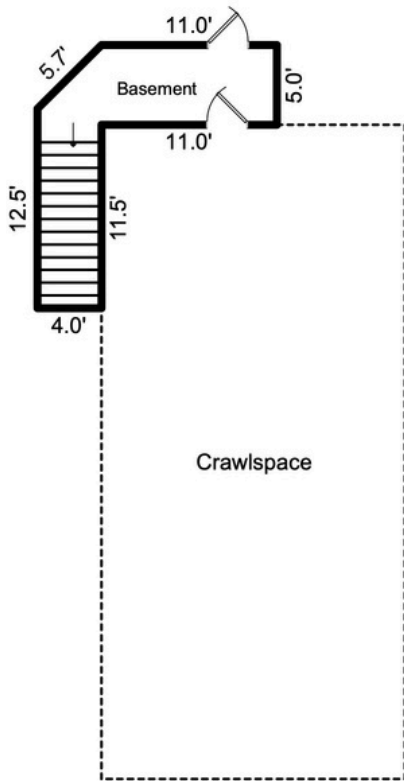
kw McKee **WORKS**
KELLERWILLIAMS.

OFFICE/FLEX SPACE

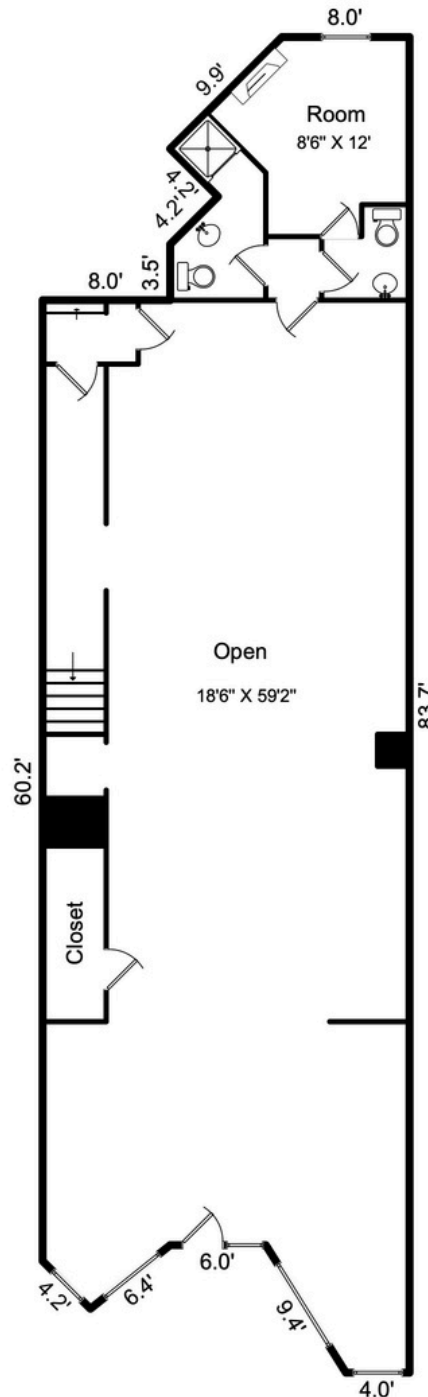
117 Main St, Chester, SC 29706

Floor Plan

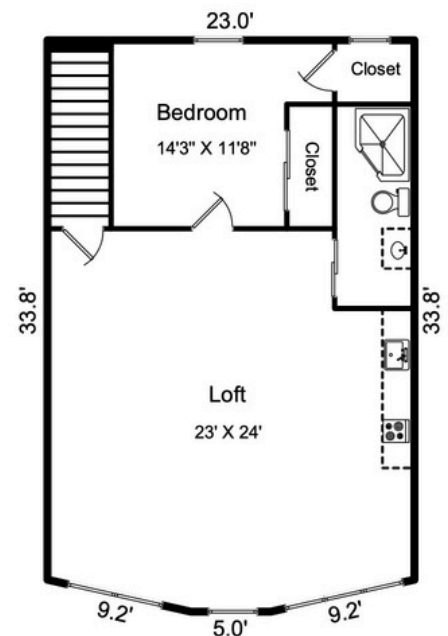
2450.5 sf HLA



Unfinished Basement
113sf



First Floor
1645.1sf



Second Floor
805.4sf