



5,000 SF medical condo for sale!

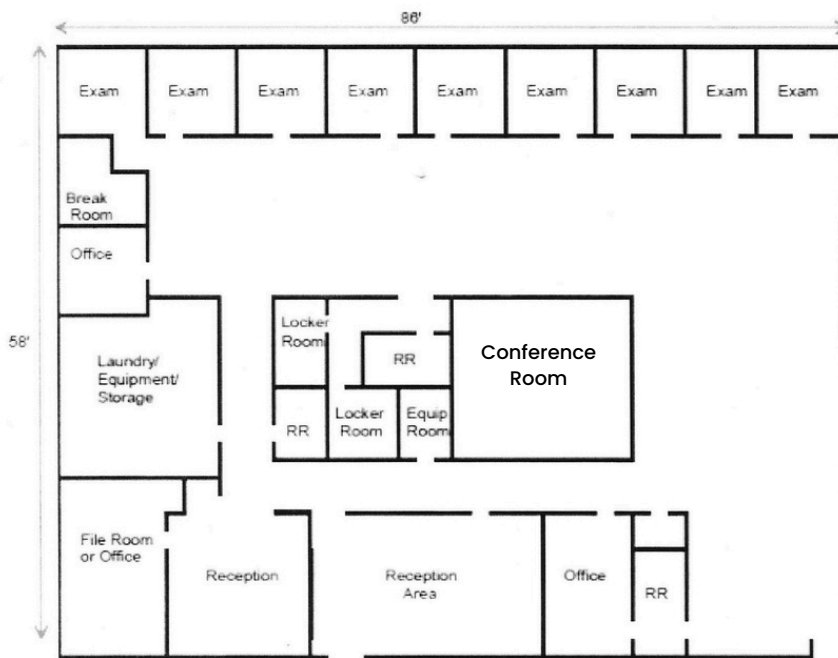


- ✓ Convenient location with front door parking and easy access to Silas Creek Parkway and Stratford Road
- ✓ Less than a mile from Novant Medical Center
- ✓ Brand new HVAC unit
- ✓ Below tax value
- ✓ Association dues: \$590/month

**REDUCED: \$425,000**

Cindy Christopher  
336.926.1411  
1080 West Fourth Street. Winston-Salem, NC  
Cindy@ChristopherCommercialNC.com





# Maps

