

GREYSTONE PROFESSIONAL CENTER

2025 FRONTIS PLAZA

WINSTON-SALEM | NORTH CAROLINA



REED GRIFFITH
704-619-0473
reed@FlagshipHP.com

FOR LEASE

PROPERTY OVERVIEW

PROPERTY OVERVIEW

- A 4-story Class "A" building located just off of Hanes Mall Boulevard
- Less than 1 mile from Novant Health's Forsyth Medical Center
- This prime location, near the I-40 / Hwy 158 interchange is a great opportunity for a variety of prospective tenants
- Ample parking, abundant amenities, ease of accessibility, signage opportunity, and proximity to a variety of medical practices

CONTACT:

REED GRIFFITH
704-619-0473
reed@FlagshipHP.com



TOTAL BUILDING AREA:
± 50,128 SF



AVAILABLE SPACE:
Suite 200: ± 14,395 SF
Suite 310: ± 2,476 SF



LEASE RATE:
\$19.50/SF



PARKING:
5/1,000 SF



LEASE TYPE:
NNN



YEAR BUILT:
1998

FLOOR PLAN - SUITE 200

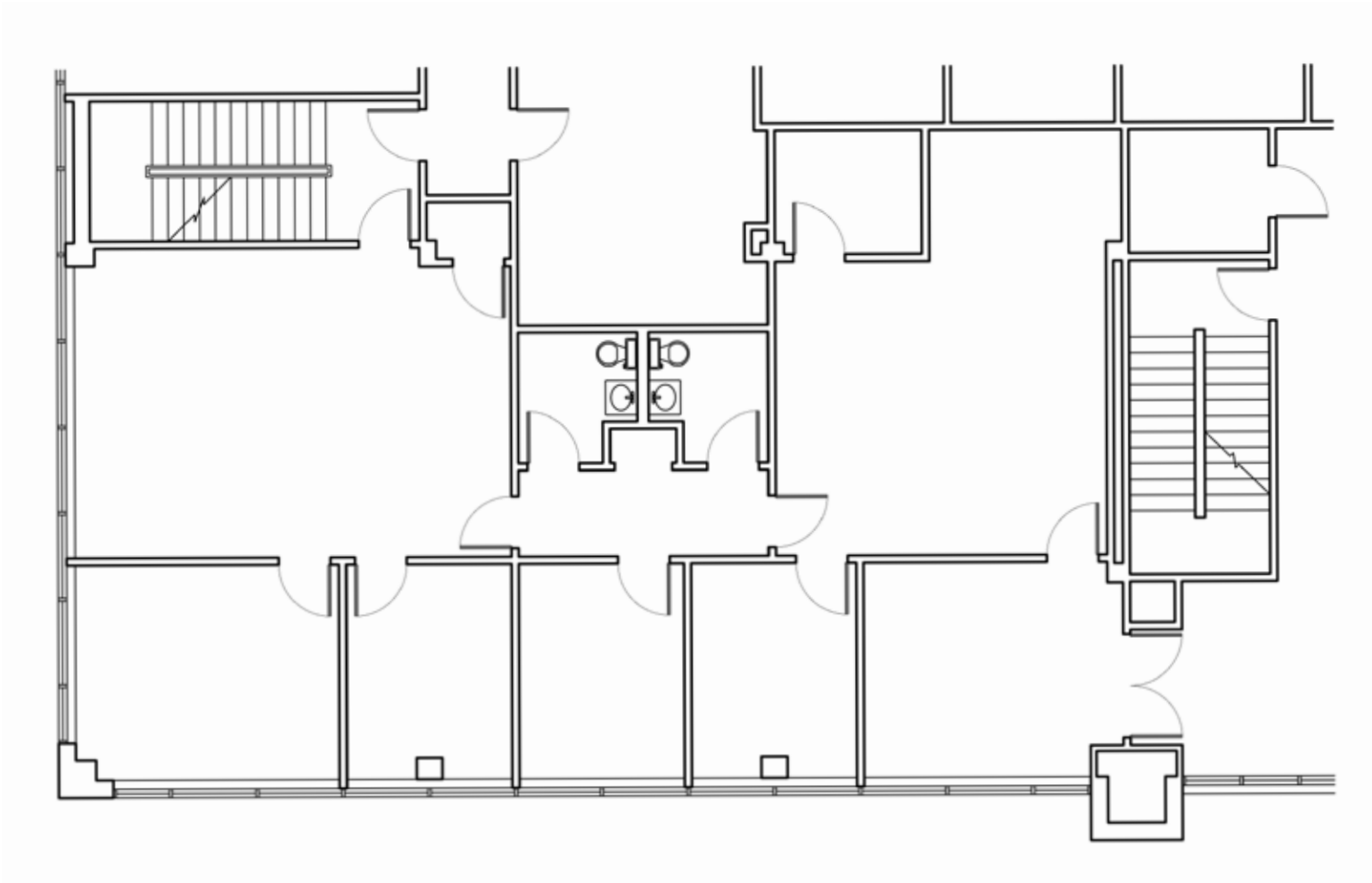
Suite 200
14,395 SF

VIRTUAL TOUR



FLOOR PLAN - SUITE 310

Suite 310
2,476 SF



AREA MAP

