



300 E Michigan Ave

Lansing, Michigan 48933

Property Highlights

- Onsite Parking available
- Immediate access to the Capitol building, Lansing Convention Center, and River Trail
- Flexible sizing from 10,350 to 43,875 SF
- Close proximity to Jackson Field, dining, and shopping
- Fantastic city views

Offering Summary

Lease Rate:	\$18 SF/yr (Gross plus Utilities and Janitorial)
Building Size:	38,700 SF
Available SF:	10,350 - 43,875 SF

Spaces	Lease Rate	Space Size
Lower Level	\$18.00 SF/yr	10,350 - 43,875 SF
1st Floor	\$18.00 SF/yr	10,903 - 43,875 SF
2nd Floor	\$18.00 SF/yr	11,322 - 43,875 SF
3rd Floor	\$18.00 SF/yr	11,300 - 43,875 SF

For More Information



Jeffrey Branch

Associate Broker

O: 517 487 9222 | C: 517 899 6368

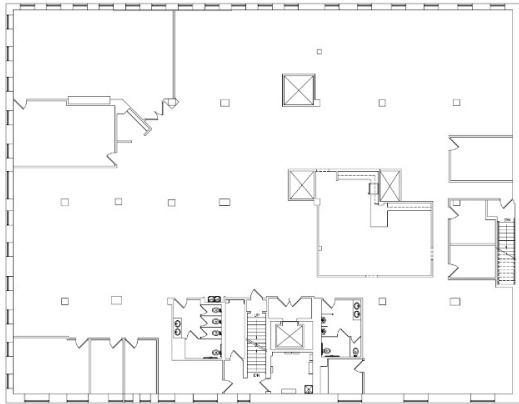
jbranch@naimidmichigan.com



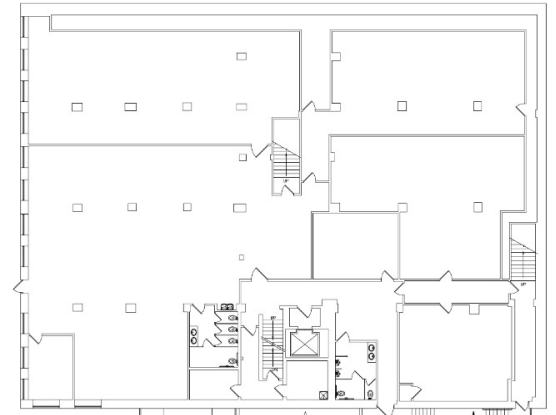
NO WARRANTY OR REPRESENTATION, EXPRESS OR IMPLIED, IS MADE AS TO THE ACCURACY OF THE INFORMATION CONTAINED HEREIN, AND THE SAME IS SUBMITTED SUBJECT TO ERRORS, OMISSIONS, CHANGE OF PRICE, RENTAL OR OTHER CONDITIONS, PRIOR SALE, LEASE OR FINANCING, OR WITHDRAWAL WITHOUT NOTICE, AND OF ANY SPECIAL LISTING CONDITIONS IMPOSED BY OUR PRINCIPALS NO WARRANTIES OR REPRESENTATIONS ARE MADE AS TO THE CONDITION OF THE PROPERTY OR ANY HAZARDS CONTAINED THEREIN ARE INTENDED TO BE IMPLIED

2149 Jolly Road, Suite 200
Okemos, MI 48864
517 487 9222 tel
naimidmichigan.com

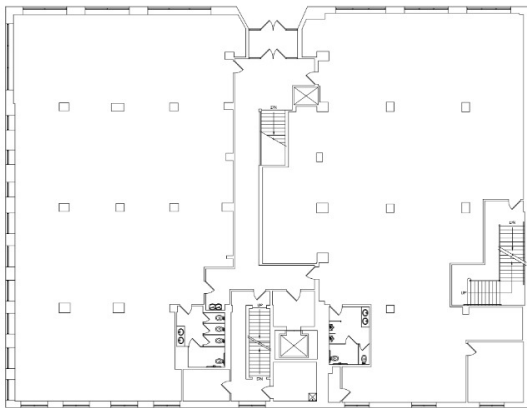




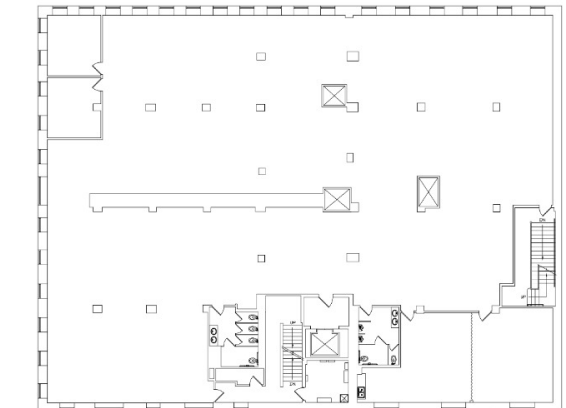
300 E. MICHIGAN AVENUE - EXISTING THIRD FLOOR PLAN
SCALE: 3/32" = 1'-0"



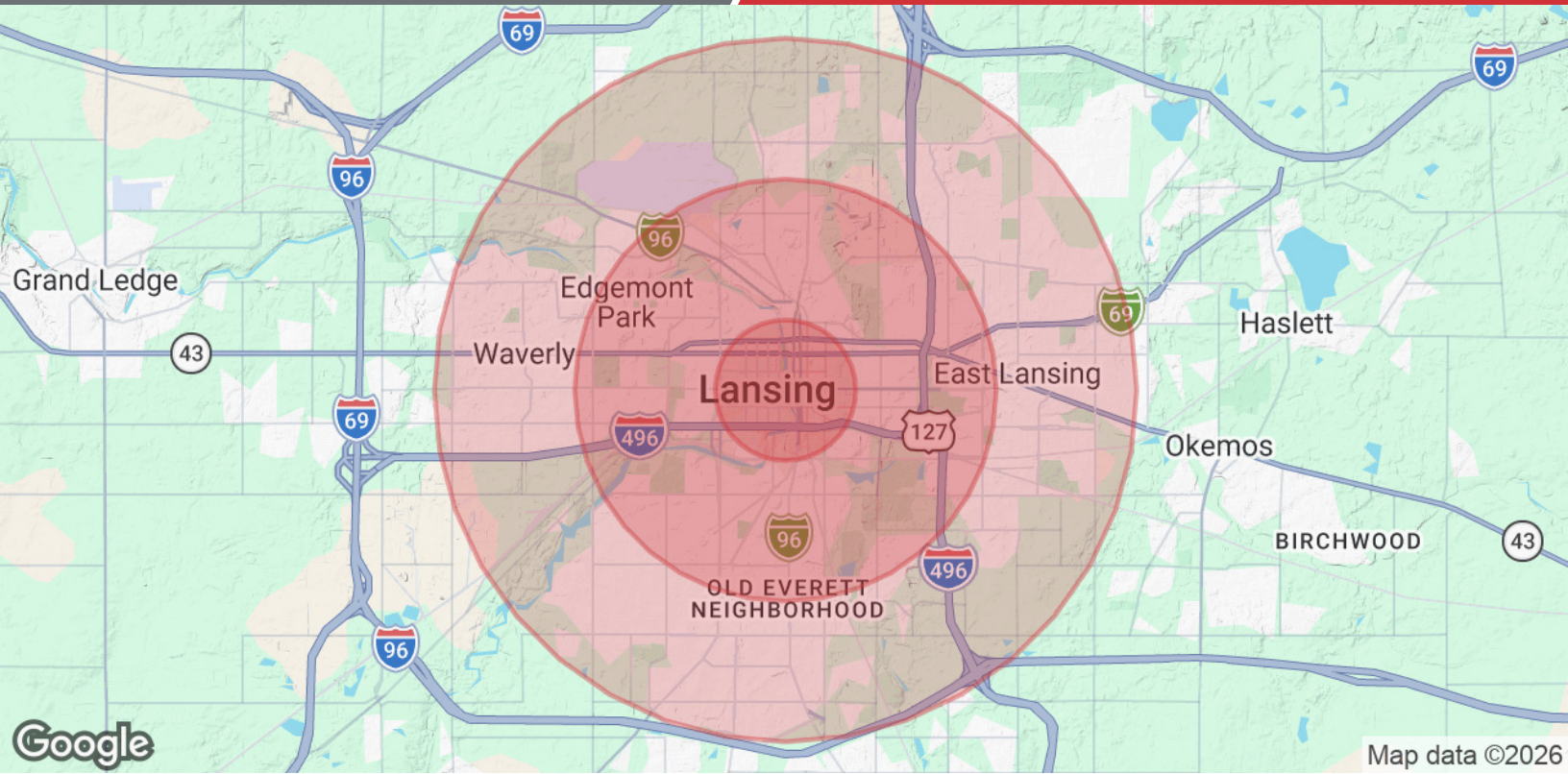
300 E. MICHIGAN AVENUE - EXISTING GROUND FLOOR PLAN
SCALE: 3/32" = 1'-0"



300 E. MICHIGAN AVENUE - EXISTING FIRST FLOOR PLAN
SCALE: 3/32" = 1'-0"



300 E. MICHIGAN AVENUE - EXISTING SECOND FLOOR PLAN
SCALE: 3/32" = 1'-0"



Population	1 Mile	3 Miles	5 Miles
Total Population	12,186	88,711	189,728
Average Age	30.2	34.5	33.9
Average Age (Male)	30.6	33.3	32.9
Average Age (Female)	30.9	36.2	35.6
Households & Income	1 Mile	3 Miles	5 Miles
Total Households	6,351	39,841	80,112
# of Persons per HH	1.9	2.2	2.4
Average HH Income	\$52,436	\$70,314	\$71,908
Average House Value	\$116,803	\$143,067	\$168,404

2023 American Community Survey (ACS)