

NEW SPACES
NEW AMENITIES
GREAT OPPORTUNITIES



5750 NEW KING drive

TROY, MICHIGAN

For more information, contact:

DAVE MILLER

(248) 948 4183

dmiller@signatureassociates.com

JOHN BOYD

(248) 948 0102

jboyd@signatureassociates.com



**SIGNATURE
ASSOCIATES**

KNOW SIGNATURE | KNOW RESULTS



PROPERTY SUMMARY

FOR LEASE

Suite 210 4,820 sq. ft. –
ready-to-occupy space, corner suite, furnished with up to 40 workstations

Suite 330 5,000-9,182 sq. ft. –
ready-to-occupy space as furnished or easily modified, with great views overlooking the pond

Building conference room

Electric car charging

Ample, over 4/1000 sq. ft., parking

Welcoming, 3-story skylight atrium

Bright white marble features

Self-serve café

Serviced by new restaurants and amenities nearby

Recently renovated

On-site management

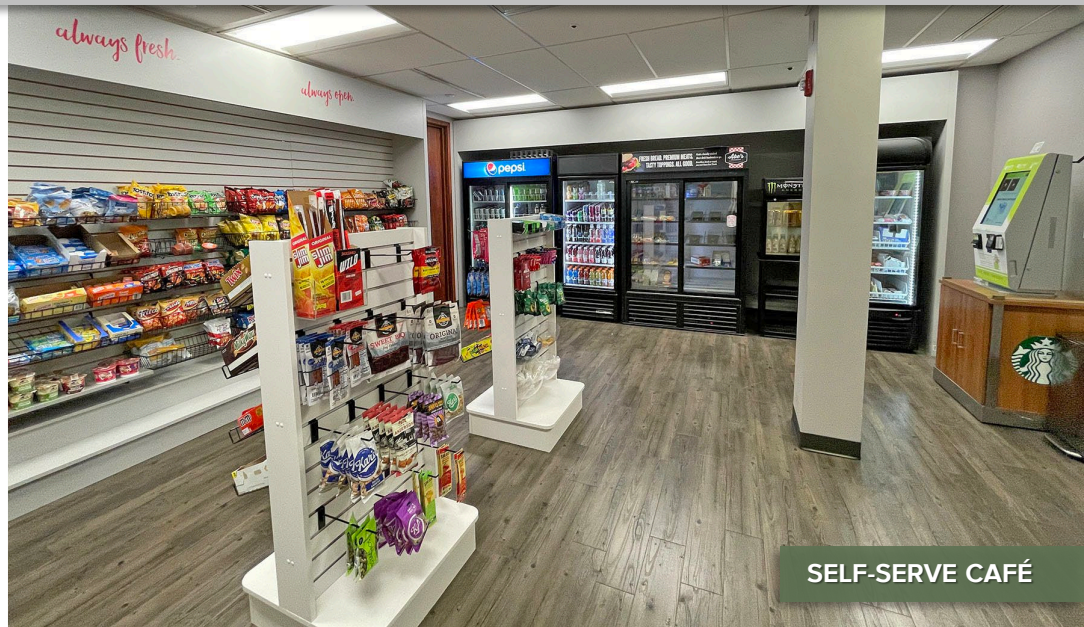
Very aggressive rates



COMMON AREAS



3-STORY SKYLIGHT ATRIUM

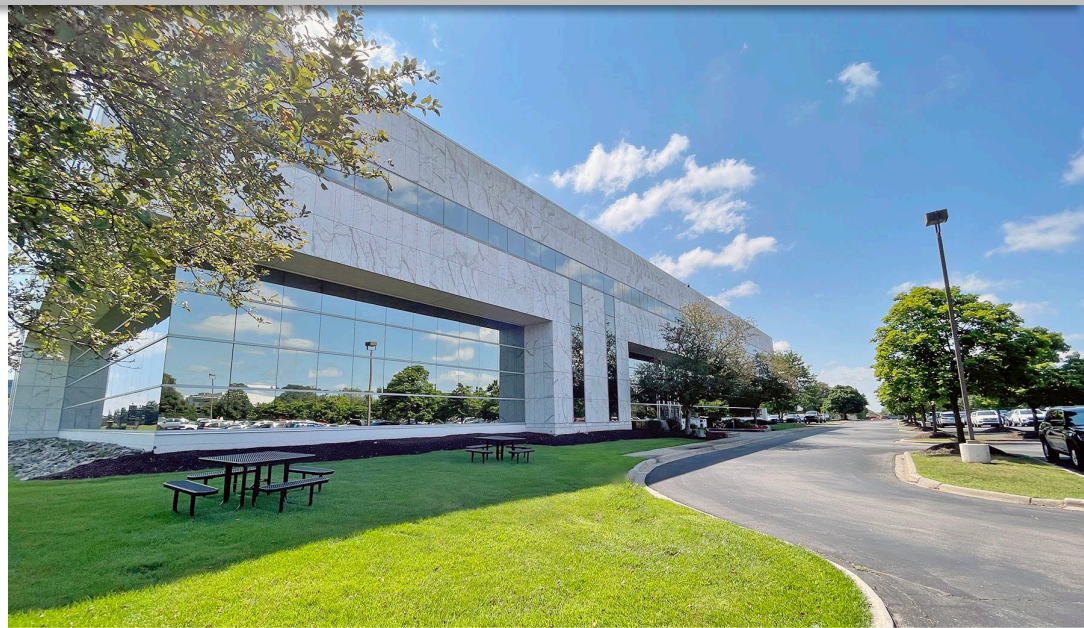


SELF-SERVE CAFÉ



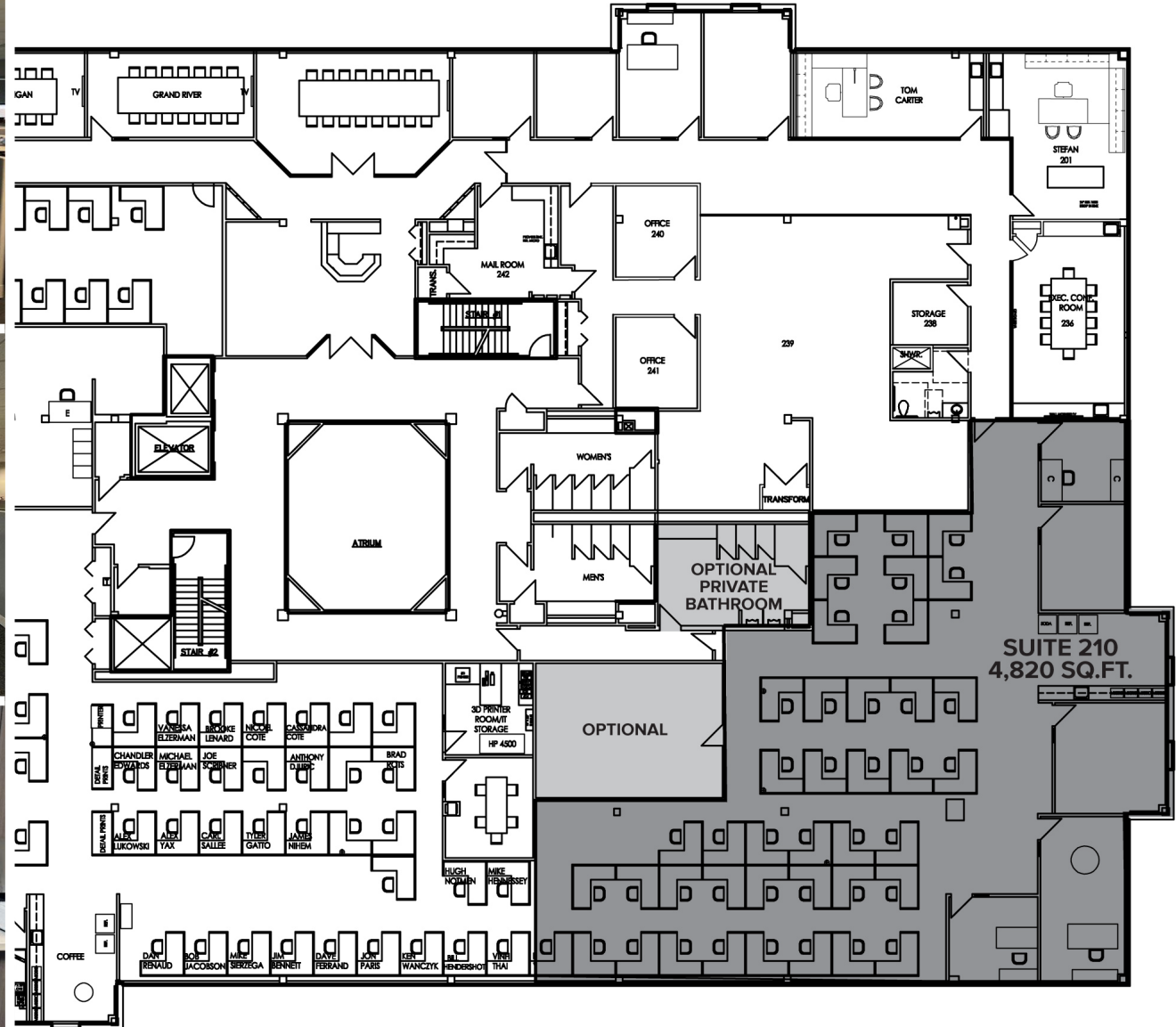
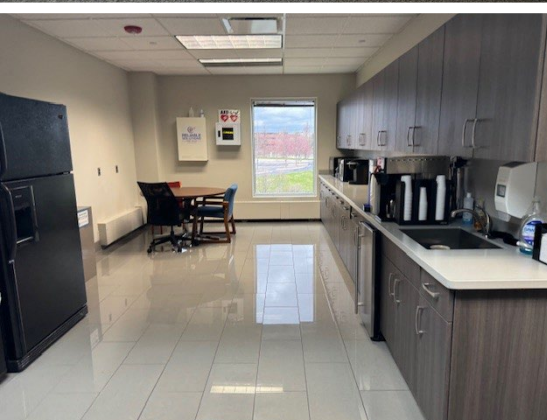
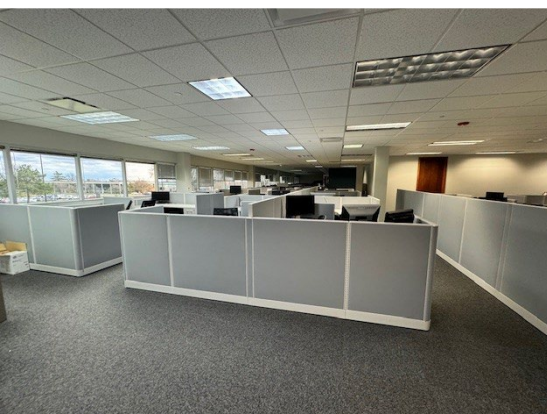
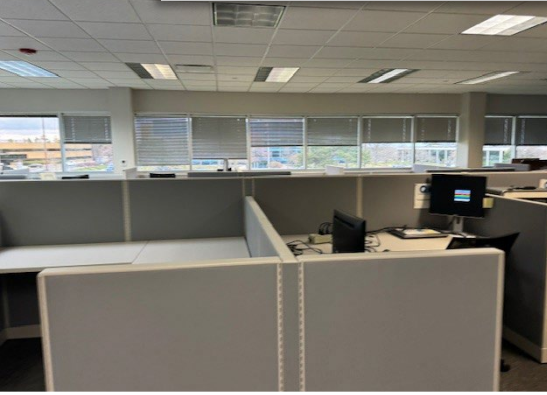


Exterior photos



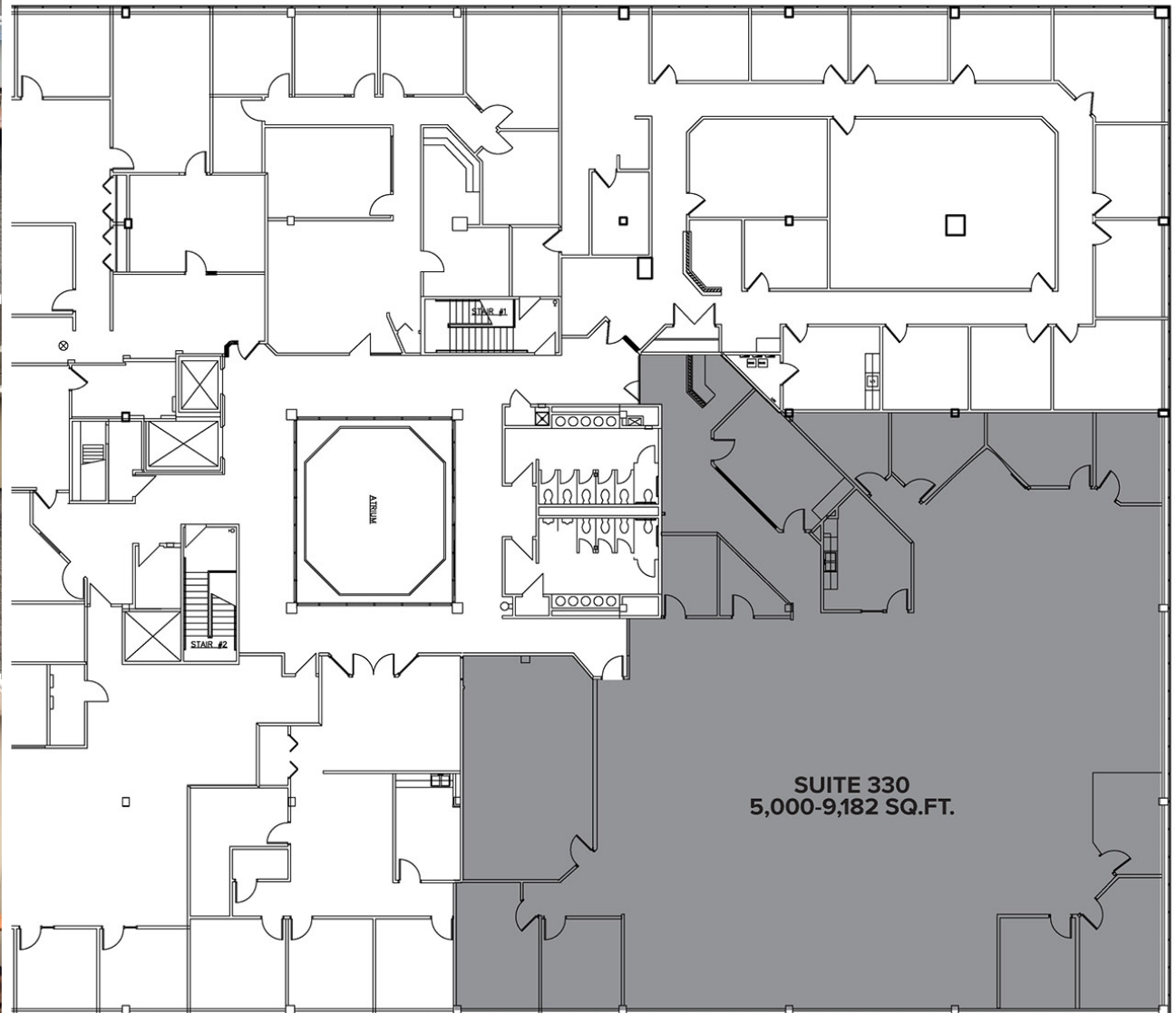


SUITE 210 // 4,820 SQ. FT.





SUITE 330 // 5,000-9,182 SQ. FT.





SURROUNDING AMENITIES





5750 NEW KING drive

TROY, MICHIGAN

For more information, contact:

DAVE MILLER

(248) 948 4183

dmiller@signatureassociates.com

JOHN BOYD

(248) 948 0102

jboyd@signatureassociates.com

SIGNATURE ASSOCIATES

One Towne Square, Suite 1200

Southfield, Michigan 48076

(248) 948 9000

signatureassociates.com



**SIGNATURE
ASSOCIATES**
KNOW SIGNATURE | KNOW RESULTS