



# Portfolio Sale

**Franklin Gateway  
(775, 777, & 779)  
Marietta, GA 30067**

## For More Information

### Cresa

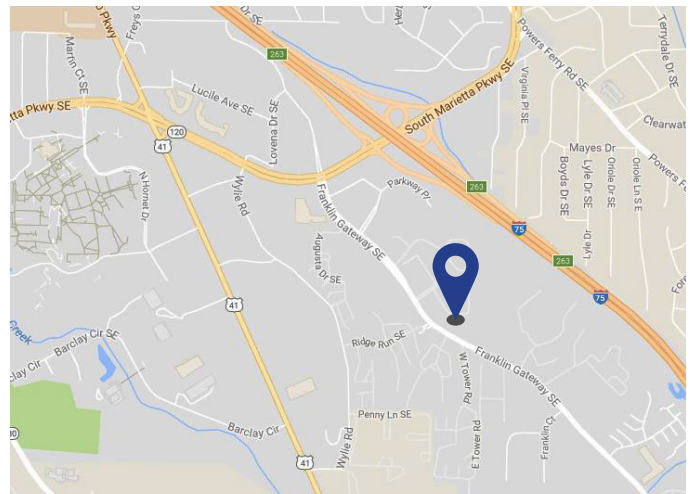
3475 Piedmont Road  
Suite 900  
Atlanta, GA 30305  
[cresa.com/atlanta](http://cresa.com/atlanta)

### Scott Hardeman

404.446.1863  
[shardeman@cresa.com](mailto:shardeman@cresa.com)

### Danny Bernstein

404.446.1565  
[dbernstein@cresa.com](mailto:dbernstein@cresa.com)



Even though obtained from sources deemed reliable, no warranty or representation, express or implied, is made as to the accuracy of the information herein, and it is subject to errors, omissions, change of price, rental or other conditions, withdrawal without notice, and to any special listing conditions imposed by our principals.

**cresa**



# Franklin Gateway (775, 777, & 779) Marietta, GA 30067

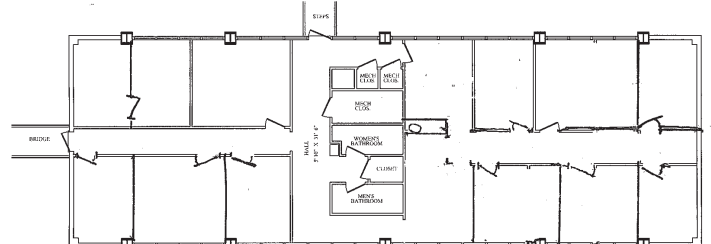
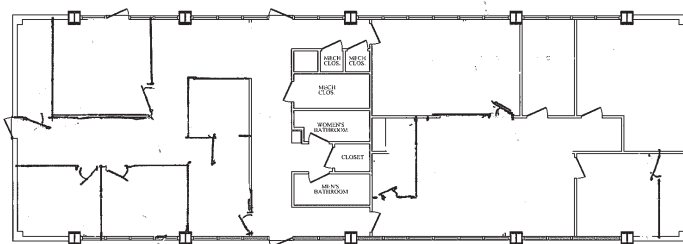
## Space Profile

<b>775 Franklin</b>	6,424 SF
<b>777 Franklin</b>	6,666 SF
<b>779 Franklin</b>	6,666 SF
<b>Submarket</b>	NW Cumberland
<b>Parking</b>	3.79 / 1,000 SF

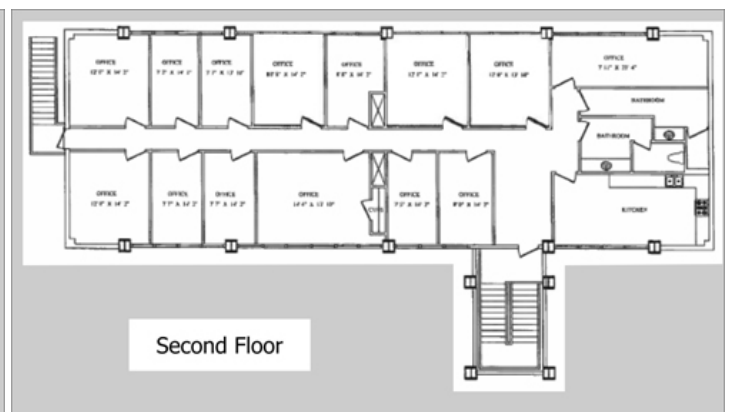
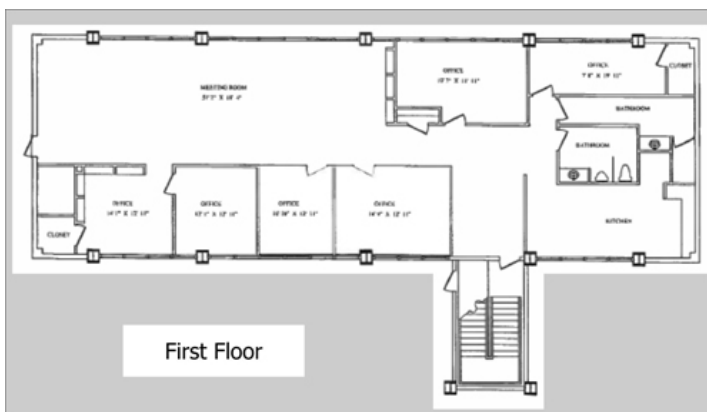
## Features

- Great Owner/User Investment Property
- Directly Adjacent to New Soccer Training Center and Headquarters for the Atlanta United FC
- Located on the New Franklin Gateway less than five miles from The Battery & SunTrust Park
- Office Park - Currently 66% Leased; Bldg 775 - Vacant

## 775 Franklin - Floor Plan



## 777 & 779 Franklin - Floor Plan



## For More Information

**Cresa**  
3475 Piedmont Road  
Suite 900  
Atlanta, GA 30305  
[cresa.com/atlanta](http://cresa.com/atlanta)

**Scott Hardeman**  
404.446.1863  
[shardeman@cresa.com](mailto:shardeman@cresa.com)

**Danny Bernstein**  
404.446.1565  
[dbernstein@cresa.com](mailto:dbernstein@cresa.com)