

For **Sale**



# South Carroll Medical Center

1380 Progress Way, Eldersburg, MD 21784



For more information

**Dominic Digiovannantonio**

+1 301 752 6799

[dom.digi@jll.com](mailto:dom.digi@jll.com)

**Rob Freedman**

+1 410 952 9444

[rob.freedman@jll.com](mailto:rob.freedman@jll.com)

**Rachel Cappetta**

+1 443 451 2607

[rachel.cappetta@jll.com](mailto:rachel.cappetta@jll.com)



**Location Review**

## **Medical office condominiums within the South Carroll Medical Center**

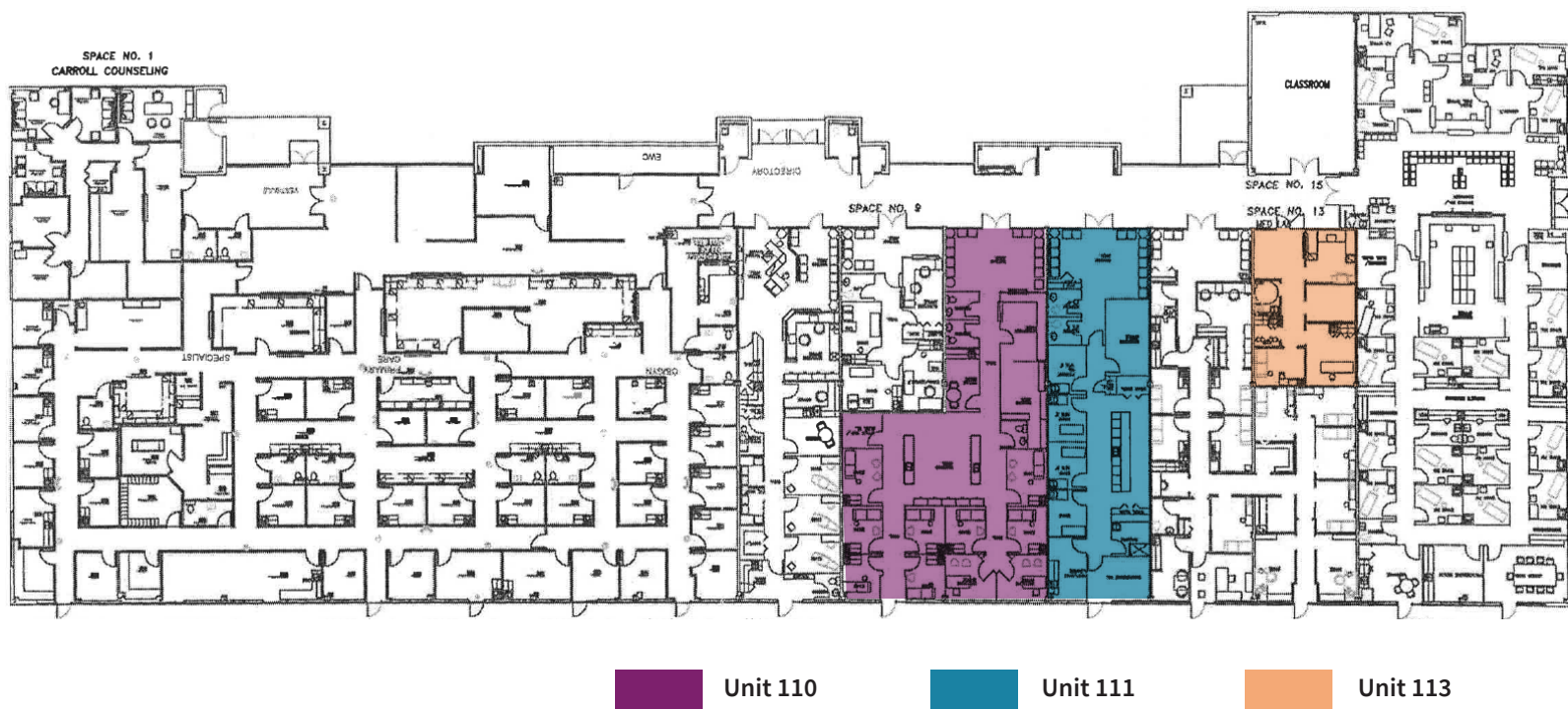
- Sale price at \$225 p.s.f.
- 765 - 5,339 SF contiguous available immediately
- All fully built-out medical suites
- Excellent visibility from Route 32 on Sykesville Road
- Long-established physician tenant mix
- Within walking distance to multiple shops and eateries
- Parking ratio of 6.5/1,000 s.f.
- Current condo fees are \$5.42 per s.f.
- Condos pay for individual electric, maintenance and cleaning.



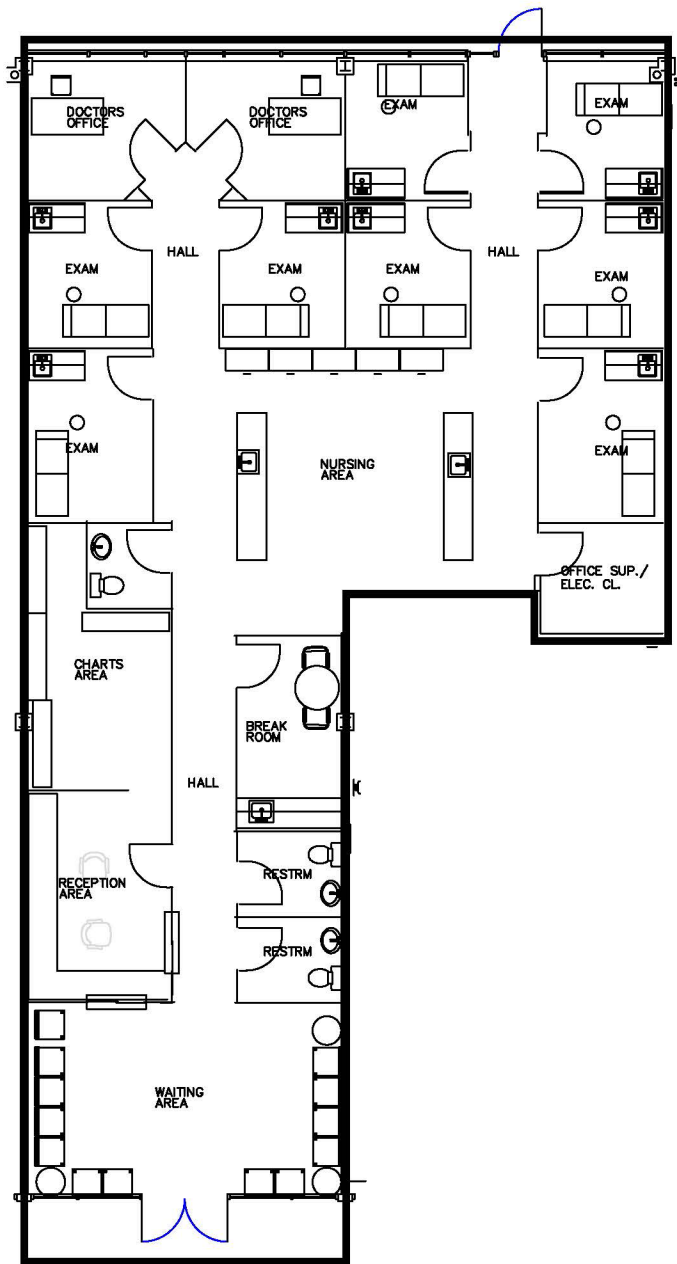
# Available office spaces



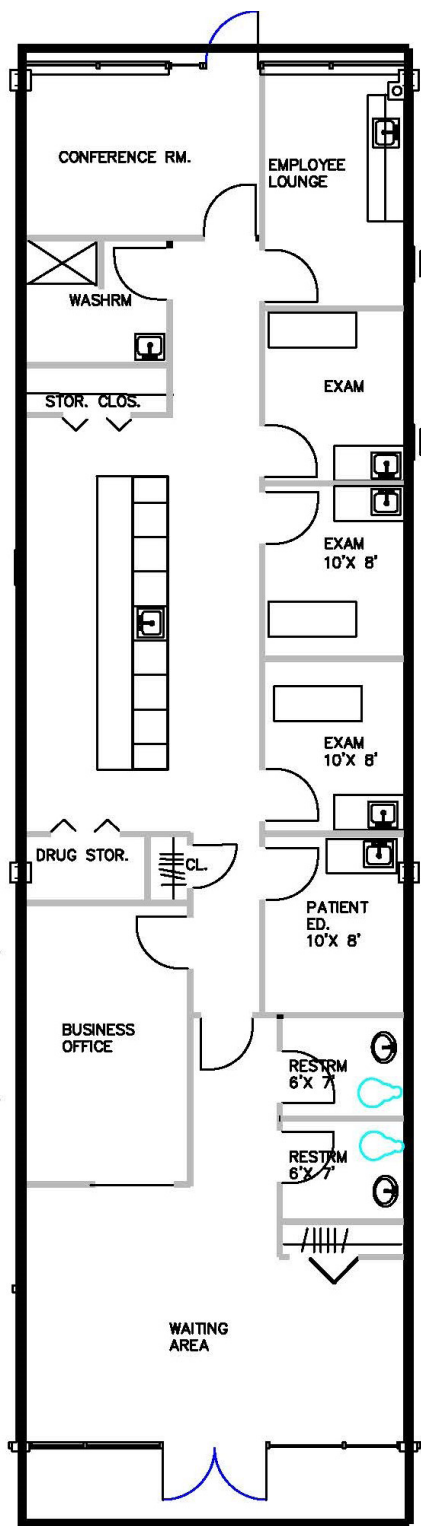
Unit	Size
110	2738 SF
111	1836 SF
113	765 SF



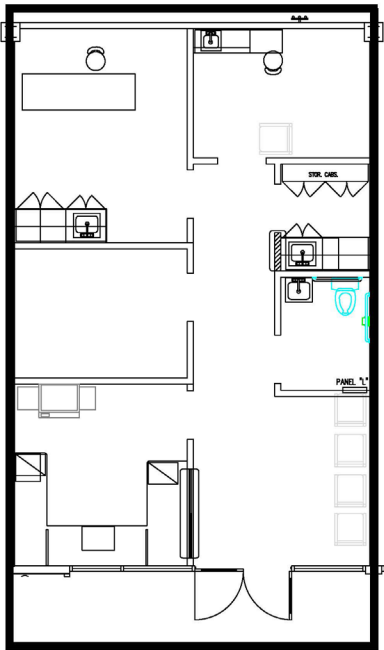
Unit 110  
2738 SF



# Available office spaces



**Unit 111**  
*1836 SF*



**Unit 113**  
*765 SF*



## For more information

**Dominic Digiovannantonio**

+1 301 752 6799

[dom.digi@jll.com](mailto:dom.digi@jll.com)

**Rob Freedman**

+1 410 952 9444

[rob.freedman@jll.com](mailto:rob.freedman@jll.com)

**Rachel Cappetta**

+1 443 451 2607

[rachel.cappetta@jll.com](mailto:rachel.cappetta@jll.com)

Although information has been obtained from sources deemed reliable, JLL does not make any guarantees, warranties or representations, express or implied, as to the completeness or accuracy as to the information contained herein. Any projections, opinions, assumptions or estimates used are for example only. There may be differences between projected and actual results, and those differences may be material. JLL does not accept any liability for any loss or damage suffered by any party resulting from reliance on this information. If the recipient of this information has signed a confidentiality agreement with JLL regarding this matter, this information is subject to the terms of that agreement. ©2023. Jones Lang LaSalle IP, Inc. All rights reserved.

