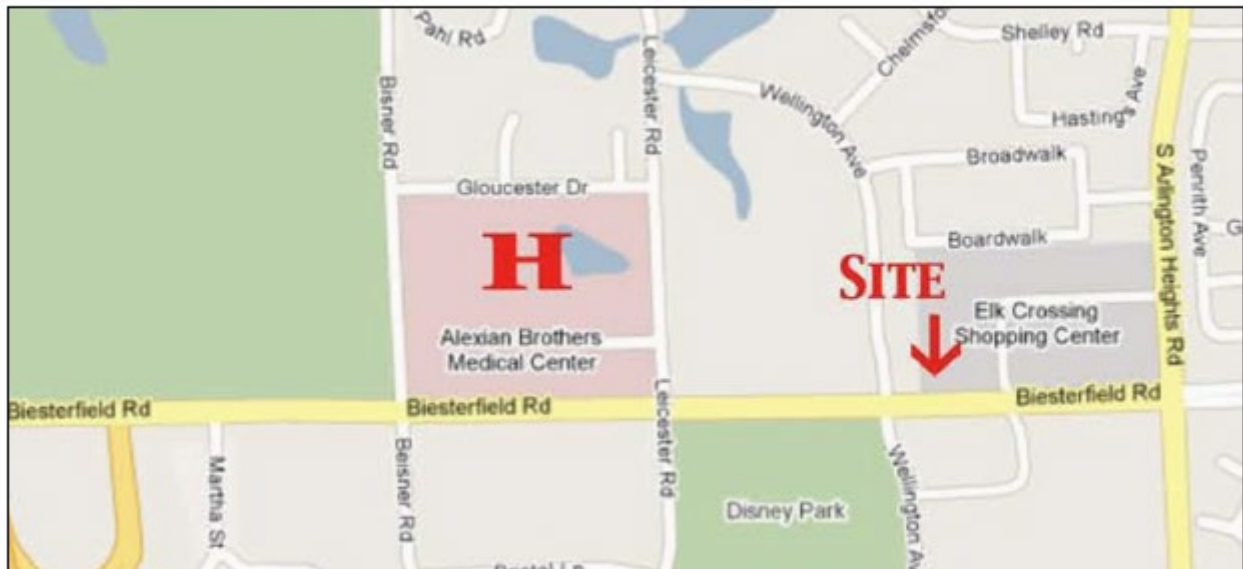
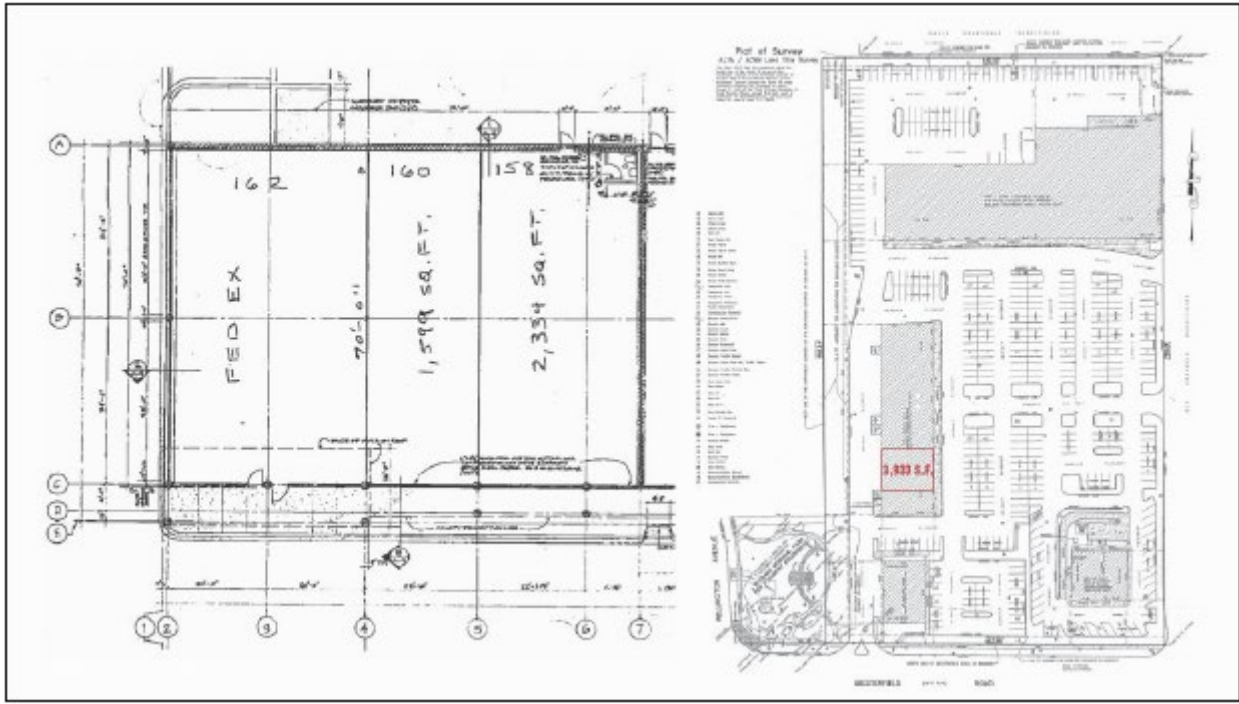


**PRIVATE EXAM ROOMS • DOCTOR'S OFFICES • RECEPTION AREA •
WASHROOMS • PATIENT WAITING AREA • CLOSE PROXIMITY TO HOSPITAL**



- **Location:** 158-160 Biesterfield Road
Elk Grove Village, IL 60007
- **Space Available:** 1,599 – 3,933 Sq. Ft.
- **Total Building Size:** 67,282
- **Land Area:** 7.80 Acres +/-
- **Parking:** 351 Stalls
- **Comments:** Medical Offices
- **Net Lease Price:** Negotiable
- **Real Estate Taxes:** \$6.97 Per Sq. Ft.
- **CAM:** \$3.59 Per Sq. Ft.
- **Escalation:** Negotiable
- **Lease Term:** Negotiable

158-160 Biesterfield Road • Elk Grove Village, IL 60007



All information herein is sources deemed reliable but not guaranteed accurate, subject to errors, omissions, and to change of price and term, prior to sale or lease, all without notice.

Contact Information • Mario Gullo • (847) 439-4400 Ext. 227 • mgullo@georgegullo.com

2050 E. Higgins Road • Elk Grove Village, IL 60007