



4200 E 7th Ave

4200 E 7th Ave, Tampa, FL 33605



Kyle Taracks, Esq.

Tactic Commercial

3210 W Cypress St, Tampa, FL 33607

ktaracks@gmail.com

(727) 688-7755



4200 E 7th Ave

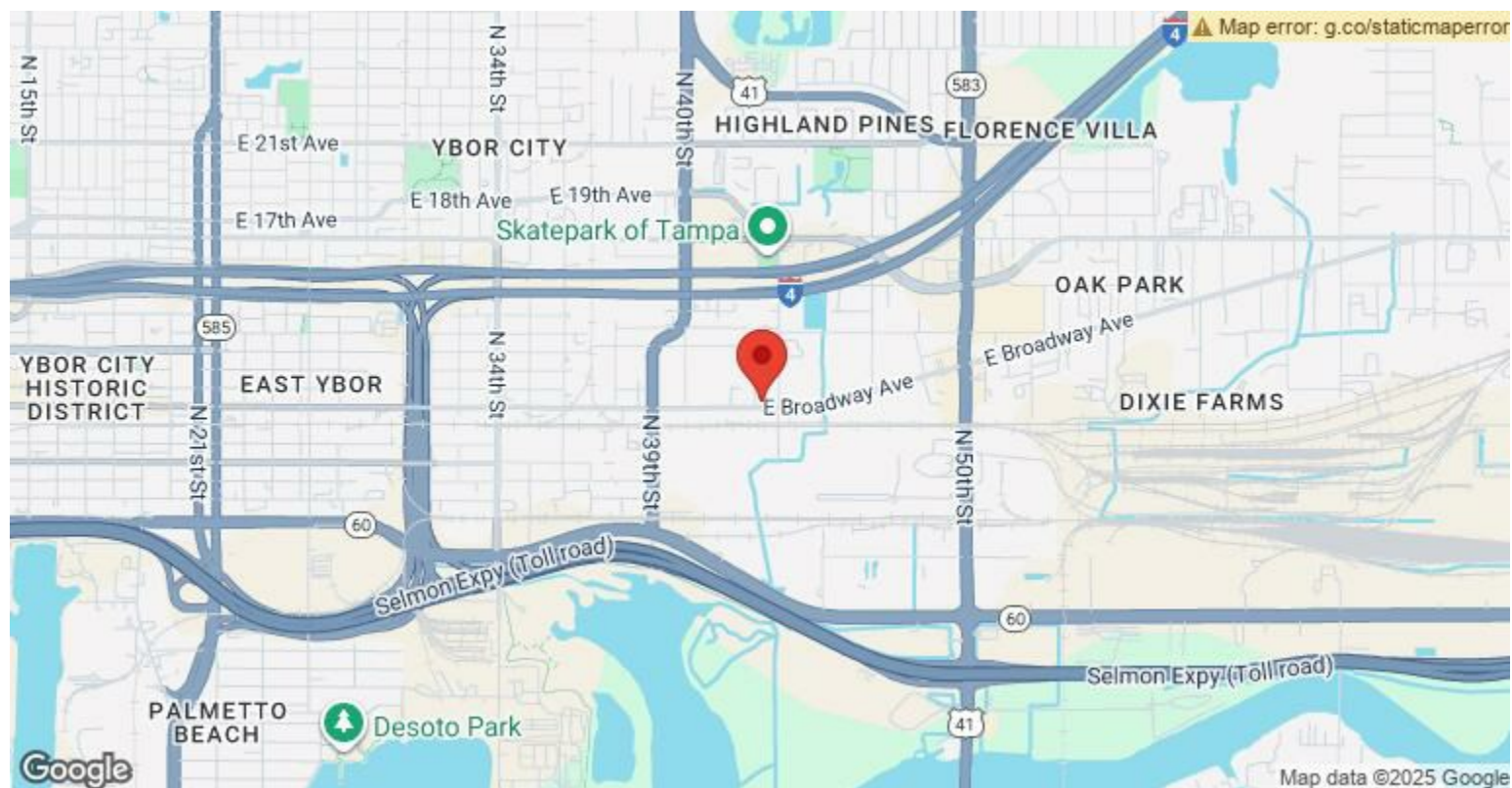
\$531,600

4200 E 7th Ave is a freestanding flex building totaling approximately 3,544 square feet in Tampa's East Ybor industrial corridor. The site offers excellent street visibility with both frontage and monument signage directly on E 7th Ave. Zoned IG (Industrial General) by the City of Tampa, the property supports a wide range of light industrial and commercial uses. Parking includes street parking along the west side of the building and pull-in covered parking at the rear (north end). The building features a clear height ranging from 12.5 to over 13 feet. Located just minutes from Ybor City, I-4, and Port Tampa Bay, this asset is well positioned for value-add repositioning or owner-user occupancy....

- Frontage and monument signage directly on E 7th Ave, just minutes from Ybor City, I-4, and Port Tampa Bay.
- Open layout with clear heights ranging from 12.5 to over 13 feet — ideal for warehouse, showroom, or flex space users.
- Zoned IG (Industrial General) by the City of Tampa, allowing a wide range of commercial and light industrial uses.



Price:	\$531,600
Property Type:	Flex
Property Subtype:	Light Distribution
Building Class:	C
Sale Type:	Investment or Owner User
Lot Size:	0.10 AC
Price Per SF:	\$150.00 PSF
Rentable Building Area:	3,544 SF
No. Stories:	1
Year Built:	1941
Tenancy:	Single
Parking Ratio:	2.82/1,000 SF
Clear Ceiling Height:	12.5-13.7 FT
No. Drive In / Grade-Level Doors:	2
Zoning Description:	IG



4200 E 7th Ave, Tampa, FL 33605

Property Photos



4200 E 7th Ave Tampa FL - 1 of 16



4200 E 7th Ave Tampa FL - 2 of 16

Property Photos



Property Photos



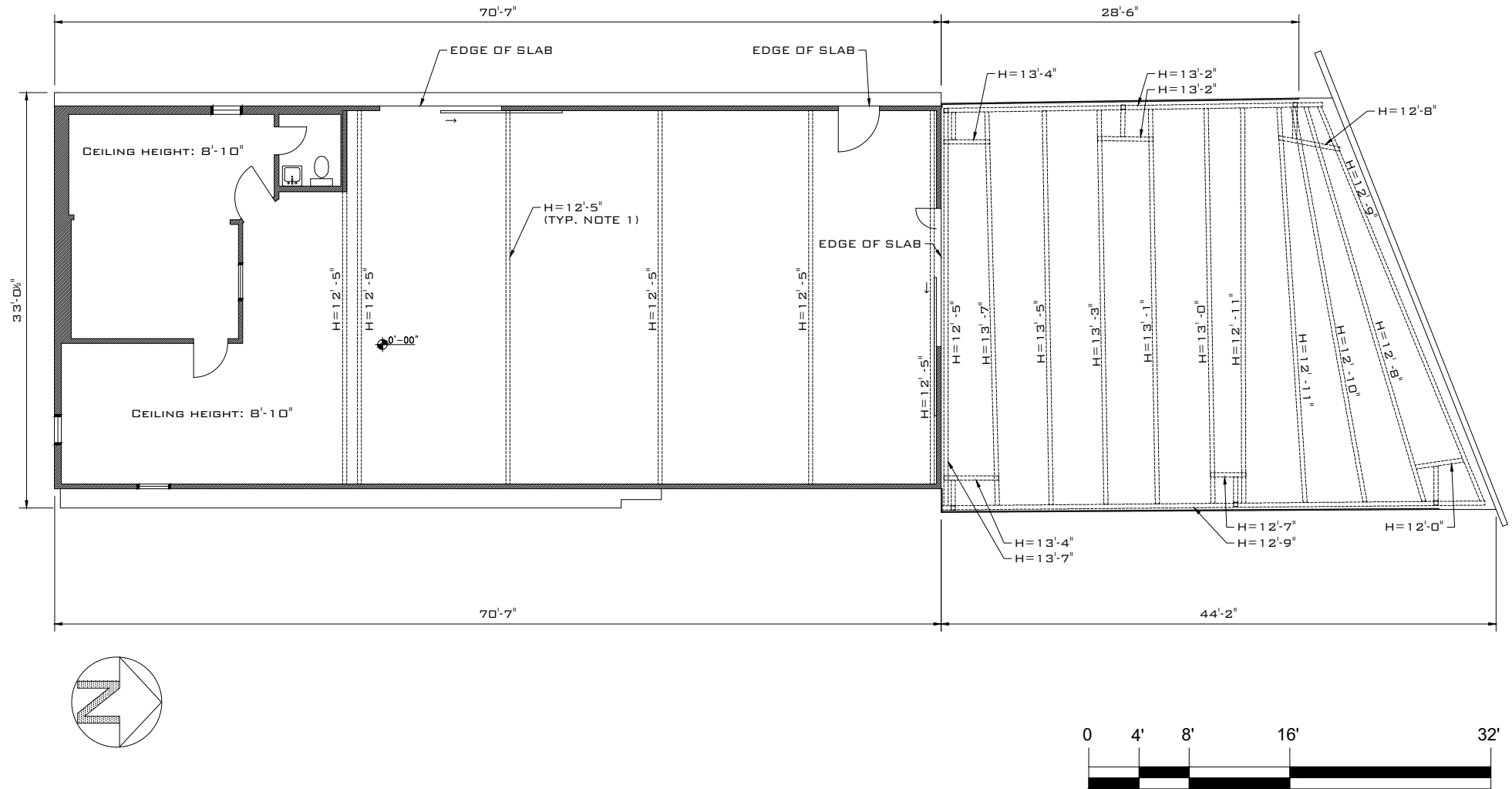
Property Photos



Property Photos



1. BOTTOM OF BAR JOIST.
2. THIS DRAWING WAS CREATED USING DATA CAPTURED WITH LASER SCANNING TECHNOLOGY.
3. VECTONET EMPLOYS A VARIETY OF SURVEYING AND LASER SCANNING EQUIPMENT TO CAPTURE AS-BUILT BUILDING INFORMATION.
4. A "BEST-FIT" APPROACH WAS USED TO REPRESENT AS-BUILT CONDITIONS.
5. CONTACT VECTONET FOR MORE INFORMATION ON THE SPATIAL DATA AND LEVEL OF ACCURACY.
6. GROSS BUILDING AREA = 3,544.41 FT²



4200 E 7TH AVE.
TAMPA, FL 33605



VECTORNET3D.COM

DRAWN: ULA
CHECKED: NJS

DATE: 06/03/25
DATE: 06/03/25

FLOOR PLAN
LEVEL 1