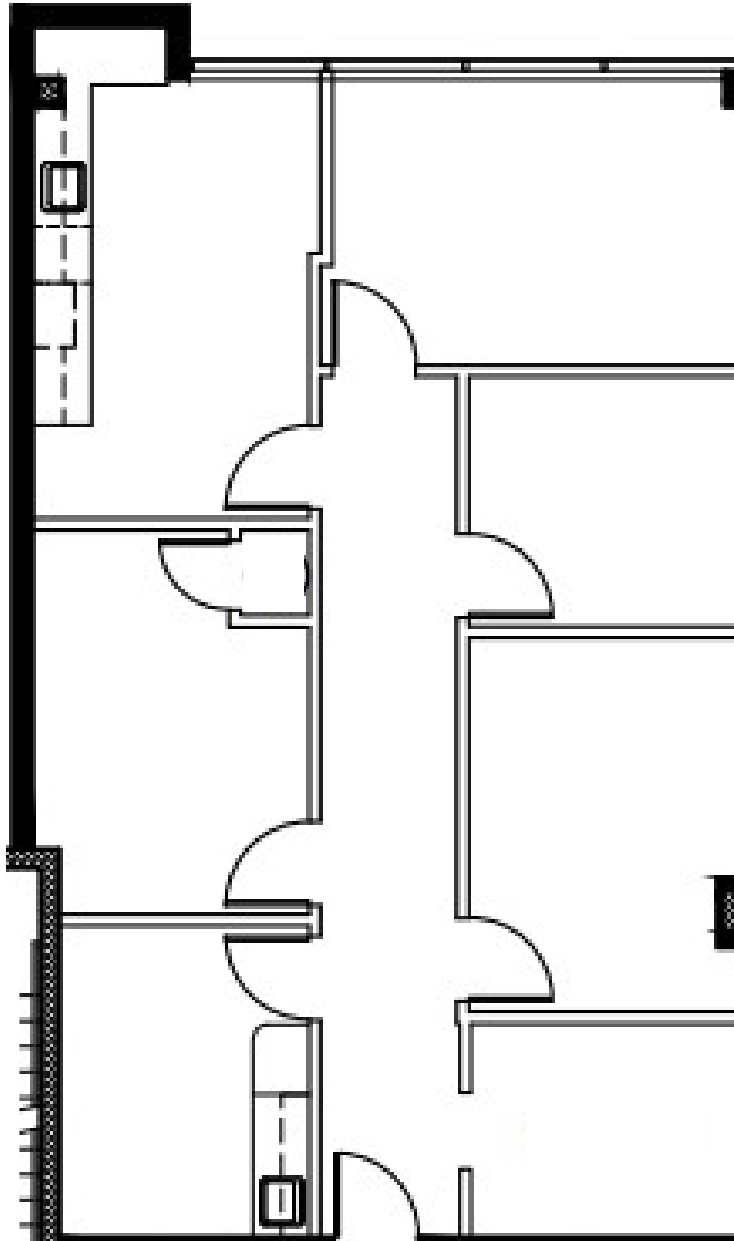


# PALMS OF PASADENA

## MEDICAL OFFICE BUILDING

1615 PASADENA AVENUE SOUTH  
ST. PETERSBURG, FL 33707

Suite 370 | 1,211 SF |



Building owned and managed by  
**HEALTHCARE REALTY**

**BRIAN BREEDING, CCIM**

Managing Director  
+1 813 204 5369  
brian.breeding@cushwake.com

**WENDY GIFFIN**

Executive Director  
+1 727 599 3799  
wendy.giffin@cushwake.com