

7330 INDIANAPOLIS BLVD , HAMMOND, IN 46324



For more information, please contact:

ANTONY MIOCIC

Director of Office Group

219.864.0200

amiocic@latitudeco.com

CHANDLER KIMMEL

219.864.0200

ckimmel@latitudeco.com



LATITUDE
COMMERCIAL
REAL ESTATE SERVICES

LATITUDECO.COM

LEASING BLVD PROFESSIONAL BUILDING

7330 Indianapolis Blvd , Hammond, IN 46324



EXECUTIVE SUMMARY



OFFERING SUMMARY

Available SF: 750 - 1,800 SF

Lease Rate: Negotiable

Lot Size: 0.25 Acres

Year Built: 1962

Building Size: 4364 SF

Zoning: C-4

PROPERTY HIGHLIGHTS

- Two turnkey office suites available on Indianapolis Blvd in Hammond
- 750sf medical suite consisting of a reception area and 2 exam rooms
- 1800sf professional or medical suite consisting of 7 offices, a reception area and an open space
- Located immediately north of the expressway
- Pylon signage provides visibility on Indianapolis Blvd



ANTONY MIOCIC
Director of Office Group
219.864.0200
amiocic@latitudeco.com

CHANDLER KIMMEL
219.864.0200
ckimmel@latitudeco.com

LEASING BLVD PROFESSIONAL BUILDING

7330 Indianapolis Blvd , Hammond, IN 46324



PROPERTY DESCRIPTION

PROPERTY DESCRIPTION

Introducing two exceptional office suites for lease at 7330 Indianapolis Blvd, Hammond, IN, 46324. The first suite, a 750sf medical space, features a reception area and 2 exam rooms, while the second, an 1800sf professional or medical suite, boasts 7 offices, a reception area, and open space for versatility. Nestled just north of the expressway, this property offers prime visibility with pylon signage on Indianapolis Blvd. Ideal for medical or professional use, these turnkey suites present an outstanding opportunity for businesses seeking a strategic and well-equipped location. This is the perfect place to establish or expand your presence in Hammond's thriving commercial landscape.

LOCATION DESCRIPTION

This property is located on Indianapolis Boulevard in Hammond, immediately north of I-94 and west of the Purdue Northwest Campus. Hammond is a city in Lake County, Indiana. Located along Lake Michigan, it is part of the Chicago metropolitan area and the only city in Indiana to border Chicago. As of the 2020 census, it is the eighth-most populous city in Indiana, with 77,879 residents.



ANTONY MIOCIC

Director of Office Group
219.864.0200
amiocic@latitudeco.com

CHANDLER KIMMEL

219.864.0200
ckimmel@latitudeco.com

LEASING BLVD PROFESSIONAL BUILDING

7330 Indianapolis Blvd , Hammond, IN 46324



LEASE SPACES



LEASE INFORMATION

Lease Type:	MG	Lease Term:	Negotiable
Total Space:	750 - 1,800 SF	Lease Rate:	Negotiable

AVAILABLE SPACES

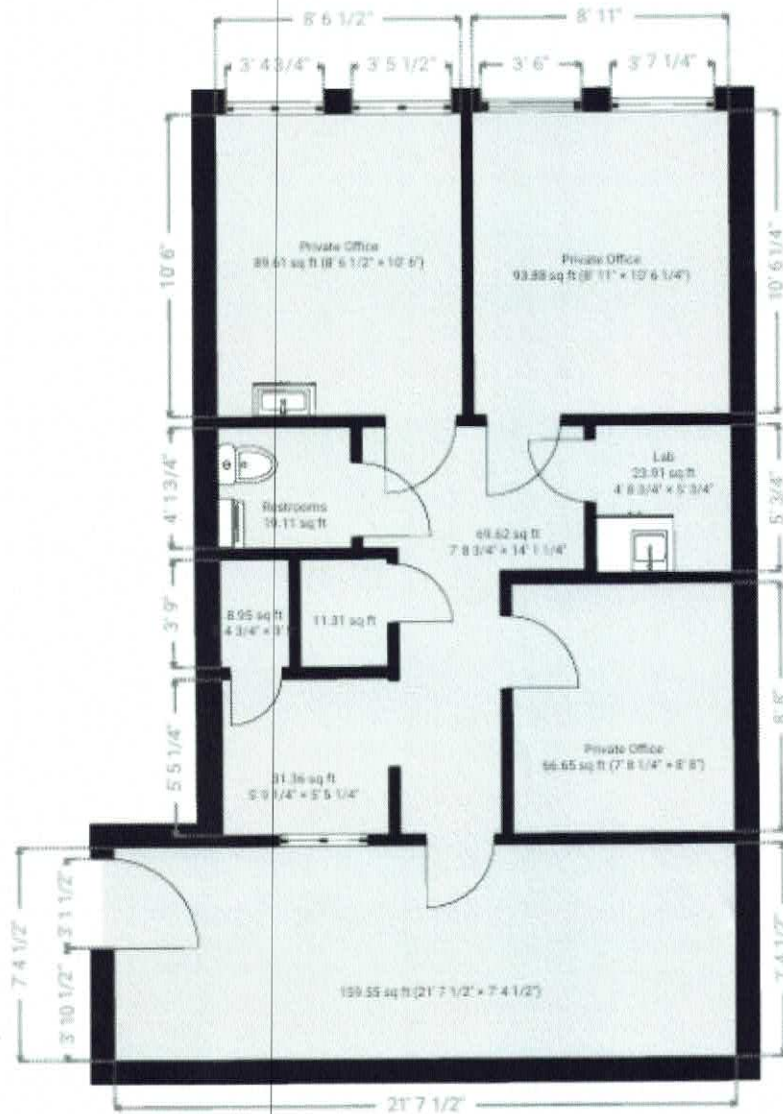
SUITE	TENANT	SIZE (SF)	LEASE TYPE	LEASE RATE	DESCRIPTION
7330 Indianapolis Blvd Ste 2	Available	1,800 SF	Modified Gross	Negotiable	-
7330 Indianapolis Blvd Ste 3	Available	750 SF	Modified Gross	Negotiable	-

ANTONY MIOCIC
Director of Office Group
219.864.0200
amiocic@latitudeco.com

CHANDLER KIMMEL
219.864.0200
ckimmel@latitudeco.com

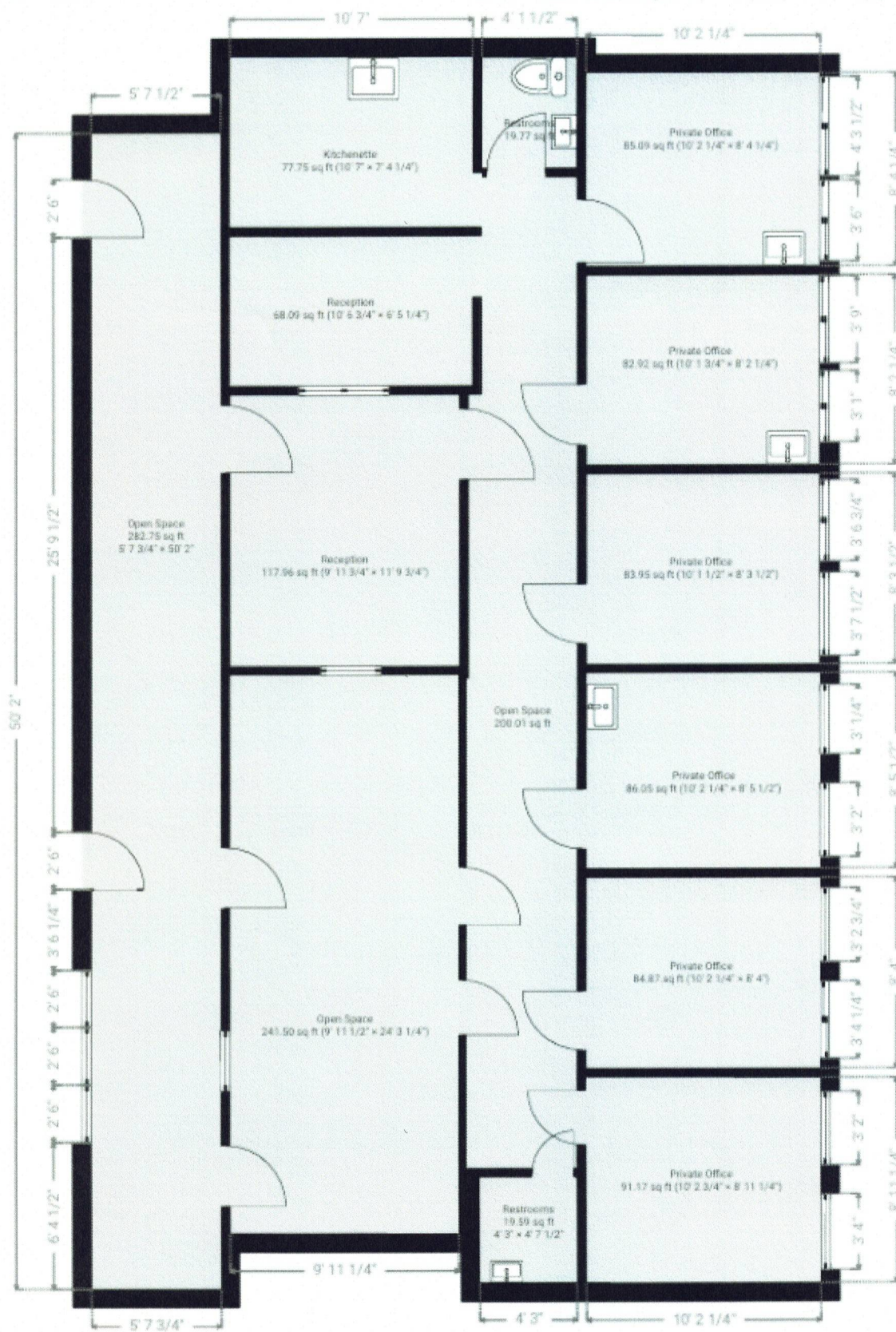
▼ 1st Floor

TOTAL AREA: 704.20 sq ft • LIVING AREA: 704.20 sq ft • ROOMS: 10



▼ Ground Floor

TOTAL AREA: 1782.81 sq ft · LIVING AREA: 1782.81 sq ft · ROOMS: 14

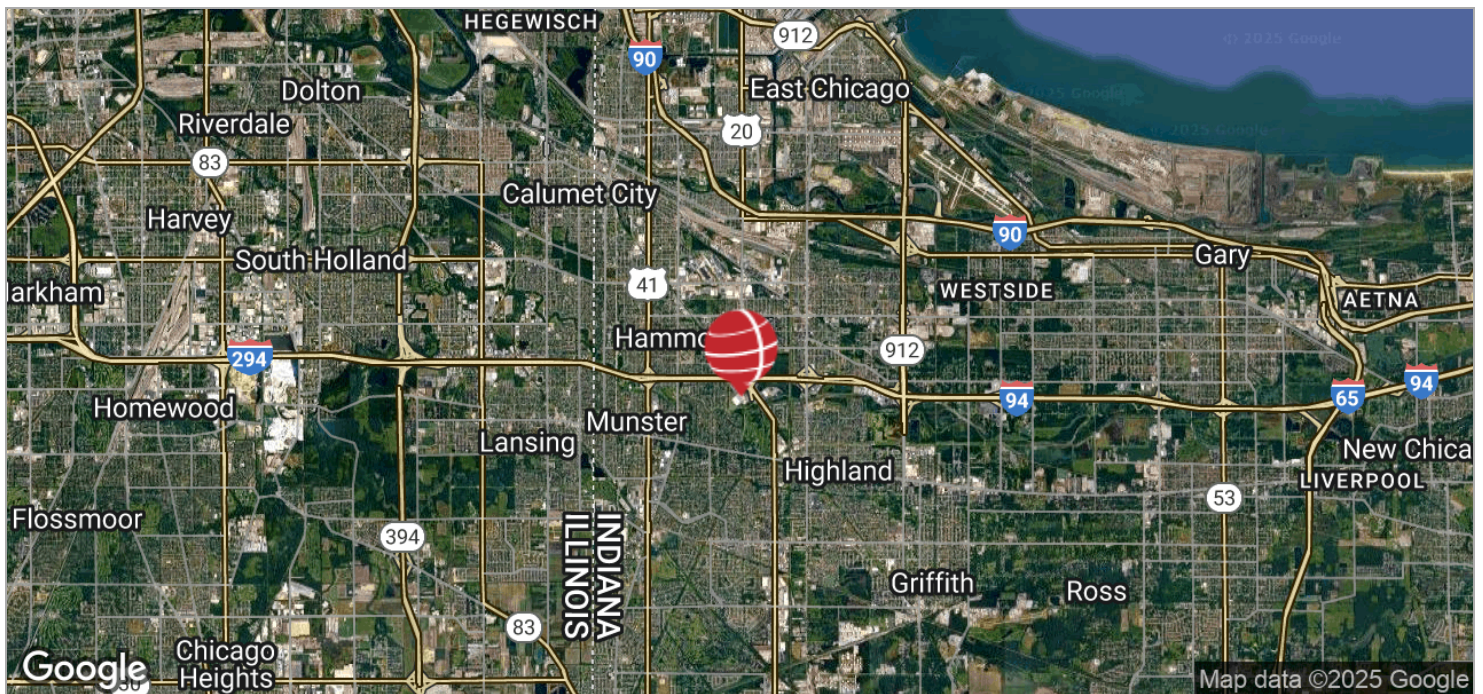
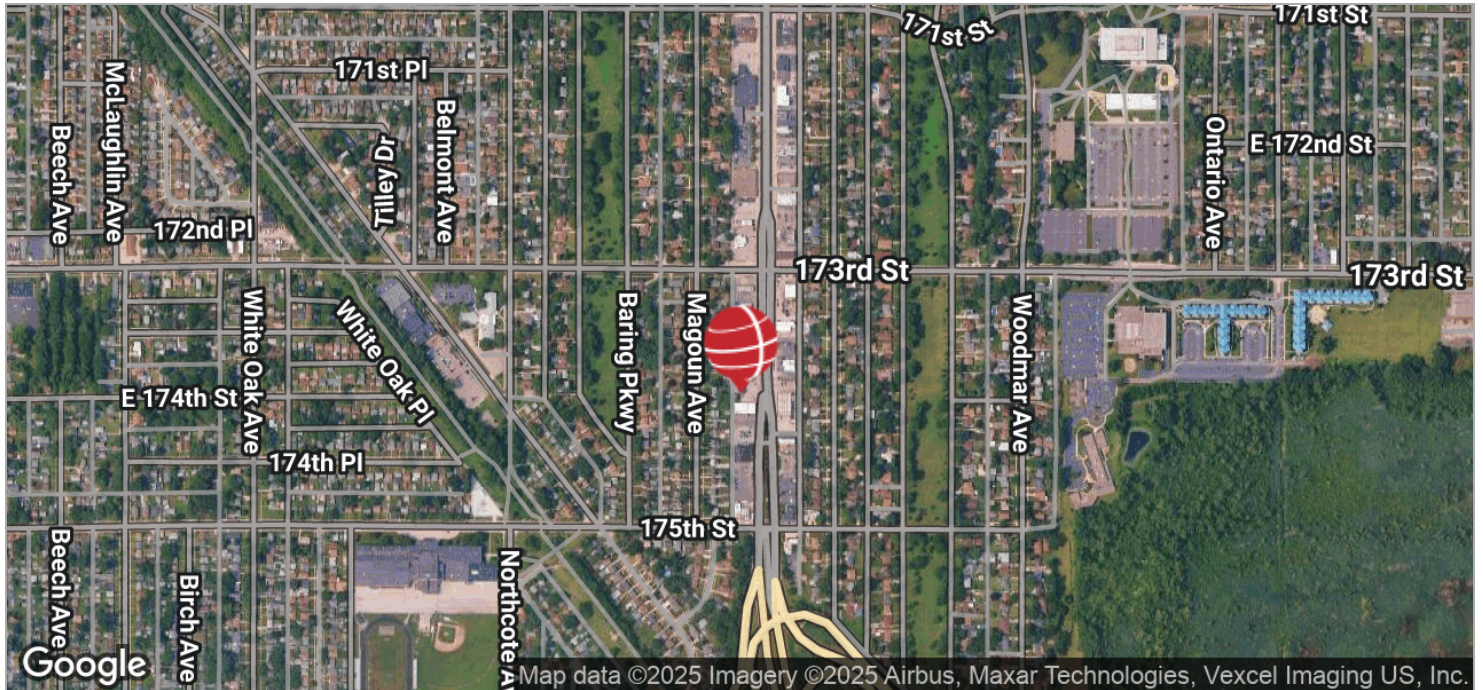


LEASING BLVD PROFESSIONAL BUILDING

7330 Indianapolis Blvd , Hammond, IN 46324



LOCATION MAPS



ANTONY MIOCIC
Director of Office Group
219.864.0200
amiocic@latitudeco.com

CHANDLER KIMMEL
219.864.0200
ckimmel@latitudeco.com

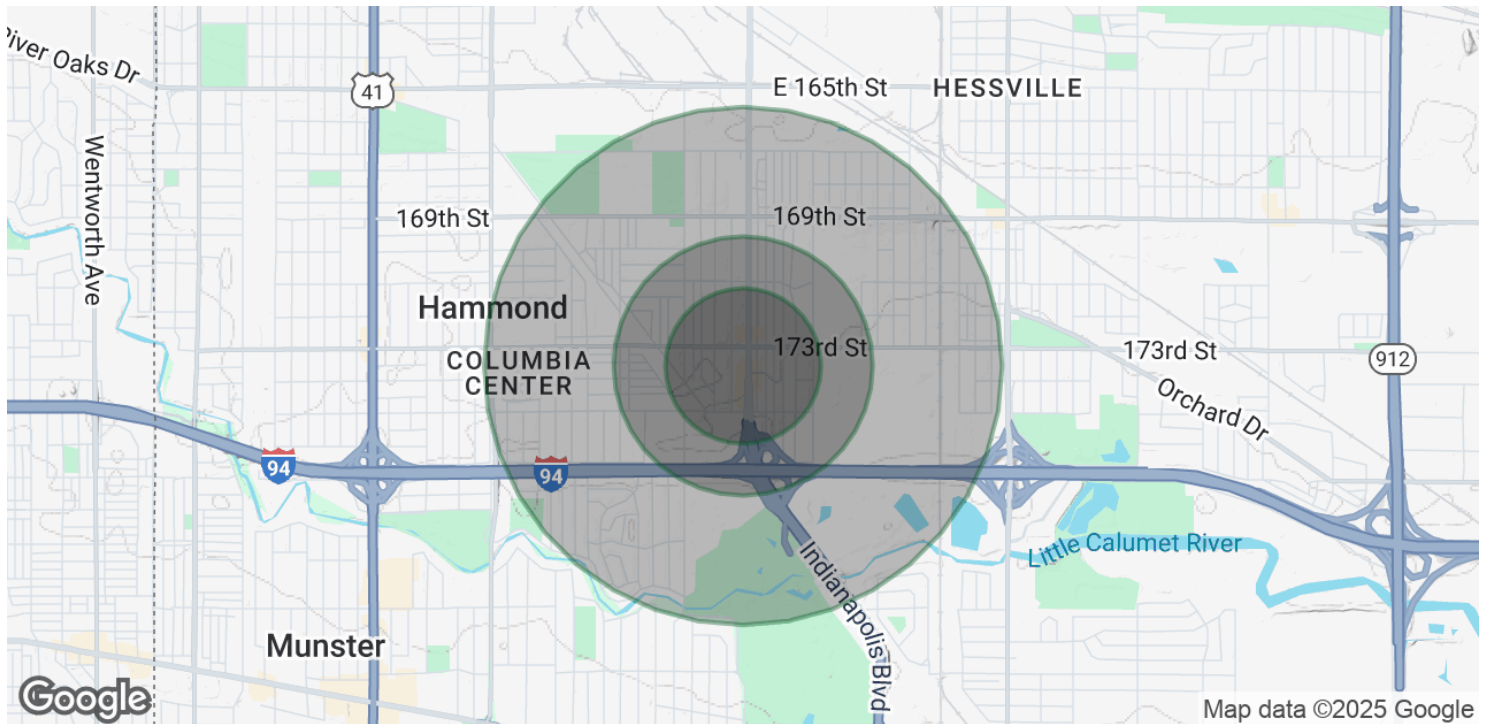
• •
LATITUDECO.COM

LEASING BLVD PROFESSIONAL BUILDING

7330 Indianapolis Blvd , Hammond, IN 46324



DEMOGRAPHICS MAP & REPORT



POPULATION

	0.3 MILES	0.5 MILES	1 MILE
Total Population	1,049	2,737	13,042
Average Age	39	39	38
Average Age (Male)	39	38	37
Average Age (Female)	40	39	39

HOUSEHOLDS & INCOME

	0.3 MILES	0.5 MILES	1 MILE
Total Households	376	1,000	5,193
# of Persons per HH	2.8	2.7	2.5
Average HH Income	\$93,182	\$88,537	\$73,710
Average House Value	\$217,257	\$206,965	\$174,661

Demographics data derived from AlphaMap

ANTONY MIOCIC
Director of Office Group
219.864.0200
amiocic@latitudeco.com

CHANDLER KIMMEL
219.864.0200
ckimmel@latitudeco.com