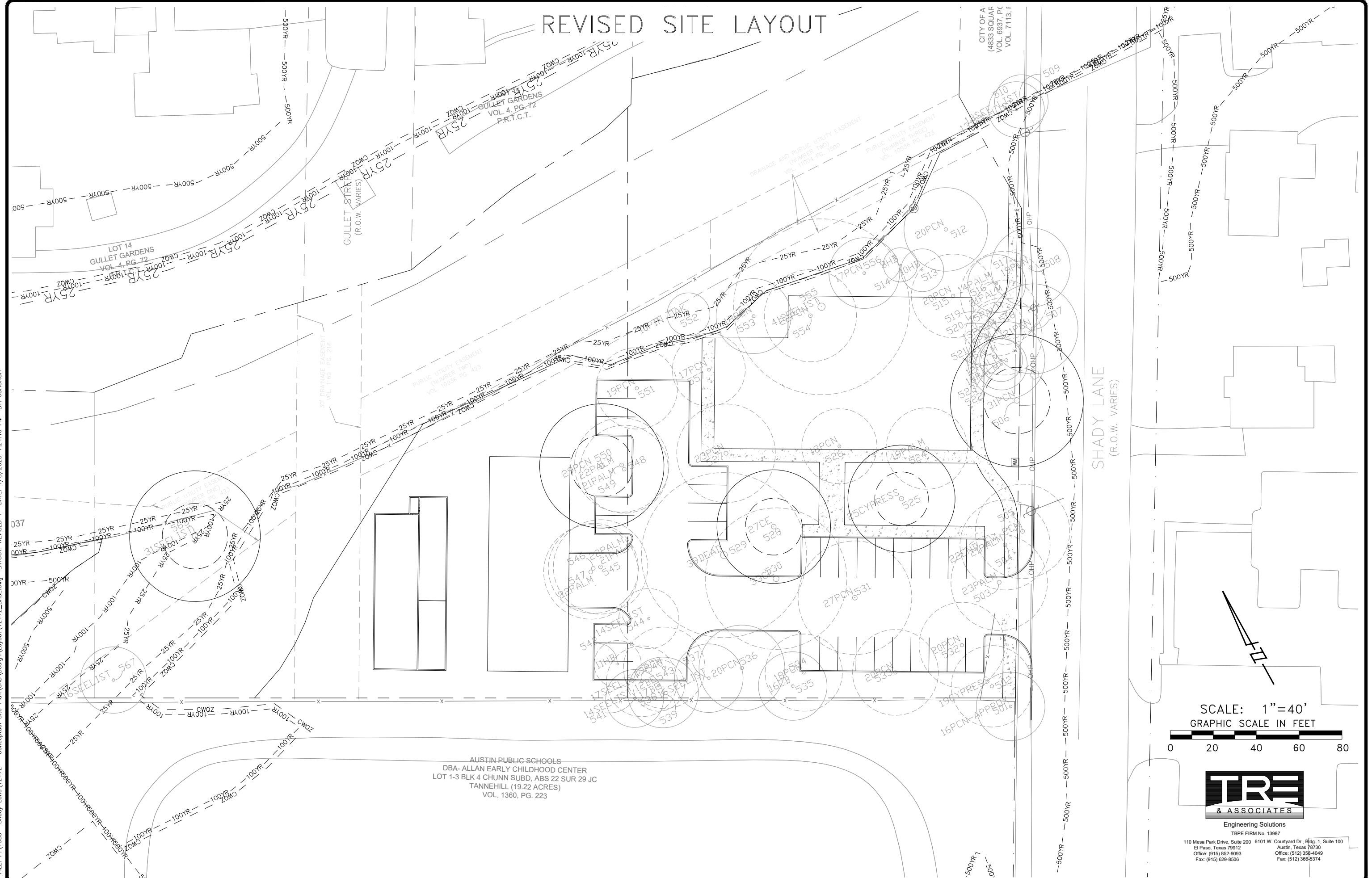
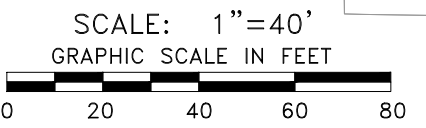


# REVISED SITE LAYOUT

FILE: P:\1939 - Shady Lane\Conceptual Site Plan\CAD\Design\Layout\12172\_BASE.dwg LAYOUT: REVISED 1 DATE: 4/3/2023 1:24:40 PM BY: JCHURCH



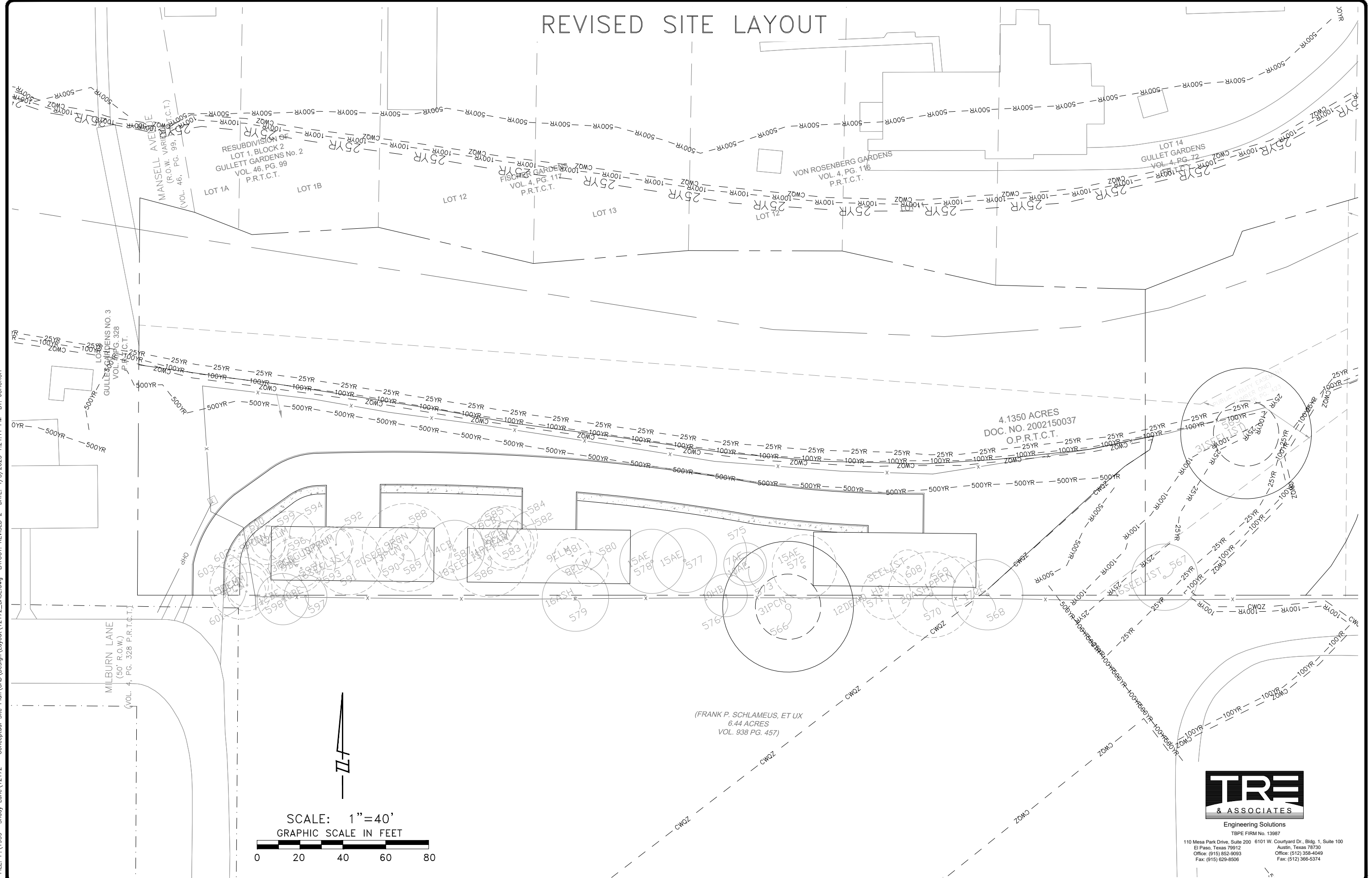
AUSTIN PUBLIC SCHOOLS  
 DBA- ALLAN EARLY CHILDHOOD CENTER  
 LOT 1-3 BLK 4 CHUNN SUBD, ABS 22 SUR 29 JC  
 TANNEHILL (19.22 ACRES)  
 VOL. 1360, PG. 223



Engineering Solutions  
 TBPE FIRM No. 13987  
 110 Mesa Park Drive, Suite 200 6101 W. Courtyard Dr., Bldg. 1, Suite 100  
 El Paso, Texas 79912 Austin, Texas 78730  
 Office: (915) 852-9093 Office: (512) 358-4049  
 Fax: (915) 629-8506 Fax: (512) 366-6374

# REVISED SITE LAYOUT

FILE: P:\1939-- Shady Lane\12172 - Conceptual Site Plan\CAD\Design\Layout\12172\_BASE.dwg LAYOUT: REVISED 2 DATE: 4/3/2023 1:24:41 PM BY: JCHURCH



Engineering Solutions  
TBPE FIRM No. 13987  
110 Mesa Park Drive, Suite 200 6101 W. Courtyard Dr., Bldg. 1, Suite 100  
El Paso, Texas 79912 Austin, Texas 78730  
Office: (915) 852-9093 Office: (512) 358-4049  
Fax: (915) 629-8506 Fax: (512) 366-3374