



## 58-60 MAIN STREET | HACKENSACK, NJ 07601

### EXECUTIVE SUMMARY

NAI James E. Hanson is pleased to present, on an exclusive basis, for sale 58-60 Main Street Unit 1B, Hackensack, NJ 07601 (the "Property") a ±1,030 SF ground level office condominium. Ideal for an owner-user seeking an office in downtown Hackensack near the Court House. Main Street is a vibrant commercial corridor with many new cafes, restaurants and thousands of new luxury apartments.

Currently occupied with a month-to-month (MTM) tenant, contact listing agent to arrange a private tour.

**SALE PRICE: \$209,000**

### PROPERTY SUMMARY

Address	58-60 Main St, Unit 1B
Municipality	Hackensack
County	Bergen
Block / Lot / Qual	205 / 3 / C001B
Tax Class	4A (Commercial)
Zoning	B-2; Downtown Rehabilitation Area
CAM Charge	\$299.97/mo. includes utilities
Real Estate Taxes	\$9,274.25
Assesment & Taxes	7.66%
Traffic Count (AADT)	13,416

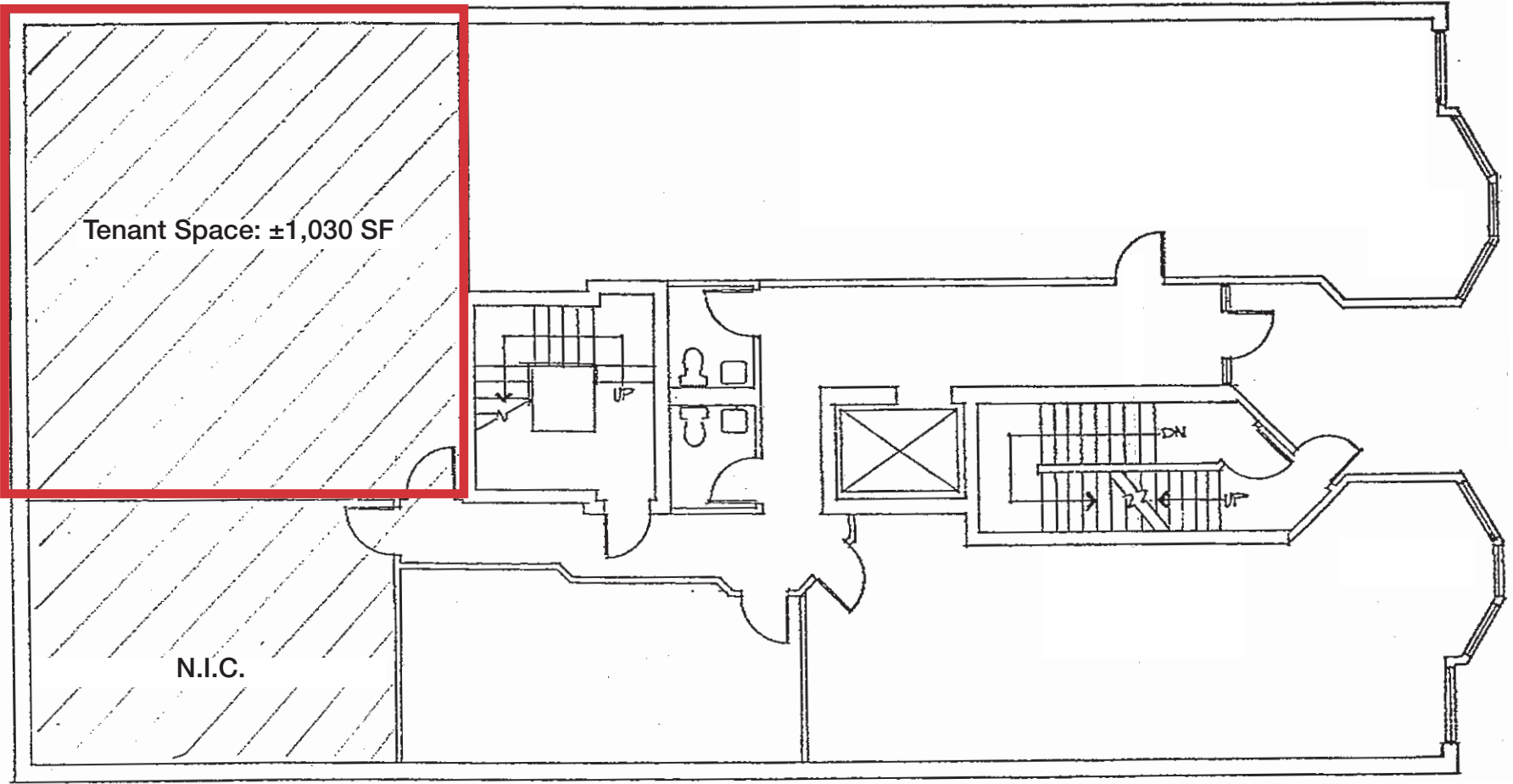
**Jonathan M. Kristofich | Vice President**  
201 488 5800 x103 | [jkristofich@naihanson.com](mailto:jkristofich@naihanson.com)

**Ayush Patel | Associate**  
201 488 5800 x127 | [apatel@naihanson.com](mailto:apatel@naihanson.com)

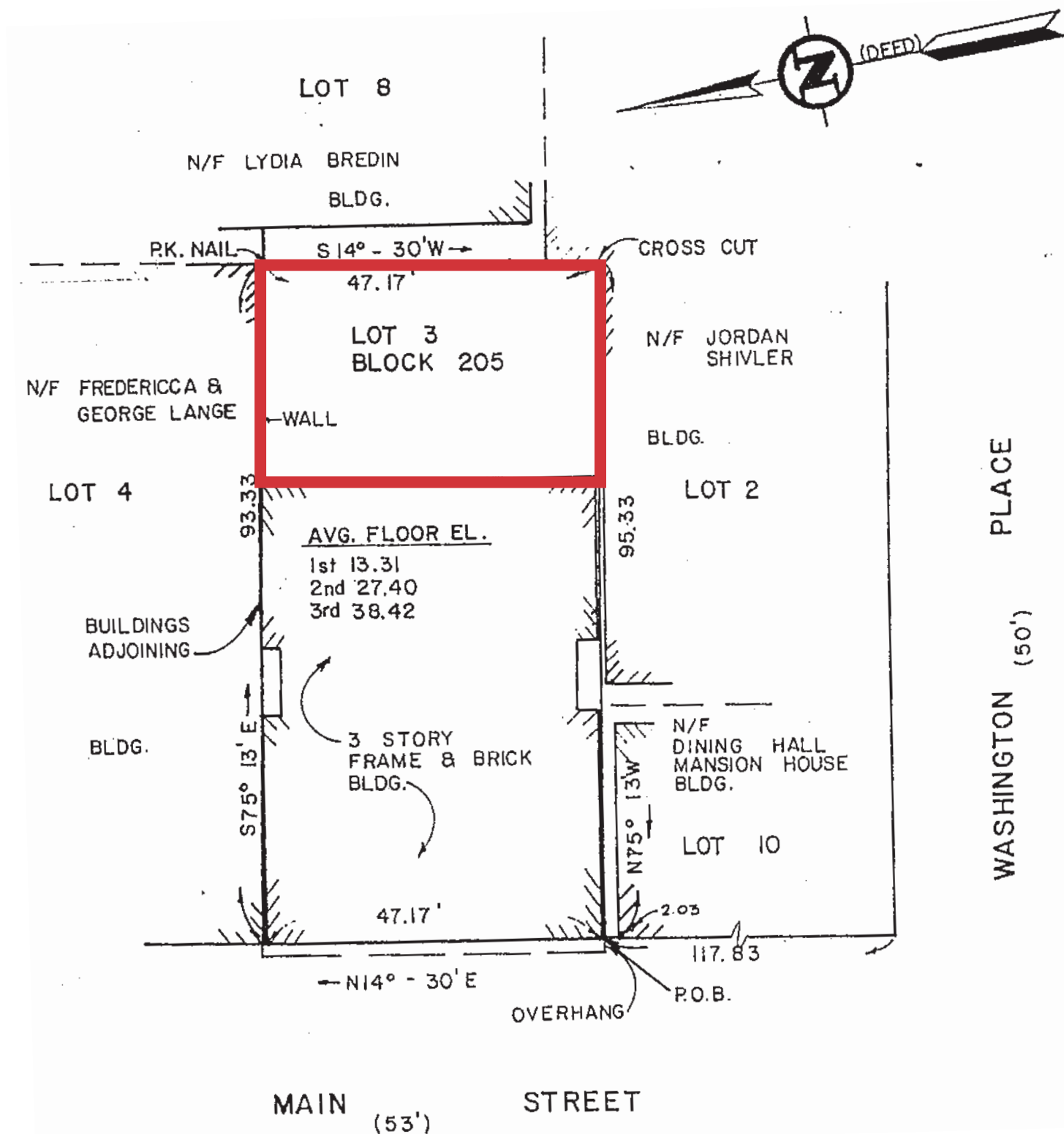
### SERVICES OFFERED

Brokerage • Property Management • Corporate Services • Financing • Tenant Representation • Cold Storage • Investment Services

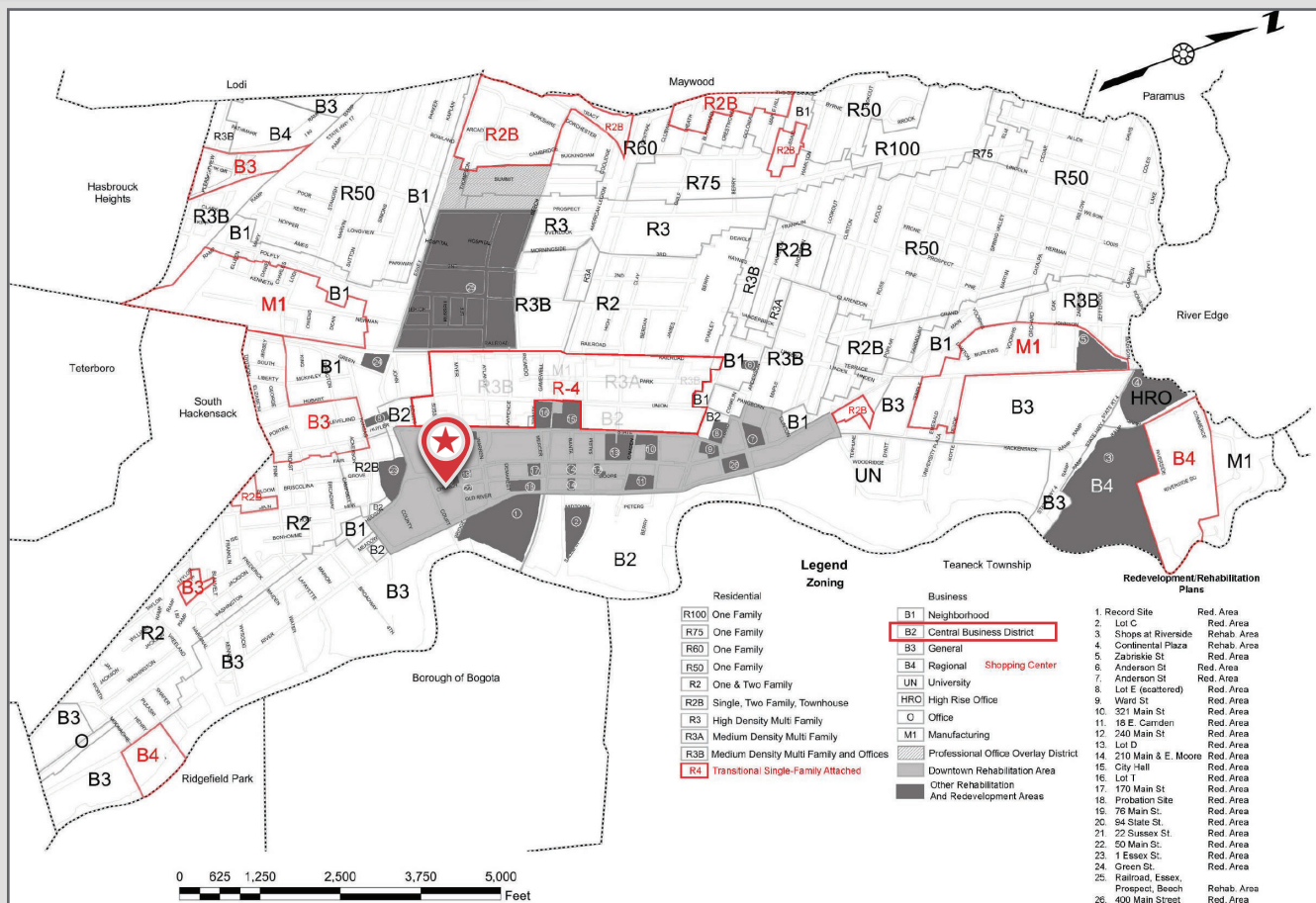
THE INFORMATION CONTAINED HEREIN HAS BEEN OBTAINED FROM SOURCES CONSIDERED TO BE RELIABLE, BUT NO GUARANTEE OF ITS ACCURACY IS MADE BY NAI JAMES E. HANSON.



**FIRST FLOOR**      **COMMON AREA: 753 SF**  
**GROSS FLOOR AREA: 4,089**







## B-2 Zoning Permitted Uses

- **Residential Uses:** Multifamily dwellings
- **Nonresidential Uses:** Professional, medical, and business offices
- **Consumer Services and Lodging:** Bank or trust company or savings and loan institutions, except drive-in facilities; Beauty services; Personal service establishments; Studios for instruction and practice of dancing, fine and performance arts, physical self defense, and physical exercise
- **Education:** Business or vocational schools
- **Entertainment, Recreation, and Assembly:** Art gallery; Theaters, concert halls, auditoriums
- **Food and Drink:** Eating and drinking establishments, excluding drive-through
- **Healthcare and Social Services:** Assisted living
- **Retail/Consumer Sales:** Neighborhood retail; General retail
- **Public/Quasi-Public/Charitable:** County, state and federal government buildings; County-, state- and federal-owned park and recreation; Utilities; Municipal buildings; Municipal open space

[CLICK HERE FOR FULL ZONING & REQUIREMENTS](#)

[CLICK HERE FOR THE LOT D REDEVELOPMENT PLAN](#)

[CLICK HERE FOR THE DOWNTOWN REDEVELOPMENT PLAN](#)