

319 E Main Street

TOWANDA, KS 67144

FOR LEASE

Retail Property



Features

- Large open floorplan with flexible layout potential
- Expansive front windows for natural light and product display
- Direct Main Street frontage with strong local visibility
- High ceilings and wide entry ideal for retail or office use
- Walkable location near other local businesses and community traffic
- Move-in ready with minimal upfront improvements needed
- Ample street parking directly in front

Units Available

SPACE	SIZE (SF)	LEASE RATE
Suite 319	2,120 SF	\$10.00 SF/yr



Johanna Kellner-Ledesma
COMMERCIAL REAL ESTATE PROFESSIONAL
316.312.3385
johanna.kscre@gmail.com
KS #244521

Each office independently owned and operated.

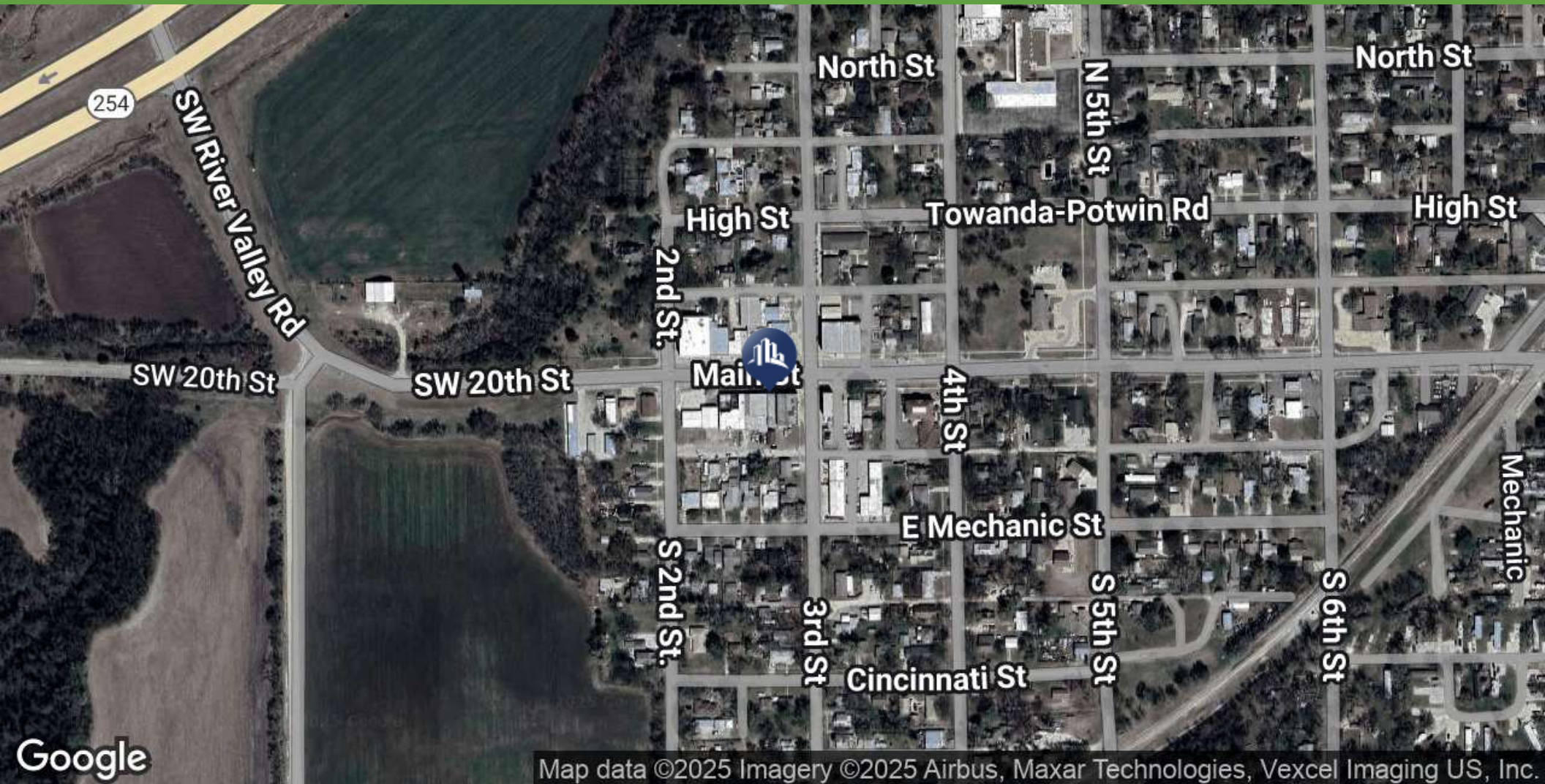
We obtained the information above from sources we believe to be reliable. However, we have not verified its accuracy and make no guarantee, warranty or representation about it. It is submitted subject to the possibility of errors, omissions, change of price, rental or other conditions, prior sale, lease or financing, or withdrawal without notice. We include projections, opinions, assumptions or estimates for example only, and they may not represent current or future performance of the property. You and your tax and legal advisors should conduct your own investigation of the property and transaction.

319 E Main Street

TOWANDA, KS 67144

FOR LEASE

Retail Property



Johanna Kellner-Ledesma
COMMERCIAL REAL ESTATE PROFESSIONAL
316.312.3385
johanna.kscre@gmail.com
KS #244521

Each office independently owned and operated.

We obtained the information above from sources we believe to be reliable. However, we have not verified its accuracy and make no guarantee, warranty or representation about it. It is submitted subject to the possibility of errors, omissions, change of price, rental or other conditions, prior sale, lease or financing, or withdrawal without notice. We include projections, opinions, assumptions or estimates for example only, and they may not represent current or future performance of the property. You and your tax and legal advisors should conduct your own investigation of the property and transaction.