

THE SHOPPES AT LOUVIERS

Dann Gladnick

302.283.1800
dgladnick@dsmre.com

Dan Wham

302.283.1800
dwham@dsmre.com

665 PAPER MILL ROAD, NEWARK, DE 19711

RETAIL SPACE FOR LEASE



DSM
COMMERCIAL

3304 OLD CAPITOL TRAIL \\\ WILMINGTON, DE 19808 \\\ 302.283.1800 \\\ DSMRE.COM



PROPERTY DESCRIPTION

The Shoppes at Louviers is a premier retail center catering to the affluent Pike Creek, Hockessin, and Newark markets. Strategically located on Papermill Road in Newark, it offers quick access to Downtown Newark and the bustling Main Street, attracting steady foot traffic. With over 180,000 residents within a 5-mile radius, this high-end shopping destination provides excellent visibility and a strong customer base for retail tenants. Its upscale environment and prime location make it an ideal spot for retailers seeking to reach a discerning, well-established community.

The Shoppes at Louviers is conveniently located on Papermill Road in Newark, DE, just across from Bank of America's Deerfield site and WL Gore Headquarters. Situated just south of Thompson Station Road and north of Kirkwood Highway, this prime location offers easy access and excellent visibility in a bustling commercial area.

PROPERTY DETAILS

- **Available: 1,504-1,600 SF**
 - > **Unit 104:** 1,504 SF (former cleaners)
 - > **Unit 404:** 1,600 SF (former State Farm)
- **Lease Rate:** Please contact listing agent Ample
- parking for tenants and guests On-site fitness
- center and food options Easy access to major
- transportation routes

DEMOGRAPHICS AT A GLANCE	1 MILE	3 MILES	5 MILES
Total Population	3,069	56,128	129,613
Total Households	1,236	19,960	49,083
Average HH Income	\$116,492	\$105,237	\$117,007
Median Age	44	38	41

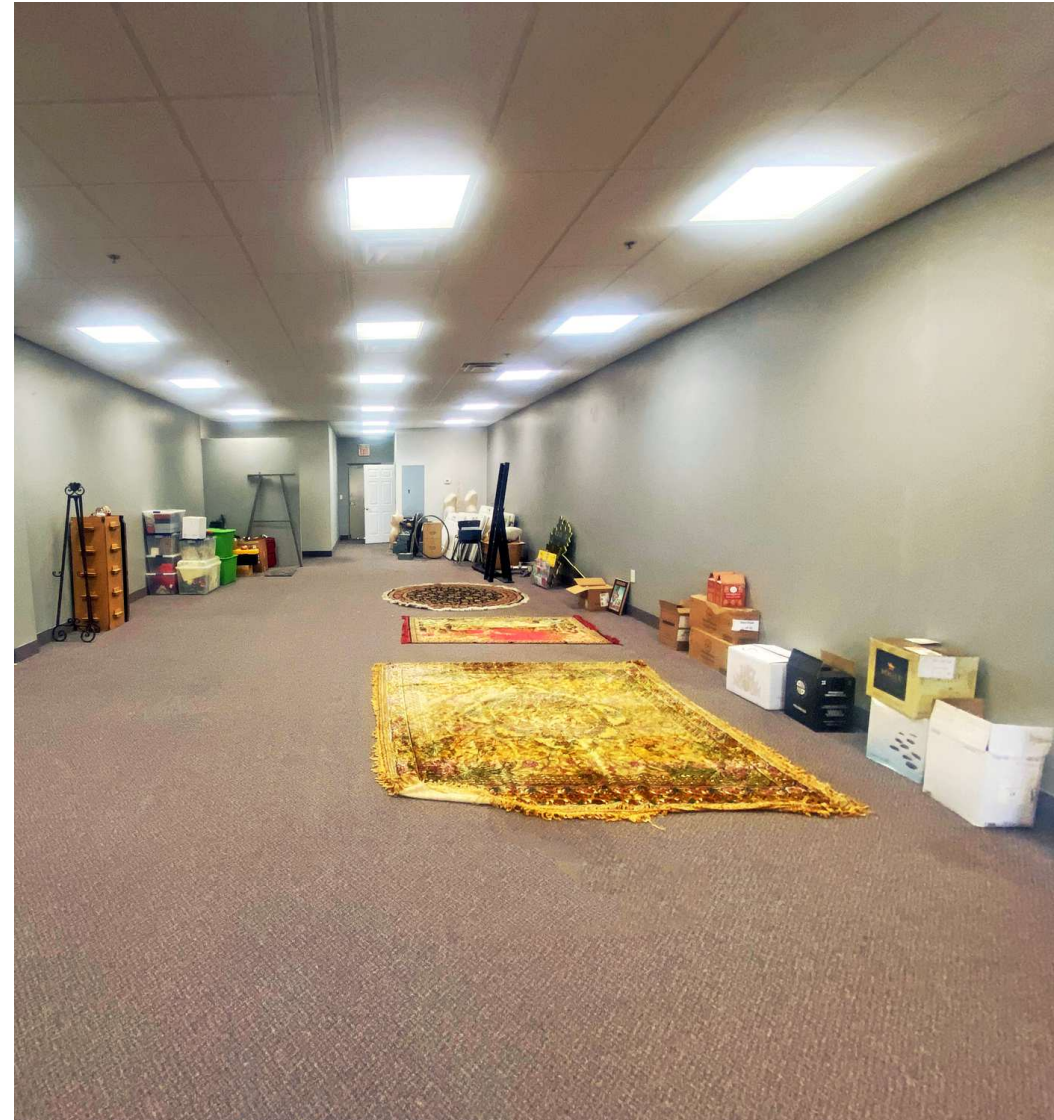
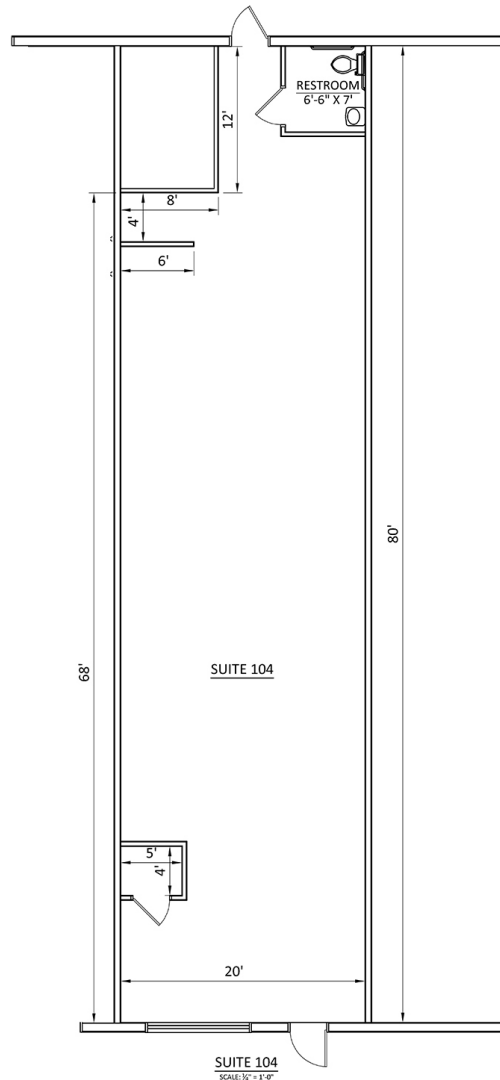


For More Information, Contact:

Dann Gladnick
dgladnick@dsmre.com
302.283.1800 Office
302.540.8969 Cell

Dan Wham
dwham@dsmre.com
302.283.1800 Office
302.249.9744 Cell

DSM Commercial
Real Estate Services
3304 Old Capitol Trail
Wilmington, DE 19808
dsmre.com



For More Information, Contact:

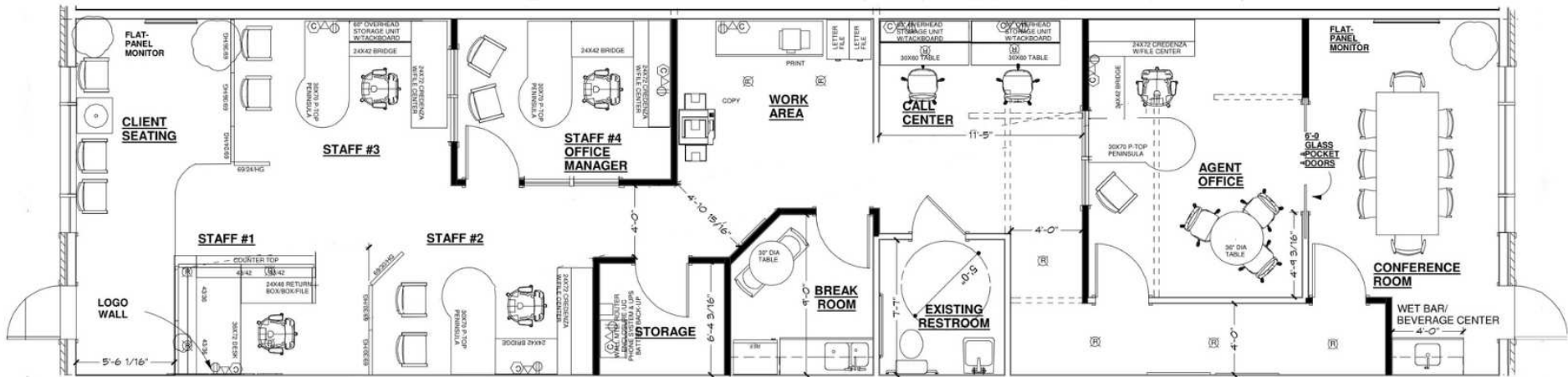
Dann Gladnick
dgladnick@dsmre.com
302.283.1800 Office
302.540.8969 Cell

Dan Wham
dwham@dsmre.com
302.283.1800 Office
302.249.9744 Cell

DSM Commercial
Real Estate Services
3304 Old Capitol Trail
Wilmington, DE 19808
dsmre.com



Suite 404 - 1,600 SF

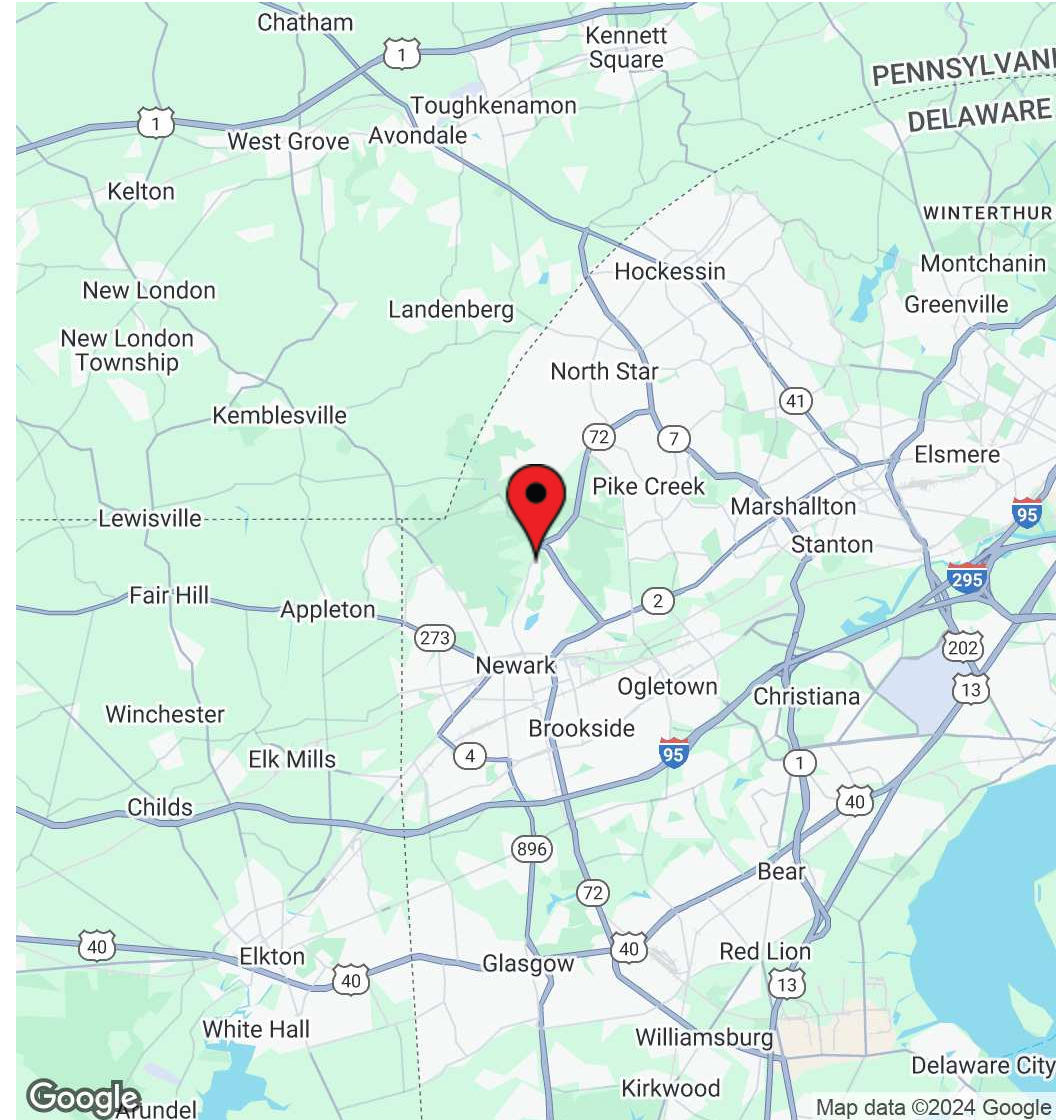
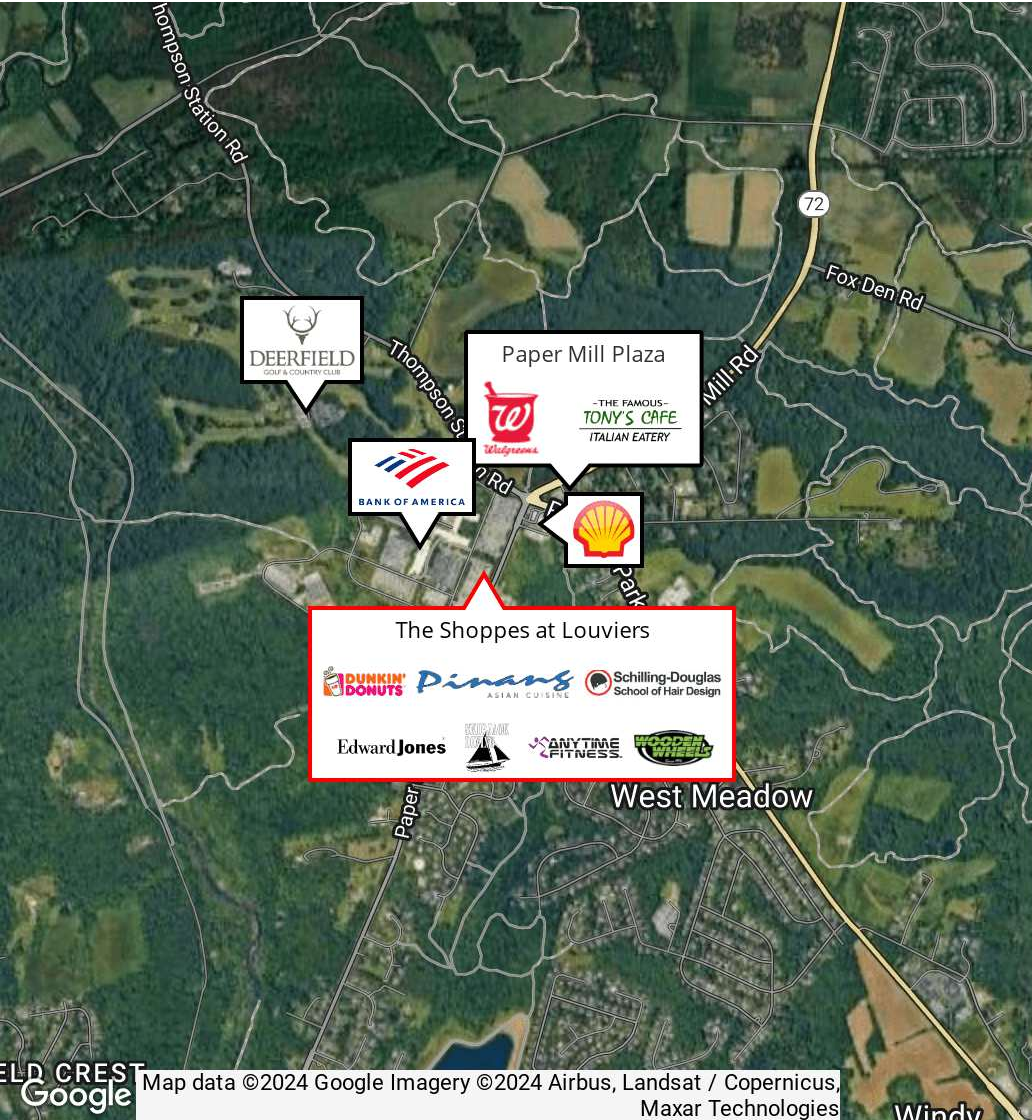


For More Information, Contact:

Dann Gladnick
dgladnick@dsmre.com
302.283.1800 Office
302.540.8969 Cell

Dan Wham
dwham@dsmre.com
302.283.1800 Office
302.249.9744 Cell

DSM Commercial
Real Estate Services
3304 Old Capitol Trail
Wilmington, DE 19808
dsmre.com



For More Information, Contact:

Dann Gladnick
dgladnick@dsmre.com
302.283.1800 Office
302.540.8969 Cell

Dan Wham
dwham@dsmre.com
302.283.1800 Office
302.249.9744 Cell

DSM Commercial
Real Estate Services
3304 Old Capitol Trail
Wilmington, DE 19808
dsmre.com