



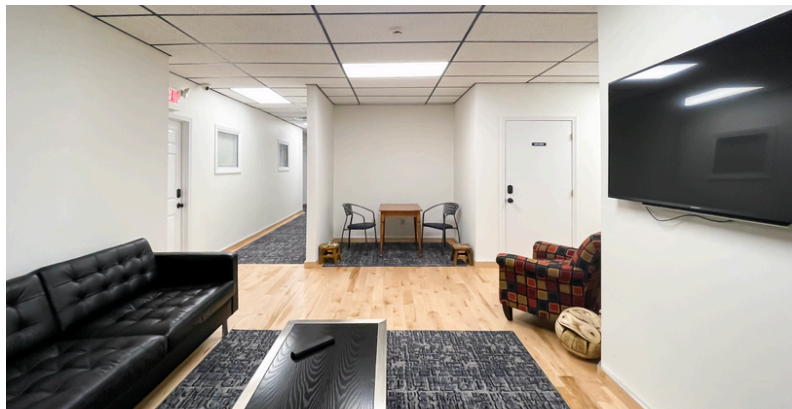
2095 S MAIN STREET | WATERBURY, CT

2 units available

(860) 815-8800

contact@doverbenedictgroup.com

www.doverbenedictgroup.com



- Private entrances (front and back)
- Security camera system for public areas and parking included with 24HR remote viewing access

- Cleaning services for common public areas included
- Snow removal included
- Professional landscaping included

- Common public areas in complex for additional restrooms and breakroom
- Common furnished lounge
- Flexible lease term
- Convenient location





2095 S MAIN STREET | WATERBURY, CT
3,500 SF | \$2,500 Per Month + Utilities

(860) 815-8800

contact@doverbenedictgroup.com

www.doverbenedictgroup.com



3,500 SF +/- OPEN FLOOR PLAN

\$2,500/month plus utilities

**Pricing negotiable dependent on landlord's participation for build-out*

Suite A has access to common corridor with building's staff lounge and additional client seating area. It has new LED lighting. Time to select your new flooring and paint!

contact@doverbenedictgroup.com | doverbenedictgroup.com | (860) 815-8800



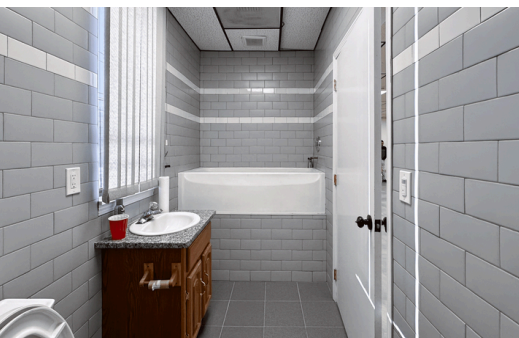
the
dover
benedict
group

2095 S MAIN STREET | WATERBURY, CT
734 SF | \$1,500 Per Month Utilities Included

(860) 815-8800

contact@doverbenedictgroup.com

www.doverbenedictgroup.com

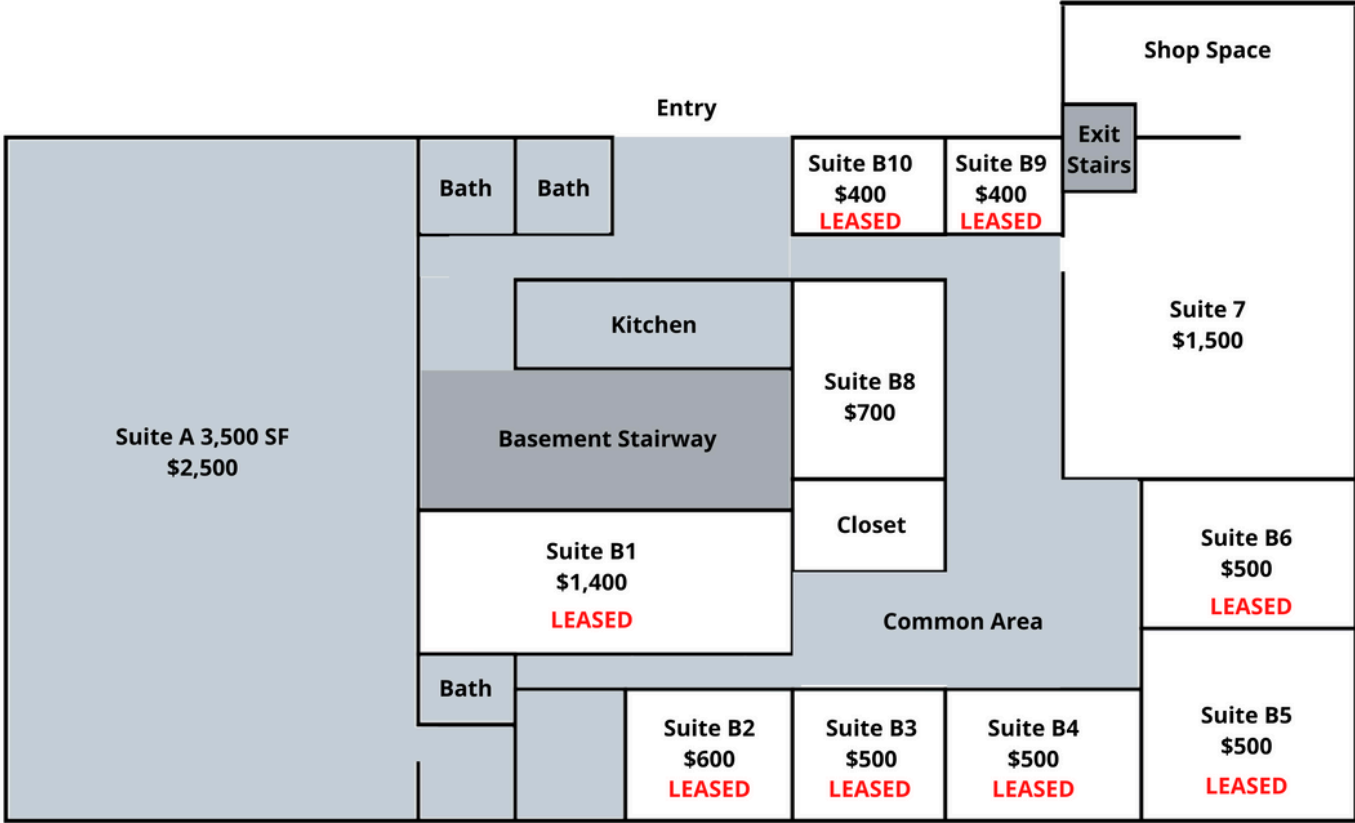


734 sf of office space and 600 sf garage.
Renovated office suite with private restroom attached to a garage/storage.
All utilities and WiFi included!
The office is renovated with new floors, LED lighting, private restroom.

contact@doverbenedictgroup.com | doverbenedictgroup.com | (860) 815-8800

the
dover
benedict
group

Floor Plan



Location

