

820 SECOND AVENUE

Between 43rd and 44th Streets

MIDTOWN EAST
MANHATTAN | NY



LOCATION

Between 43rd and 44th Streets

SPACE

Unit 6C: Approx. 2,740 SF

MAINTENANCE

\$23,340 per annum

TAXES (25/26)

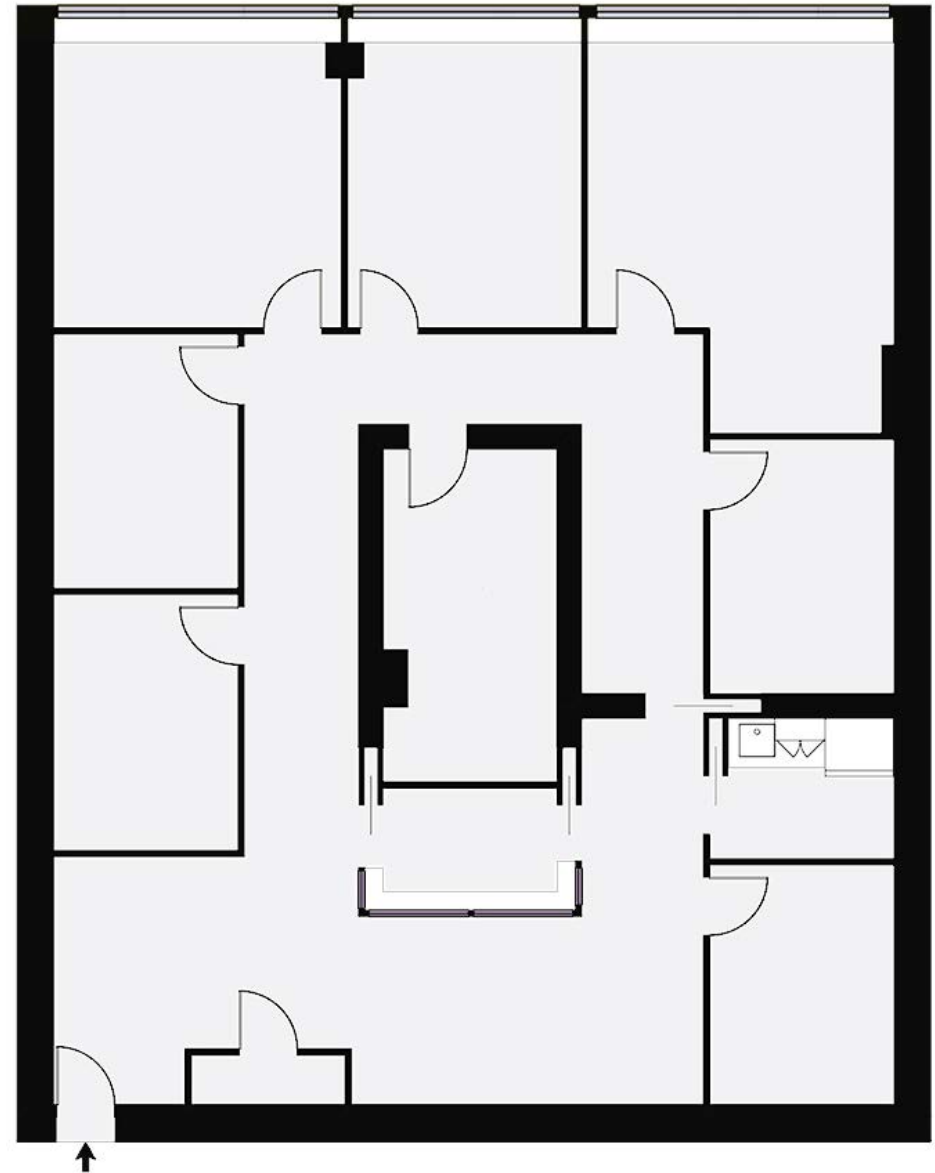
\$26,668

ASKING PRICE

Upon Request

PROPERTY DESCRIPTION

- Currently Northeast Regional Epilepsy Group
- Located two blocks from Grand Central Station
- Close proximity to the Ford Foundation Center, United Nations, Sparks Steak House, Sushi Yasuda, Chrysler Building, and One Vanderbilt

SUBWAY LINES



820 SECOND AVENUE

Points of Interest



GRAND CENTRAL STATION

Grand Central Station is a Beaux-Arts masterpiece and one of New York City's most iconic landmarks, known for its soaring Main Concourse and celestial ceiling. Opened in 1913, it serves as a major transportation hub while blending historic elegance with daily urban life. Beyond trains, it's a destination in itself, filled with shops, dining, and hidden architectural details.



42ND STREET

42nd Street is one of New York City's most famous thoroughfares, stretching from the Hudson River to the East River through the heart of Manhattan. It's a crossroads of culture and commerce, home to landmarks like Times Square, Grand Central Terminal, and Bryant Park. Constantly buzzing, the street captures the city's energy from theater marquees to office towers.



THE UNITED NATIONS

The United Nations is an international organization founded in 1945 to promote peace, security, and cooperation among nations. Its headquarters in New York City serves as a global meeting ground where world leaders gather to address issues like diplomacy, human rights, and climate change. Symbolically neutral territory, the UN represents collective dialogue on the world's most pressing challenges.

LIAM BURTIS
212-202-9200
lburtis@judsoncre.com

<div>48th Street</div> <div> <div>Starbucks</div> <div>CVS</div> </div>	<div> <div>Stageplays Theatre</div> <div> <div>Dunkin'</div> <div>Mama Pho</div> <div>Verizon</div> </div> </div> <div>UN Plaza Grill</div>
<div>47th Street</div> <div> <div>FedEx</div> <div> <div>Hotel YMCA</div> <div>Vanderbuilt YMCA</div> <div>Barnea Bistro</div> </div> </div>	<div> <div>VoxLens</div> <div>Zara Terrace</div> </div>
<div>46th Street</div> <div> <div> <div>Dawa.46</div> <div> <div>Club Wyndham</div> <div>CHIRP</div> <div>Perfect BrowsNYC</div> <div>Basics Plus</div> </div> </div> </div>	<div> <div>Wireless Warehouse</div> <div> <div>Club Pilates</div> <div>Pennylane Coffee</div> </div> </div>
<div>45th Street</div> <div> <div> <div>Little Charlie Hotel</div> <div> <div>Duane Reade</div> <div>Ermina's by Westside Market</div> </div> </div> </div>	<div> <div> <div>La Trattoria Pizza</div> <div>Aji Sushi</div> <div>La belle tasse</div> <div>Subway</div> <div>Millennium Hilton</div> </div> </div>
<div>44th Street</div> <div> <div> <div>Le Pain Quotidien</div> <div>John's Coffee Shop</div> <div>The UPS Store</div> <div>The Casual Greek</div> </div> <div> <div>Starbucks</div> <div>TD Bank</div> <div>Hampton Inn</div> </div> </div>	<div> <div>820 SECOND AVENUE</div> <div> <div>Remi43 Flower & Coffee</div> <div>Pibu</div> </div> </div>
<div>43rd Street</div> <div> <div> <div>Sushi Yasuda</div> <div>Chase Bank</div> </div> <div> <div>Bank of America</div> <div>Osteria Laguna</div> </div> </div>	<div> <div> <div>Dunkin'</div> <div>[solidcore]</div> <div>Ground Central Coffee Company</div> </div> </div>
<div>42nd Street</div> <div> <div> <div>Gap Kids</div> <div>Club Champion</div> </div> <div> <div>Gap</div> <div>The Westin</div> <div>PIX11</div> </div> </div>	<div> <div> <div>Westgate New York</div> <div>Tudor City Tavern</div> </div> <div> <div>Sussex Wines & Spirits</div> </div> </div>
<div>41st Street</div> <div> <div> <div>Chase Bank</div> <div>Docks Oyster Bar</div> </div> <div> <div>New York Sports Club</div> </div> </div>	<div> <div> <div>United States Postal Service</div> <div>Audrey Burch</div> </div> <div> <div>Gristedes</div> </div> </div>
<div>40th Street</div>	