



Available

VIEW ONLINE 

18,000± SF Industrial Building

12624 Cypress Creek Dr.  
Eads, TN 38028

**HUNTER ADAMS, SIOR**  
Senior Vice President | Principal  
901 312 4915  
hunter.adams@colliers.com

**ED THOMAS, CCIM**  
VP of Retail & Multifamily Services  
901 312 4912  
ed.thomas@colliers.com

**COLLIERS**  
6363 Poplar Ave., Ste. 220  
Memphis, TN 38119  
901 375 4800

This document/email has been prepared by Colliers for advertising and general information only. Colliers makes no guarantees, representations or warranties of any kind, expressed or implied, regarding the information including, but not limited to, warranties of content, accuracy and reliability. Any interested party should undertake their own inquiries as to the accuracy of the information. Colliers excludes unequivocally all inferred or implied terms, conditions and warranties arising out of this document and excludes all liability for loss and damages arising there from. This publication is the copyrighted property of Colliers and /or its licensor(s). © 2025. All rights reserved. This communication is not intended to cause or induce breach of an existing listing agreement. Colliers Memphis



# Available

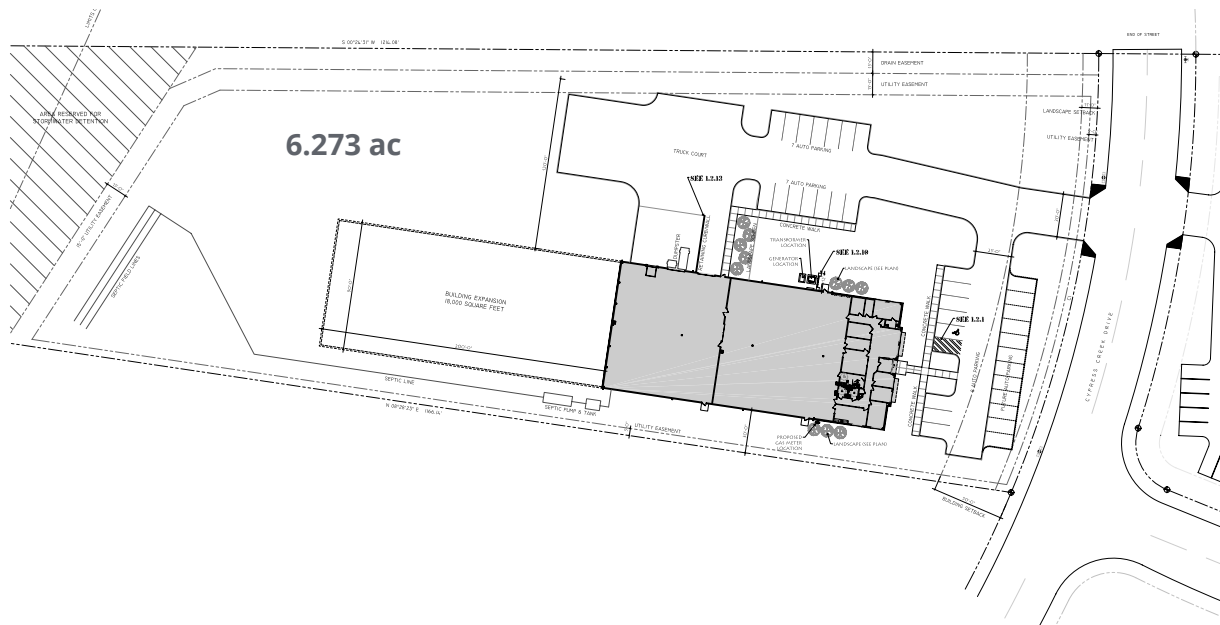


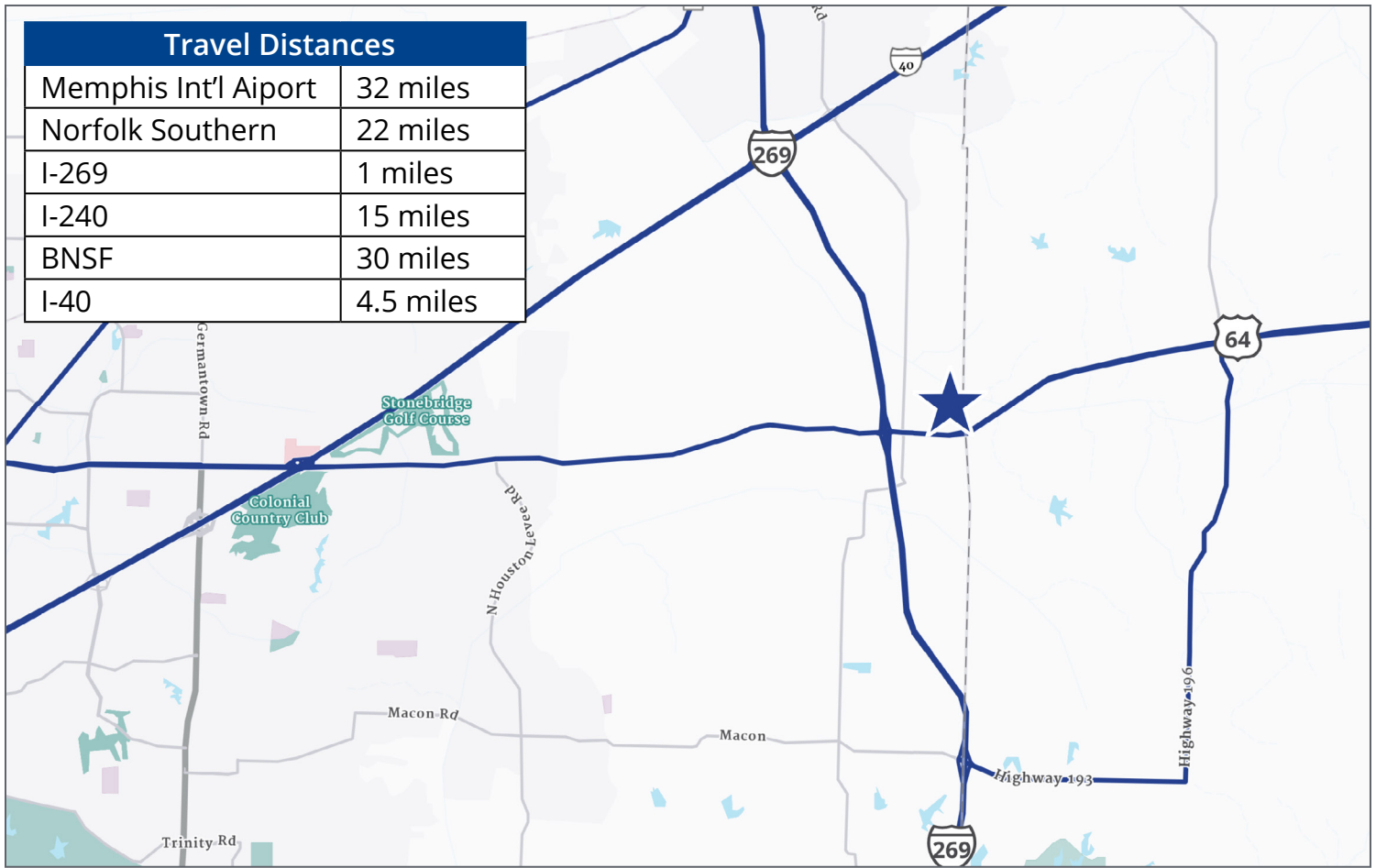
## Property Features

Northeast Submarket	HVAC capable in half of the warehouse
Light industrial zoning	20' -21' clear height
Built in 2012	48' x 43' column spacing
Security cameras	2 dock doors- 12w x 16h
Building - 18,000± SF	1 drive-in door - 12w x 16h
Lot - 6.27± AC	3-phase electrical; 800 amp/ 480v
Warehouse -14,760± SF	Air lines throughout; Two (2) air compressors
Office - 3,240± SF	TPO roof



# Available





In the Heart of . . .

## Memphis' Transportation



75% of the US can be reached within 20 hours by truck.



Memphis is one of 4 US cities served by 5 Class I rail systems.



The Port of Memphis is the 5th largest inland port in the US.



Memphis Int'l Airport is the busiest air cargo airport in the US.

## Our Mission

Maximize the potential of property to accelerate the success of our clients and our people.

**HUNTER ADAMS, SIOR**  
Senior Vice President | Principal  
901 312 4915  
hunter.adams@colliers.com

**ED THOMAS, CCIM**  
VP of Retail & Multifamily Services  
901 312 4912  
ed.thomas@colliers.com



6363 Poplar Ave. | Suite 220  
Memphis, TN 38119  
901 375 4800  
colliers.com/memphis