

**FOR LEASE**

# “Lantern Hill” Office Suites

**PENN'S GRANT REALTY**  
Corporation

**99 Lantern Drive**  
**Doylestown Borough, Bucks County, PA**

COMMERCIAL • INDUSTRIAL • INVESTMENT



**PRESENTED BY:** Kurt Eisenschmid, CCIM — Penn's Grant Realty Corporation  
2005 S Easton Rd, STE 306, Doylestown, PA • 215-489-3800 x3 • Kurt@pgr Realty.com • www.pgr Realty.com



**PROPERTY HIGHLIGHTS**

- Class "A" Office Building
- Abundant of Natural Light
- Easy access to Route 611 Bypass (1/10 mile)
- Restaurant & Retail Businesses Within One Block
- On-site Fitness Center

**AVAILABLE SUITES**

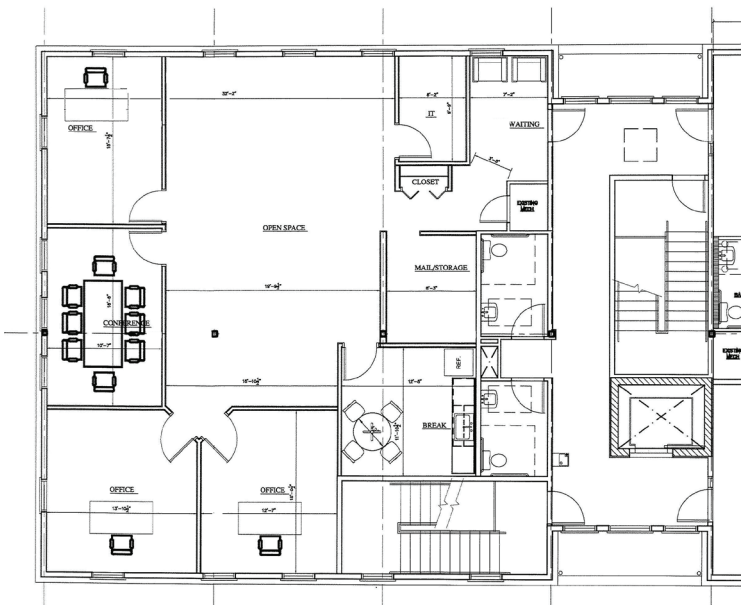
**SUITE 302**

Private Offices; Conference Room; Waiting Room; Kitchenette; Breakroom; Open Work Area (part of open work area can be converted to one or two additional private offices); Storage Area

Suite Size: ..... 2,153± SF

Location in Building: ..... 3rd Floor

Lease Price: ..... \$23 per Sq. Ft., plus utilities & cleaning







SUITE 302 - 2,153± SF



