

MURAL PARK

Loft Office @ 924 W 19th Place in Pilsen

AVISON
YOUNG



GET OUT OF THE LOOP

AND INTO THE PARK!

MURAL PARK



Welcome to Mural Park. Located in Pilsen, one of Chicago's most culturally rich, historically significant and active neighborhoods. Mural Park is a creative office and commercial redevelopment of two, 100,000 square foot loft buildings.

Mural Park will be a primary destination along the City of Chicago's new El Paseo, a 4 mile bicycle and walking "rails-to-trails" corridor connecting University Village with Pilsen and Little Village. A large public plaza featuring local art installations, community gathering amenities and year round gardens will connect the two 100-year old buildings of Mural Park.

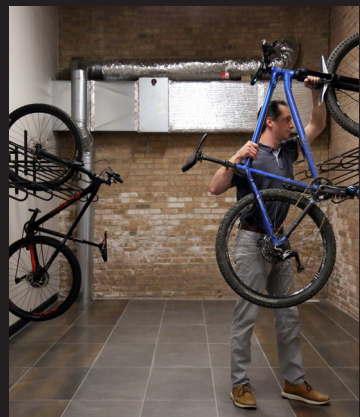
Why Pilsen

Listed as one of *Forbes' Coolest Neighborhoods in the World* for its thriving arts scene, delicious food, local craftsman and rich history, Pilsen is truly special. Mural Park, will embrace Pilsen's roots and authenticity, while catering to today's creative tenants. El Paseo will add another reason to come to Pilsen as the old railroad bed-turned cycling and walking path will complement the park's great location and amenities. Mural Park is just 8 minutes south of Randolph Street and is easily accessible via I-90/I-290, I-55 with CTA and Metra stations nearby.

Day in the life...



THE RIGHT AMENITIES



A+ Lobby

Comfortable lobby with massive windows, high ceilings & abundant natural light.



Greenspace

A beautifully landscaped park that will serve as an outdoor art gallery and meeting place.



El Paseo

Mural Park is situated along Pilsen's new 4-mile bicycle and walking path.



Brewery on Site

5 Rabbit Cervecería brings energy, passion and amazing richness of Latin culture and cuisine to the world of craft beer.



Coffee Shop

On-site coffee and small bites provided by local roaster, Back of the Yards Coffee.



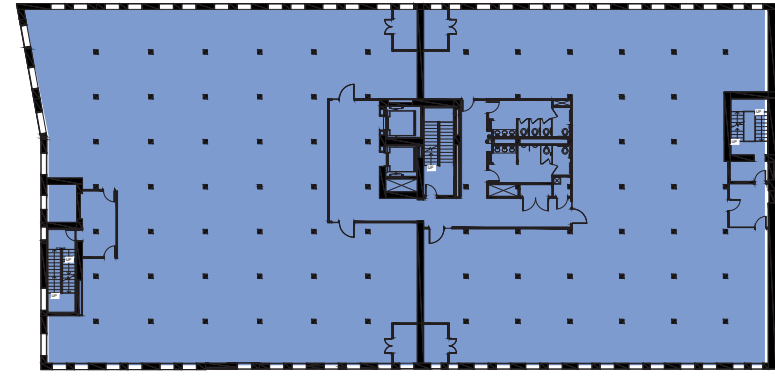
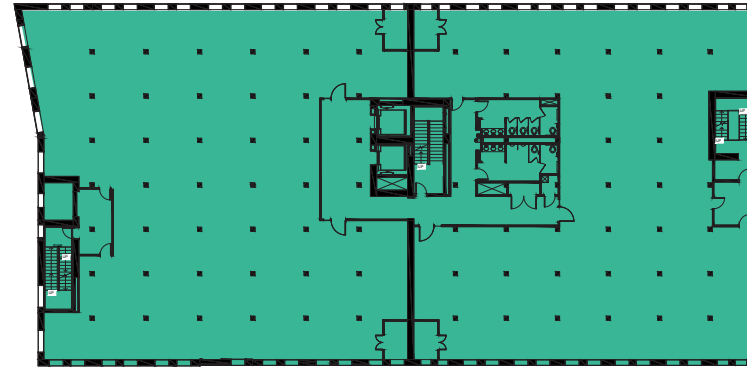
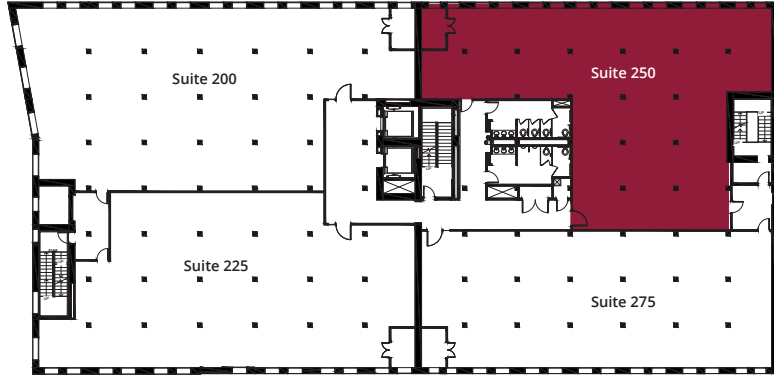
Dog Friendly

Mural Park is a dog friendly office park, so go ahead and bring your pup to work.

Availabilities

Large Block
Available

42,418 SF
Contiguous



■ Suite 250 - 4,718 SF

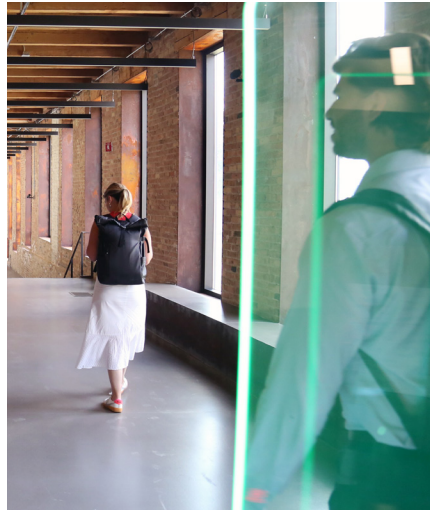
■ Suite 300 - 10,627 SF

■ Suite 375 - 3,164 SF

■ 4th Floor - 21,209 SF

■ 5th Floor - 21,209 SF





MURAL PARK

Danny Nikitas

Principal

312.753.8794

danny.nikitas@avisonyoung.com

Konstantine T. Sepsis

Principal

312.273.4501

konstantine.sepsis@avisonyoung.com

AVISON
YOUNG