

A photograph of the exterior of a brick building. The entrance features a dark brown awning with the address "2200 BROENING" in large, white, three-dimensional letters. To the right of the entrance is a large green bush. A small sign is visible on the brick wall near the door.

**2200
BROENING**

POINT BREEZE BUSINESS CENTER

**2200 BROENING HIGHWAY
BALTIMORE, MD 21224**



HARRINGTON
COMMERCIAL REAL ESTATE SERVICES

POINT BREEZE



IDEAL FOR PORT OF BALTIMORE
RELATED BUSINESS

OTHER BUILDING INFORMATION



Institutional Ownership
with management on-site



Abundant
free parking



24/7 external
building security



Suites from approximately
600- 7,000 SF

INCENTIVES

HUB & Enterprise Zones

OWNERSHIP:



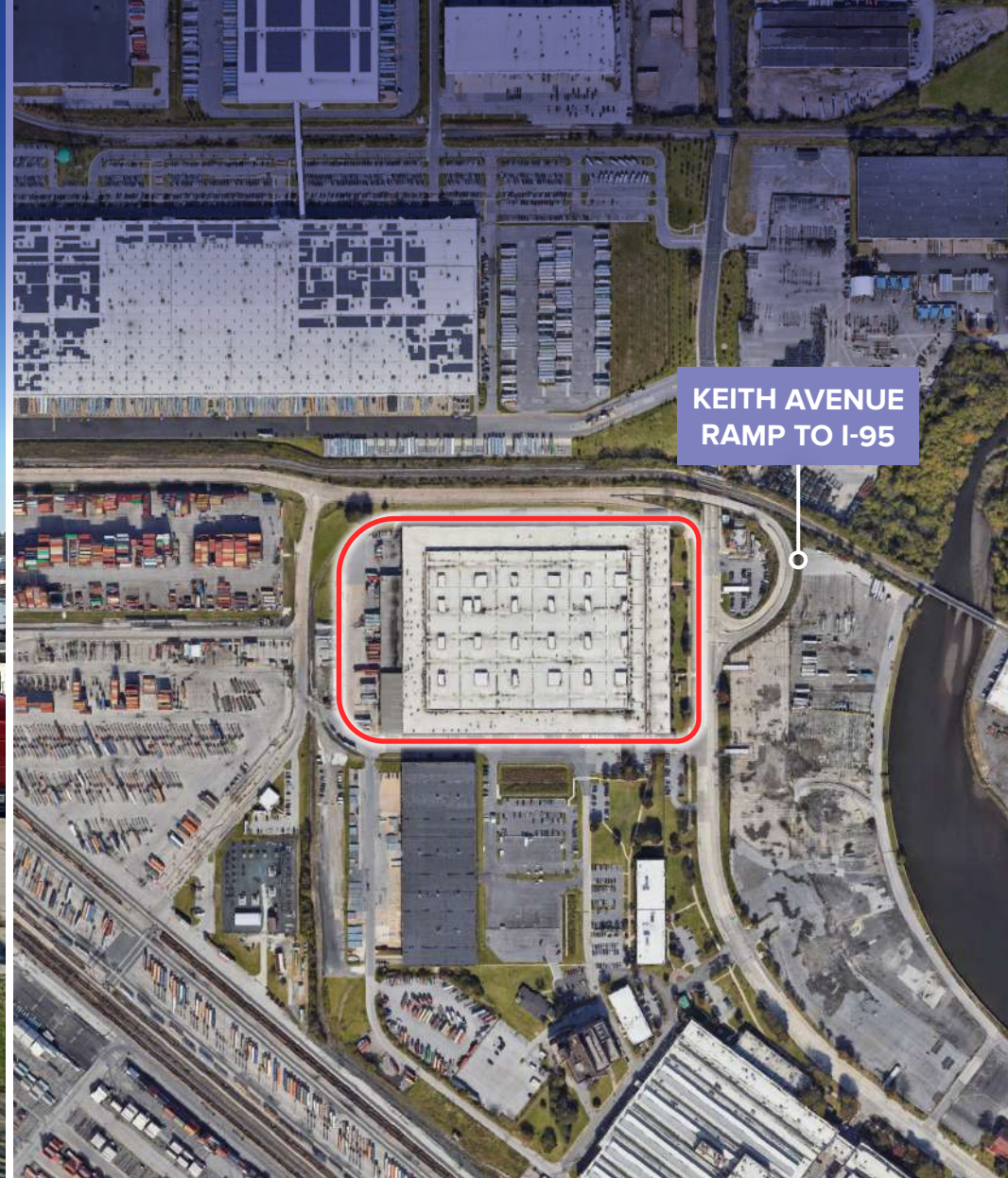
RUKERT
TERMINALS CORPORATION





Minutes from bustling Canton Crossing shopping & surrounding residential

First exit of I-95 from the Fort McHenry Tunnel



Keith Avenue ramp located at the property

Campus setting at the Point Breeze Industrial Park

Adjacent to the Seagirt Marine Terminal, Port of Baltimore

NEARBY DESTINATIONS



**JOHNS HOPKINS
HOSPITAL**

INNER HARBOR



FELL'S POINT



BAYVIEW



**CANTON
CROSSING**



**FORT
MCHENRY**



2200 Broening Hwy

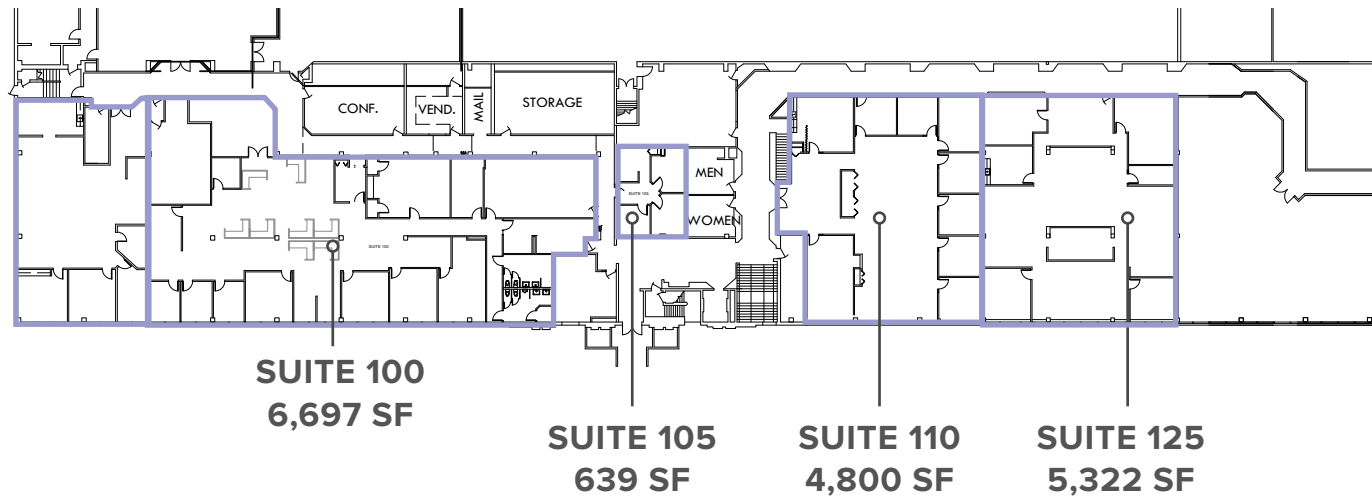
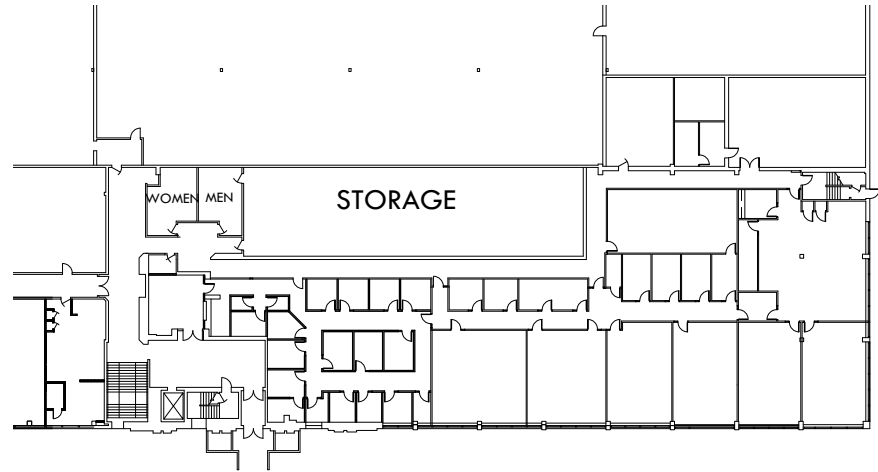


**SEAGIRT MARINE
TERMINAL**



POINT BREEZE

2200 BROENING HIGHWAY
BALTIMORE, MD 21224



TERRI HARRINGTON
Managing Principal

410-302-2443

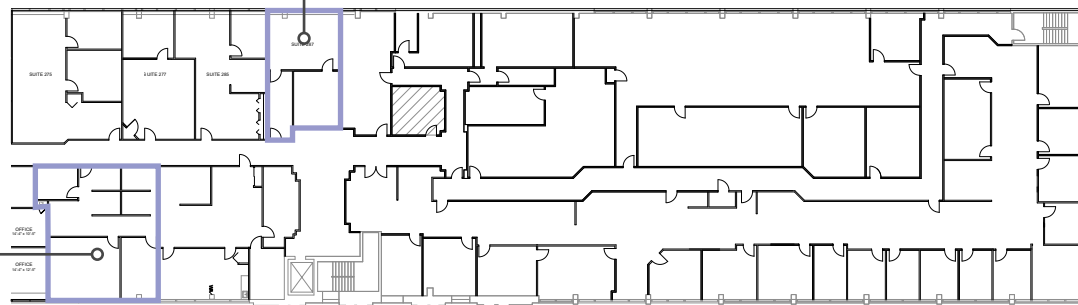
terri@harringtoncommercial.com

POINT BREEZE

2200 BROENING HIGHWAY
BALTIMORE, MD 21224

SUITE 287
716 SF

SUITE 270
1,144 SF



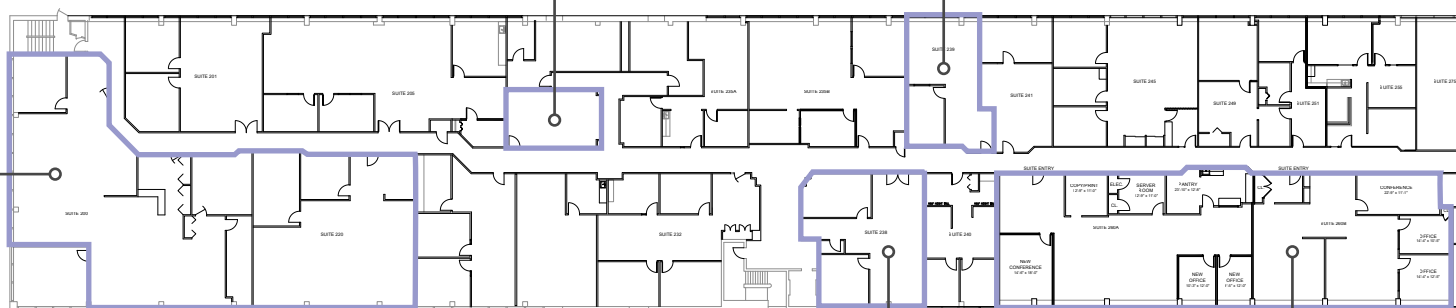
SUITE 225
410 SF

SUITE 239
902 SF

SUITE 210
5,461 SF

1,261 SF

SUITE 260
4,778 SF



TERRI HARRINGTON
Managing Principal

410-302-2443
terri@harringtoncommercial.com

CONTACT INFORMATION

TERRI HARRINGTON
Managing Principal

410-302-2443
terri@harringtoncommercial.com

1200 Steuart Street #817
Baltimore, MD 21230

www.harringtoncommercial.com



HARRINGTON
COMMERCIAL REAL ESTATE SERVICES

