

BETTY'S HOUSE PROGRAM:

BETTY'S WISH, A WASHINGTON COUNTY NONPROFIT ORGANIZATION ESTABLISHED IN 2017, OPENS AN ADULT MEDICAL DAY CARE, BETTY'S HOUSE.

BETTY'S HOUSE WILL BE OPERATED BY BETTY'S WISH, A 501(C) 3 NONPROFIT ORGANIZATION BASED IN WASHINGTON COUNTY, LOCATED AT 16202 NATIONAL PIKE, HAGERSTOWN, MD 21740. OUR CORE TEAM HAS A COMBINED TOTAL OF 71 YEARS EXPERIENCE HELPING THE GERIATRIC POPULATION IN A PROFESSIONAL CAPACITY. OUR GOAL IS TO CREATE STABLE, FULL-TIME EMPLOYMENT TO INCLUDE A GENEROUS WAGE AND BENEFITS PACKAGE.

OUR PROJECTED HOURS OF OPERATION WILL BE 8:00 AM TO 4:00 PM. OUR DAILY CENSUS WILL ASSIST UP TO 21 PARTICIPANTS. HOWEVER, WE WILL BEGIN WITH 7 PARTICIPANTS AND INCREMENTALLY INCREASE UNTIL WE REACH 21 PARTICIPANTS. THE STAFFING RATIO WILL ABIDE BY THE COMAR REGULATIONS OF 1:7 OR BY THE NEEDS OF EACH PROGRAM PARTICIPANT AS DETERMINED IN THE ADULT DAY CARE ASSESSMENT PLANNING SYSTEM (ADCAPS). OUR STAFF WILL CONSIST OF THE FOLLOWING:

- DIRECTOR REGISTERED NURSE CNA/ CMT
- TRANSPORTATION COORDINATOR ACTIVITIES COORDINATOR PROGRAM ASSISTANTS

BETTY'S HOUSE ADULT MEDICAL DAY CARE PROVIDES CRUCIAL MEDICAL AND RELATED SERVICES TO SENIORS WITH DIFFICULTIES RANGING FROM LIMITED MOBILITY TO INTELLECTUAL AND DEVELOPMENTAL DISABILITIES WITH SERVICES OFFERED SUCH AS SKILLED NURSING CARE, SOCIAL WORK SUPPORT AND NUTRITIONAL RESOURCES, SENIORS AT RISK OF INSTITUTIONAL PLACEMENT CAN MAINTAIN THEIR INDEPENDENCE. AT BETTY'S HOUSE, WE HELP TO REDUCE THE ISOLATION, INACTIVITY, AND DEPRESSION ADULTS MAY EXPERIENCE BY CONNECTING THEM WITH OTHERS WHO ARE IN THE SAME STAGE OF LIFE OR FACING SIMILAR CIRCUMSTANCES. WE DESIGN OUR ACTIVITIES AND PROGRAMS TO REFLECT THE PARTICIPANT'S INTERESTS AND LIFE EXPERIENCES. TO FOLLOW ARE SOME OF THE SERVICES WE PROVIDE.

- CLINICAL SERVICES**
- ON-SITE REGISTERED NURSE
 - INDIVIDUALIZED CARE PLANNING WITH DAILY NURSE ASSESSMENTS
 - LICENSED SOCIAL WORKER SERVICES
 - BLOOD PRESSURE MONITORING
 - MEDICATION ADMINISTRATION AND INJECTIONS
 - TOILETING, PERSONAL CARE AND HYGIENE
 - DIABETES MANAGEMENT/BLOOD GLUCOSE MONITORING
 - WOUND CARE

- ENGAGING ACTIVITIES**
- DAILY EXERCISE PROGRAM
 - CURRENT EVENTS DISCUSSION
 - REMINISCENCE GROUPS
 - GARDENING
 - GAMES AND CRAFTS
 - MUSIC THERAPY
 - FIELD TRIPS
 - GUEST SPEAKERS
 - ART THERAPY
 - PARTIES AND SPECIAL CELEBRATIONS

- TRANSPORTATION**
- WHEELCHAIR ACCESSIBLE TRANSPORTATION TO AND FROM CENTERS

- MEALS**
- OVERSIGHT BY A REGISTERED DIETITIAN
 - NUTRITIOUS MEALS AND SNACKS

SPECIAL EXCEPTION NOTE:

THE BOARD OF ZONING APPEALS OF WASHINGTON COUNTY MARYLAND GRANTED A SPECIAL EXCEPTION TO ESTABLISH A NURSING/CONVALESCENT HOME ON PROPERTY KNOWN AS 16202 AND 16118 NATIONAL PIKE, HAGERSTOWN, MARYLAND. THE SPECIAL EXCEPTION WAS GRANTED UNDER APPEAL AP2022-047.

NOTES:

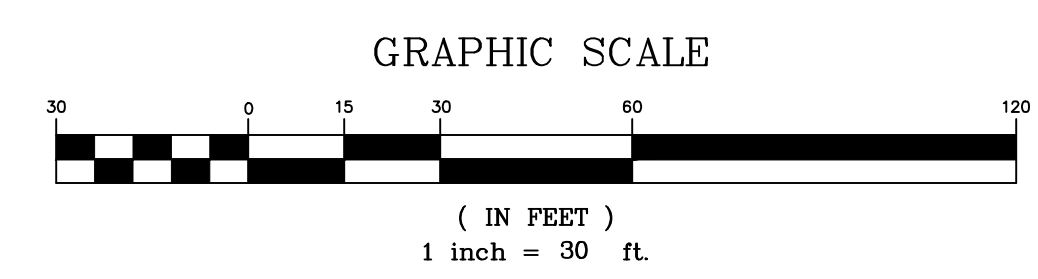
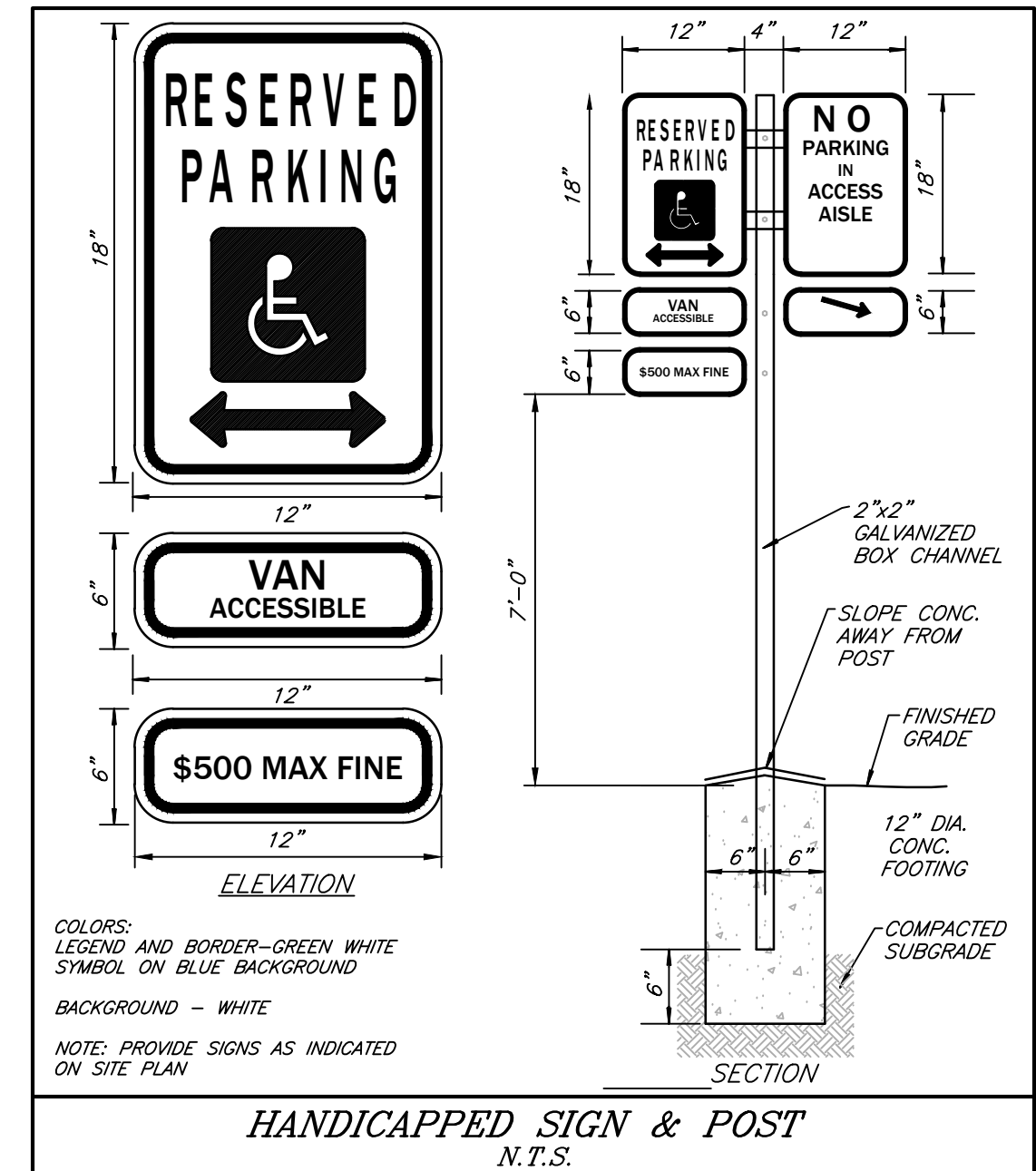
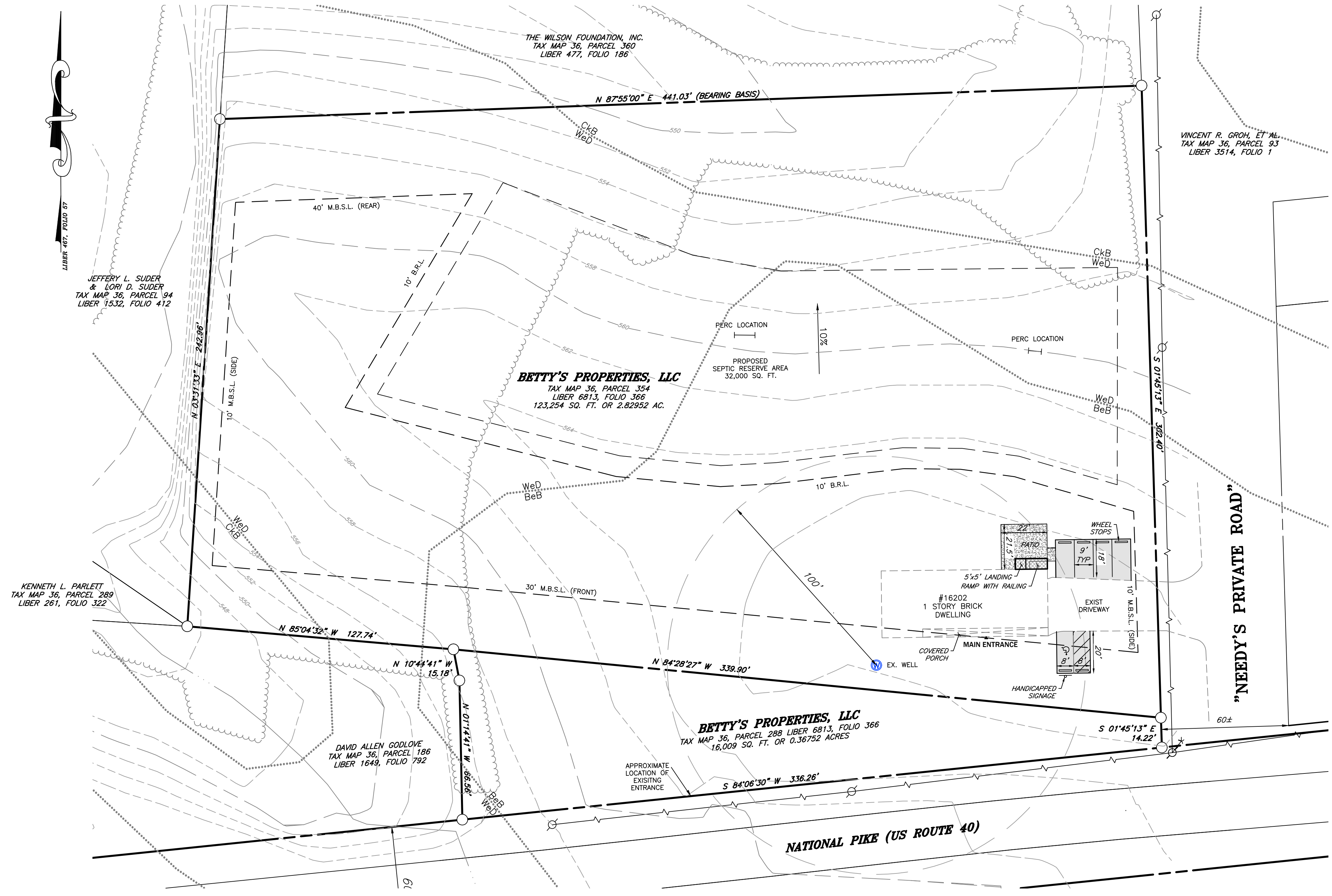
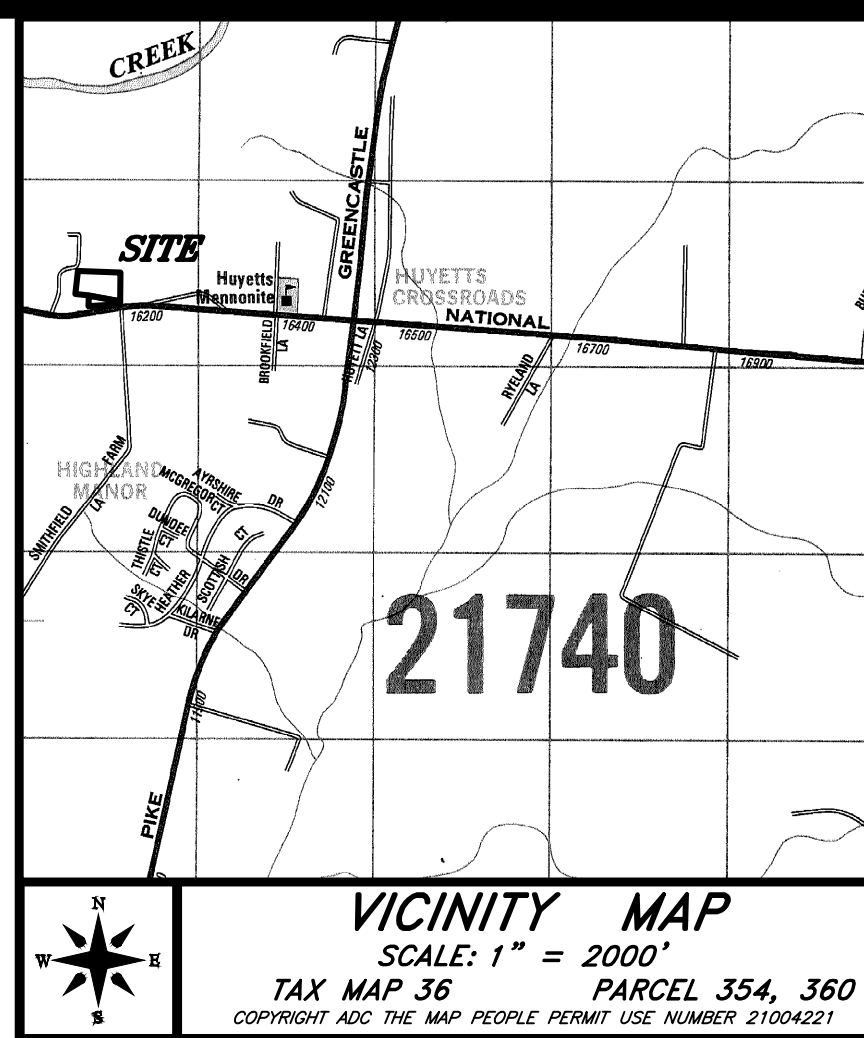
1. ALL BEARINGS ARE BASED ON THE NORTH 87° 55' EAST 441.06 LINE DESCRIBED IN A DEED DATED FEBRUARY 10, 1966 AND RECORDED AMONG THE LAND RECORDS OF WASHINGTON COUNTY IN LIBER 467 AT FOLIO 57.
2. INITIAL FIELD WORK WAS COMPLETED JANUARY 25, 2022
3. PERC TESTING WAS COMPLETED MARCH 14, 2022
4. VERTICAL DATUM SHOWN HEREON IS BASED ON NAVD88 FROM WASHINGTON COUNTY 2' TOPO.
5. PROPERTY IS ZONED RT - RESIDENTIAL TRANSITION.
6. B.R.L. = BUILDING RESTRICTION LINE
7. M.B.S.L. = MINIMUM BUILDING SETBACK LINE

SOILS

BuB	BERK'S CHANNERY SILT LOAM 3 TO 8 PERCENT SLOPES.....	47%
CKB	CLEARBROOK CHANNERY SILT LOAM 0 TO 8 PERCENT SLOPES.....	12%
WED	WEIKERT VERY CHANNERY SILT LOAM 15 TO 25 PERCENT SLOPES.....	41%

QUANTITIES

PROP PATIO / RAMP = 473 SF
 PROP NEW PAVEMENT = 1,002 SF
 PROP SIDEWALK = 25 SF
 TOTAL = 1,500 SF



FOX & ASSOCIATES INC.
 Est. 1966
 Copyright © 2024

FOX & ASSOCIATES, INC.
 ENGINEERS • SURVEYORS • PLANNERS

82 WORMANS MILL COURT
 SUITE 'C'
 FREDERICK, MD. 21701
 PHONE: (301) 895-0880
 FAX: (301) 293-6009
 Email: foxassoc@foxassocialestinc.com
 www.foxassocialestinc.com

DATE	REVISION	DRAWN BY

EXHIBIT
BETTY'S PROPERTY, LLC
LIBER 6813, FOLIO 366
 16118 & 16202 NATIONAL PIKE
 HAGERSTOWN, WASHINGTON COUNTY, MARYLAND

SCALE: 1" = 30'

PROJECT NO. 21-43908
 DRAWING NO. D-9394
 DATE: JUNE 2024
 DRAWN BY: WMH
 CHECKED BY: SCC

SHEET 1 OF 1