



Commercial and Industrial Real Estate
Sales and Leasing
Property Management

Joey Betbeze
3345 Halls Mill Road
Mobile, Alabama 36606

Office: 251.476.4111
Cell: 251.554.8145

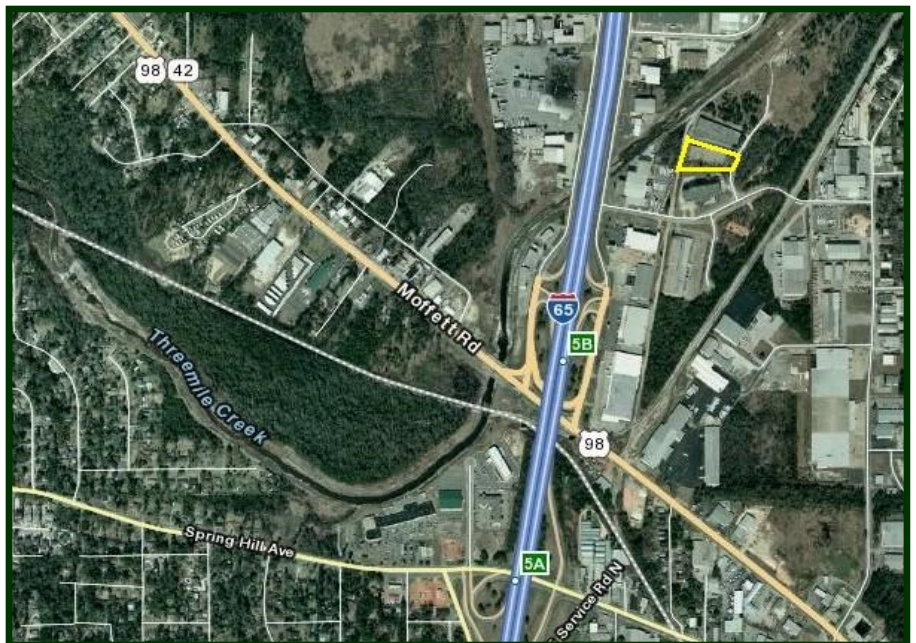
JoeyBetbeze@BetbezeRealty.com
www.BetbezeRealty.com

2,700 S.F. OFFICE/WAREHOUSE FOR

**1125 Corporate Drive North—Suite 207-B
Mobile, Alabama 36607**



Approximately 2,700 square foot office and warehouse facility for Lease. 1,260 s. f. of office space and 1,440 s. f. of open warehouse space, 1,260 s.f. of mezzanine space.



- 2,700 Square Feet available.
- Tilt-up Concrete Construction
- 3 Phase Power.
- 14' eave heights.
- One 10' x 10' Overhead Door.
- Zoned I-1 (Light Industrial)
- **\$1,950.00/Mo.**

Located approximately 1/2 mile from the intersection of Highway 98 (Moffett Road) and Interstate 65. Total building size is 24,500 s.f. This is the only vacancy.

The information above has been obtained from sources believed reliable. While we do not doubt its accuracy we have not verified it and make no guarantee, warranty or representation about it. It is your responsibility to independently confirm its accuracy and completeness. Any projections, opinions, assumptions, or estimates used are for example only and do not represent the current or future performance of the property. The value of this transaction to you depends on tax and other factors which should be evaluated by your tax, financial, and legal advisors. You and your advisors should conduct a careful, independent investigation of the property to determine to your satisfaction the suitability of the property for your needs.

1125 Corporate Drive North
Suite 207
5,400 Square Feet
All Dimensions are Approximate

207-B

207-A

