

EVERYTHING YOU NEED, RIGHT WHERE YOU WANT TO BE.



29TH AVENUE **TOWN CENTER**



7350 & 7341-7357 EAST 29TH AVENUE | DENVER, CO 80238

THE WORLD'S AMENITIES AT YOUR DOOR.

7350 & 7341-7357 East 29th Avenue is located in Central Park, a community of twelve neighborhoods in the heart of Colorado. In 1995 when the opening of Denver International Airport meant the closing of Stapleton International Airport, Denver had the unique opportunity to transform 7.5 square miles of runways, concourses and terminals into a beautiful new community. Central Park is a pedestrian-friendly, mixed-use business environment with everything you need a short walk or bike ride away.

CENTRAL PARK COMMUNITY



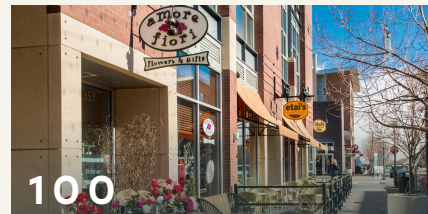
14,000 HOMES PLANNED AT COMPLETION

9,000 single family (including townhomes), 5,000 apartments



70

tasty restaurants



100

stores and shops



AGES 33-44

largest portion of population



3.3 MILLION SF

existing flex/industrial space



2.6 MILLION SF

retail space has already been developed



8 MINUTES

to Stanley Marketplace



82

walk score



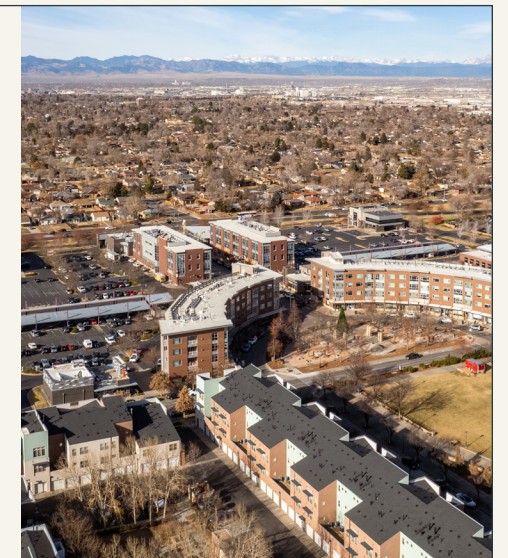
87

bike score



DEMOGRAPHICS

2022 total population	78,949
2022 households	24,771
2022 housing units	26,180
2022 median household income	\$107,473
2022 median home value	\$481,611





29TH AVENUE
TOWN CENTER

FOR LEASING INFORMATION:

VICTORIA BLACKSTOCK
+1 303 981 2536
victoria.blackstock@jll.com

DON MISNER
+1 303 217 7957
don.misner@jll.com

Although information has been obtained from sources deemed reliable, neither Owner nor JLL makes any guarantees, warranties or representations, express or implied, as to the completeness or accuracy as to the information contained herein. Any projections, opinions, assumptions or estimates used are for example only. There may be differences between projected and actual results, and those differences may be material. The Property may be withdrawn without notice. Neither Owner nor JLL accepts any liability for any loss or damage suffered by any party resulting from reliance on this information. If the recipient of this information has signed a confidentiality agreement regarding this matter, this information is subject to the terms of that agreement. ©2023. Jones Lang LaSalle IP, Inc. All rights reserved.

