



**MARTIN
COMMERCIAL
GROUP**
Commercial Real Estate Services



AVAILABLE FOR LEASE

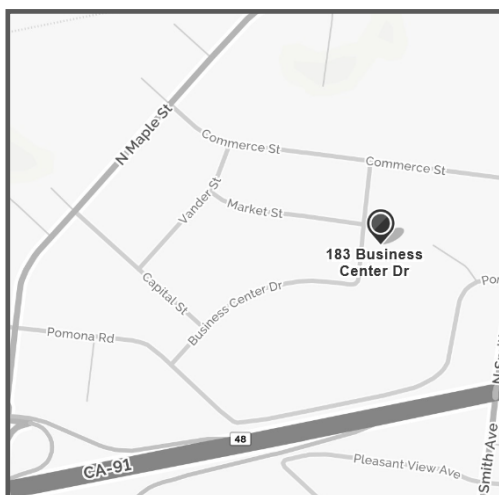
6,776 SF FREE STANDING INDUSTRIAL BUILDING W/ FENCED YARD!



189 Business Center Drive, Corona

FREE STANDING INDUSTRIAL BLDG.

- **6,776 Sq. Ft.**
- **Aprox. 800 Sq. Ft. of Office Reception + 2 Offices**
- **Fenced Yard**
- **2 Ground Level Loading Doors**
- **200A Power (verify)**
- **17' Warehouse Clearance**
- **Ample Parking**
- **Professionally Managed**
- **Easy Freeway Access**



**For More Information
Please Contact:**

ERIN LAGOMARSINO

DRE # 00992436

714-241-1141

elagomarsino@mcgre.com



1495 E. Warner Ave.
Santa Ana, CA 92705

*Serving Orange County and
the Inland Empire Since 1953*

The information contained herein has been obtained from sources we deem reliable. While we have no reason to doubt its accuracy, we do not guarantee it.



MARTIN
COMMERCIAL
GROUP

Commercial Real Estate Services



**1495 E. Warner Avenue
Santa Ana, CA 92705**

*Since 1953...
~Orange County~
Inland Empire*

**For More Information
Please Contact:**

ERIN LAGOMARSINO

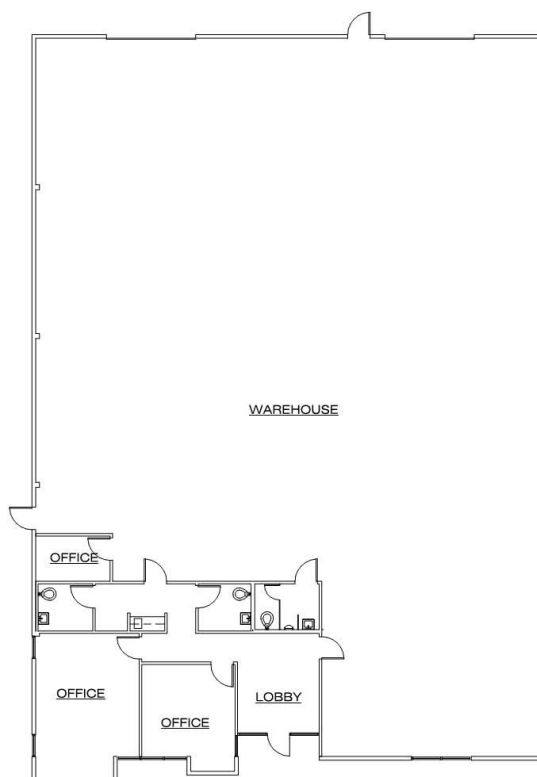
elagomarsino@mcre.com
DRE # 00992436

714-241-1141



3/13/2009 10:48:27 AM

**189 BUSINESS CENTER DRIVE
Corona, CA**



6,779 sf

FLOOR PLAN - 189 Business Center Drive, Corona
1/16" = 1'-0"

WWW.MARTINCOMMERCIALGROUP.COM